



Chipsmall Limited consists of a professional team with an average of over 10 year of expertise in the distribution of electronic components. Based in Hongkong, we have already established firm and mutual-benefit business relationships with customers from,Europe,America and south Asia,supplying obsolete and hard-to-find components to meet their specific needs.

With the principle of “Quality Parts,Customers Priority,Honest Operation,and Considerate Service”,our business mainly focus on the distribution of electronic components. Line cards we deal with include Microchip,ALPS,ROHM,Xilinx,Pulse,ON,Everlight and Freescale. Main products comprise IC,Modules,Potentiometer,IC Socket,Relay,Connector.Our parts cover such applications as commercial,industrial, and automotives areas.

We are looking forward to setting up business relationship with you and hope to provide you with the best service and solution. Let us make a better world for our industry!



Contact us

Tel: +86-755-8981 8866 Fax: +86-755-8427 6832

Email & Skype: info@chipsmall.com Web: www.chipsmall.com

Address: A1208, Overseas Decoration Building, #122 Zhenhua RD., Futian, Shenzhen, China

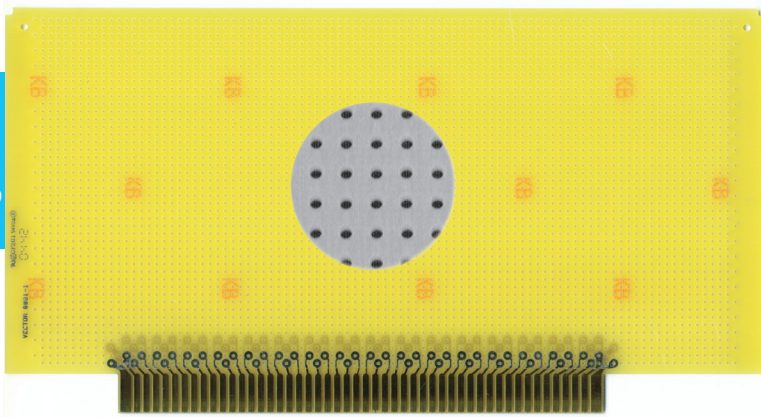




Vectorbord® Plugbord™

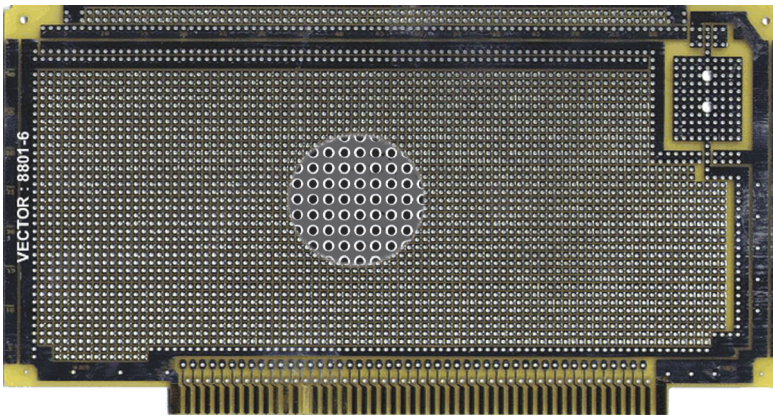
S-100 Bus

Plugbord



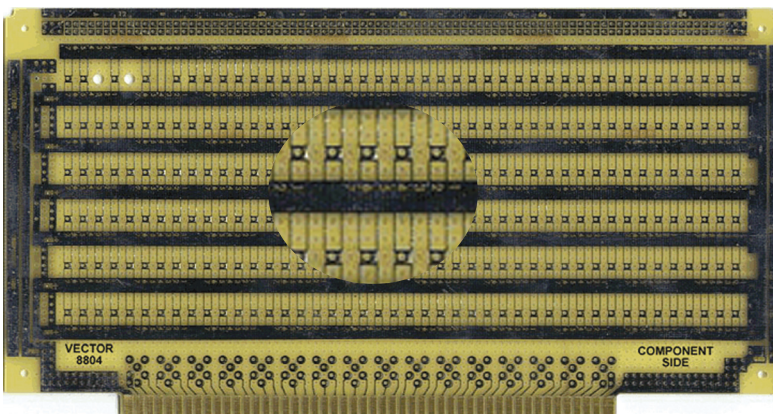
8801-1 **10.50”H x 5.3”L x .062” TH**
 0.100” grid on 0.42” diameter holes. Gold-plated edge contacts only. Bare prototyping board allows unrestricted component placement. 100 gold-plated edge contacts (50 on each side) on 0.125” centers.

16-Pin DIP Capacity:	110
WW Terminals:	T125, T126
Socket Pin:	R32
Solder Connector:	R681-3
WW Connector:	R681-2
Extender:	3690-12
Card Cage:	CCK100
Material:	FR-4



8801-6 **10.50”H x 5.3”L x .062” TH**
 0.100” grid on 0.42” diameter holes. Gold-plated edge contacts with square pad-per-hole pattern on both sides, holes plated-thru. Solder-coated copper pads. Pad area for mounting of ribbon cable I/O connector. 0.085” square pads around each hole both sides. Pin coordinate legend on board surface. Pins 1 & 51 committed to power; pins 50 & 100 committed to ground per S-100 bus specification. 100 gold-plated edge contacts (50 on each side) on 0.125” centers.

16-Pin DIP Capacity:	80
WW Terminals:	T125, T126
Socket Pin:	R32
Solder Connector:	R681-3
WW Connector:	R681-2
Extender:	3690-12
Card Cage:	CCK100
Material:	FR-4



8804 **10.50”H x 5.3”L x .062” TH**
 0.100” grid on 0.42” diameter holes. Gold-plated edge contacts with voltage/ground busses, zig-zag busses and square pads both sides. Solder-coated copper pads not plated-thru. Pad area for mounting of ribbon cable I/O connector. Pin coordinate legend on board surface. Pins 1 & 51 committed to power; pins 50 & 100 committed to ground per S-100 bus specification. 100 gold-plated edge contacts (50 on each side) on 0.125” centers.

16-Pin DIP Capacity:	70
WW Terminals:	T125, T126
Socket Pin:	R32
Solder Connector:	R656-1
WW Connector:	R656-2
Extender:	3690-16
Card Cage:	CCK13
Material:	FR-4

Specification subject to change without notice