



Chipsmall Limited consists of a professional team with an average of over 10 year of expertise in the distribution of electronic components. Based in Hongkong, we have already established firm and mutual-benefit business relationships with customers from,Europe,America and south Asia,supplying obsolete and hard-to-find components to meet their specific needs.

With the principle of “Quality Parts,Customers Priority,Honest Operation,and Considerate Service”,our business mainly focus on the distribution of electronic components. Line cards we deal with include Microchip,ALPS,ROHM,Xilinx,Pulse,ON,Everlight and Freescale. Main products comprise IC,Modules,Potentiometer,IC Socket,Relay,Connector.Our parts cover such applications as commercial,industrial, and automotives areas.

We are looking forward to setting up business relationship with you and hope to provide you with the best service and solution. Let us make a better world for our industry!



Contact us

Tel: +86-755-8981 8866 Fax: +86-755-8427 6832

Email & Skype: info@chipsmall.com Web: www.chipsmall.com

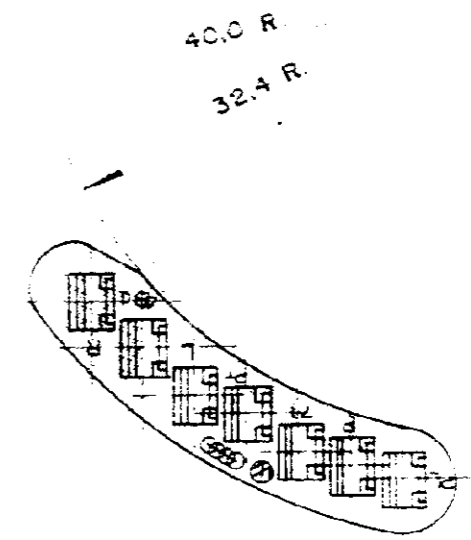
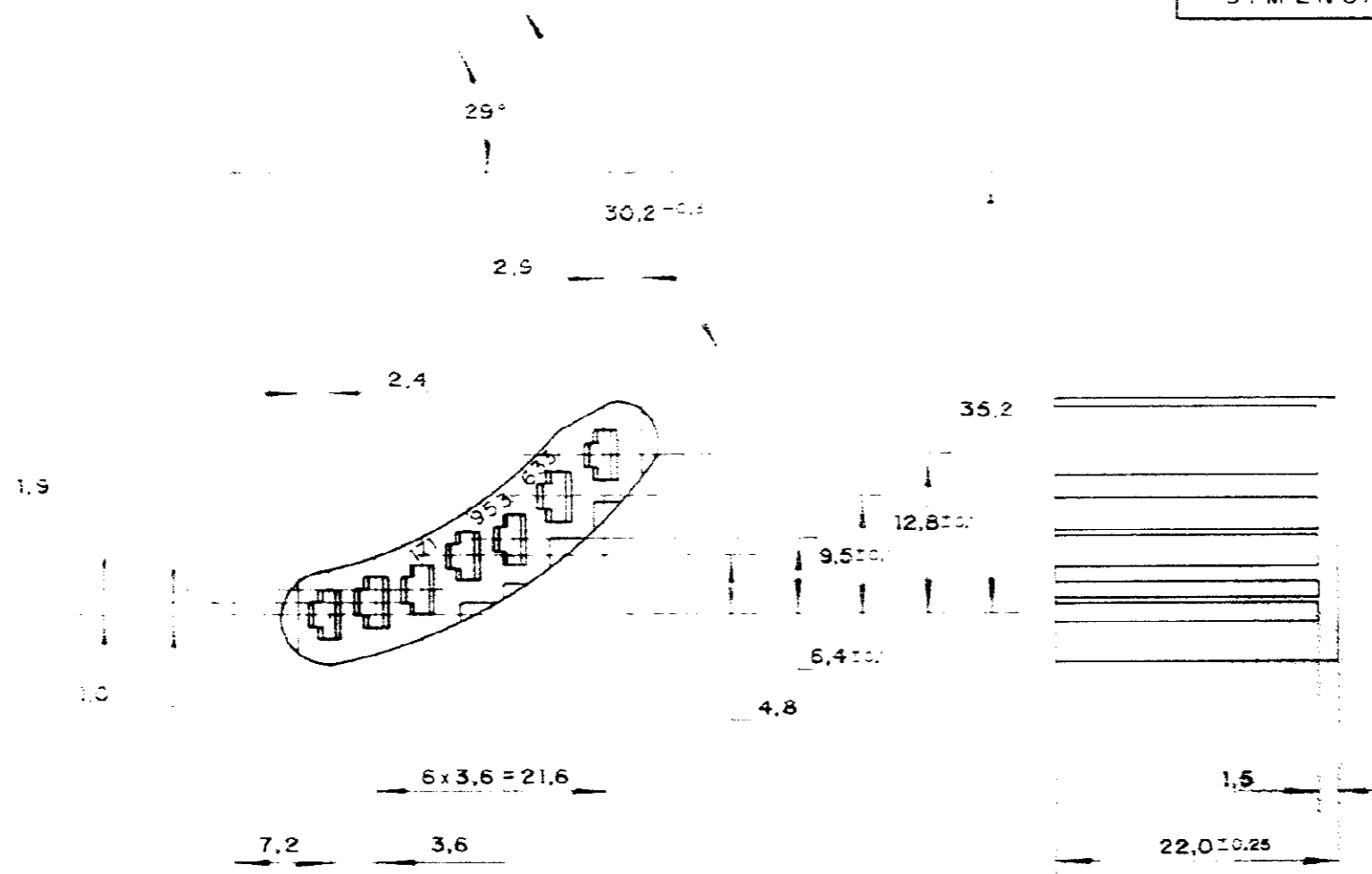
Address: A1208, Overseas Decoration Building, #122 Zhenhua RD., Futian, Shenzhen, China



C 880 106

DO NOT SCALE
DIMENSIONS IN

METRIC



171 953 633	PRETO	POLIAMIDA 6.6	880 106 - 2
	NATURAL	POLIAMIDA 6.6	880 106 - 1
VW PART NUMBER	FINISH	MATERIAL	PART NUMBER
CUSTOMER DWG for REFERENCE ONLY		THIS DRAWING IS UNPUBLISHED RELEASED FOR PUBLICATION	
		© COPYRIGHT 1983 BY AMP DO BRASIL LTDA S.P. ALL INTERNATIONAL RIGHTS RESERVED AMP PRODUCTS MAY BE COVERED BY U.S. AND FOREIGN PATENTS AND/OR PATENTS PENDING.	
		TOLERANCES UNLESS OTHERWISE STATED DEC ± 0.5 ANGLES ± 1°	INS. DIA RANGE WIRE RANGE SCALE
		DR. <i>[Signature]</i> mar. 07/83	AMP AMP do BRASIL LTDA. São Paulo, Brasil
		CHK	DESCRIPTION 7 WAY .110 FAST-IN-ON REC. HSG.
B	REV SADC TABELA	G M T.V.	13.6.84
A	ERA P62-29:91	G M T.V.	7.3.83
ISS	REVISION RECORD	DR	CHK DATE APP
		A3	DWG NO C 880 106
			SHEET 1 OF 1