



Chipsmall Limited consists of a professional team with an average of over 10 year of expertise in the distribution of electronic components. Based in Hongkong, we have already established firm and mutual-benefit business relationships with customers from,Europe,America and south Asia,supplying obsolete and hard-to-find components to meet their specific needs.

With the principle of “Quality Parts,Customers Priority,Honest Operation,and Considerate Service”,our business mainly focus on the distribution of electronic components. Line cards we deal with include Microchip,ALPS,ROHM,Xilinx,Pulse,ON,Everlight and Freescale. Main products comprise IC,Modules,Potentiometer,IC Socket,Relay,Connector.Our parts cover such applications as commercial,industrial, and automotives areas.

We are looking forward to setting up business relationship with you and hope to provide you with the best service and solution. Let us make a better world for our industry!



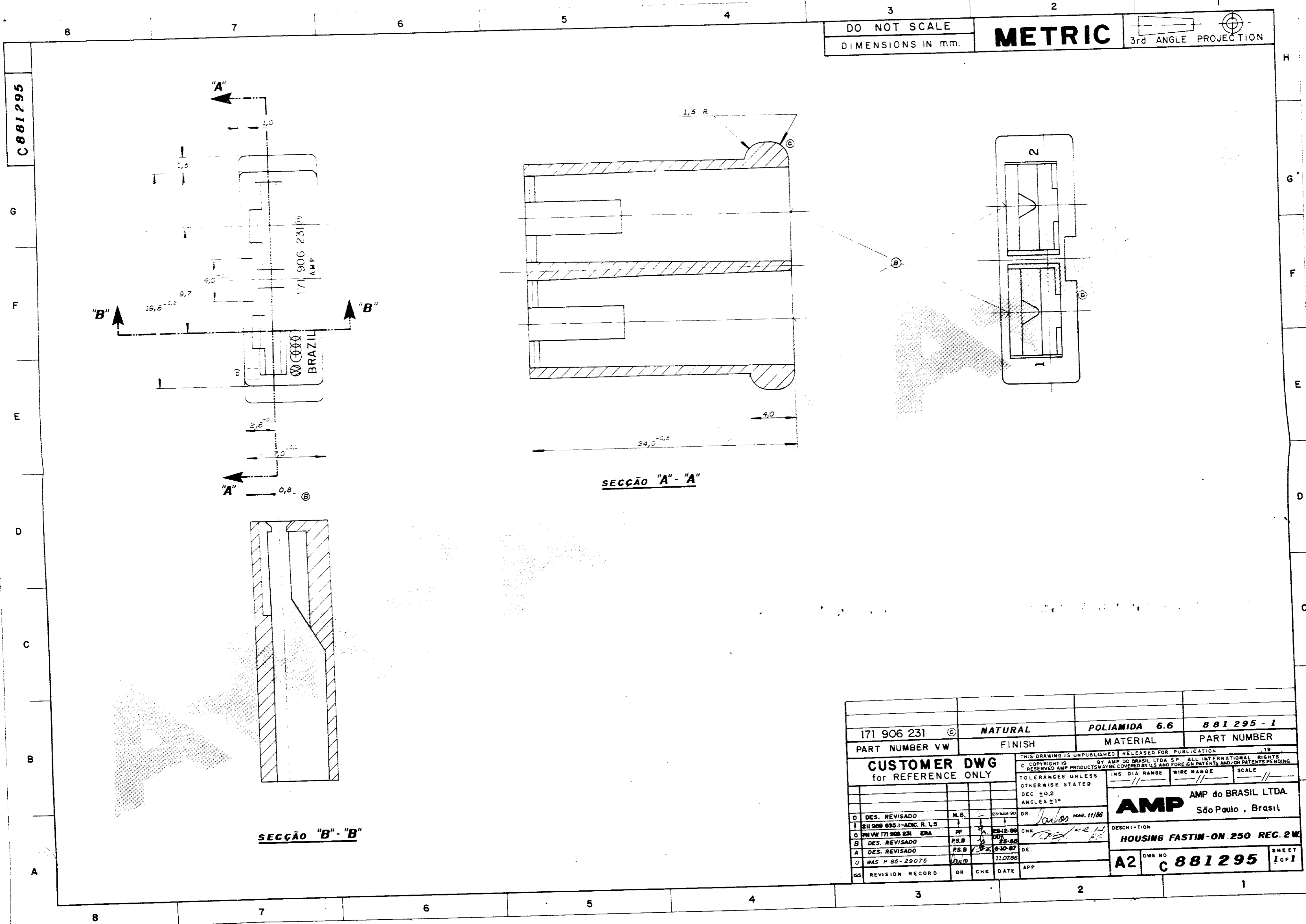
Contact us

Tel: +86-755-8981 8866 Fax: +86-755-8427 6832

Email & Skype: info@chipsmall.com Web: www.chipsmall.com

Address: A1208, Overseas Decoration Building, #122 Zhenhua RD., Futian, Shenzhen, China





DO NOT SCALE
DIMENSIONS IN mm.

METRIC

3rd ANGLE PROJECTION

C881295

SECÇÃO "A" - "A"

SECÇÃO "B" - "B"

171 906 231 ©		NATURAL	POLIAMIDA 6.6	881295-1
PART NUMBER VW		FINISH	MATERIAL	PART NUMBER
CUSTOMER DWG for REFERENCE ONLY		THIS DRAWING IS UNPUBLISHED. RELEASED FOR PUBLICATION.		
		C. COPYRIGHT © BY AMP DO BRASIL LTDA S.P. ALL INTERNATIONAL RIGHTS RESERVED. AMP PRODUCTS MAY BE COVERED BY U.S. AND FOREIGN PATENTS AND/OR PATENTS PENDING.		
		TOLERANCES UNLESS OTHERWISE STATED	INS. DIA RANGE	WIRE RANGE
		DEC. 20,2	//	//
		ANGLES ±1°		
		AMP AMP do BRASIL LTDA. São Paulo, Brasil		
		DESCRIPTION		
		HOUSING FASTIM-ON 250 REC. 2W		
		DWG NO	C 881295	SHEET 1 of 1
ISS REVISION RECORD		DR	CHK	DATE
D	DES. REVISADO	M.B.	23-MAR-90	DR
I	211 906 635.1-ADIC. R. 1,5			
C	PM VW 171 906 231 ERA	PF	23-12-88	CHK
B	DES. REVISADO	PS.B	25-88	
A	DES. REVISADO	PS.B	6-10-87	DE
O	WAS P 85-29075	WLD	11.07.86	APP.