



Chipsmall Limited consists of a professional team with an average of over 10 year of expertise in the distribution of electronic components. Based in Hongkong, we have already established firm and mutual-benefit business relationships with customers from,Europe,America and south Asia,supplying obsolete and hard-to-find components to meet their specific needs.

With the principle of “Quality Parts,Customers Priority,Honest Operation,and Considerate Service”,our business mainly focus on the distribution of electronic components. Line cards we deal with include Microchip,ALPS,ROHM,Xilinx,Pulse,ON,Everlight and Freescale. Main products comprise IC,Modules,Potentiometer,IC Socket,Relay,Connector.Our parts cover such applications as commercial,industrial, and automotives areas.

We are looking forward to setting up business relationship with you and hope to provide you with the best service and solution. Let us make a better world for our industry!



## Contact us

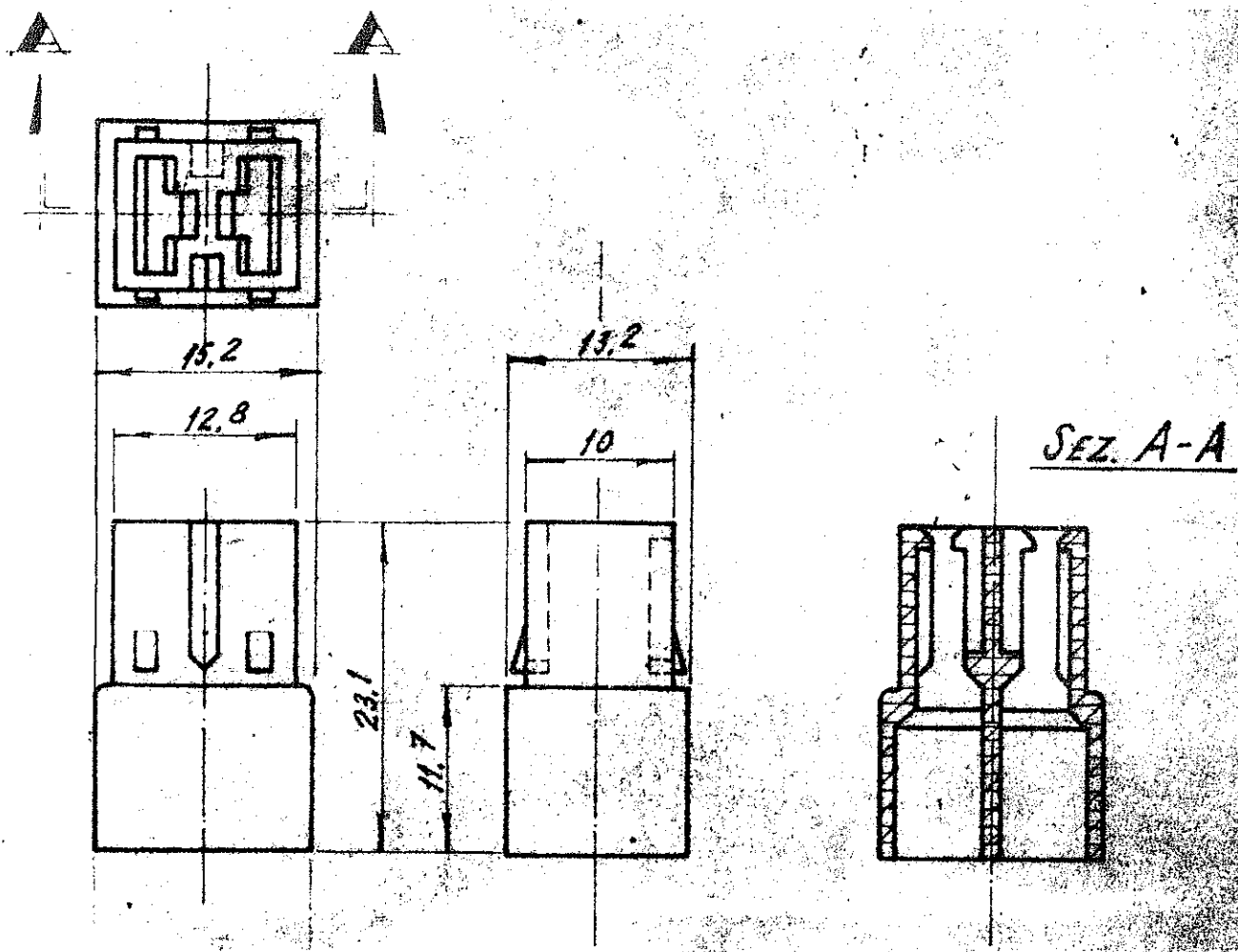
Tel: +86-755-8981 8866 Fax: +86-755-8427 6832

Email & Skype: info@chipsmall.com Web: www.chipsmall.com

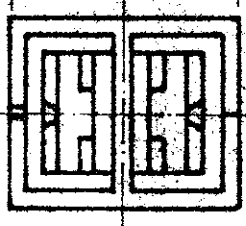
Address: A1208, Overseas Decoration Building, #122 Zhenhua RD., Futian, Shenzhen, China



NUMBER  
C-881600



- 1 ESTABILIZADO AO CALOR  
HEAT STABILIZED
- 2 OBSOLETE PARTS: OBSOLETE CIS STREAMLINING  
PER D.RENAUD/D.SINISI



2	A	BLACK	PA 6.6	1	- 4
	2	OBSOLETE	BLACK	1	- 3
			RED		- 2
			NATURAL	PA 6.6	881600-1
			COLOR	MATERIAL	PART NUMBER

DIMENSIONS IN INCHES DO NOT SCALE PRINT

				© 1974 BY AMP INCORPORATED ALL RIGHTS RESERVED AMP PRODUCTS COVERED BY PATENTS AND OR PATENTS PENDING.		CUSTOMER COPY REFERENCE ONLY	
				MATERIAL AND FINISH		AMP do BRASIL LTDA São Paulo, Brasil	
SEE TABLE				CLASS		TYPE	
A1 REVISED PER ECO-10-000445		KK AEG 12JAN10		WIRE RANGE		INSULATION	
A REVISED LE.D.0449/04		H.C. H.C. 27DEC04		TYPE			
O ERA P90-29433		MO JRG 07-1-91		TOLERANCE EXCEPT AS NOTED		SCALE	
REVISION RECORD		DR GHK DATE		± 0.4		2:1	
DR ML 08-JAN-91		DE 09-JAN-91		LOC		NO	
APP JR 09-JAN-91		APP Eyer 09-JAN-91		A		C-881600	
				NAME		REV	
				2WAY FASTIN-FASTON REC HOUSINGS - (.250 ORS)		A1	