



Chipsmall Limited consists of a professional team with an average of over 10 year of expertise in the distribution of electronic components. Based in Hongkong, we have already established firm and mutual-benefit business relationships with customers from,Europe,America and south Asia,supplying obsolete and hard-to-find components to meet their specific needs.

With the principle of “Quality Parts,Customers Priority,Honest Operation,and Considerate Service”,our business mainly focus on the distribution of electronic components. Line cards we deal with include Microchip,ALPS,ROHM,Xilinx,Pulse,ON,Everlight and Freescale. Main products comprise IC,Modules,Potentiometer,IC Socket,Relay,Connector.Our parts cover such applications as commercial,industrial, and automotives areas.

We are looking forward to setting up business relationship with you and hope to provide you with the best service and solution. Let us make a better world for our industry!



Contact us

Tel: +86-755-8981 8866 Fax: +86-755-8427 6832

Email & Skype: info@chipsmall.com Web: www.chipsmall.com

Address: A1208, Overseas Decoration Building, #122 Zhenhua RD., Futian, Shenzhen, China



THIS DRAWING IS UNPUBLISHED.

RELEASED FOR PUBLICATION

ALL RIGHTS RESERVED.

© COPYRIGHT - By -

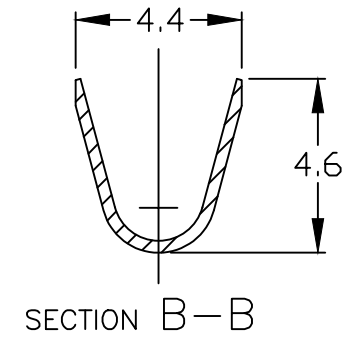
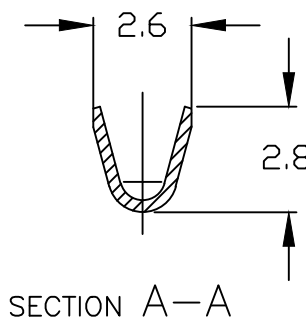
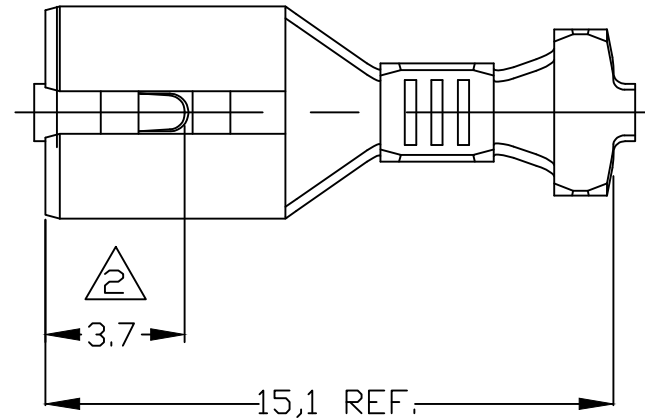
CAD AutoCAD DO NOT REVISE EXCEPT BY CAD

LOC AP

DIST -

REVISIONS

| P | LTR | DESCRIPTION | DATE | DWN | APVD |
|---|-----|------------------------------|-----------|-----|------|
| | H | REVISED DESIGN ECO-14-000165 | 24JAN2014 | NCL | WLS |



① - PEÇA SOLTA - VER DESENHO 444201.

① - LOOSE PIECE - SEE DRAWING 444201.

② - LOCALIZAÇÃO DO DIMPLE - 3,0mm. PARA O PN. 1-881623-0.

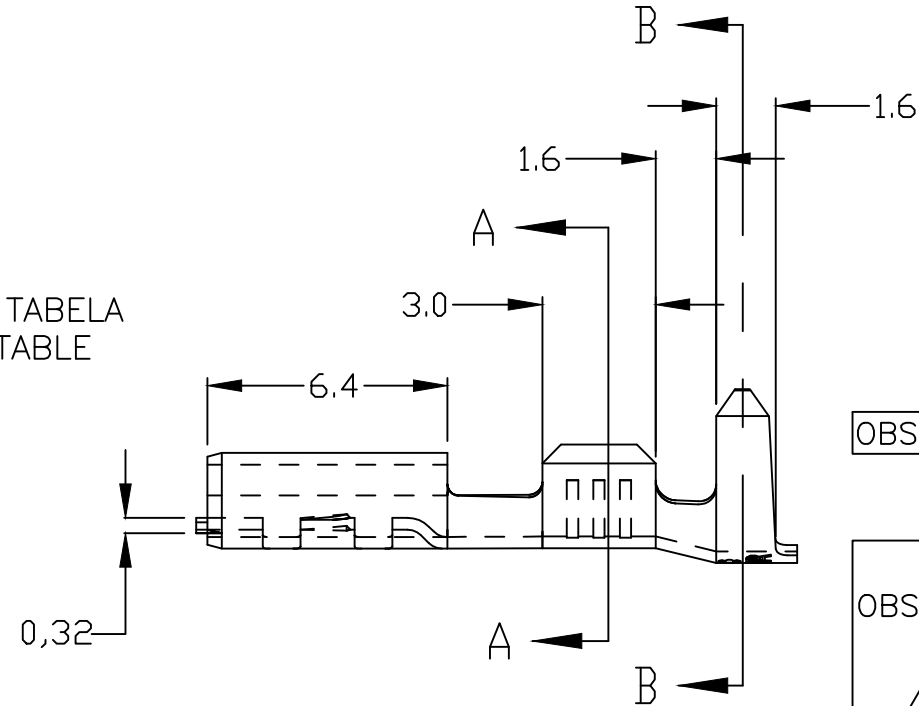
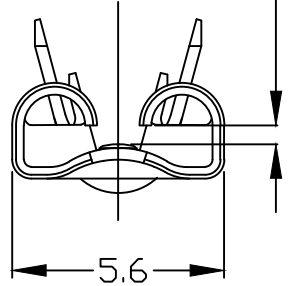
② - DIMPLE LOCATION 3,0mm. FOR PN. 1-881623-0.

③ - OBSOLETE PARTS: OBSOLETE CIS STREAMLINING PER D.RENAUD/D.SINISI

④ - HEAT TREATMENT

| INSERTION AND EXTRACTION REQUIREMENTS | 1 ST ON (N) MAX. | 1 ST OFF (N) MIN. | 6 TH ON (N) MIN. |
|---------------------------------------|------------------|-------------------|------------------|
| | 46 | 28 | 15 |

OLHAR TABELA SEE TABLE



| | 0,5 mm | 0,8 mm | 0,5 mm | 0,5 mm | OBSOLETE | OBSOLETE | 0,8 mm | 0,8 mm | 0,8 mm | 0,8 mm | 0,8 mm | 0,8 mm | 0,8 mm | PARA LINGUETA | FINISH | MATERIAL | PART NUMBER |
|----------|--------|--------|-------------------------|--------|----------|----------|--------|--------|--------|--------|--------|--------|--------|---------------|--------|-------------|--------------|
| | --- | --- | --- | --- | | | --- | --- | --- | --- | --- | --- | --- | | | LATÃO/BRASS | ④ 1-881623-1 |
| OBSOLETE | | | | | | | | | | | | | | | | LATÃO/BRASS | ② 1-881623-0 |
| | | | ESTANHADO/TIN PLATED | | | | | | | | | | | | | LATÃO/BRASS | ① 881623-9 |
| | | | --- | | | | | | | | | | | | | LATÃO/BRASS | ① 881623-8 |
| OBSOLETE | | | ESTANHADO/TIN PLATED | | | | | | | | | | | | | LATÃO/BRASS | 881623-7 |
| OBSOLETE | | | --- | | | | | | | | | | | | | LATÃO/BRASS | 881623-6 |
| | | | NIQUELADO/NICKEL PLATED | | | | | | | | | | | | | AÇO/STEEL | 881623-5 |
| | | | --- | | | | | | | | | | | | | AÇO/STEEL | 881623-4 |
| | | | ESTANHADO/TIN PLATED | | | | | | | | | | | | | BRONZE/FOSF | 881623-3 |
| | | | ESTANHADO/TIN PLATED | | | | | | | | | | | | | LATÃO/BRASS | ① 881623-2 |
| | | | --- | | | | | | | | | | | | | LATÃO/BRASS | ① 881623-1 |

THIS DRAWING IS A CONTROLLED DOCUMENT.

DWN MRBRIZ 10SEP2003
CHK PLARIA 10SEP2003
APVD DOLIVEIRA
PRODUCT SPEC
APPLICATION SPEC
WEIGHT -

STE TE Connectivity

NAME
-
.187 SERIES FASTON REC.
-

SIZE A3 CAGE CODE 00779 DRAWING NO C=881623 RESTRICTED TO -

CUSTOMER DRAWING SCALE 5:1 SHEET 1 OF 1 REV H

| | |
|-----------------------------|---|
| INS. RANGE Ø2,0 - 3,3 mm | WIRE RANGE 0,5 - 1,0 mm ² |
|-----------------------------|---|

MATERIAL VER TABELA

FINISH VER TABELA