



Chipsmall Limited consists of a professional team with an average of over 10 year of expertise in the distribution of electronic components. Based in Hongkong, we have already established firm and mutual-benefit business relationships with customers from,Europe,America and south Asia,supplying obsolete and hard-to-find components to meet their specific needs.

With the principle of “Quality Parts,Customers Priority,Honest Operation,and Considerate Service”,our business mainly focus on the distribution of electronic components. Line cards we deal with include Microchip,ALPS,ROHM,Xilinx,Pulse,ON,Everlight and Freescale. Main products comprise IC,Modules,Potentiometer,IC Socket,Relay,Connector.Our parts cover such applications as commercial,industrial, and automotives areas.

We are looking forward to setting up business relationship with you and hope to provide you with the best service and solution. Let us make a better world for our industry!



## Contact us

Tel: +86-755-8981 8866 Fax: +86-755-8427 6832

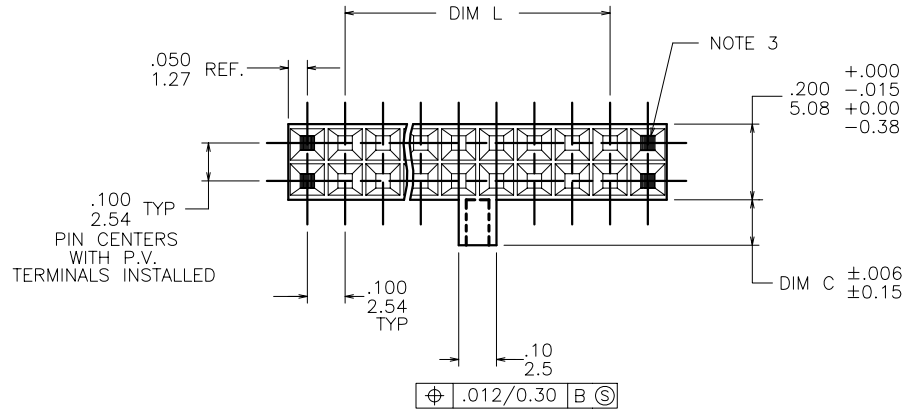
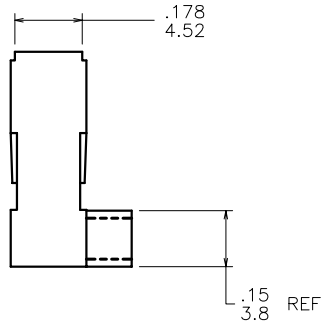
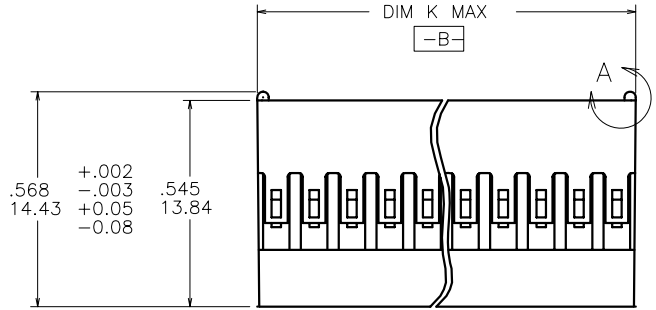
Email & Skype: [info@chipsmall.com](mailto:info@chipsmall.com) Web: [www.chipsmall.com](http://www.chipsmall.com)

Address: A1208, Overseas Decoration Building, #122 Zhenhua RD., Futian, Shenzhen, China



PRODUCT NO.

SEE TABLE

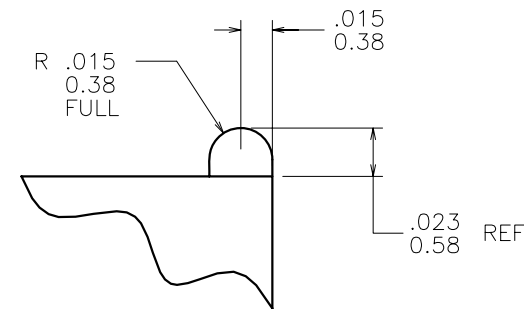


NOTES

1. MOLDING MATERIAL: MODIFIED POLYPHENYLENE ETHER, FLAME RETARDANT PER UL-94V-0, COLOR: BLACK.
2. PIN LENGTH TO BE .210/5.33 MIN. RECOMMENDED PIN LENGTH IS .225±.015/5.72±0.38.
3. TWO END CAVITIES ON EACH END OF HOUSING ARE MOLDED CLOSED.
4. FOR TERMINAL APPLICATION SEE TA-531. PRODUCT SPECIFICATION: BUS-12-067.
5. PRODUCT MEETS EUROPEAN UNION DIRECTIVES AND OTHER COUNTRY REGULATIONS AS DESCRIBED IN GS-22-008.
6. THIS PRODUCT IS NOT INTENDED TO BE EXPOSED TO MANUFACTURING SOLDER PROCESSES.

mat'l. code SEE NOTE 1				surface ✓	tolerance	projection ⌀	product family PV HOUSINGS
ltr	ec'n no	dr	date	tolerances unless otherwise specified		INCH/MM scale 2.5:1	title MINI LATCH HOUSING DR POLARIZED WITH LATCH FEATURE
H	v07-0534	HTB	2007-08-22	angles	linear		
-	-	-	-				
C	v50128	GAH	1995-04-18	0°±2°	linear		
D	v90979	RGD	1999-06-21	dr	D. SHEAFFER	1990-02-23	dwg no 88237 sheet 1 of 2 size A3
E	v03-1363	PJ	2004-02-21	engr	C. TREXLER	1990-02-23	
F	v05-0718	TAB	2005-07-29	chr	C. TREXLER	1991-10-14	
G	v06-0447	HTB	2006-05-17	appd	C. TREXLER	1991-10-14	
sheet	revision	H	H				type Product Customer Drawing
index	sheet	1	2				

PRODUCT NUMBER	NO.OF USABLE POS.	DIM K	DIM L	DIM C
88237-010LF	2 X 5	.680/17.28	.400/10.16	.067/1.70
88237-014LF	2 X 7	.880/22.35	.600/15.24	.067/1.70
88237-016LF	2 X 8	.980/24.89	.700/17.78	.067/1.70
88237-020LF	2 X 10	1.180/29.97	.900/22.86	.067/1.70
88237-024LF	2 X 12	1.380/35.05	1.100/27.94	.067/1.70
88237-026LF	2 X 13	1.480/37.59	1.200/30.48	.067/1.70
88237-030LF	2 X 15	1.680/42.67	1.400/35.56	.067/1.70
88237-034LF	2 X 17	1.880/47.75	1.600/40.64	.067/1.70
88237-040LF	2 X 20	2.180/55.38	1.900/48.26	.067/1.70
88237-044LF	2 X 22	2.380/60.45	2.100/53.34	.067/1.70
88237-050LF	2 X 25	2.680/68.08	2.400/60.96	.067/1.70
88237-060LF	2 X 30	3.180/80.77	2.900/73.66	.067/1.70



DETAIL A  
SCALE: 5/1

mat'l. code SEE NOTE 1				surface <input checked="" type="checkbox"/>		tolerance		projection		product family PV HOUSINGS	
ltr	ecm no	dr	date	tolerances unless otherwise specified						title	
H				angles	linear	.XX+01/XX+3		INCH/MM		MINI LATCH HOUSING DR	
						.XXX+.005/XX+13				POLARIZED WITH LATCH FEATURE	
				0°±2°		XXXX+.0020/XXX+.051		scale 2.5:1		dwg no	
				dr	D. SHEAFFER	1990-02-23				sheet 2 of 2	
				engr	C. TREXLER	1990-02-23				size	
				chr	C. TREXLER	1991-10-14				A3	
				appd	C. TREXLER	1991-10-14				type	
sheet index		revision sheet								Product Customer Drawing	