



Chipsmall Limited consists of a professional team with an average of over 10 year of expertise in the distribution of electronic components. Based in Hongkong, we have already established firm and mutual-benefit business relationships with customers from,Europe,America and south Asia,supplying obsolete and hard-to-find components to meet their specific needs.

With the principle of “Quality Parts,Customers Priority,Honest Operation,and Considerate Service”,our business mainly focus on the distribution of electronic components. Line cards we deal with include Microchip,ALPS,ROHM,Xilinx,Pulse,ON,Everlight and Freescale. Main products comprise IC,Modules,Potentiometer,IC Socket,Relay,Connector.Our parts cover such applications as commercial,industrial, and automotives areas.

We are looking forward to setting up business relationship with you and hope to provide you with the best service and solution. Let us make a better world for our industry!



Contact us

Tel: +86-755-8981 8866 Fax: +86-755-8427 6832

Email & Skype: info@chipsmall.com Web: www.chipsmall.com

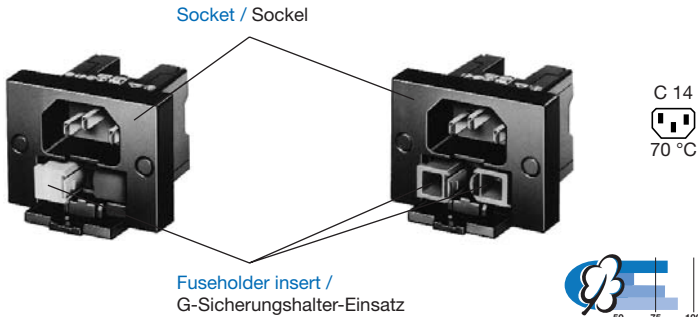
Address: A1208, Overseas Decoration Building, #122 Zhenhua RD., Futian, Shenzhen, China



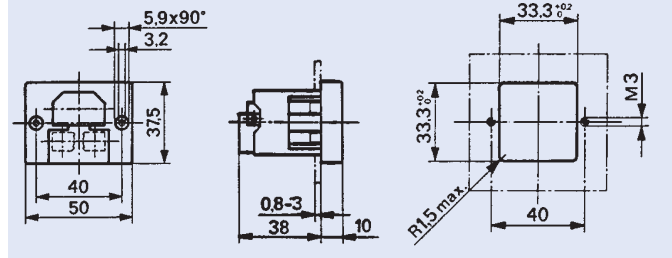
POWER ENTRY MODULES / GERÄTESTECKER-KOMBIELEMENTE

Power entry modules Type 8843 with fuseholder

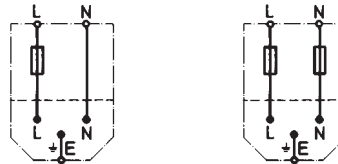
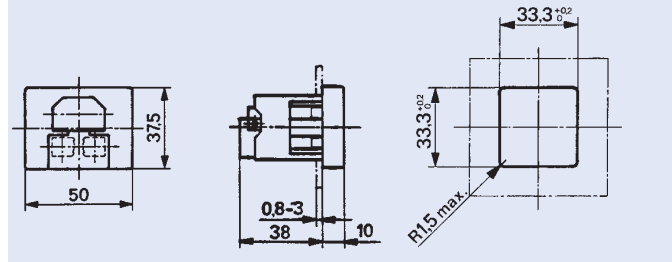
Gerätestecker-Kombielemente Typ 8843 mit G-Sicherungshalter



Screw-on mounting / Schraub-Montage



Snap-in mounting / Snap-in-Montage



single pole / 1polig

double pole / 2polig

Approvals / Approbationen

SEV (10 A/250 V AC)	NEMKO (10 A/250 V AC)
VDE (10 A/250 V AC)	DEMKO (10 A/250 V AC)
SEMKO (10 A/250 V AC)	FIMKO (10 A/250 V AC)
UL (10 A/250 V AC)	IMQ (10 A/250 V AC)
CSA (10 A/250 V AC)	KEMA (10 A/250 V AC)
ÖVE (10 A/250 V AC)	

Standards, Patents / Normen, Patente

EN 60320-1, IEC 60320-1/C14, DIN VDE 0625, SEMKO 9320, CSA C22.2/182.3, UL 498, U.S. Patent No. 4.568.137

Technical data

- Appliance inlet protection class I, pin temperature 70 °C
- Shock-safe fuseholder 1- or 2-pole for fuse-links 5 x 20 mm or 6,3 x 32 mm (1/4" x 1 1/4")
- Screw-on mounting from front or rear or snap-in mounting for panel thickness 0,8–3 mm
- Solder terminals 3,0 x 0,8 mm or quick connect terminals 4,8 x 0,8 mm (brass tin-plated)
- Ambient temperature T_a –25 to +70 °C
- Contact resistance: 5 mΩ
- Admissible power acceptance P_h in function of T_a
- Socket of thermoplastic UL 94V-0

Technische Daten

- Gerätestecker Schutzklasse I, Stifttemperatur 70 °C
- Berührungssicherer 1- oder 2poliger G-Sicherungshalter für G-Sicherungseinsätze 5 x 20 mm oder 6,3 x 32 mm (1/4" x 1 1/4")
- Schraubbefestigung für Durchsteck- oder Snap-in-Steckmontage für Montageplattendicken 0,8–3 mm
- Lötanschlüsse 3,0 x 0,8 mm oder Steckanschlüsse 4,8 x 0,8 mm (Messing verzinkt)
- Umgebungstemperatur T_u –25 bis +70 °C
- Durchgangswiderstand: 5 mΩ
- Zulässige Leistungsaufnahme P_h in Funktion von T_u
- Socket aus Thermoplast UL 94V-0

Order No. Socket (fuse-drawer inserts must be ordered separately) / Bestell-Nr. Sockel (G-Sicherungshalter-Einsätze separat bestellen)

Fuseholder / G-Sicherungshalter	Solder terminals / Lötanschlüsse	Quick connect terminals / Steckanschlüsse	Screw-on mounting / Schraubmontage	Snap-in mounting / Snap-in-Montage
1-pole / 1polig	3,0 x 0,8 mm	4,8 x 0,8 mm		
2-pole / 2pole				
8843.0351 (8843-351.60)	•		•	
8843.0353 (8843-353.60)		•	•	
8843.0451 (8843-451.60)	•			•
8843.0453 (8843-453.60)		•		•
8843.0361 (8843-361.60)				
8843.0363 (8843-363.60)				
8843.0461 (8843-461.60)				
8843.0463 (8843-463.60)				

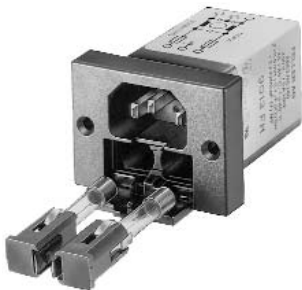
Order No. Fuseholder insert / Bestell-Nr. G-Sicherungshalter-Einsatz

Type / Typ	Two fuseholder inserts must be ordered for 2-pole fuseholder / Für Sockel mit 2poligem G-Sicherungshalter müssen zwei G-Sicherungshalter-Einsätze bestellt werden
5 x 20 mm	
6,3 x 32 mm	
8843.0902 (8843-902.60)	
8843.0901 (8843-901.60)	

POWER ENTRY MODULES / GERÄTESTECKER-KOMBIELEMENTE

Power entry modules Type 8843

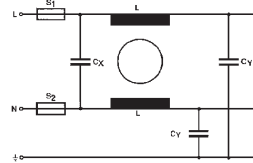
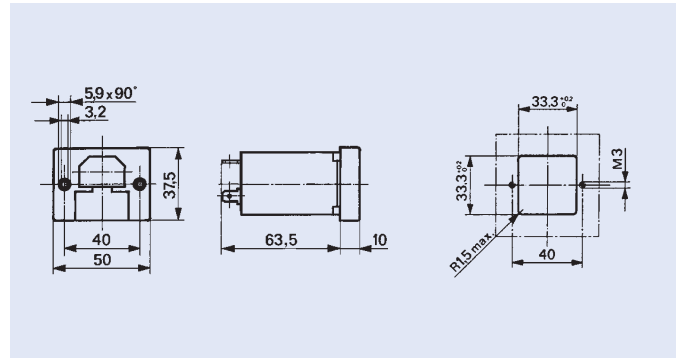
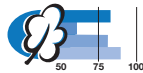
with mains filter for standard and medical application with fuseholder



Gerätestecker-Kombielemente Typ 8843

mit Netzfilter für Standard- und Medizinal-Anwendungen mit G-Sicherungshalter

C 14
70 °C



Technical data

- Appliance inlet protection class I, pin temperature 70 °C
- Shock-safe 2-pole fuseholder for fuse-links 5 x 20 mm and 6,3 x 32 mm (1/4" x 1 1/4")
- With an integral mains filter for 1, 3, 6 or 10 A / 250 V AC
- Quick connect terminals 6,3 x 0,8 mm
- Nichrom steel shield
- Mounting with screws M3
- Ambient temperature T_a -25 to +70 °C
- Admissible power acceptance P_h in function of T_a
- Socket of thermoplastic UL 94V-0

Technische Daten

- Gerätestecker Schutzklasse I, Stifftemperatur 70 °C
- Berührungssicherer G-Sicherungshalter 2polig für G-Sicherungseinsätze 5 x 20 mm und 6,3 x 32 mm (1/4" x 1 1/4")
- Angebauter Netzfilter für 1, 3, 6 oder 10 A / 250 V AC
- Steckanschlüsse 6,3 x 0,8 mm
- Filtergehäuse aus Chromnickelstahl
- Montage mit Schrauben M3
- Umgebungstemperatur T_u -25 bis +70 °C
- Zulässige Leistungsaufnahme P_h in Funktion von T_u
- Sockel aus Thermoplast UL 94V-0

Approvals / Approbationen

- SEV (1-6 A/250 V AC)
only standard version / nur Standard-Ausführung
- VDE (1-10 A/250 V AC)
standard and medical version /
Standard- und medizinische Ausführung
- SEMKO (1 A/250 V AC)
only standard version / nur Standard-Ausführung
- UL (1-10 A/250 V AC)
standard and medical version /
Standard- und medizinische Ausführung
- CSA (1-10 A/250 V AC)
standard and medical version /
Standard- und medizinische Ausführung

Values of fuse-links (time-lag): $I_{t1} \leq I_n$ /
Wert der Sicherungseinsätze (träge): $I_{t1} \leq I_n$

Order No. Socket (for standard filter) fuse-drawer must be ordered separately /

Bestell-Nr. Sockel (für Standard Filter) Schublade separat bestellen

	I_n (A) T_a 45°C* / T_u 45°C*	U_n (V)	Max. leakage curr. Max. Ableitstrom (mA) 250V/50Hz	C_{x2} (nF)	C_y (nF)	L (2x) (mH)	Test voltage Testspannung L,N → E	L → N
8843.8123.1 (8843.N1.140.60)	1	up to/ bis	< 0,5	47	2,2	11	2700 V DC 2 sec. / 2 Sek.	1075 V DC 2 sec. / 2 Sek.
8843.8323.1 (8843.N3.140.60)	3	250 V	< 0,5	47	2,2	1,6		
8843.8623.1 (8843.N6.140.60)	6	max.	< 0,5	47	2,2	0,8		
8843.8923.1 (8843.N10.140.60)	10	50/60 Hz	< 0,5	47	2,2	0,4		

* VDE T_a 40 °C / VDE T_u 40 °C

Order No. Fuseholder insert

Bestell-Nr. G-Sicherungshalter-Einsatz

for fuse-links / für Sicherungseinsätze 5 x 20 mm	6,3 x 32 mm (1/4" x 1 1/4")
8843.0902 (8843-902.60)	8843.0901 (8843-901.60)

Two fuseholder inserts must be ordered for each filter /
Pro Filter müssen zwei G-Sicherungshalter-Einsätze bestellt werden