



Chipsmall Limited consists of a professional team with an average of over 10 year of expertise in the distribution of electronic components. Based in Hongkong, we have already established firm and mutual-benefit business relationships with customers from,Europe,America and south Asia,supplying obsolete and hard-to-find components to meet their specific needs.

With the principle of "Quality Parts,Customers Priority,Honest Operation,and Considerate Service",our business mainly focus on the distribution of electronic components. Line cards we deal with include Microchip,ALPS,ROHM,Xilinx,Pulse,ON,Everlight and Freescale. Main products comprise IC,Modules,Potentiometer,IC Socket,Relay,Connector.Our parts cover such applications as commercial,industrial, and automotives areas.

We are looking forward to setting up business relationship with you and hope to provide you with the best service and solution. Let us make a better world for our industry!



Contact us

Tel: +86-755-8981 8866 Fax: +86-755-8427 6832

Email & Skype: info@chipsmall.com Web: www.chipsmall.com

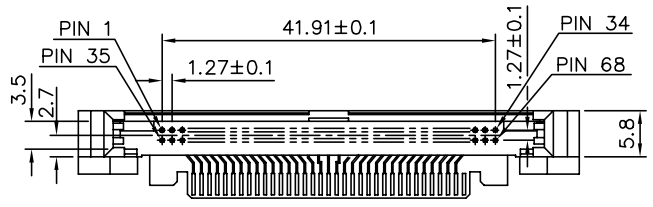
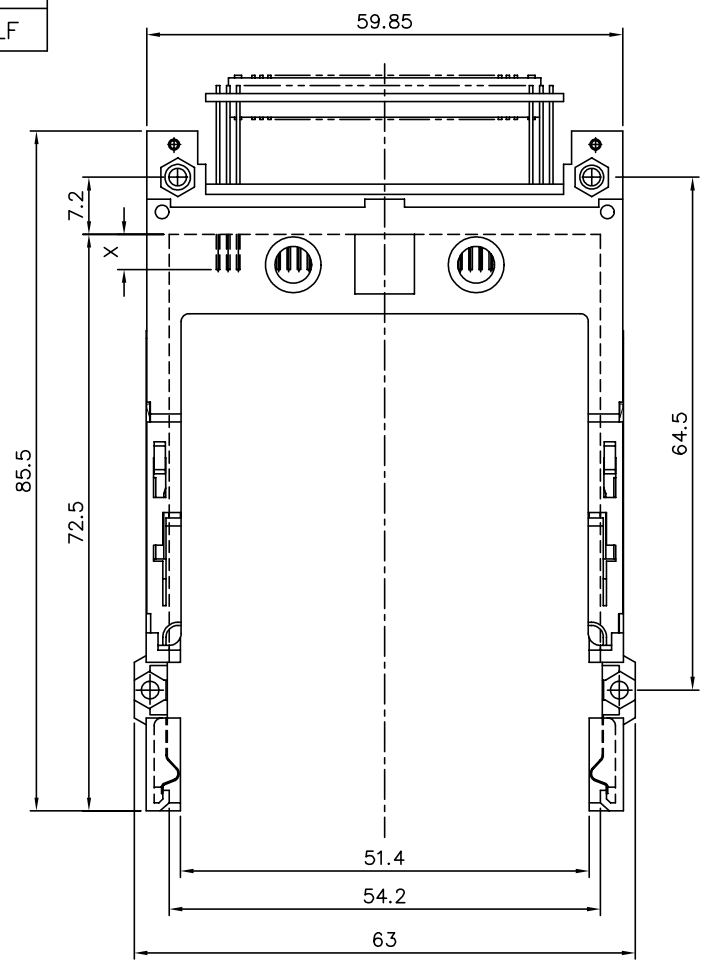
Address: A1208, Overseas Decoration Building, #122 Zhenhua RD., Futian, Shenzhen, China



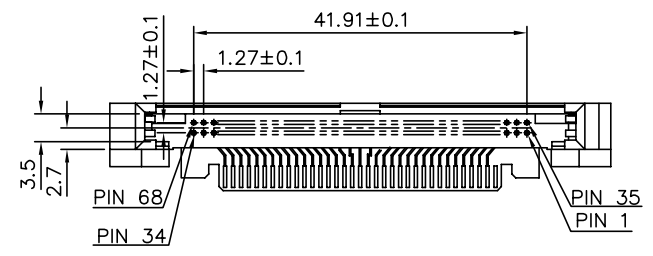
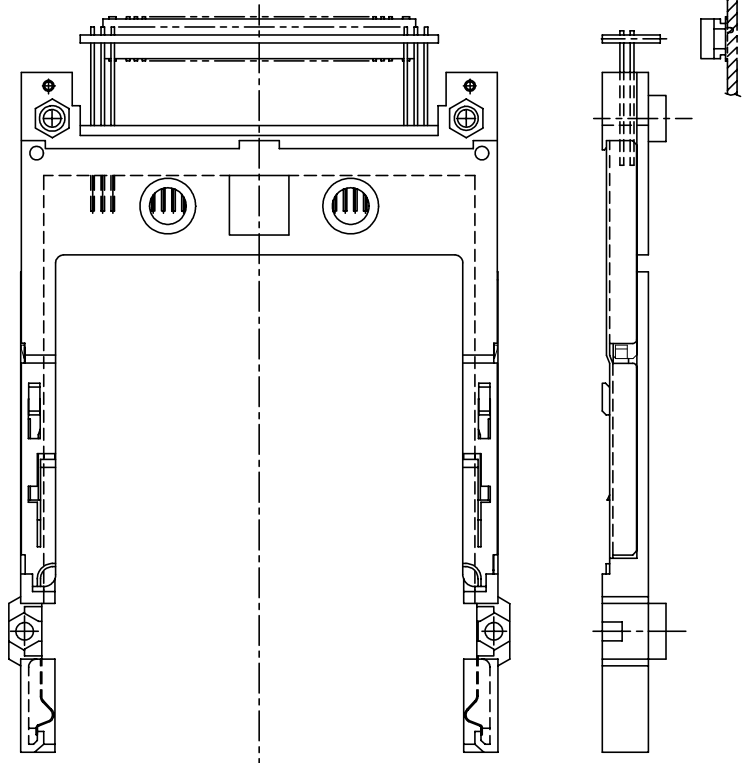
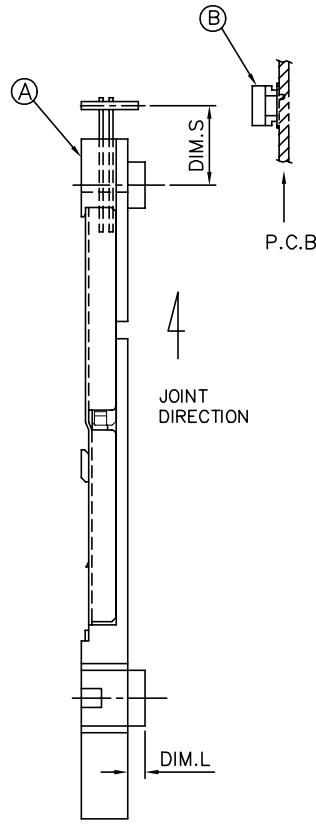
FCI CONFIDENTIAL

FCI
FCIconnect.com

PRODUCT NO.	
88640-***	
88640-***LF	



ABOVE P.C.B(P.C.B LAYOUT SEE PAGE 3,4)



BELOW P.C.B(P.C.B LAYOUT SEE PAGE 5,6)

mat'l. code		surface		tolerance		projection		product family	
		ISO 1302		ISO 406		ISO 1181		EJECTOR HEADER ASS'Y	
tr ecn no dr date		tolerances unless otherwise specified		linear		MM		68POS. SMT TYP 1/2/3	
E	T90210	W L	05/24/99	angles	±0.30	scale 1:1		dwg no 88640 sheet 1 of 6 size A4	
F	T04-0205	W L	05/13/04	linear	±2'	FCI		type CUSTOMER Drawing	
G	N05-0156	W B	06/15/05	chr	JENN TSAO	12/19/95			
H	N08-0099	MZ	12/11/07	app	JOSEPH HSIA	12/19/95			
J	ELX-N-011428	ZK	04/10/12		JOSEPH HSIA	12/19/95			
sheet index		revision	J J J J J J J						
		sheet	1 2 3 4 5 6						

FCI CONFIDENTIAL

FCI

This document is the property of and embodies CONFIDENTIAL and PROPRIETARY information of FCI. No part of this information shown on this document may be used in any way or disclosed to others without the written consent of FCI. Copyright FCI.

A

B

C

D

NOTES:

- 1. P.C.B SIDE ARE AS APPEARS INSTALLED.
- 2. MATERIAL
- 2.1 HEADER ASS'Y :
 PLASTIC :HOUSING ...HIGH TEMPERATURE THERMOPLASTIC UL94V-0 BLACK(ABOVE P.C.B)
 ...HIGH TEMPERATURE THERMOPLASTIC UL94V-0 BLACK(BELOW P.C.B)
 PIN :COPPER ALLOY
 PCB : FR4
- 2.2 EJECT MECHANISM ASS'Y :
 PLASTIC :GUIDE:HIGH TEMPERATURE THERMOPLASTIC UL94V-0 BLACK
 PLATE :STAINLESS
 EMI CONTACT:PHOSPHOR BRONZE
- 3. FINISH (PIN)
 UNDER PLATING :0.5 um MIN. Ni
 1.27um Ni (ONLY FOR 88640-051LF)
 CONTACT AREA :0.076 um MIN. GOLD
 SOLDER TAIL : 2.5 um MIN. Sn-Pb
 : 2.5 um MIN. PURE Sn (FOR -****LF)
- 4. DIM "X"

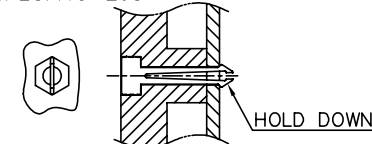
4.25±0.1	3.5±0.1	5.0±0.1
OTHERS	36,67	1,17,34,35,51,68
- 5. DO NOT TOUCH AND KEEP CLEAN THE SURFACES OF P.C.B OF HEADER.
- 6. ADD "H" TO PART NUMBER FOR OPTIONAL HOLD DOWN (4 PER ASSEMBLY IN EJECT MECHANISM AND HEADER)
- 7. IF LEAD FREE P.N.THE HOUSING WILL WITHSTAND EXPOSURE TO 260°C PEAK TEMPERATURE FOR 10 SECONDS IN A WAVE SOLDER APPLICATION WITH A 1.00MM MINIMUM THICK CIRCUIT BOARD.
- 8. IF LEAD FREE P/N.THE PRODUCT MEETS EUROPEAN UNION DIRECTIVES AND OTHER COUNTRY REGULATIONS AS DESCRIBED IN GS-22-008
- 9. LEAD FREE P/N PACKAGING MEETS GS-14-920 SPECIFICATION
- 10. PRODUCT SPEC:110-263

BELOW	0	88640-155/155LF	91931-31169 91931-31169LF	6.55	NO	LAYOUT 6-1
	5	88640-150/150LF		-0.3	YES	LAYOUT 6-2
	0	88640-145/145LF		6.55	NO	LAYOUT 6-1
	4.3	88640-143/143LF		-0.3	YES	LAYOUT 6-2
	0	88640-125/125LF		9.0	NO	LAYOUT 5-1
	2.2	88640-122/122LF		2.15	YES	LAYOUT 5-2
	0	88640-100/100LF		10.0	NO	LAYOUT 4
ABOVE	0	88640-055/055LF	91931-31169 91931-31169LF	6.55	NO	LAYOUT 3-1
	5	88640-050H/050HLF		-0.3	YES	LAYOUT 3-2
	5	88640-050/050LF		-0.3	YES	LAYOUT 3-2
	5	88640-051/051LF		-0.3	YES	LAYOUT 3-2
	0	88640-045/045LF		6.55	NO	LAYOUT 3-1
	4.3	88640-043/043LF		-0.3	YES	LAYOUT 3-2
	0	88640-025/025LF		9.0	NO	LAYOUT 2-1
	2.2	88640-022/022LF		2.15	YES	LAYOUT 2-2
	0	88640-000/000LF		10.0	NO	LAYOUT 1
P.C.B. SIDE ①	DIM. L	Ⓐ EJECT HEADER ASS'Y	Ⓑ CONAN RECEPTACLE	DIM.S	CAN BE USED FOR SINGLE DECK	P.C.B LAYOUT

ORDERING INFORMATION

NAME	PART NO.	Q'TY
Ⓐ EJECT HEADER ASS'Y	88640-XXXX	1
Ⓑ MATING RECEPTACLE	91931-31169	1

NAME	PART NO.	Q'TY
Ⓐ EJECT HEADER ASS'Y	88640-XXXXLF	1
Ⓑ MATING RECEPTACLE	91931-31169LF	1



mat'l. code	surface ISO 1302	tolerance ISO 406 ISO 1181	projection ISO 1181	product family
ltr	ecn	no	dr	date
tolerances unless otherwise specified				
J	angles	linear	±0.30	MM
scale 1:1				
dr	WENDY CHEN	12/19/95	EJECTOR HEADER ASS'Y 68POS. SMT TYP 1/2/3	
enr	JOSEPH HSIA	12/19/95	dwg no	sheet 2 of 6
chr	JOSEPH HSIA	12/19/95	88640	A4
appd	JENN TSAO	12/19/95	type	CUSTOMER Drawing
sheet index	revision sheet			

FCI CONFIDENTIAL

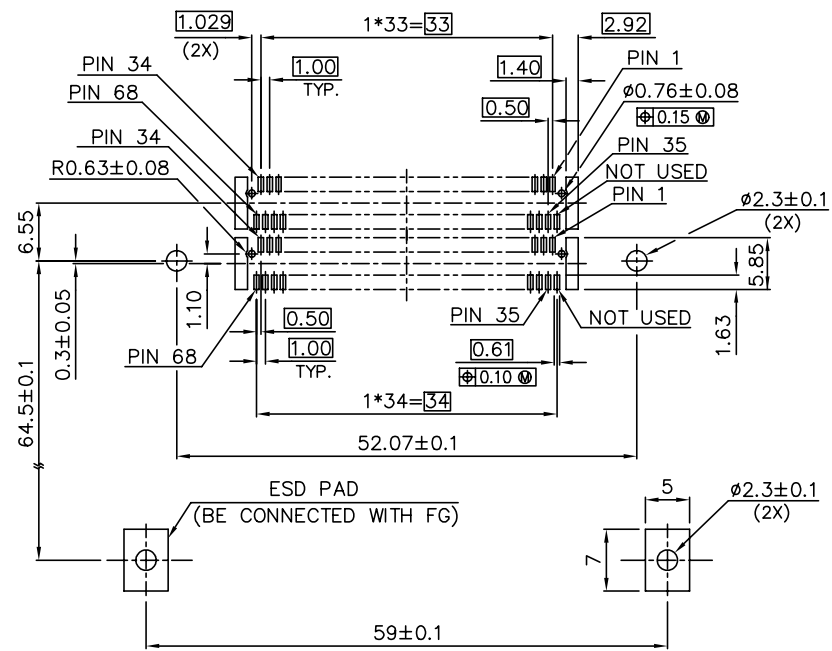


This document is the property of and embodies CONFIDENTIAL and PROPRIETARY information of FCI. No part of this information shown on this document may be used in any way or disclosed to others without the written consent of FCI.
Copyright FCI.

Form: A3

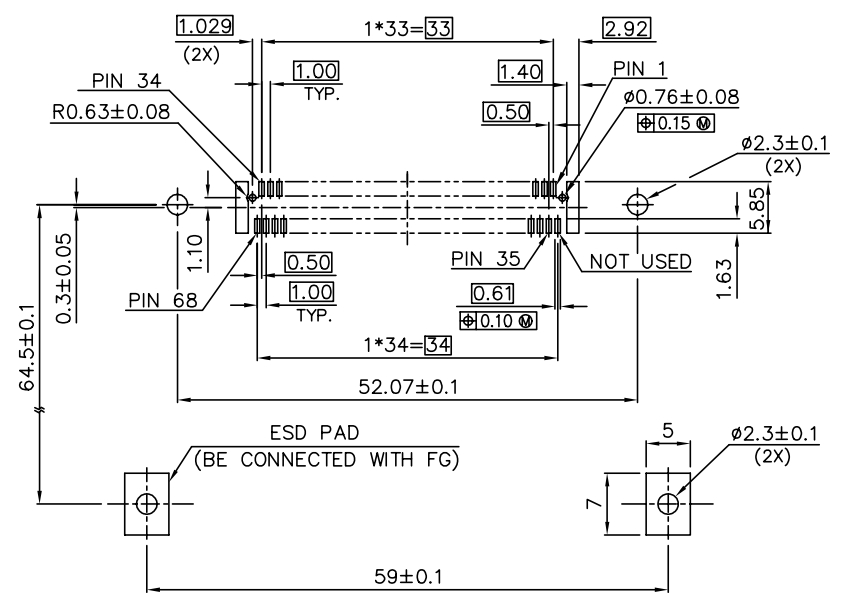
USED FOR 88640-143 WITH 88640-145
USED FOR 88640-150 WITH 88640-155

USED FOR 88640-143LF WITH 88640-145LF
USED FOR 88640-150LF WITH 88640-155LF



RECOMMENDED P.C.B. LAYOUT 6-1 (MOUNTED SIDE)

USED FOR 88640-143
USED FOR 88640-150
USED FOR 88640-143LF
USED FOR 88640-150LF



RECOMMENDED P.C.B. LAYOUT 6-2 (MOUNTED SIDE)

mat'l. code	surface	tolerance	projection	product family
	ISO 1302	ISO 406 ISO 1101	1:1	
tr	ec	no	dr	date
tolerances unless otherwise specified				
J		angles	linear	± 0.30
		±2'	MM	
		dr	WENDY CHEN	12/19/95
		enr	JOSEPH HSIA	12/19/95
		chr	JOSEPH HSIA	12/19/95
		app	JENN TSAO	12/19/95
sheet index			revision sheet	
EJECTOR HEADER ASS'Y 68POS. SMT TYP 1/2/3				scale 1.5 : 1
dwg no			88640	sheet 6 of 6 size A4
type			CUSTOMER	Drawing