



Chipsmall Limited consists of a professional team with an average of over 10 year of expertise in the distribution of electronic components. Based in Hongkong, we have already established firm and mutual-benefit business relationships with customers from,Europe,America and south Asia,supplying obsolete and hard-to-find components to meet their specific needs.

With the principle of “Quality Parts,Customers Priority,Honest Operation,and Considerate Service”,our business mainly focus on the distribution of electronic components. Line cards we deal with include Microchip,ALPS,ROHM,Xilinx,Pulse,ON,Everlight and Freescale. Main products comprise IC,Modules,Potentiometer,IC Socket,Relay,Connector.Our parts cover such applications as commercial,industrial, and automotives areas.

We are looking forward to setting up business relationship with you and hope to provide you with the best service and solution. Let us make a better world for our industry!



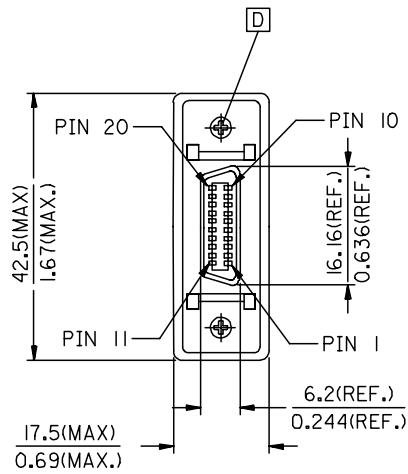
Contact us

Tel: +86-755-8981 8866 Fax: +86-755-8427 6832

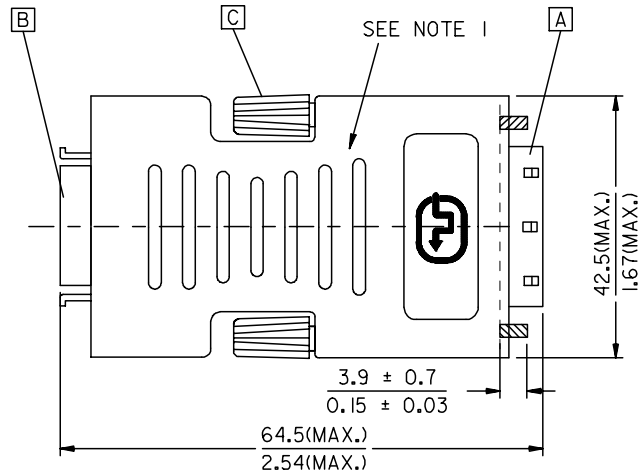
Email & Skype: info@chipsmall.com Web: www.chipsmall.com

Address: A1208, Overseas Decoration Building, #122 Zhenhua RD., Futian, Shenzhen, China

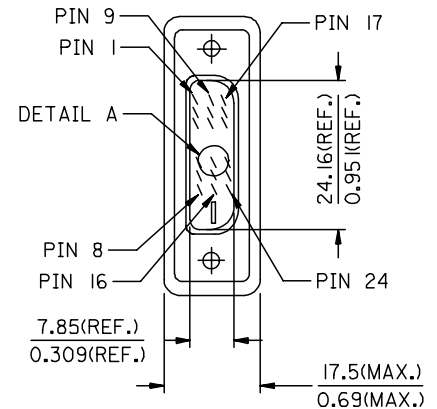




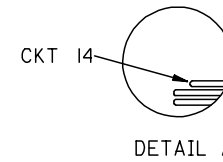
DFP(F)



BACK SIDE



DVI_D(M)



DETAIL A

ENTER DESCRIPTION EC NO: DG2006-0186 DRWN:PDAI CHKD: APPR:TKAN	DESCRIPTION 2006/03/09 2006/03/09 2006/03/10	QUALITY SYMBOLS	GENERAL TOLERANCES (UNLESS SPECIFIED)	DIMENSION STYLE	SCALE	DESIGN UNITS	THIRD ANGLE PROJECTION																
		$\nabla = 0$ $\triangle = 0$	<table border="1"> <thead> <tr> <th></th> <th>mm</th> <th>INCH</th> </tr> </thead> <tbody> <tr> <td>4 PLACES</td> <td>± ---</td> <td>± ---</td> </tr> <tr> <td>3 PLACES</td> <td>± ---</td> <td>± ---</td> </tr> <tr> <td>2 PLACES</td> <td>± ---</td> <td>± ---</td> </tr> <tr> <td>1 PLACE</td> <td>± ---</td> <td>± ---</td> </tr> </tbody> </table>		mm	INCH	4 PLACES	± ---	± ---	3 PLACES	± ---	± ---	2 PLACES	± ---	± ---	1 PLACE	± ---	± ---	MM/IN	---	METRIC		
			mm	INCH																			
		4 PLACES	± ---	± ---																			
3 PLACES	± ---	± ---																					
2 PLACES	± ---	± ---																					
1 PLACE	± ---	± ---																					
DRAFT WHERE APPLICABLE MUST REMAIN WITHIN DIMENSIONS	<table border="1"> <thead> <tr> <th>DRAWN BY</th> <th>DATE</th> <th>TITLE</th> </tr> </thead> <tbody> <tr> <td>PDAI</td> <td>2006/03/07</td> <td>DVI_D(M)-DFP(F) ADAPTER</td> </tr> <tr> <td>CHECKED BY</td> <td>DATE</td> <td></td> </tr> <tr> <td>ZXDENG</td> <td>2006/03/07</td> <td></td> </tr> <tr> <td>APPROVED BY</td> <td>DATE</td> <td></td> </tr> <tr> <td>BORON</td> <td>2006/03/07</td> <td></td> </tr> </tbody> </table>	DRAWN BY	DATE	TITLE	PDAI	2006/03/07	DVI_D(M)-DFP(F) ADAPTER	CHECKED BY	DATE		ZXDENG	2006/03/07		APPROVED BY	DATE		BORON	2006/03/07		MOLEX INCORPORATED			
DRAWN BY	DATE	TITLE																					
PDAI	2006/03/07	DVI_D(M)-DFP(F) ADAPTER																					
CHECKED BY	DATE																						
ZXDENG	2006/03/07																						
APPROVED BY	DATE																						
BORON	2006/03/07																						
REV				MATERIAL NO.	DOCUMENT NO.	SHEET NO.																	
				88741-8800	SD-88741-009	1 OF 2																	
				SIZE	THIS DRAWING CONTAINS INFORMATION THAT IS PROPRIETARY TO MOLEX INCORPORATED AND SHOULD NOT BE USED WITHOUT WRITTEN PERMISSION																		
				A/4																			

NOTE:1. MOLD WITH SNOW WHITE PVC RESIN 887800077 FOR ADAPTOR COVER.

2. DVI CONNCEOTOR SPECIFICATION

2.1 REFER TO PRODUCT SPEC. PS74320-0001.

2.2 CONTACT PLATING: AU FLASH.

3. ELECTRICAL PERFORMANCE

3.1 INSULATION RESISANCE: 20M Ohms Min

3.2 DIELECTRIC STRENGTH: 300V DC FOR 10 MILLISECONDS.

4. ADAPTOR SPECIFICATION

4.1 REFER TO PRODUCT SPEC. PS88741-8800.

5. THIS PRODUCT MUST MEET MX RoHS COMPLIANCE.

6. CONNECTION DIAGRAM

SHIEDL	SHIELD	GROUND
PIN 6	PIN 24	TMDS CLOCK-
PIN 5	PIN 23	TMDS CLOCK+
PIN 4	PIN 22	TMDS CLOCK SHIELD
PIN 14	PIN 19	TMDS DATA 0 SHIELD
PIN 15	PIN 18	TMDS DATA 0+
PIN 16	PIN 17	TMDS DATA 0-
PIN 18	PIN 16	HOT PLUG DETECT
PIN 7	PIN 15	GROUND(+5V & HV SYNC.)
PIN 8	PIN 14	POWER +5V
PIN 3	PIN 11	TMDS DATA 1 SHIELD
PIN 1	PIN 10	TMDS DATA 1+
PIN 2	PIN 9	TMDS DATA 1-
PIN 19	PIN 7	DDC DATA
PIN 20	PIN 6	DDC CLOCK
PIN 13	PIN 3	TMDS DATA 2 SHIELD
PIN 11	PIN 2	TMDS DATA 2+
PIN 12	PIN 1	TMDS DATA 2-
DFP(F)	DVI_D	CABLE FUNCTION

7. MATERIAL LIST

ITEM	DESCRIPTION
D	DFP CONNECTOR FEMALE SCREW 887806063
C	SCREW (FOR COVER) 887806003
B	DFP FEMALE CONNECTOR 887899292
A	DVI_D SINGLE CHANNEL G/F CONNECTOR 743230001

ENTER DESCRIPTION EC NO: DG2006-0186 DRWN:PDAI 2006/03/09 CHKD: 2006/03/09 APPR:TKAN 2006/03/10 D REV	QUALITY SYMBOLS ▽=0 ▽=0	GENERAL TOLERANCES (UNLESS SPECIFIED)		DIMENSION STYLE MM/IN		SCALE ---	DESIGN UNITS METRIC	THIRD ANGLE PROJECTION	
		4 PLACES	± ---	± ---	DRAWN BY PDAI	DATE 2006/03/07	TITLE DVI_D(M)-DFP(F) ADAPTER		
		3 PLACES	± ---	± ---	CHECKED BY ZXDENG	DATE 2006/03/07	APPROVED BY BORON		
		2 PLACES	± ---	± ---	APPROVED BY BORON		DATE 2006/03/07	MATERIAL NO. 88741-8800	
1 PLACE		± ---	± ---	ANGULAR ± ---°		MOLEX MOLEX INCORPORATED		SHEET NO. 2 OF 2	
DRAFT WHERE APPLICABLE MUST REMAIN WITHIN DIMENSIONS				THIS DRAWING CONTAINS INFORMATION THAT IS PROPRIETARY TO MOLEX INCORPORATED AND SHOULD NOT BE USED WITHOUT WRITTEN PERMISSION					