



Chipsmall Limited consists of a professional team with an average of over 10 year of expertise in the distribution of electronic components. Based in Hongkong, we have already established firm and mutual-benefit business relationships with customers from,Europe,America and south Asia,supplying obsolete and hard-to-find components to meet their specific needs.

With the principle of “Quality Parts,Customers Priority,Honest Operation,and Considerate Service”,our business mainly focus on the distribution of electronic components. Line cards we deal with include Microchip,ALPS,ROHM,Xilinx,Pulse,ON,Everlight and Freescale. Main products comprise IC,Modules,Potentiometer,IC Socket,Relay,Connector.Our parts cover such applications as commercial,industrial, and automotives areas.

We are looking forward to setting up business relationship with you and hope to provide you with the best service and solution. Let us make a better world for our industry!



Contact us

Tel: +86-755-8981 8866 Fax: +86-755-8427 6832

Email & Skype: info@chipsmall.com Web: www.chipsmall.com

Address: A1208, Overseas Decoration Building, #122 Zhenhua RD., Futian, Shenzhen, China



7 6 5 4 3 2 1

E

E

D

D

C

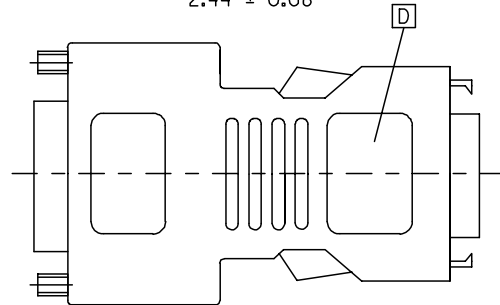
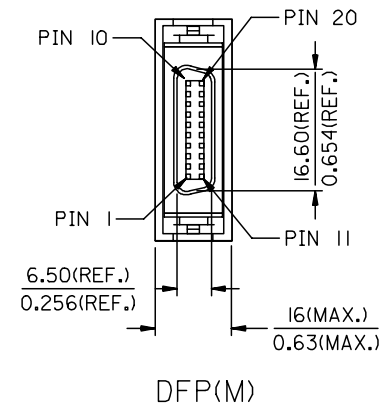
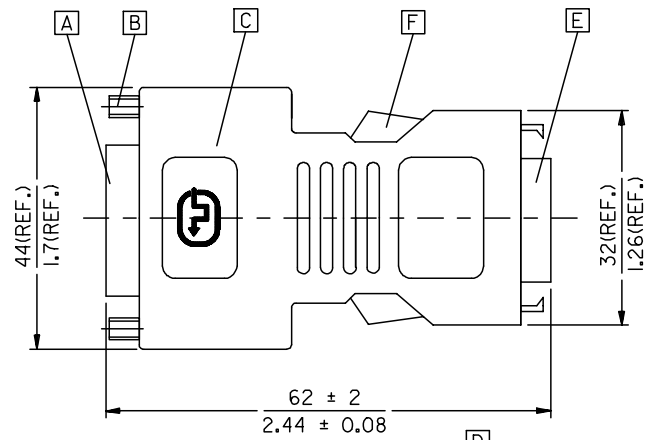
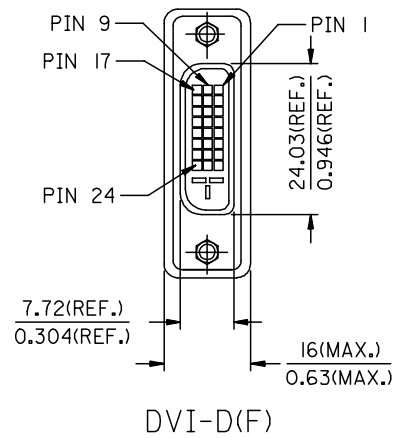
C

B

B

A

A



BACK SIDE

ENTER DESCRIPTION EC NO: DG2006-0186 DRWN:PDAI CHKD: APPR:TKAN	2006/03/09 2006/03/09 2006/03/10	QUALITY SYMBOLS ▽=0 ◻=0	GENERAL TOLERANCES (UNLESS SPECIFIED)		DIMENSION STYLE MM/IN		SCALE ---	DESIGN UNITS METRIC	THIRD ANGLE PROJECTION	
	DESCRIPTION REV		4 PLACES ± --- ± --- 3 PLACES ± --- ± --- 2 PLACES ± --- ± --- 1 PLACE ± --- ± --- ANGULAR ± ---°	DRAWN BY PDAI	DATE 2006/03/07	TITLE DVI_D(F)-DFP(M) ADAPTER				
			DRAFT WHERE APPLICABLE MUST REMAIN WITHIN DIMENSIONS	CHECKED BY ZXDENG	DATE 2006/03/07	APPROVED BY BORON				
				MATERIAL NO. 88741-9300	DOCUMENT NO. SD-88741-014	MOLEX INCORPORATED		SHEET NO. 1 OF 2		

tb_frame_A4_P_ME_T
Rev. D 2004/04/02

6 5 4 3 2 1

- NOTE:1. PLASTIC COVER: SNOW WHITE UL GRADE ABS.
 2. DVI CONNCEOTOR SPECIFICATION
 2.1 REFER TO PRODUCT SPEC. PS-74320-001
 2.2 CONTACT PLATING: AU FLASH.
 3. ELECTRICAL PERFORMANCE
 3.1 INSULATION RESISANCE: 20 M Ohms Min
 3.2 DIELECTRIC STRENGTH: 300V DC FOR 10 MILLISECONDS.
 4. ADAPTOR SPECIFICATION
 4.1 REFER TO PRODUCT SPEC. PS8874I-8800.
 5. THIS PRODUCT MUST MEET MX RoHS COMPLIANCE.

7. MATERIAL LIST

ITEM	DESCRIPTION
F	SNOW WHITE LATCH 887899305
E	DFP20 CONNECTOR 887899294
D	DVI(F) TO DFP(M) ADAPTER BOTTOM COVER 887899307
C	DVI(F) TO DFP(M) ADAPTER TOP COVER 887899302
B	DVID FEMALE SCREW 887806066
A	DVID FEMALE CONNECTOR 743207000

6. CONNECTION DIAGRAM

SHIELD	SHIEDL	GROUND
PIN 24	PIN 6	TMDS CLOCK-
PIN 23	PIN 5	TMDS CLOCK+
PIN 22	PIN 4	TMDS CLOCK SHIELD
PIN 19	PIN 14	TMDS DATA 0 SHIELD
PIN 18	PIN 15	TMDS DATA 0+
PIN 17	PIN 16	TMDS DATA 0-
PIN 16	PIN 18	HOT PLUG DETECT
PIN 15	PIN 7	GROUND(+5V & HV SYNC.)
PIN 14	PIN 8	POWER +5V
PIN 11	PIN 3	TMDS DATA 1 SHIELD
PIN 10	PIN 1	TMDS DATA 1+
PIN 9	PIN 2	TMDS DATA 1-
PIN 7	PIN 19	DDC DATA
PIN 6	PIN 20	DDC CLOCK
PIN 3	PIN 13	TMDS DATA 2 SHIELD
PIN 2	PIN 11	TMDS DATA 2+
PIN 1	PIN 12	TMDS DATA 2-
DVI_D(F)	DFP(M)	CABLE FUNCTION

ENTER DESCRIPTION EC NO: DG2006-0186 DRWN: PDAI CHKD: APPR: TKAN	2006/03/09 2006/03/09 2006/03/10	DESCRIPTION REV	QUALITY SYMBOLS	GENERAL TOLERANCES (UNLESS SPECIFIED)	DIMENSION STYLE	SCALE	DESIGN UNITS	THIRD ANGLE PROJECTION		
			$\nabla=0$ $\sphericalcap=0$	mm INCH 4 PLACES \pm --- \pm --- 3 PLACES \pm --- \pm --- 2 PLACES \pm --- \pm --- 1 PLACE \pm --- \pm --- ANGULAR \pm ---°	MM/IN	---	METRIC	DRAWN BY DATE PDAI 2006/03/07 CHECKED BY DATE ZXDENG 2006/03/07 APPROVED BY DATE BORON 2006/03/07	TITLE	DVI_D(F)-DFP(M) ADAPTER
			DRAFT WHERE APPLICABLE MUST REMAIN WITHIN DIMENSIONS	MATERIAL NO. 88741-9300	DOCUMENT NO. SD-88741-014	SHEET NO. 2 OF 2				
			SIZE Δ 4 THIS DRAWING CONTAINS INFORMATION THAT IS PROPRIETARY TO MOLEX INCORPORATED AND SHOULD NOT BE USED WITHOUT WRITTEN PERMISSION							