



Chipsmall Limited consists of a professional team with an average of over 10 year of expertise in the distribution of electronic components. Based in Hongkong, we have already established firm and mutual-benefit business relationships with customers from,Europe,America and south Asia,supplying obsolete and hard-to-find components to meet their specific needs.

With the principle of “Quality Parts,Customers Priority,Honest Operation,and Considerate Service”,our business mainly focus on the distribution of electronic components. Line cards we deal with include Microchip,ALPS,ROHM,Xilinx,Pulse,ON,Everlight and Freescale. Main products comprise IC,Modules,Potentiometer,IC Socket,Relay,Connector.Our parts cover such applications as commercial,industrial, and automotives areas.

We are looking forward to setting up business relationship with you and hope to provide you with the best service and solution. Let us make a better world for our industry!



Contact us

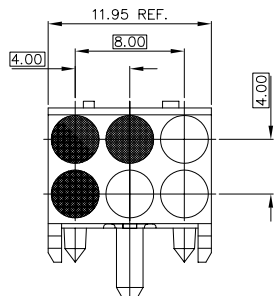
Tel: +86-755-8981 8866 Fax: +86-755-8427 6832

Email & Skype: info@chipsmall.com Web: www.chipsmall.com

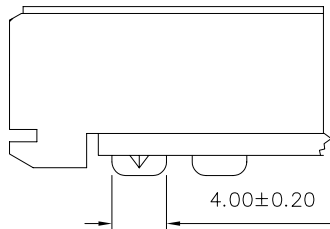
Address: A1208, Overseas Decoration Building, #122 Zhenhua RD., Futian, Shenzhen, China



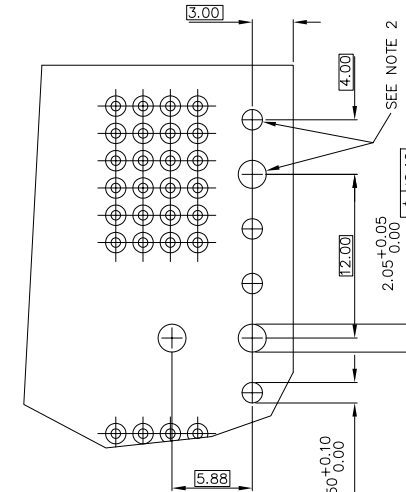
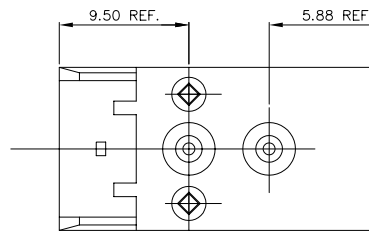
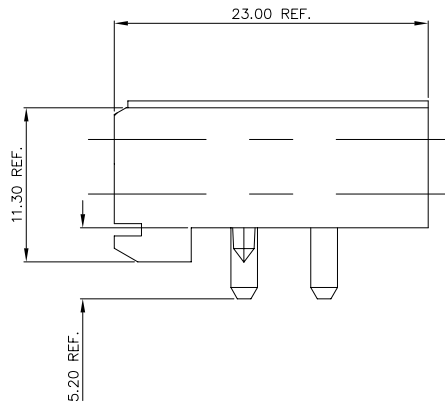
FRONT VIEW



HEAT-STAKE PEG VERSION



ASSEMBLY AFTER HOT RIVETING



REQUIRED PC BOARD LAYOUT COMPONENT SIDE

NOTE:

- ① HOUSING MATERIAL: LCP, 30% GLASS FILLED
FLAME RETARDANT PER UL 94V-0
COLOR: NATURAL
- ② INDICATED HOLES ARE UNPLATED
- 3. SHADED AREA DENOTES PLUGGED (CLOSE) POSITION.
SEE SHEET #4 FOR PLUG COMBINATIONS AND PRODUCT NUMBERS.
PLUG COMBINATION SHOWN ABOVE IS FOR REFERENCE ONLY.
(PLUG COMBINATION #13)
- ④ ADD "LF" SUFFIX AT THE END OF PART NUMBER FOR LEAD FREE OPTION.
- 5. THIS PRODUCT MEETS EUROPEAN UNION DIRECTIVES AND OTHER COUNTRY REGULATION AS DESCRIBED IN GS-22-008.
- 6. THE HOUSING WILL WITHSTAND EXPOSURE TO 260°C PEAK TEMPERATURE FOR 15 SECONDS IN A WAVE SOLDER APPLICATION WITH A 1.5mm MINIMUM THICK CIRCUIT BOARD OR FOR 10-20 SECONDS IN A CONVECTION, INFRA-RED OR VAPOR PHASE REFLOW OVEN. SEE APPLICATION NOTES/PROCEDURES IF THEY ARE AVAILABLE.

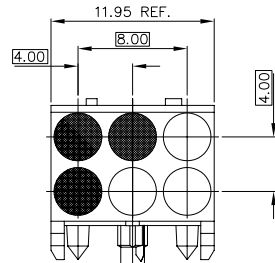
mat'l. code		surface ISO 1302 ✓		tolerance ISO 406 ISO 1101		projection MM		product family METRAL ACC	
ltr	ecn	no	dr	date	tolerances unless otherwise specified		title		
J	V10105	JRW		1/04/01	angles	.0±.3	RECEPTACLE KEYING MODULE		
K	V12705	CGD		11/14/01	linear	.00±.13	scale 1:1		
L	V04-0174	HTB		2/18/04	0'±2'	.000±.051	sheet 1 of 6 size		
M	M05-0264	MHT		12/28/05	dr	S.STONER	4/16/93	88916 A3	
N	M06-0077	MHT		2/17/06	enrg	R.DOETRICH	4/16/93	type Product Customer Drawing	
P	M06-0147	MHT		4/07/06	chr	S.STONER	4/16/93		
R	M06-0159	MHT		5/08/06	appd	S.STONER	4/16/93		
sheet index	revision	R	R	R	R	R	R	R	
	sheet	1	2	3	4	5	6		



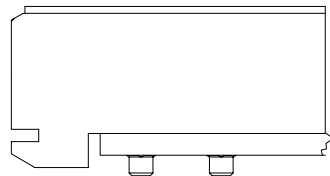
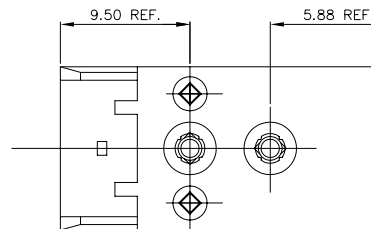
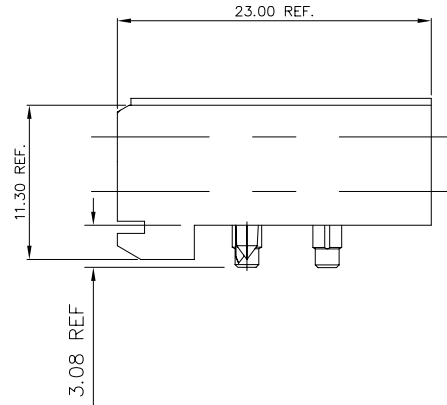
FCIconnect.com

Copyright FCI

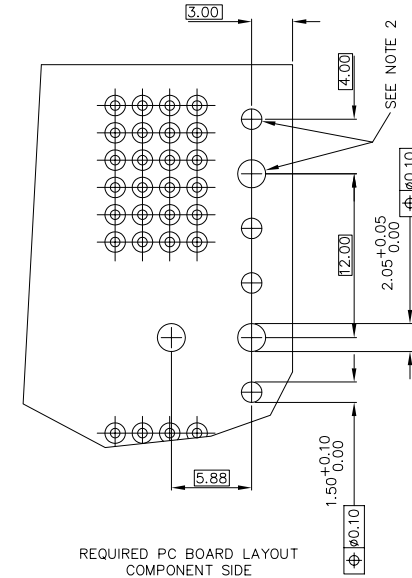
FRONT VIEW



PRESS PEG VERSION



ASSEMBLY ON P.C.B.



REQUIRED PC BOARD LAYOUT
COMPONENT SIDE

NOTE:

- ① HOUSING MATERIAL: LCP, 30% GLASS FILLED
FLAME RETARDANT ACC. UL 94V-0
COLOR: NATURAL
- ② INDICATED HOLES ARE UNPLATED
- ③ SHADED AREA DENOTES PLUGGED (CLOSE) POSITION.
SEE SHEET #4 FOR PLUG COMBINATIONS AND PRODUCT NUMBERS.
PLUG COMBINATION SHOWN ABOVE IS FOR REFERENCE ONLY.
(PLUG COMBINATION #13)

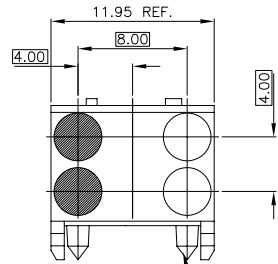
④ ADD "LF" SUFFIX AT THE END OF PART NUMBER FOR LEAD FREE OPTION.

5. THIS PRODUCT MEETS EUROPEAN UNION DIRECTIVES AND OTHER COUNTRY REGULATION AS DESCRIBED IN GS-22-008.

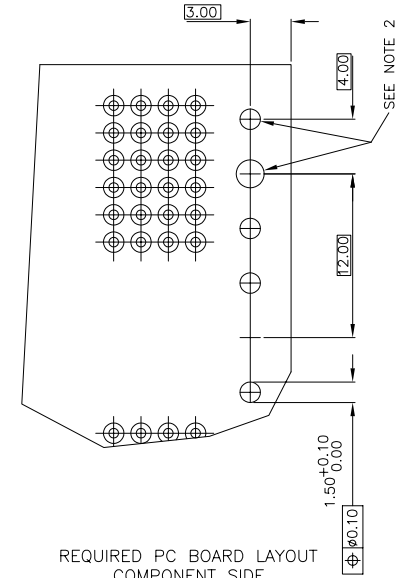
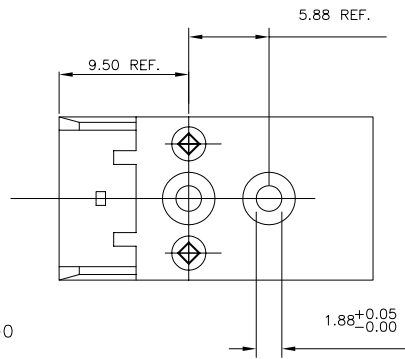
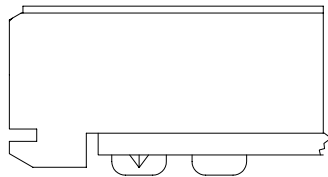
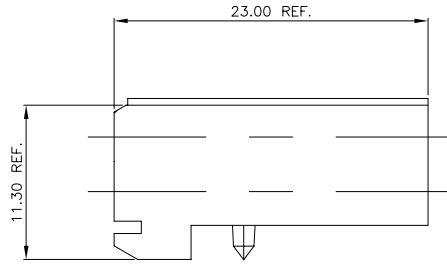
6. THE HOUSING WILL WITHSTAND EXPOSURE TO 260°C PEAK TEMPERATURE FOR 15 SECONDS IN A WAVE SOLDER APPLICATION WITH A 1.5mm MINIMUM THICK CIRCUIT BOARD OR FOR 10-20 SECONDS IN A CONVECTION, INFRA-RED OR VAPOR PHASE REFLOW OVEN. SEE APPLICATION NOTES/PROCEDURES IF THEY ARE AVAILABLE.

mat'l. code		surface ISO 1302 ✓		tolerance ISO 406 ISO 1101		projection MM		product family METRAL ACC	
ltr	ecn	no	dr	date	tolerances unless otherwise specified		title RECEPTACLE KEYING MODULE		
R					angles	linear	MM		
					0°±2'	.0±.3 .00±.13 .000±.051	scale 1:1		
			dr	S.STONER	4/16/93			dwg no	
			enr	R.DOUTRICH	4/16/93			sheet 2 of 6	
			chr	S.STONER	4/16/93			size	
			appd	S.STONER	4/16/93			A3	
sheet index		revision sheet						type Product Customer Drawing	

FRONT VIEW



SCREW DOWN VERSION



REQUIRED PC BOARD LAYOUT COMPONENT SIDE

NOTE:

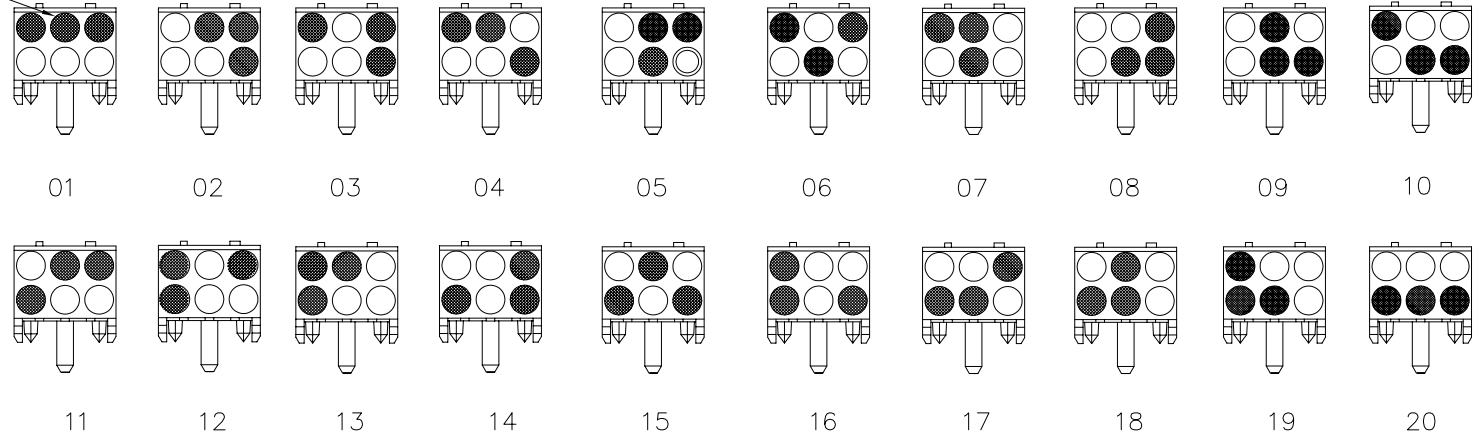
- ① HOUSING MATERIAL: LCP, 30% GLASS FILLED
FLAME RETARDANT PER UL 94V-0
COLOR: NATURAL
- ② INDICATED HOLES ARE UNPLATED
3. TWO MOUNTING SCREW, P/N 63787-001, FOR MAX PCB THICKNESS 2.4MM[0.094"] OR P/N 63787-002 FOR MAX. PCB THICKNESS 3.2MM[0.126"] MUST BE ORDERED SEPARATLY.
4. SHADED AREA DENOTES PLUGGED (CLOSE) POSITION. SEE SHEET #6 FOR PLUG COMBINATIONS AND PRODUCT NUMBERS. PLUG COMBINATION SHOWN ABOVE IS FOR REFERENCE ONLY. (PLUG COMBINATION #04)
- ⑤ ADD "LF" SUFFIX AT THE END OF PART NUMBER FOR LEAD FREE OPTION.
6. THIS PRODUCT MEETS EUROPEAN UNION DIRECTIVES AND OTHER COUNTRY REGULATION AS DESCRIBED IN GS-22-008.
7. THE HOUSING WILL WITHSTAND EXPOSURE TO 260°C PEAK TEMPERATURE FOR 15 SECONDS IN A WAVE SOLDER APPLICATION WITH A 1.5mm MINIMUM THICK CIRCUIT BOARD OR FOR 10-20 SECONDS IN A CONVECTION, INFRA-RED OR VAPOR PHASE REFLOW OVEN. SEE APPLICATION NOTES/PROCEDURES IF THEY ARE AVAILABLE.

mat'l. code		surface ISO 1302 ✓		tolerance ISO 406 ISO 1101		projection MM		product family METRAL ACC	
ltr	ecn	no	dr	date	tolerances unless otherwise specified		title		RECEPTACLE KEYING MODULE
R					angles	linear	MM		
					0°±2'		scale 1:1		
					dr	S.STONER	4/16/93	dwg no	
					enr	R.DOUTRICH	4/16/93	sheet 3 of 6	
					chr	S.STONER	4/16/93	size	
					appd	S.STONER	4/16/93	A3	
sheet index		revision sheet						type Product Customer Drawing	

PRODUCT NUMBER 88916-XYZ

PLUG COMBINATIONS - (FRONT VIEW)

PLUGGED POSITION
SEE NOTE 1



PRODUCT NUMBER HEAT-STAKE VERSION	PRODUCT NUMBER PRESS-PEG VERSION	COMBINATION NUMBER
88916-101	88916-201	01
88916-102	88916-202	02
88916-103	88916-203	03
88916-104	88916-204	04
88916-105	88916-205	05
88916-106	88916-206	06
88916-107	88916-207	07
88916-108	88916-208	08
88916-109	88916-209	09
88916-110	88916-210	10
88916-111	88916-211	11
88916-112	88916-212	12
88916-113	88916-213	13
88916-114	88916-214	14
88916-115	88916-215	15
88916-116	88916-216	16
88916-117	88916-217	17
88916-118	88916-218	18
88916-119	88916-219	19
88916-120	88916-220	20

NOTES:

- ① PLUGGED (CLOSE) POSITIONS ARE SHOWN SHADED.
- 2. HEATSTAKE VERSIONS SHOWN ABOVE FOR REFERENCE ONLY.

mat'l. code		surface ISO 1302 ✓		tolerance ISO 406 ISO 1101		projection MM		product family METRAL ACC	
ltr		ecn no dr		date		tolerances unless otherwise specified		title	
R						.0±.3 linear .00±.13 0'±2'		RECEPTACLE KEYING MODULE	
						.000±.051		scale 1:1	
				dr S.STONER 4/16/93				dwg no sheet 4 of 6 size	
				enr R.DOUTRICH 4/16/93				88916 A3	
				chr S.STONER 4/16/93					
				appd S.STONER 4/16/93				type Product Customer Drawing	
sheet index		revision sheet							

PLUG COMBINATIONS – (FRONT VIEW)

PART NUMBER	CONFIGURATION	APPLICABLE NOTES
88916-301		PRESS PEG
88916-302		PRESS PEG
88916-303		PRESS PEG
88916-304		PRESS PEG
88916-305		PRESS PEG
88916-306		PRESS PEG
88916-307		PRESS PEG

PART NUMBER	CONFIGURATION	APPLICABLE NOTES
88916-308		PRESS PEG

- ①. ADD "LF" SUFFIX AT THE END OF PART NUMBER FOR LEAD FREE OPTION.
2. THIS PRODUCT MEETS EUROPEAN UNION DIRECTIVES AND OTHER COUNTRY REGULATION AS DESCRIBED IN GS-22-008.
3. THE HOUSING WILL WITHSTAND EXPOSURE TO 260°C PEAK TEMPERATURE FOR 15 SECONDS IN A WAVE SOLDER APPLICATION WITH A 1.5mm MINIMUM THICK CIRCUIT BOARD OR FOR 10-20 SECONDS IN A CONVECTION, INFRA-RED OR VAPOR PHASE REFLOW OVEN. SEE APPLICATION NOTES/PROCEDURES IF THEY ARE AVAILABLE.

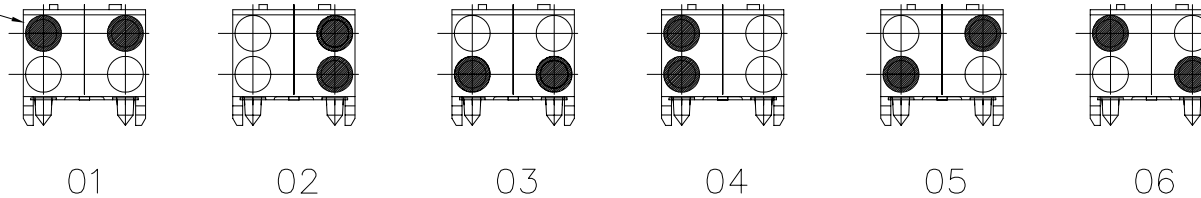
mat'l. code		surface ISO 1302 <input checked="" type="checkbox"/>	tolerance ISO 406 ISO 1101	projection 	product family METRAL ACC
ltr	ecn no	dr	date	tolerances unless otherwise specified	title
R				angles linear 0°±2'	RECEPTACLE KEYING MODULE
				.0±.3 .00±.13 .000±.051	
				scale 1:1	
		dr	S.STONER	4/16/93	dwg no 88916 sheet 5 of 6 size A3
		enr	R.DOUTRICH	4/16/93	
		chr	S.STONER	4/16/93	
		appd	S.STONER	4/16/93	
sheet index	revision sheet				type Product Customer Drawing



Copyright FCJ

PLUG COMBINATIONS – (FRONT VIEW)

PLUGGED POSITION
SEE NOTE 1



PRODUCT NUMBER	COMBINATION NUMBER
88916-401	01
88916-402	02
88916-403	03
88916-404	04
88916-405	05
88916-406	06

NOTES:

1. PLUGGED (CLOSE) POSITION ARE SHOWN SHADE.
2. ADD "LF" SUFFIX AT THE END OF PART NUMBER FOR LEAD FREE OPTION.
3. THIS PRODUCT MEETS EUROPEAN UNION DIRECTIVES AND OTHER COUNTRY REGULATION AS DESCRIBED IN GS-22-008.
4. THE HOUSING WILL WITHSTAND EXPOSURE TO 260°C PEAK TEMPERATURE FOR 15 SECONDS IN A WAVE SOLDER APPLICATION WITH A 1.5mm MINIMUM THICK CIRCUIT BOARD OR FOR 10-20 SECONDS IN A CONVECTION, INFRA-RED OR VAPOR PHASE REFLOW OVEN. SEE APPLICATION NOTES/PROCEDURES IF THEY ARE AVAILABLE.

mat'l. code		surface ISO 1302 ✓		tolerance ISO 406 ISO 1101		projection ⊕		product family METRAL ACC	
ltr		ecn no dr		date		tolerances unless otherwise specified		title	
R						.0±.3 linear .00±.13 0°±2'		RECEPTACLE KEYING MODULE	
						scale 1:1		dwg no	
				dr S.STONER 4/16/93		FCJ		sheet 6 of 6 size	
				enr R.DOUTRICH 4/16/93				88916 A3	
				chr S.STONER 4/16/93				type Product Customer Drawing	
				appd S.STONER 4/16/93					
sheet index		revision sheet							