



Chipsmall Limited consists of a professional team with an average of over 10 year of expertise in the distribution of electronic components. Based in Hongkong, we have already established firm and mutual-benefit business relationships with customers from,Europe,America and south Asia,supplying obsolete and hard-to-find components to meet their specific needs.

With the principle of “Quality Parts,Customers Priority,Honest Operation,and Considerate Service”,our business mainly focus on the distribution of electronic components. Line cards we deal with include Microchip,ALPS,ROHM,Xilinx,Pulse,ON,Everlight and Freescale. Main products comprise IC,Modules,Potentiometer,IC Socket,Relay,Connector.Our parts cover such applications as commercial,industrial, and automotives areas.

We are looking forward to setting up business relationship with you and hope to provide you with the best service and solution. Let us make a better world for our industry!



Contact us

Tel: +86-755-8981 8866 Fax: +86-755-8427 6832

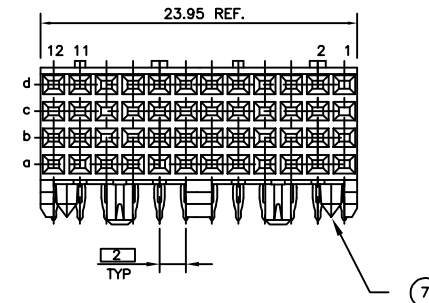
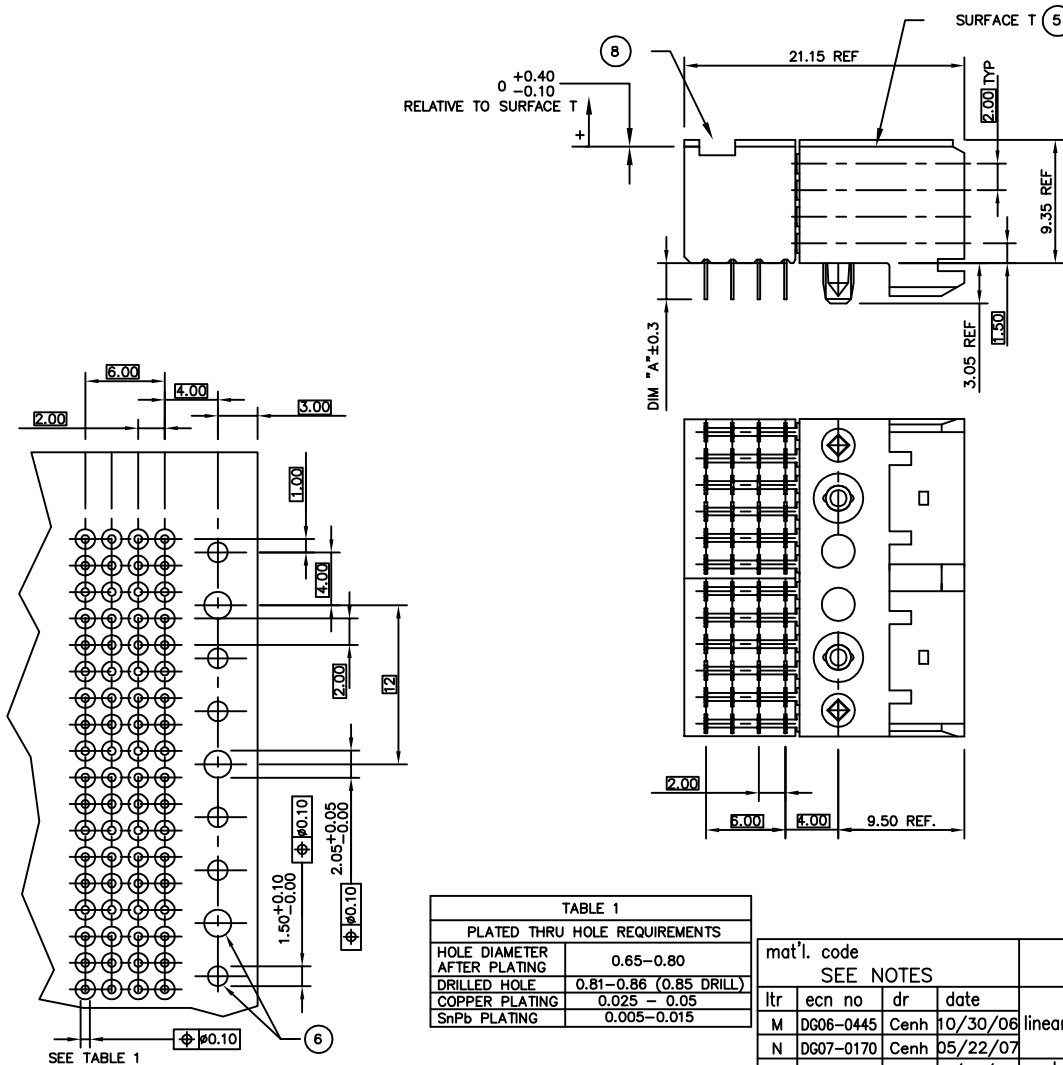
Email & Skype: info@chipsmall.com Web: www.chipsmall.com

Address: A1208, Overseas Decoration Building, #122 Zhenhua RD., Futian, Shenzhen, China



PRODUCT NUMBER	PCB THICKNESS	DIM "A"
88946-X02	1.6	2.90
88946-X12	2.4	3.53
88946-X02LF	1.6	2.90
88946-X12LF	2.4	3.53




PLATING CONTACT AREA:	
DASH NR:	PERFORMANCE LEVEL
-1YY/1YYLF	TELCORDIA CO
-2YY/2YYLF	CUSTOMER SPECIAL
-3YY/3YYLF	CUSTOMER SPECIAL



- NOTES:
- ① CONNECTOR MATERIALS:
HOUSING: LCP, 30% GLASS FILLED, UL 94-V0 COMPLIANT
PRESS BLOCK: GLASS FILLED, HIGH TEMPERATURE RESIN UL 94-V0 COMPLIANT
TERMINAL: PHOSPHOR BRONZE ALLOY
 2. PRESS-FIT TAIL PLATING: 0.5-1.5 μ m TIN LEAD
 3. PRODUCT SPECIFICATION:
GS-12-002
 4. APPLICATION SPECIFICATIONS:
BUS-20-061
GS-20-001
TA-941
 - ⑤ PRODUCT MARKING: (PART NUMBER & LOT CODE).
 - ⑥ INDICATED HOLES ARE UNPLATED.
 - ⑦ DIAMOND LOCATION PEG ARE ONLY EXISTED ON THE BOTH SIDES OF PRODUCT.
 - ⑧ TOP SURFACE OF PRESS BLOCK MAY EXTEND UP TO 0.4MM HIGHER THAN HOUSING. THIS MAY AFFECT THE TAIL LENGTH BEFORE APPLICATION TO A BOARD.
 9. THESE PRODUCTS WHERE THE PART NUMBER ENDS IN "LF" MEET THE EUROPEAN UNION DIRECTIVES AND OTHER COUNTRY REGULATIONS AS DESCRIBED IN GS-22-008.

ALL PRODUCTS WILL WITHSTAND EXPOSURE TO 240°C FOR 60 SECONDS IN A CONVECTION, INFAR-RED OR VAPOR PHASE REFLOW OVEN.
 - ⑩ FOR LEAD FREE PART NUMBERS ADD "LF" SUFFIX. EXAMPLE: 88946-XYLF.

HOLE DIAMETER AFTER PLATING	0.65-0.80
DRILLED HOLE	0.81-0.86 (0.85 DRILL)
COPPER PLATING	0.025 - 0.05
SnPb PLATING	0.005-0.015

mat'l. code SEE NOTES				tolerances unless otherwise specified			CUSTOMER COPY		 www.fciconnect.com		
litr	ecn no	dr	date	linear	.X ±.3		projection 	title			
M	DG06-0445	Cenh	10/30/06		.XX ±.10			B SERIES R/A SIGNAL RECEPT ASSY			
N	DG07-0170	Cenh	05/22/07		.XXX ±.050			4 ROW, 2 MOD, PF			
P	DG08-0171	TER	8/15/08	angles	0° ±2°			product family METRAL (tm)			
R	DG09-0068	Cenh	06/06/09	dr	S.STONER	10/29/92		size	dwg no		code
				enrg	R.DOUTRICH	10/29/92					213
K	V05-0074	LP	4/12/05	chr	S.STONER	10/29/92	scale 1:1	A 88946		sheet	
L	V05-0522	DAI	6/8/05	appd	S.STONER	10/29/92				1 of 1	
sheet index	revision sheet	R 1									