



Chipsmall Limited consists of a professional team with an average of over 10 year of expertise in the distribution of electronic components. Based in Hongkong, we have already established firm and mutual-benefit business relationships with customers from,Europe,America and south Asia,supplying obsolete and hard-to-find components to meet their specific needs.

With the principle of “Quality Parts,Customers Priority,Honest Operation,and Considerate Service”,our business mainly focus on the distribution of electronic components. Line cards we deal with include Microchip,ALPS,ROHM,Xilinx,Pulse,ON,Everlight and Freescale. Main products comprise IC,Modules,Potentiometer,IC Socket,Relay,Connector.Our parts cover such applications as commercial,industrial, and automotives areas.

We are looking forward to setting up business relationship with you and hope to provide you with the best service and solution. Let us make a better world for our industry!



Contact us

Tel: +86-755-8981 8866 Fax: +86-755-8427 6832

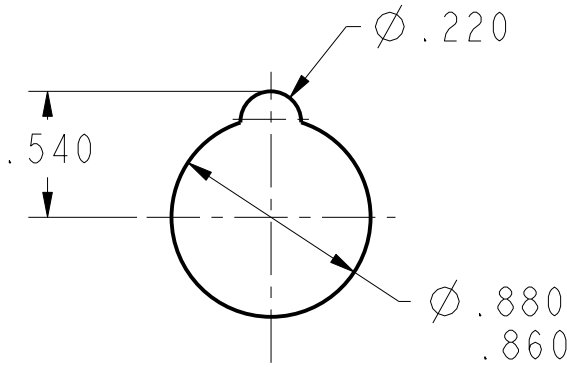
Email & Skype: info@chipsmall.com Web: www.chipsmall.com

Address: A1208, Overseas Decoration Building, #122 Zhenhua RD., Futian, Shenzhen, China

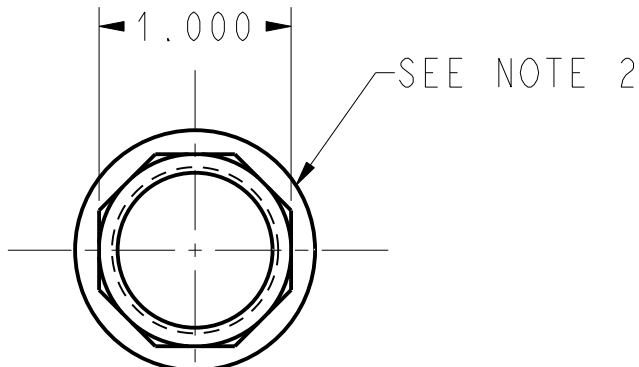


HONEYWELL
PART NUMBER
89477

REV	DOCUMENT	CHANGED BY	CHECK
A	0003744	NM 13APR04	AK

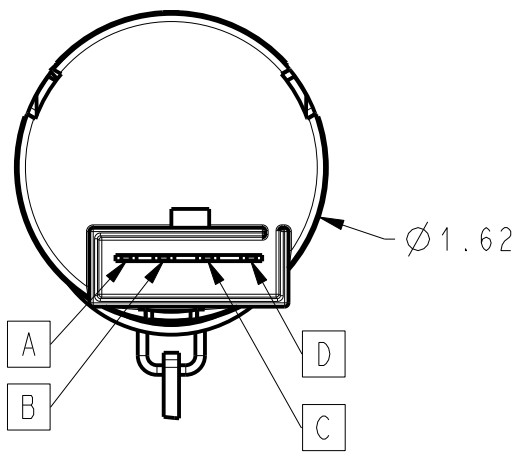


PROPOSED MOUNTING HOLE

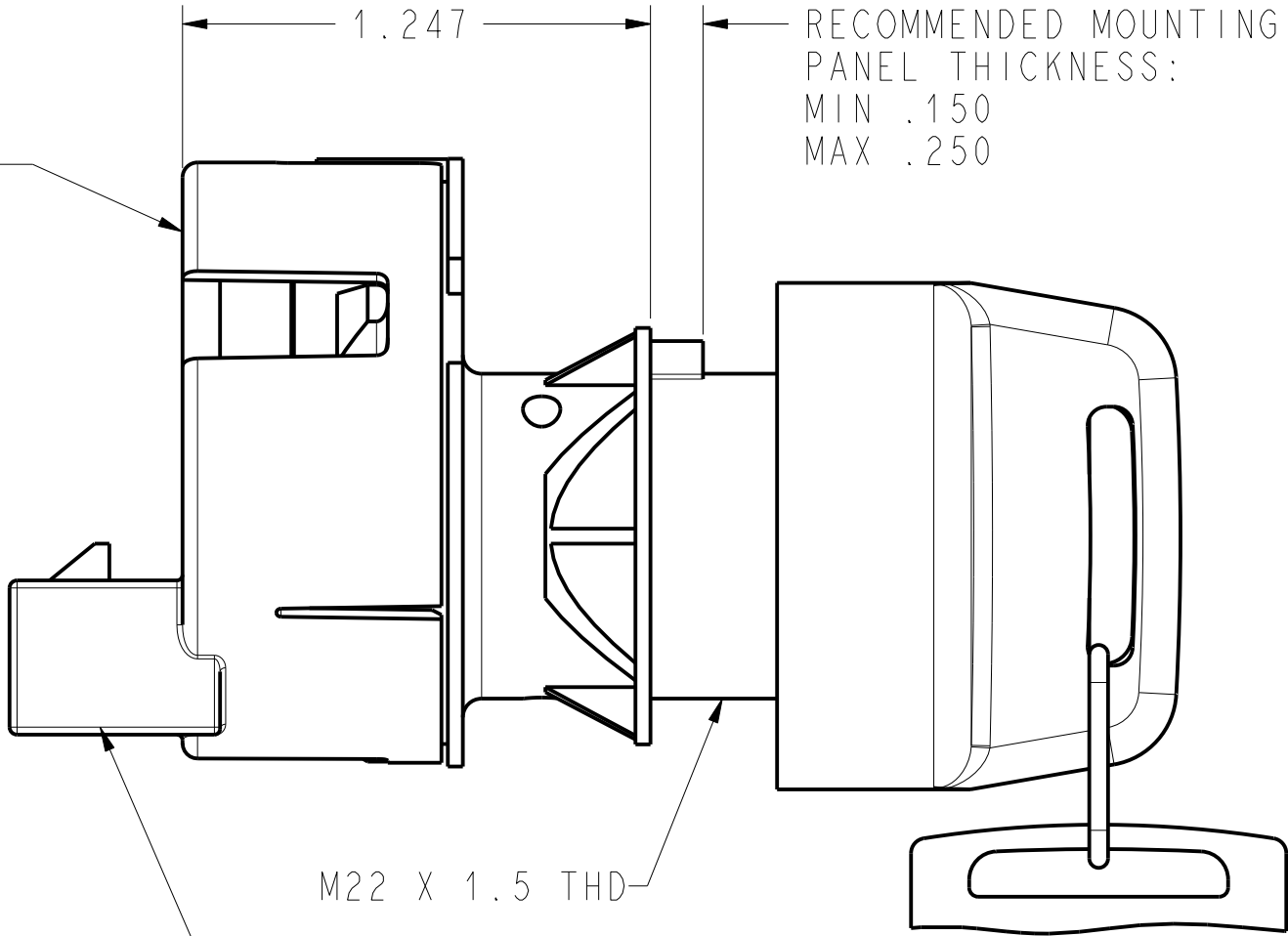


MOUNTING NUT (81942)
TORQUE NUT TO 50 IN. LBS. MAX

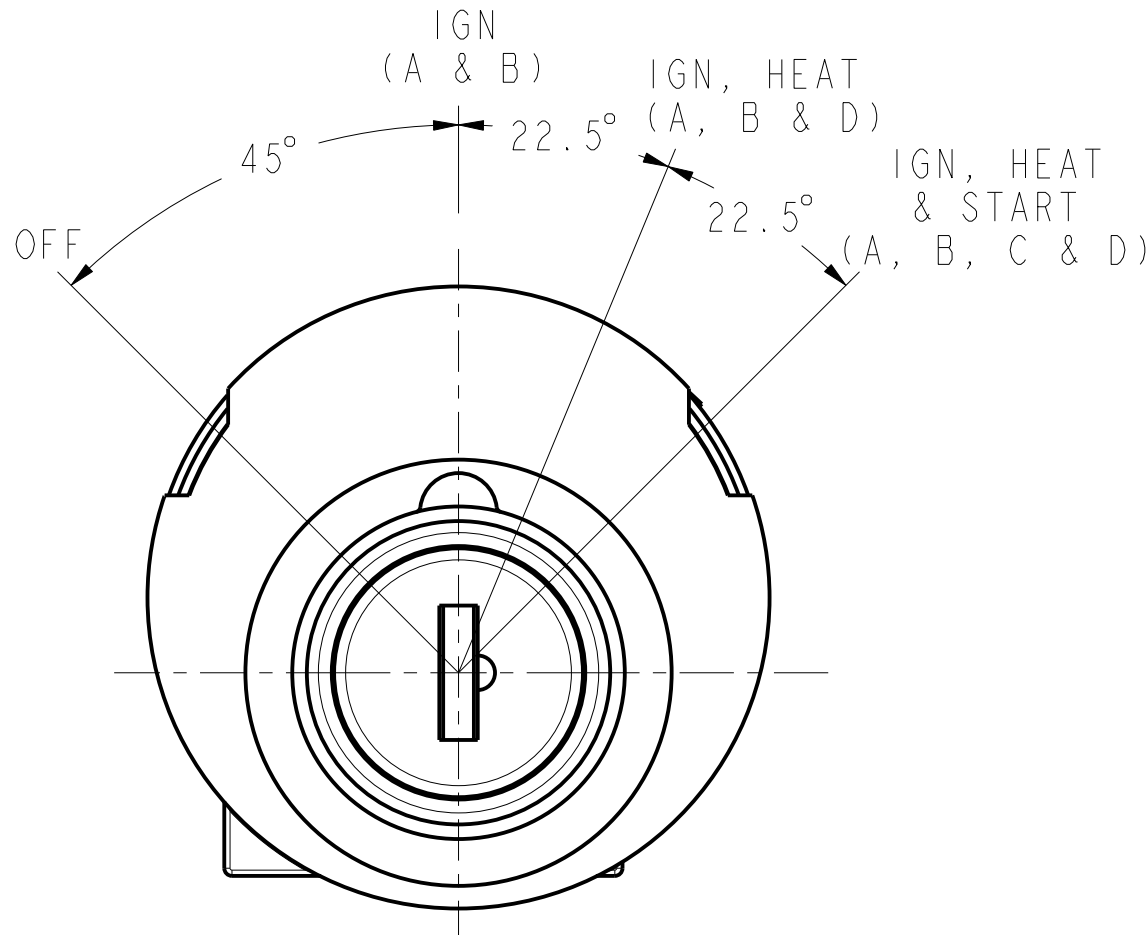
HONEYWELL PART NO., DATE CODE
(SEE NOTE 5) AND OPERATORS CLOCK
NUMBER TO BE PRINTED ON LABEL
AND AFFIXED TO THIS SURFACE



VIEW OF TERMINALS
SCALE 1:1



MATING CONNECTOR
DELPHI /PACKARD ELECTRIC
280 SERIES, 4 WAY METRIPACK
HOUSING: PN 12052856
TERMINALS : PN 12034046




FRONT VIEW

- NOTES
- 1 - OFF/IGN/IGN,HEAT/IGN, HEAT,START (RECOIL BACK TO IGN).
KEY REMOVABLE IN OFF POSITION.
 - 2 - NUT NOT INSTALLED, BUT IS SHIPPED ALONG WITH
SWITCHES PER PACK OP P/N 994400.
 - 3 - MAXIMUM ELECTRICAL RATING: 12 VOLT - 20 AMP
 - 4 - MATERIAL SPECIFICATION:
FRONT HOUSING - 40% MINERAL FILLED NYLON
BACK HOUSING - POLYPROPYLENE
NUT - 40% MINERAL FILLED NYLON
 - 5 - DATE CODE IS A 5 DIGIT NO., 1ST AND 2ND
DIGITS REPRESENT THE YEAR, THE NEXT
3 DIGITS REPRESENT THE DAY.
 - 6 - KEY CODE FOR SWITCH IS 6896.

SIM. TO: 88423

CUSTOMER PRINT

DESIGN UNITS: INCH			DRAWN	NM	13 APR 04	Honeywell			
TOLERANCES UNLESS NOTED:			CHECK	AK	13 APR 04				
NO PLACE	X	±	0.040	THIS DRAWING COVERS A PROPRIETARY ITEM AND IS THE PROPERTY OF HONEYWELL. THIS DRAWING IS NOT TO BE COPIED OR USED WITHOUT THE PERMISSION OF HONEYWELL.		TITLE KEY SWITCH ASSY (4-POSITION)			
ONE PLACE	.X	±	0.020						
TWO PLACE	.XX	±	0.010						
THREE PLACE	.XXX	±	0.005						
FOUR PLACE	.XXXX	±	0.0005						
ANGLES	X	±	2	INTERPRET PER ASME Y14.5M-1994 OTHER HONEYWELL ENGINEERING STANDARDS MAY APPLY		SIZE	TYPE	DRAWING NAME	REV
THIRD ANGLE PROJECTION			Pro/ENGINEER 3D		C	I	89477	A	
									
				SCALE 2:1		SHEET 2 OF 2			