



Chipsmall Limited consists of a professional team with an average of over 10 year of expertise in the distribution of electronic components. Based in Hongkong, we have already established firm and mutual-benefit business relationships with customers from,Europe,America and south Asia,supplying obsolete and hard-to-find components to meet their specific needs.

With the principle of “Quality Parts,Customers Priority,Honest Operation,and Considerate Service”,our business mainly focus on the distribution of electronic components. Line cards we deal with include Microchip,ALPS,ROHM,Xilinx,Pulse,ON,Everlight and Freescale. Main products comprise IC,Modules,Potentiometer,IC Socket,Relay,Connector.Our parts cover such applications as commercial,industrial, and automotives areas.

We are looking forward to setting up business relationship with you and hope to provide you with the best service and solution. Let us make a better world for our industry!



Contact us

Tel: +86-755-8981 8866 Fax: +86-755-8427 6832

Email & Skype: info@chipsmall.com Web: www.chipsmall.com

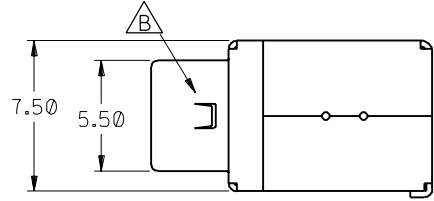
Address: A1208, Overseas Decoration Building, #122 Zhenhua RD., Futian, Shenzhen, China



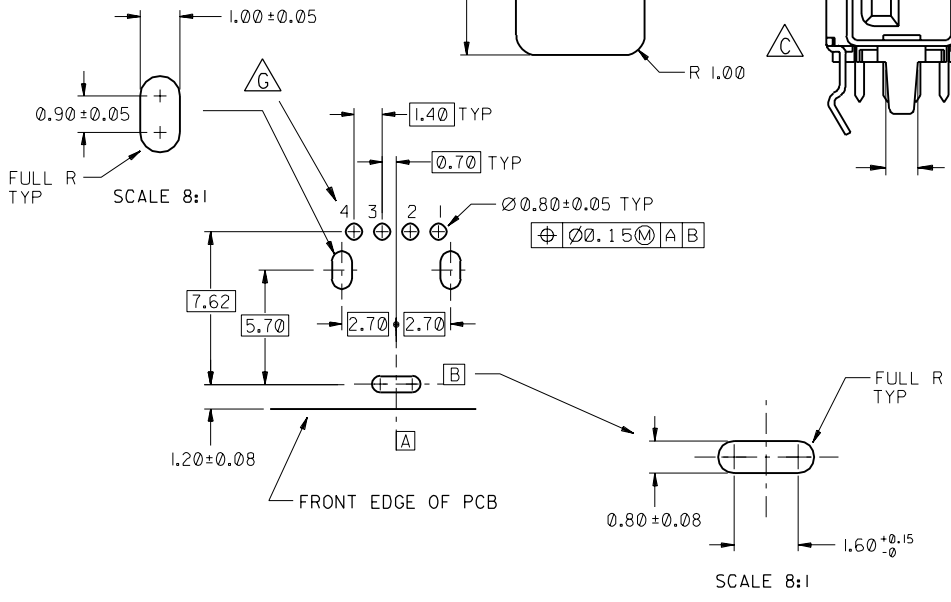
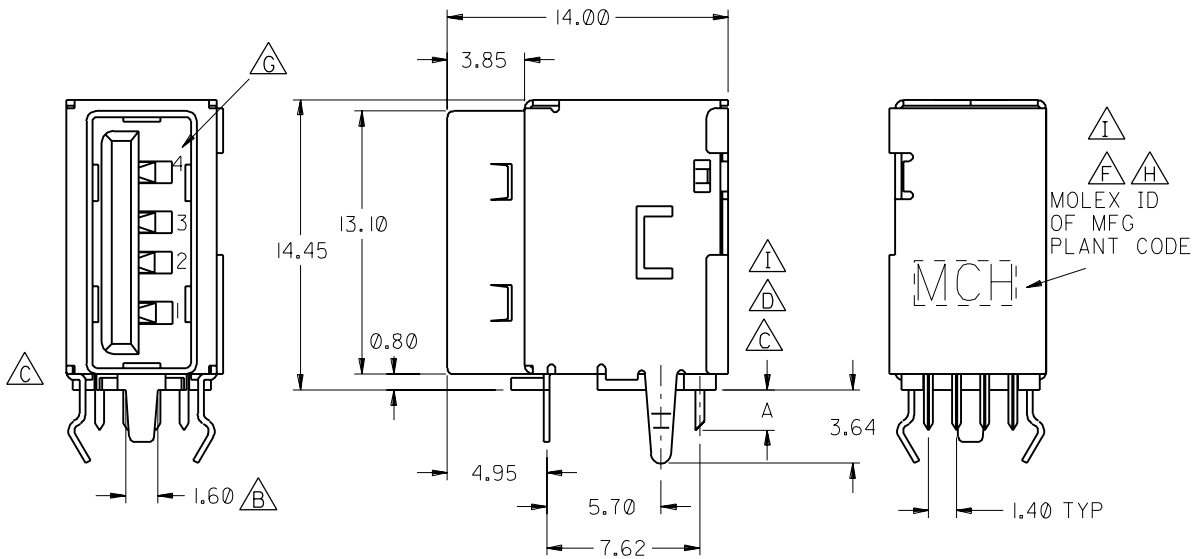
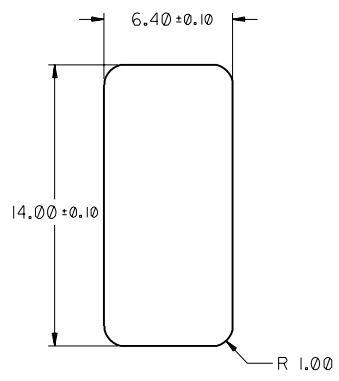
CAD FILE : S89485
 SIMILAR ITEM
 EDP NO.
 ENG. NO SDA-89485-000
 DO NOT SCALE DRAWING

- NOTES :
- MATERIAL :
 - HOUSING : HIGH TEMPERATURE NYLON , GLASS FIBRE FILLED, UL94-V0 , COLOR: BLACK
 - TERMINAL : PHOSPHOR BRONZE
 - METAL SHELL : DEEP DRAWN STEEL
 - PLATING :
 - TERMINAL :
 - CONTACT AREA : (a) GOLD FLASH.
 - (b) GOLD (Au), THICKNESS = 30 MICROINCH MINIMUM.
 - SOLDER TAIL : TIN-LEAD (Sn-Pb) ALLOY.
 - THICKNESS= 75 MICROINCH MINIMUM .
 - UNDER PLATE : NICKEL (Ni), THICKNESS= 50 MICROINCH MINIMUM.
 - METAL SHELL :
 - TIN (Sn) ALLOY , THICKNESS= 100 MICROINCH MINIMUM.
 - UNDER PLATE : NICKEL (Ni), THICKNESS= 50 MICROINCH MINIMUM.
 - RECOMMENDED PCB THICKNESS : 1.60±0.05 mm
 - PRODUCT SPECIFICATION : REFER TO PS-89485
 - TRAY PACKAGING SPECIFICATION REFER TO : PK-89485-002
 TUBE PACKAGING SPECIFICATION REFER TO : PK-89485-001
 TUBE PACKAGING P/N, PLEASE REFER TO SHEET 2,3

DIMENSION "A"	P/N FOR TRAY PACKING	
2.00 ^{+0.35} _{-0.15}	89485-0000	GOLD FLASH PLATING ON CONTACT AREA
	89485-0001	30 MICRO INCH GOLD PLATING ON CONTACT AREA
2.50 ^{+0.35} _{-0.10}	89485-0002	GOLD FLASH PLATING ON CONTACT AREA
	89485-0003	30 MICRO INCH GOLD PLATING ON CONTACT AREA



Recommended Panel Opening



L	ADD THE PK NUMBER	1200-0068	GRACE	010216	MATERIAL :	SEE NOTE	MOLEX TAIWAN LTD. SHEET 1 OF 3
K	Correct HSG Material	1200-003	Titan	000815	FINISH :	SEE NOTE	
J	Tooling Completed	100-0211	Vincent	000609	WIRE RANGE :	N/A	GENERAL TOLERANCES ANGLE : ± 3° DIM : ± .25/.010
I	Add Long Tail Option	100-020	Vincent	000328	INS. RANGE :	N/A	
H	CHANGE LOGO	100-0149	Vincent	000127	DRAWN BY 961007 R.YANG	CHK'D BY	ENG. NO.: SDA-89485-000• REV L
G	CHANGE CONTACT NUMBERS	199-045	Vincent	980819	APPR'D BY	SCALE 4:1	
F	PER ECN T99-022	199-022	Vincent	980730	TITLE :		SINGLE PORT UP-RIGHT USB CONNECTOR
E	Change Housing of Material	198-320	Vincent	980422			
D	RELEASE TO MANUFACTURE	198-279	Vincent	980313			
LTR	REVISION RECORD	ECN	DR	DATE			
REVISE ONLY ON CAD SYSTEM							