



Chipsmall Limited consists of a professional team with an average of over 10 year of expertise in the distribution of electronic components. Based in Hongkong, we have already established firm and mutual-benefit business relationships with customers from,Europe,America and south Asia,supplying obsolete and hard-to-find components to meet their specific needs.

With the principle of “Quality Parts,Customers Priority,Honest Operation,and Considerate Service”,our business mainly focus on the distribution of electronic components. Line cards we deal with include Microchip,ALPS,ROHM,Xilinx,Pulse,ON,Everlight and Freescale. Main products comprise IC,Modules,Potentiometer,IC Socket,Relay,Connector.Our parts cover such applications as commercial,industrial, and automotives areas.

We are looking forward to setting up business relationship with you and hope to provide you with the best service and solution. Let us make a better world for our industry!



Contact us

Tel: +86-755-8981 8866 Fax: +86-755-8427 6832

Email & Skype: info@chipsmall.com Web: www.chipsmall.com

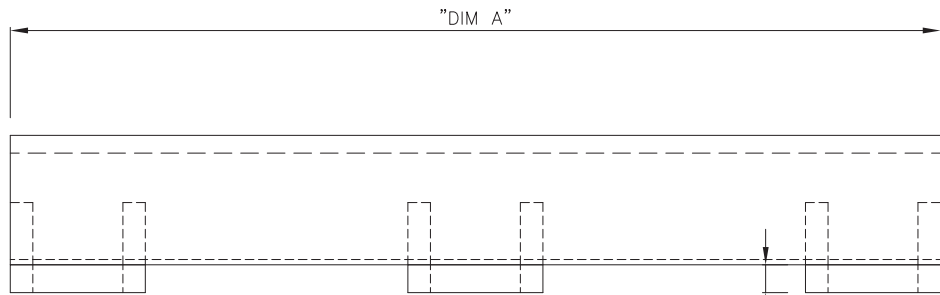
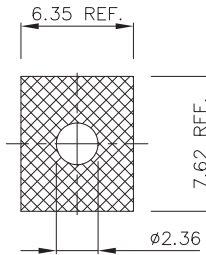
Address: A1208, Overseas Decoration Building, #122 Zhenhua RD., Futian, Shenzhen, China



PRODUCT NUMBER 89628-XXX

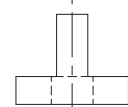
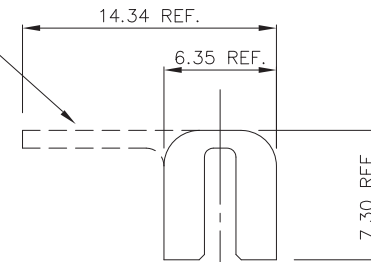
KEEP OUT AREA ON BOARD FOR STIFFENER/INSERT ATTACHMENT.

TAIL-PROTECT OPTION (SEE CHART ON PAGE 2)

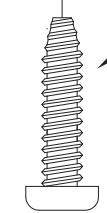


INSERTS SHOWN INSTALLED IN POSITION SEE NOTE BELOW

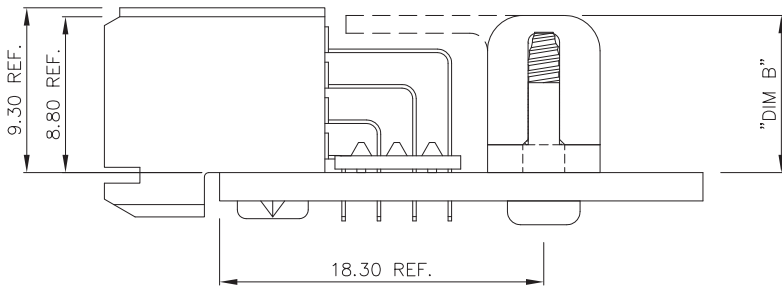
"DIM C" CLEARANCE FOR WASHOUT



TORX(tm) SELF-TAPPING SCREW. REQUIRES A #2 TORX(tm) DRIVER



NOTE: THIS PRODUCT COMES AS A KIT AND IS UNASSEMBLED. SEE CHART ON PAGE TWO FOR MORE INFORMATION.



mat'l. code		surface		tolerance		projection		product family	
-----		ISO 1302 ✓		ISO 406 ISO 1101		⊕		METRAL (tm)	
ltr	ecn	no	dr	date	tolerances unless otherwise specified		mm		title
K	v22878	SCS		10/21/92	angles	linear	xx ±.01/3		BOARD STIFFENER ASSEMBLY
L	v23674	SCS		12/15/92			xxx ±.005/.13		
M	v30017	SCS		1/12/93	σ±2'		xxxx ±.0020/.050		scale 1:1
N	v41850	SCS		12/01/94	dr	STU STONER	9/15/90		FCJ
P	v50964	SCS		7/31/95	enr	R. DOUTRICH	9/15/90		
R	v70347	MDF		3/04/97	chr	STU STONER	9/15/90		dwg no
S	M06-0286	MNR		7/27/06	app	STU STONER	9/15/90		89628
sheet	revisor	S	S						sheet 1 of 2
index	sheet	1	2						size A3
								type Product Customer Drawing	