



Chipsmall Limited consists of a professional team with an average of over 10 year of expertise in the distribution of electronic components. Based in Hongkong, we have already established firm and mutual-benefit business relationships with customers from,Europe,America and south Asia,supplying obsolete and hard-to-find components to meet their specific needs.

With the principle of “Quality Parts,Customers Priority,Honest Operation,and Considerate Service”,our business mainly focus on the distribution of electronic components. Line cards we deal with include Microchip,ALPS,ROHM,Xilinx,Pulse,ON,Everlight and Freescale. Main products comprise IC,Modules,Potentiometer,IC Socket,Relay,Connector.Our parts cover such applications as commercial,industrial, and automotives areas.

We are looking forward to setting up business relationship with you and hope to provide you with the best service and solution. Let us make a better world for our industry!



Contact us

Tel: +86-755-8981 8866 Fax: +86-755-8427 6832

Email & Skype: info@chipsmall.com Web: www.chipsmall.com

Address: A1208, Overseas Decoration Building, #122 Zhenhua RD., Futian, Shenzhen, China



Vises, Work Holding Tools

PanaPress. Mini Arbor Press

Mobile Electronics Mounts

InDash Custom Dash Mounts

iPod-iPhone Holders-Mounts

Smartphone Accessories

Smartphone Screen Protectors

CCTV, Security Camera Mounts

Audio/Video Mounts



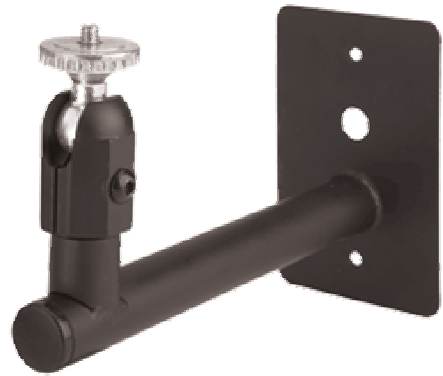
Click on any of the above images to
find out more about the products
pictured.

Model: 897 Standard J-Box Mount (Black)

OUR ORIGINAL J-BOX MOUNT!

Still one of the most popular mounts in our collection! A
workhorse mount ready to install when you are.

- Steel shaft is 0.875" (22.2mm) in diameter (hollow for lighter weight)
- 1/4-20 mounting stud with lockring
- Fully adjustable at the camera (210° Tilt, 360° Turn & 360° Rotation)
- Ball swivel is 6.25" (158.8mm) from wall
- Height of adjusting point is 3.5" (89mm)
- Integral J-Box mounting plate with 0.625" (15.9mm) cable pass thru hole
- Knob and tamper-resistant set-screw adjusting options included



Quantity