



Chipsmall Limited consists of a professional team with an average of over 10 year of expertise in the distribution of electronic components. Based in Hongkong, we have already established firm and mutual-benefit business relationships with customers from,Europe,America and south Asia,supplying obsolete and hard-to-find components to meet their specific needs.

With the principle of “Quality Parts,Customers Priority,Honest Operation,and Considerate Service”,our business mainly focus on the distribution of electronic components. Line cards we deal with include Microchip,ALPS,ROHM,Xilinx,Pulse,ON,Everlight and Freescale. Main products comprise IC,Modules,Potentiometer,IC Socket,Relay,Connector.Our parts cover such applications as commercial,industrial, and automotives areas.

We are looking forward to setting up business relationship with you and hope to provide you with the best service and solution. Let us make a better world for our industry!



## Contact us

Tel: +86-755-8981 8866 Fax: +86-755-8427 6832

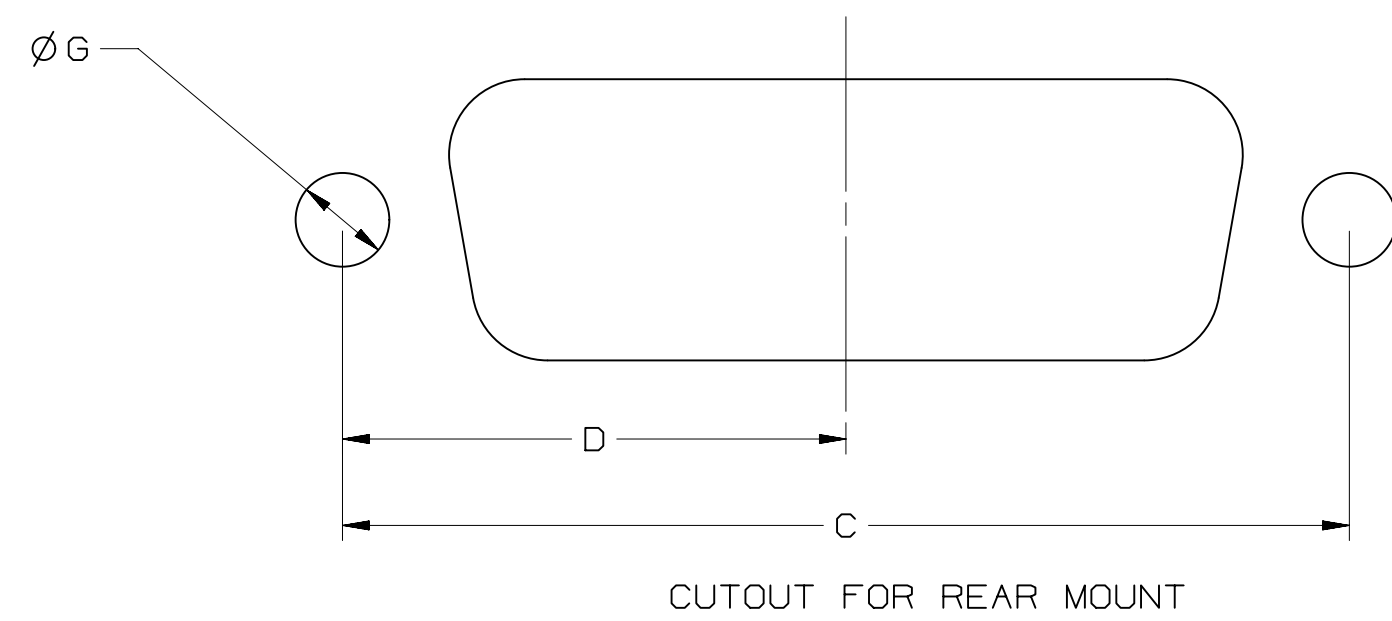
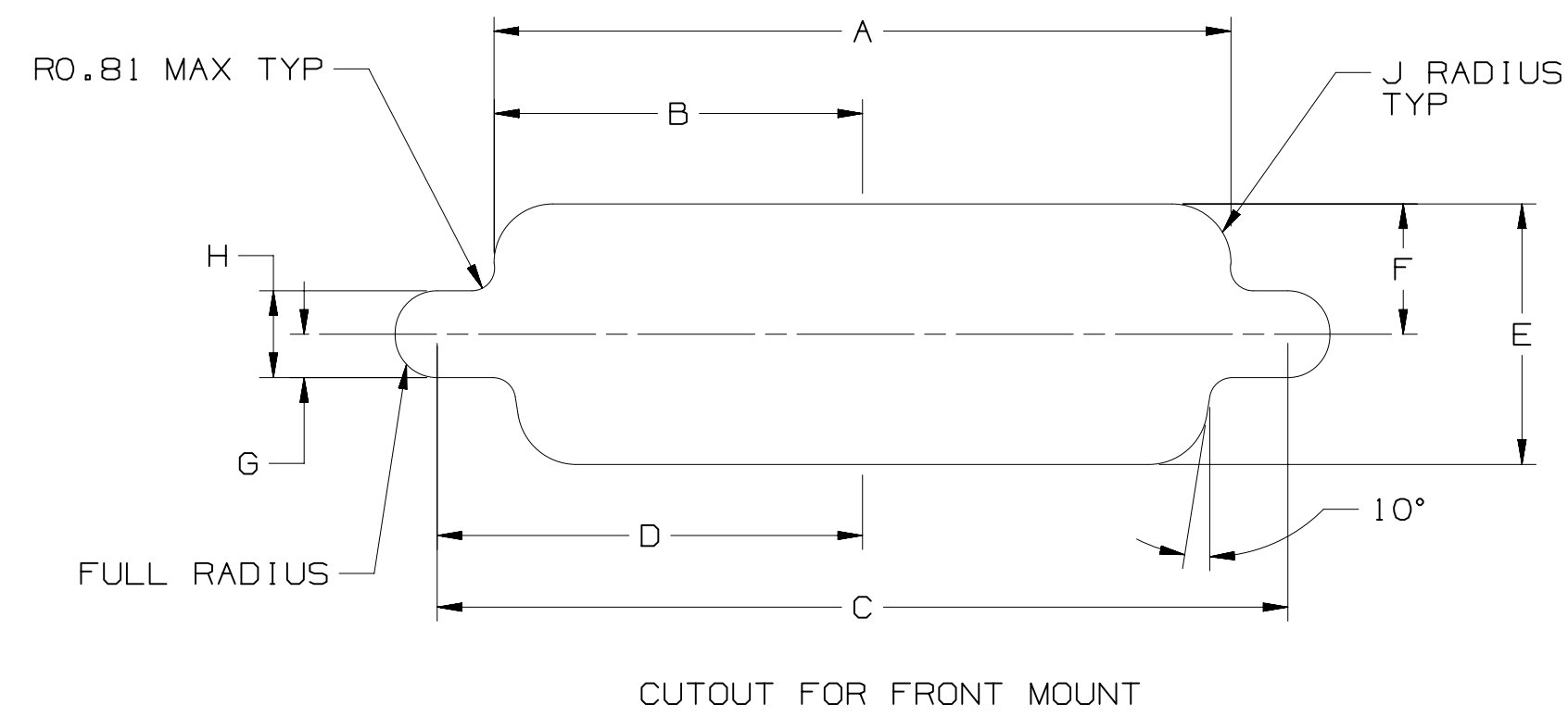
Email & Skype: info@chipsmall.com Web: www.chipsmall.com

Address: A1208, Overseas Decoration Building, #122 Zhenhua RD., Futian, Shenzhen, China





POSITION	MOUNTING METHOD	A	B	C	D	E	F	G	H	J
9	FRONT	.874( 22.2 )	.437( 11.1 )	.984( 25.0 )	.492( 12.5 )	.513( 13.0 )	.257( 6.5 )	.120( 3.1 )	.060( 1.5 )	.083( 2.1 )
	REAR	.806( 20.5 )	.403( 10.2 )	.984( 25.0 )	.492( 12.5 )	.449( 11.4 )	.225( 5.7 )	.120( 3.1 )	.060( 1.5 )	.132( 3.4 )
15	FRONT	1.202( 30.5 )	.601( 15.3 )	1.312( 33.3 )	.656( 16.7 )	.513( 13.0 )	.257( 6.5 )	.120( 3.1 )	.060( 1.5 )	.083( 2.1 )
	REAR	1.134( 28.8 )	.567( 14.4 )	1.312( 33.3 )	.656( 16.7 )	.449( 11.4 )	.225( 5.7 )	.120( 3.1 )	.060( 1.5 )	.132( 3.4 )
25	FRONT	1.743( 44.3 )	.872( 22.2 )	1.852( 47.0 )	.926( 23.5 )	.513( 13.0 )	.257( 6.5 )	.120( 3.1 )	.060( 1.5 )	.083( 2.1 )
	REAR	1.674( 42.5 )	.837( 21.3 )	1.852( 47.0 )	.926( 23.5 )	.449( 11.4 )	.225( 5.7 )	.120( 3.1 )	.060( 1.5 )	.132( 3.4 )
37	FRONT	2.391( 60.7 )	1.196( 30.4 )	2.500( 63.5 )	1.250( 31.8 )	.513( 13.0 )	.257( 6.5 )	.120( 3.1 )	.060( 1.5 )	.083( 2.1 )
	REAR	2.326( 59.1 )	1.163( 29.5 )	2.500( 63.5 )	1.250( 31.8 )	.449( 11.4 )	.225( 5.7 )	.120( 3.1 )	.060( 1.5 )	.132( 3.4 )
50	FRONT	2.297( 58.3 )	1.149( 29.2 )	2.406( 61.1 )	1.203( 30.6 )	.623( 15.8 )	.312( 7.9 )	.120( 3.1 )	.060( 1.5 )	.083( 2.1 )
	REAR	2.218( 56.3 )	1.109( 28.2 )	2.406( 61.1 )	1.203( 30.6 )	.555( 14.1 )	.278( 7.1 )	.120( 3.1 )	.060( 1.5 )	.132( 3.4 )



C	46292	MAR 28, 2013	SJS	ARM
B	35416	AUG 29, 2011	SJS	ARM
A	34511	MAY 17, 2011	SJS	ARM

DESIGN REFERENCE	NEXT ASSEMBLY	REV	ECO	ISSUE DATE AND DESCRIPTION	DRFT	CHKD
		SJS		MAY 17, 2011		
		ARM		MAY 17, 2011		
DIVISION	DIVISION CODE	© 3M COPYR[IGHT] 2013 This document and the information it contains are 3M property and may not be reproduced or further distributed without 3M permission, or used or disclosed other than for 3M authorized purposes. All rights reserved.				
DO NOT SCALE DRAWING	SCALE 1/1	<b>3M</b> St. Paul, MN 55144				
THIRD ANGLE PROJECTION	TOLERANCES EXCEPT AS NOTED	TITILE <b>8PXX-X00X D-SUB SOLDER CUP PLUG TS-2357</b>				
INTERPRET PER ASME Y14.5 - 1994	INCHES	CAGE NUMBER <b>D78-5100-2357-1</b>				
MAX SURFACE ROUGHNESS	MILLIMETERS	DRAWING NO. <b>78-5100-2357-1</b>				
125	0 ± .1	REV. <b>C</b>				
<input type="checkbox"/> ALL SURFACES	.00 ± .05	MODEL <b>BP</b>				
<input checked="" type="checkbox"/> MARKED ONLY	.000 ± .005	DET. <input type="checkbox"/> YES <input checked="" type="checkbox"/> NO SHT 2 OF 2				
	ANGLES ± 1°					

78-5100-2357-1  
DRAWING NUMBER