



Chipsmall Limited consists of a professional team with an average of over 10 year of expertise in the distribution of electronic components. Based in Hongkong, we have already established firm and mutual-benefit business relationships with customers from,Europe,America and south Asia,supplying obsolete and hard-to-find components to meet their specific needs.

With the principle of "Quality Parts,Customers Priority,Honest Operation,and Considerate Service",our business mainly focus on the distribution of electronic components. Line cards we deal with include Microchip,ALPS,ROHM,Xilinx,Pulse,ON,Everlight and Freescale. Main products comprise IC,Modules,Potentiometer,IC Socket,Relay,Connector.Our parts cover such applications as commercial,industrial, and automotives areas.

We are looking forward to setting up business relationship with you and hope to provide you with the best service and solution. Let us make a better world for our industry!



## Contact us

Tel: +86-755-8981 8866 Fax: +86-755-8427 6832

Email & Skype: info@chipsmall.com Web: www.chipsmall.com

Address: A1208, Overseas Decoration Building, #122 Zhenhua RD., Futian, Shenzhen, China



THIS DRAWING IS UNPUBLISHED.

RELEASED FOR PUBLICATION

---

© COPYRIGHT - By -

ALL RIGHTS RESERVED.

LOC  
FT

DIST  
0

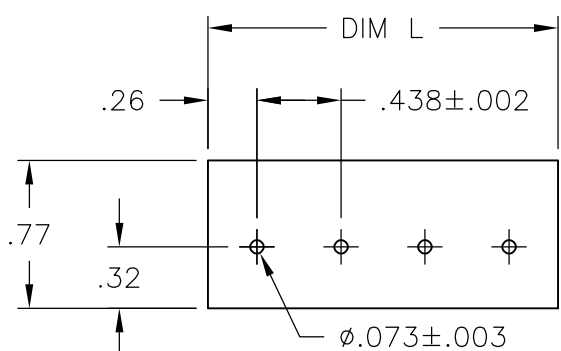
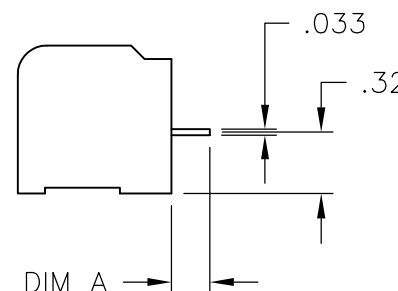
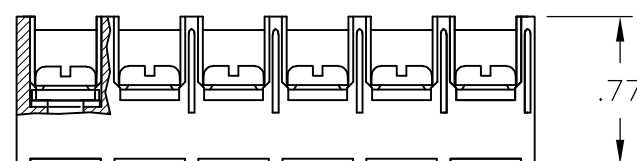
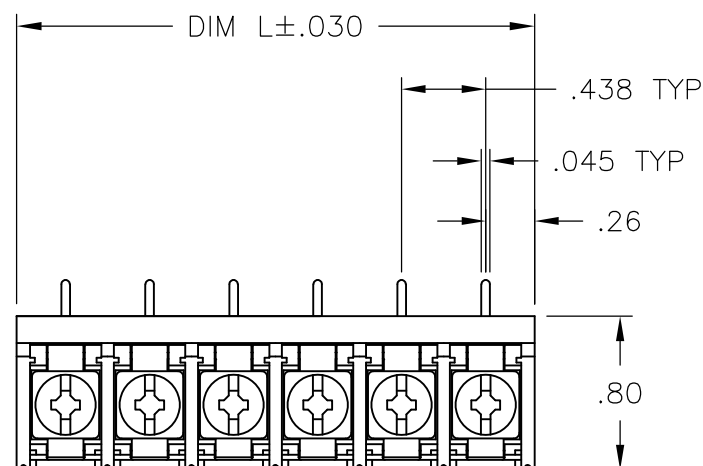
REVISIONS

P	LTR	DESCRIPTION	DATE	DWN	APVD
D1		REVISED PER ECO-12-009693	23MAY12	KH	MS

MATERIALS:  
 HOUSING: THERMOPLASTIC, UL94V-0, BLACK.  
 TERMINAL: BRIGHT TIN PLATED COPPER ALLOY.  
 SCREWS: 8-32, ZINC PLATED STEEL.

ELECTRICAL:  
 CURRENT RATING: 30A  
 VOLTAGE RATING: 600V  
 WIRE RANGE: 10-18 AWG (UL)  
 10-22 AWG (CSA)

MECHANICAL:  
 RECOMMENDED TORQUE: 20 IN-LB.  
 OPERATING TEMP.: -40°C TO +120°C.



RECOMMENDED PCB LAYOUT

.126	4.010	9	8PCR-09-006A	2-1546566-1
.200	8.823	20	8PCR-20-006	2-1546566-0
.200	8.385	19	8PCR-19-006	1-1546566-9
.200	7.948	18	8PCR-18-006	1-1546566-8
.200	7.510	17	8PCR-17-006	1-1546566-7
.200	7.073	16	8PCR-16-006	1-1546566-6
.200	6.635	15	8PCR-15-006	1-1546566-5
.200	6.198	14	8PCR-14-006	796875-3
.200	5.760	13	8PCR-13-006	1-1546566-3
.200	5.323	12	8PCR-12-006	1-1546566-2
.200	4.885	11	8PCR-11-006	796875-1
.200	4.448	10	8PCR-10-006	5-1546159-4
.200	4.010	9	8PCR-09-006	1546566-9
.200	3.573	8	8PCR-08-006	4-1437657-3
.200	3.135	7	8PCR-07-006	5-1546159-2
.200	2.698	6	8PCR-06-006	3-1437657-7
.200	2.260	5	8PCR-05-006	3-1437657-3
.200	1.823	4	8PCR-04-006	3-1437657-1
.200	1.385	3	8PCR-03-006	2-1437657-8
.200	.948	2	8PCR-02-006	2-1437657-2
DIM A +.020/-0.010	DIM L	NO OF POS	TE NUMBER	TE NUMBER

THIS DRAWING IS A CONTROLLED DOCUMENT.		DWN S SCHLEGEL 10/25/06	<b>TE Connectivity</b>				
DIMENSIONS: INCHES		CHK S. YODER 10/25/06					
TOLERANCES UNLESS OTHERWISE SPECIFIED:		APVD S. YODER 10/25/06	NAME				
0 PLC ± - 1 PLC ± - 2 PLC ± .01 3 PLC ± .005 4 PLC ± - ANGLES ± 1°		PRODUCT SPEC -	8PCR-XX-006 ASSEMBLY				
MATERIAL -		FINISH -	APPLICATION SPEC -	SIZE A3	CAGE CODE 00779	DRAWING NO C-2-1437657-2	RESTRICTED TO -
CUSTOMER DRAWING			WEIGHT -	SCALE 1:1	SHEET 1 OF 1	REV D1	