



Chipsmall Limited consists of a professional team with an average of over 10 year of expertise in the distribution of electronic components. Based in Hongkong, we have already established firm and mutual-benefit business relationships with customers from,Europe,America and south Asia,supplying obsolete and hard-to-find components to meet their specific needs.

With the principle of “Quality Parts,Customers Priority,Honest Operation,and Considerate Service”,our business mainly focus on the distribution of electronic components. Line cards we deal with include Microchip,ALPS,ROHM,Xilinx,Pulse,ON,Everlight and Freescale. Main products comprise IC,Modules,Potentiometer,IC Socket,Relay,Connector.Our parts cover such applications as commercial,industrial, and automotives areas.

We are looking forward to setting up business relationship with you and hope to provide you with the best service and solution. Let us make a better world for our industry!



Contact us

Tel: +86-755-8981 8866 Fax: +86-755-8427 6832

Email & Skype: info@chipsmall.com Web: www.chipsmall.com

Address: A1208, Overseas Decoration Building, #122 Zhenhua RD., Futian, Shenzhen, China



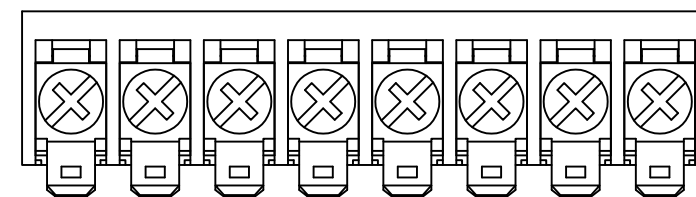
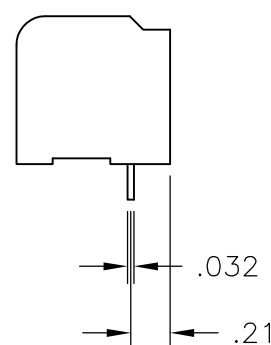
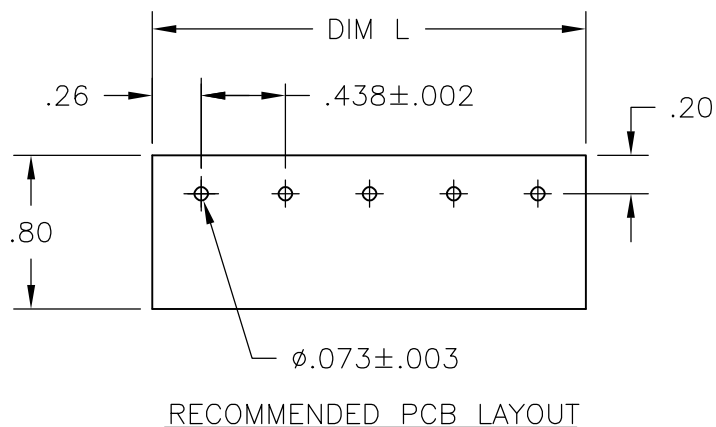
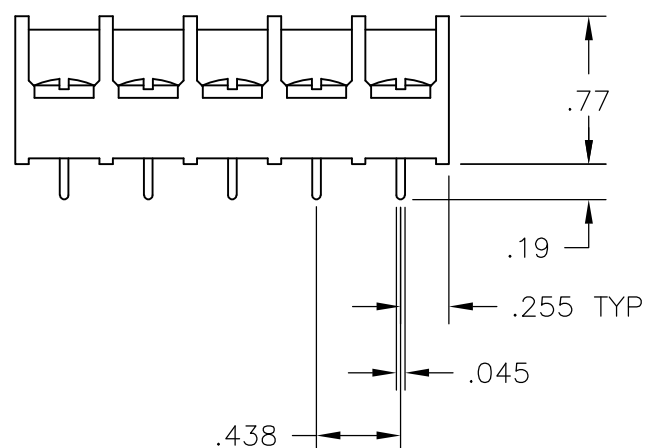
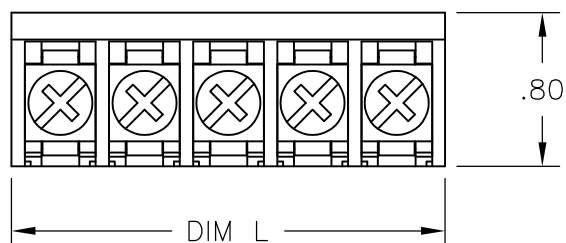
THIS DRAWING IS UNPUBLISHED. RELEASED FOR PUBLICATION
 © COPYRIGHT BY TYCO ELECTRONICS CORPORATION. ALL INTERNATIONAL RIGHTS RESERVED.

LOC	DIST	REVISIONS			
P	LTR	DESCRIPTION	DATE	DWN	APVD
	F	REVISED PER ECO-09-019330	31AUG09	HMR	CR

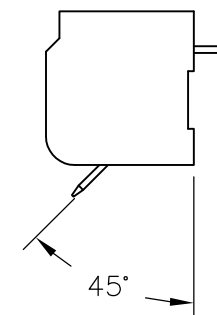
MATERIALS:
 HOUSING: THERMOPLASTIC, UL94V-0, BLACK.
 TERMINAL: BRIGHT TIN PLATED COPPER ALLOY.
 SCREWS: 8-32, ZINC PLATED STEEL.

ELECTRICAL:
 CURRENT RATING: 30A.
 VOLTAGE RATING: 600V.
 WIRE RANGE: 10-18 AWG (UL)
 10-22 AWG (CSA)

MECHANICAL:
 RECOMMENDED TORQUE: 20 IN-LB.
 OPERATING TEMP.: -40°C TO +120°C.

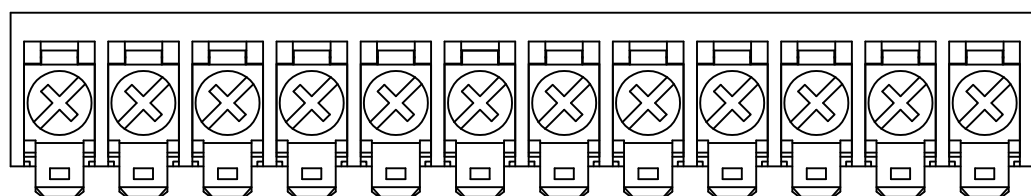


1-1437658-9

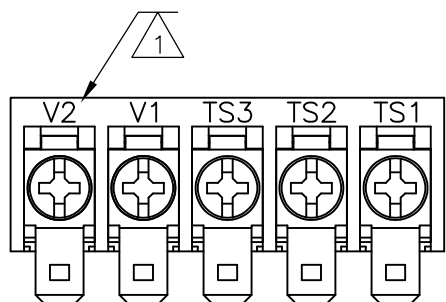
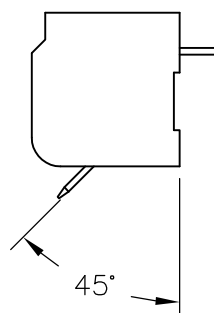


- 1 MARKED WITH WHITE INK.
- 2 OBSOLETE PART NUMBER.
- 3 SCREWS TO BE BOTTOMED

COMMENTS	DIM L REF	NO OF POS	CATALOG NUMBER	TE PART NO
2	9.260	21	8PCV-21-007	8-1546159-4
-	8.823	20	8PCV-20-007	7-1437658-7
-	8.385	19	8PCV-19-007	1546565-8
-	7.948	18	8PCV-18-007	1546565-7
-	7.510	17	8PCV-17-007	1546565-6
-	7.073	16	8PCV-16-007	1546565-5
-	6.635	15	8PCV-15-007	1546565-4
-	6.198	14	8PCV-14-007	7-1546159-9
-	5.760	13	8PCV-13-007	5-1437658-6
SEE FIGURE	5.323	12	8PCV-12-001-010	1-1546098-2
-	5.323	12	8PCV-12-007	4-1437658-7
-	4.885	11	8PCV-11-007	4-1437658-1
-	4.448	10	8PCV-10-007	7-1546159-2
-	4.010	9	8PCV-09-007	1546565-3
2	3.573	8	8PCV-08-001-010	1-1437658-9
-	3.573	8	8PCV-08-007	2-1437658-3
-	3.135	7	8PCV-07-007	1546565-2
-	2.698	6	8PCV-06-007	1437658-1
SEE FIGURE	2.260	5	8PCV-05-501	9-1437657-3
-	2.260	5	8PCV-05-007	9-1437657-0
-	1.823	4	8PCV-04-007	1546565-1
-	1.385	4	8PCV-04-003	1546119-3
-	1.385	3	8PCV-03-007	7-1437657-0
-	.948	2	8PCV-02-007	5-1546159-6



1-1437660-5



9-1437657-3

THIS DRAWING IS A CONTROLLED DOCUMENT.

DWN	S SCHLEGEL	2/25/03	Tyco Electronics Corporation Harrisburg, PA 17105-3608			
CHK	S YODER	10/8/04				
APVD	S YODER	10/8/04	NAME			
PRODUCT SPEC			8PCV-XX-007 ASSEMBLY			
APPLICATION SPEC						
DIMENSIONS: INCHES		TOLERANCES UNLESS OTHERWISE SPECIFIED:	SIZE	CAGE CODE	DRAWING NO	RESTRICTED TO
		0 PLC ± - 1 PLC ± - 2 PLC ± - 3 PLC ± - 4 PLC ± - ANGLES ± -	A3	00779	G-7-1437657-0	-
MATERIAL		FINISH	CUSTOMER DRAWING		SCALE	SHEET
-		-	-		1:1	1 OF 1
					REV	F