



Chipsmall Limited consists of a professional team with an average of over 10 year of expertise in the distribution of electronic components. Based in Hongkong, we have already established firm and mutual-benefit business relationships with customers from,Europe,America and south Asia,supplying obsolete and hard-to-find components to meet their specific needs.

With the principle of “Quality Parts,Customers Priority,Honest Operation,and Considerate Service”,our business mainly focus on the distribution of electronic components. Line cards we deal with include Microchip,ALPS,ROHM,Xilinx,Pulse,ON,Everlight and Freescale. Main products comprise IC,Modules,Potentiometer,IC Socket,Relay,Connector.Our parts cover such applications as commercial,industrial, and automotives areas.

We are looking forward to setting up business relationship with you and hope to provide you with the best service and solution. Let us make a better world for our industry!



## Contact us

Tel: +86-755-8981 8866 Fax: +86-755-8427 6832

Email & Skype: info@chipsmall.com Web: www.chipsmall.com

Address: A1208, Overseas Decoration Building, #122 Zhenhua RD., Futian, Shenzhen, China



THIS DRAWING IS UNPUBLISHED. RELEASED FOR PUBLICATION  
 © COPYRIGHT BY TYCO ELECTRONICS CORPORATION. ALL RIGHTS RESERVED.

LOC	DIST	REVISIONS					
FT	0	P	LTR	DESCRIPTION	DATE	DWN	APVD
			F	REVISED PER ECO-10-004812	05MAY10	HMR	CR

**MATERIAL:**  
 HOUSING: THERMOPLASTIC, UL94V-0, BLACK.  
 TERMINAL: BRIGHT TIN PLATED COPPER ALLOY.  
 SCREW: 8-32, ZINC PLATED STEEL.

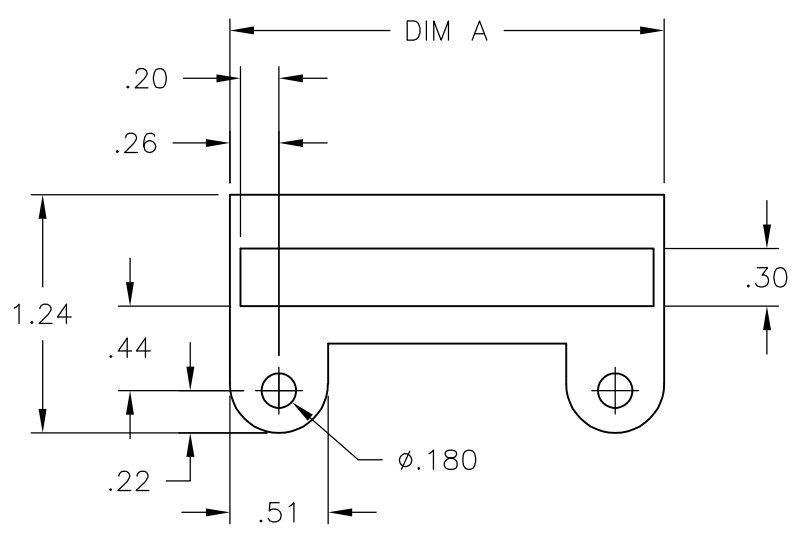
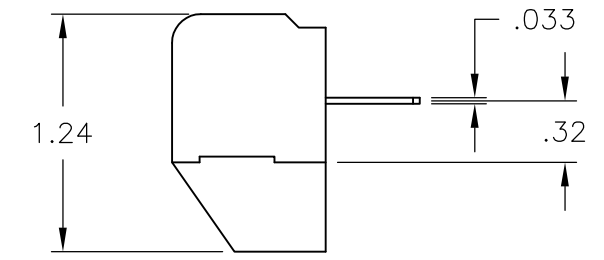
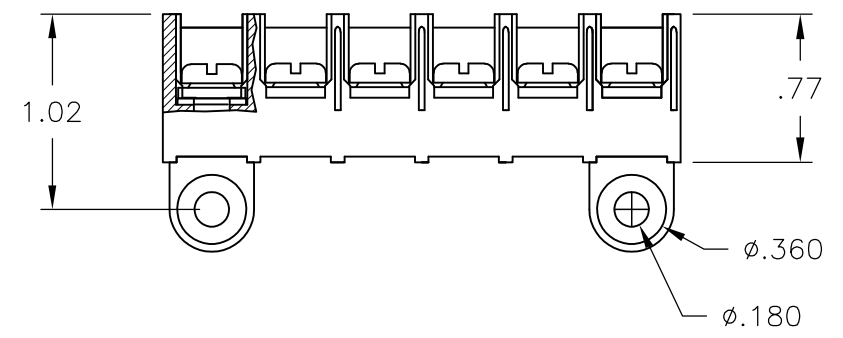
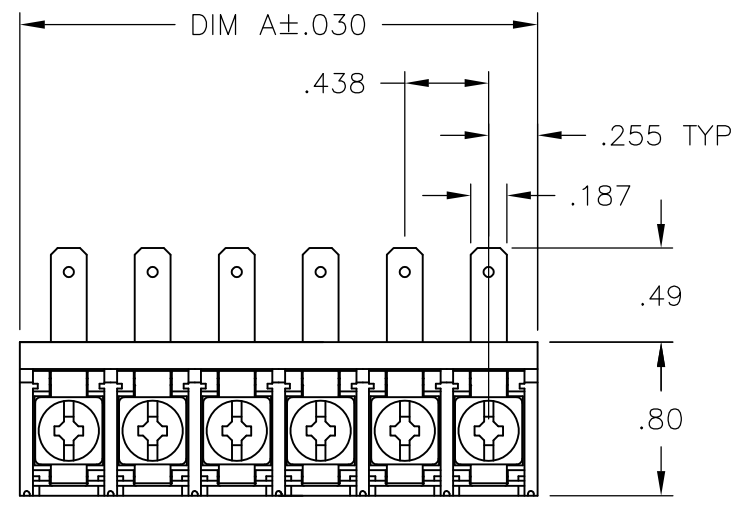
**ELECTRICAL:**  
 CURRENT RATING: 30A  
 VOLTAGE RATING: 600V  
 WIRE RANGE: 10-18 AWG (UL)  
 10-22 AWG (CSA)

**MECHANICAL:**  
 RECOMMENDED TORQUE: 20 IN-LB.  
 OPERATING TEMP.: -40°C TO +120°C.

1 INK MARKED APPROX AS SHOWN.

3 OBSOLETE PART NUMBER.

4 OBSOLETE PARTS: OBSOLETE CIS STREAMLINING PER D.RENAUD/D.SINISI



RECOMMENDED PANEL LAYOUT

8.823	20	8QCR-20-006	2-1546587-0
8.385	19	8QCR-19-006	1-1546587-9
7.948	18	8QCR-18-006	1-1546587-8
7.510	17	8QCR-17-006	1-1546587-7
7.073	16	8QCR-16-006	1-1546587-6
6.635	15	8QCR-15-006	1-1546587-5
6.198	14	8QCR-14-006	1-1546587-4
5.760	13	8QCR-13-006	1-1546587-3
5.323	12	8QCR-12-006	1-1546587-2
4.885	11	8QCR-11-006	1-1546587-1
4.448	10	8QCR-10-006	1-1546587-0
4.010	9	8QCR-09-006	1546587-9
3.573	8	8QCR-08-006	1546587-8
3.135	7	8QCR-07-006	1546587-7
2.698	6	8QCR-06-006	1437659-6
2.260	5	8QCR-05-006	9-1546159-2
1.823	4	8QCR-04-661	2-1546587-4
1.823	4	8QCR-04-527	9-1546159-1
1.823	4	8QCR-04-006	9-1437658-5
1.385	3	8QCR-03-006	8-1546159-9
2.260	2	8QCR-02-302	8-1546159-8
.948	2	8QCR-02-006	1546587-2
DIM A	NO OF POS	CATALOG NUMBER	TE PART NO

SEE FIGURE 4 OBSOLETE  
 SEE FIGURE 3  
 SEE FIGURE 4 OBSOLETE

THIS DRAWING IS A CONTROLLED DOCUMENT.		DWN S SCHLEGEL 6/25/04	Tyco Electronics Corporation Harrisburg, Pa 17105-3608	
DIMENSIONS: INCHES		CHK S YODER 6/25/04		
TOLERANCES UNLESS OTHERWISE SPECIFIED:		APVD S YODER 6/25/04	NAME	
0 PLC ± -		PRODUCT SPEC		
1 PLC ± -		APPLICATION SPEC		
2 PLC ± .02		SIZE CAGE CODE DRAWING NO RESTRICTED TO		
3 PLC ± .010		A3 00779 C-1437659-6		
4 PLC ± -		SCALE NTS SHEET 1 OF 2 REV F		
ANGLES ± -		CUSTOMER DRAWING		
FINISH				

4

3

2

1

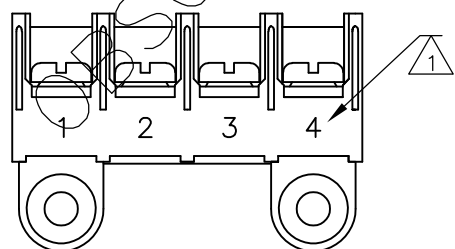
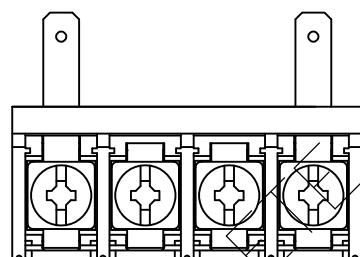
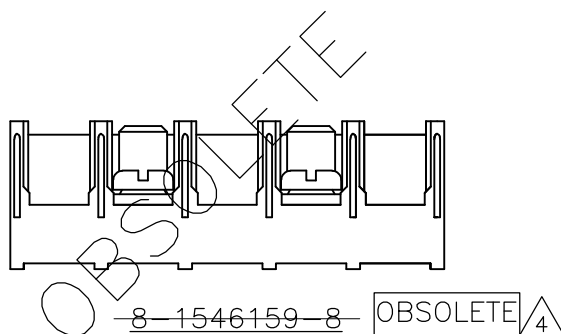
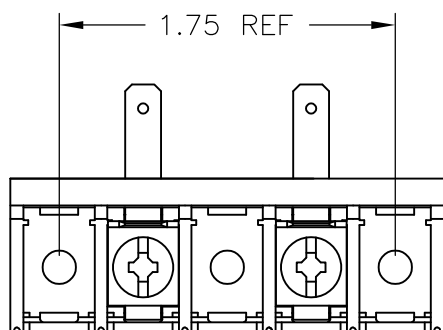
THIS DRAWING IS UNPUBLISHED. RELEASED FOR PUBLICATION

© COPYRIGHT BY TYCO ELECTRONICS CORPORATION. ALL RIGHTS RESERVED.

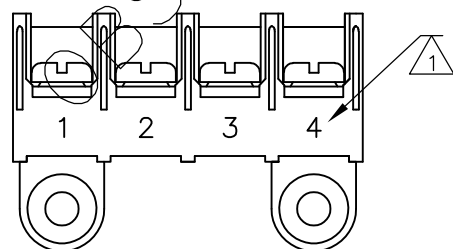
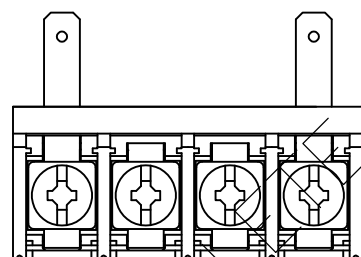
LOC FT DIST 0

REVISIONS

P	LTR	DESCRIPTION	DATE	DWN	APVD
-	-	SEE SHEET 1	-	-	-



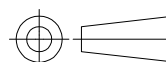
9-1546159-1



2-1546587-1 OBSOLETE

THIS DRAWING IS A CONTROLLED DOCUMENT.

DIMENSIONS:  
INCHES



TOLERANCES UNLESS OTHERWISE SPECIFIED:

0 PLC	± -
1 PLC	± -
2 PLC	± .02
3 PLC	± .010
4 PLC	± -
ANGLES	± -

MATERIAL

FINISH

DWN	S SCHLEGEL	6/25/04
CHK	S YODER	6/25/04
APVD	S YODER	6/25/04



Tyco Electronics Corporation  
Harrisburg, Pa 17105-3608

PRODUCT SPEC

APPLICATION SPEC

WEIGHT

NAME

8QCR-XX-006 ASSEMBLY

SIZE	CAGE CODE	DRAWING NO	RESTRICTED TO
A3	00779	C-1437659-6	-

CUSTOMER DRAWING

SCALE	SHEET	OF	REV
NTS	2	2	F