



Chipsmall Limited consists of a professional team with an average of over 10 year of expertise in the distribution of electronic components. Based in Hongkong, we have already established firm and mutual-benefit business relationships with customers from,Europe,America and south Asia,supplying obsolete and hard-to-find components to meet their specific needs.

With the principle of "Quality Parts,Customers Priority,Honest Operation,and Considerate Service",our business mainly focus on the distribution of electronic components. Line cards we deal with include Microchip,ALPS,ROHM,Xilinx,Pulse,ON,Everlight and Freescale. Main products comprise IC,Modules,Potentiometer,IC Socket,Relay,Connector.Our parts cover such applications as commercial,industrial, and automotives areas.

We are looking forward to setting up business relationship with you and hope to provide you with the best service and solution. Let us make a better world for our industry!



Contact us

Tel: +86-755-8981 8866 Fax: +86-755-8427 6832

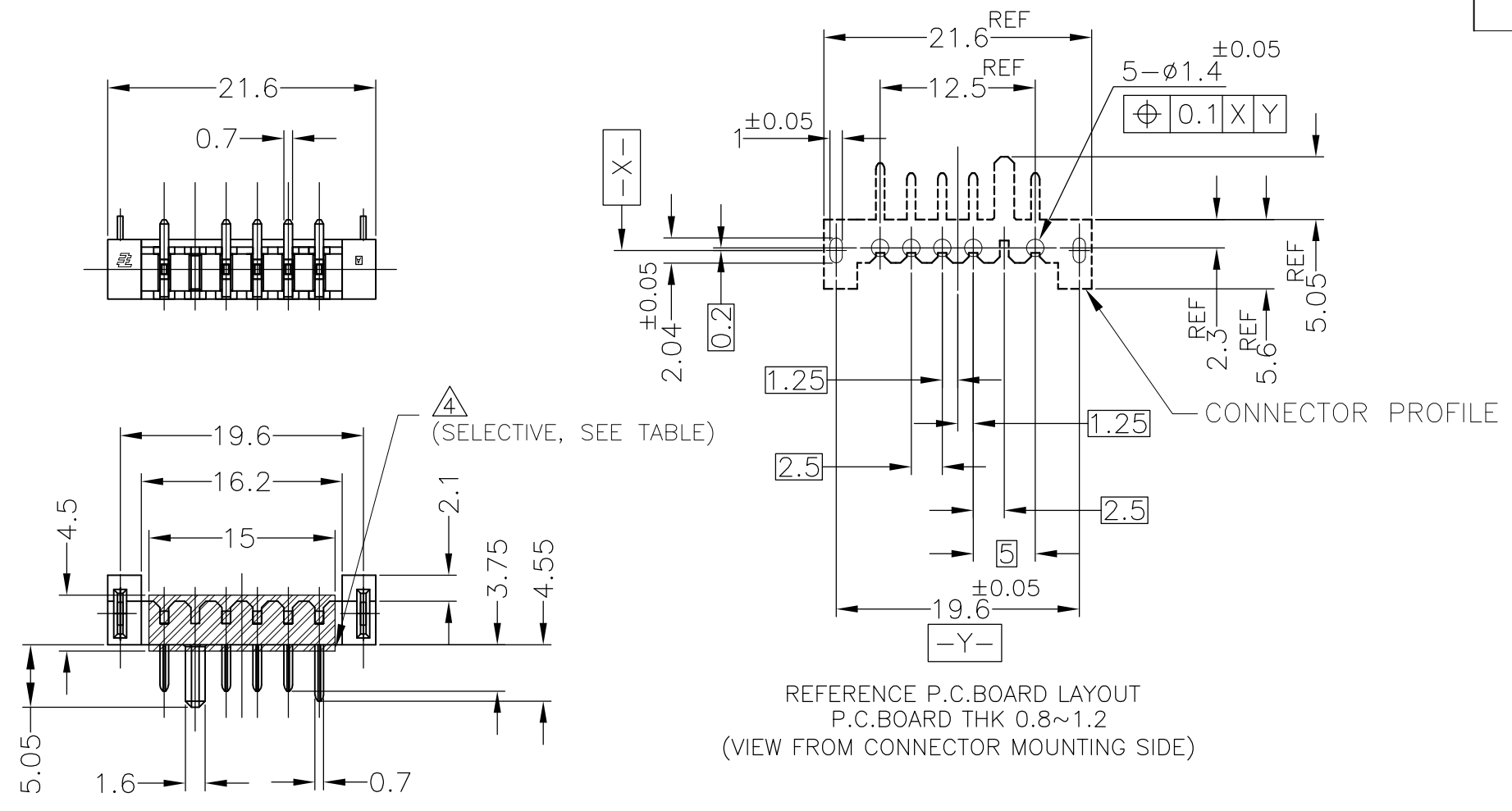
Email & Skype: info@chipsmall.com Web: www.chipsmall.com

Address: A1208, Overseas Decoration Building, #122 Zhenhua RD., Futian, Shenzhen, China

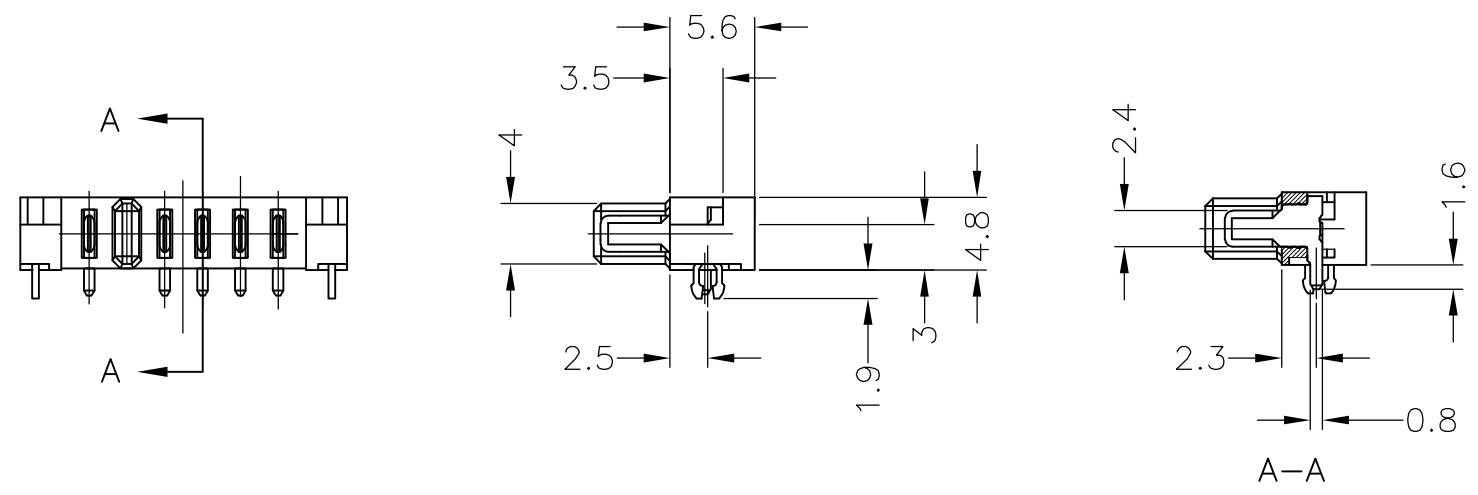


THIS DRAWING IS UNPUBLISHED. RELEASED FOR PUBLICATION JUL ,2002.
 © COPYRIGHT 2002 BY TYCO ELECTRONICS CORPORATION. ALL RIGHTS RESERVED.

LOC		DIST		REVISIONS			
ES		P	LTR	DESCRIPTION	DATE	DWN	APVD
			E	REVISED PER ECR-13-000366	10JAN2013	E.L	S.Y



- ① MATERIAL HOUSING : THERMOPLASTIC RESIN, UL94V-0
COLOR ; BLACK
CONTACT : COPPER ALLOY
RETENTION LEG : COPPER ALLOY
- ② FINISH CONTACT : Ni ALL OVER UNDER PL.
GOLD PL. AT CONTACT AREA
TIN-LEAD PL. AT LEAD AREA
RETENTION LEG : Ni ALL OVER UNDER PL.
TIN-LEAD PL.
- ③ FINISH CONTACT : Ni ALL OVER UNDER PL.
GOLD PL. AT CONTACT AREA
GOLD FLASH PL. AT LEAD AREA
RETENTION LEG : Ni ALL OVER UNDER PL.
TIN PL.
- ④ POLYIMIDE FILM: JUST FOR CHIP MOUNTER WORK



W/ POLYIMIDE FILM	③	9-1612503-2
W/O POLYIMIDE FILM	③	9-1612503-1
W/O POLYIMIDE FILM	②	1612503-1
OBSOLETE		
REMARK	FINISH	PART NO.

THIS DRAWING IS A CONTROLLED DOCUMENT.		DWN T.KATANO 22JUL02	Tyco Electronics Corporation Shanghai PRC	
DIMENSIONS: mm		CHK K.IKEGAMI 22JUL02	NAME PLUG ASSEMBLY 2.5mm PITCH BATTERY CONNECTOR 5POS.	
TOLERANCES UNLESS OTHERWISE SPECIFIED: 0-PLC \pm 0.3 1-PLC \pm 0.3 2-PLC \pm 0.3 3-PLC \pm 0.3 4-PLC \pm 0.3 ANGLES \pm 3'		APVD K.KODAIRA 22JUL02	PRODUCT SPEC 108-5783	
MATERIAL ①		FINISH SEE TABLE	APPLICATION SPEC 108-5783	RESTRICTED TO
		WEIGHT	SIZE A3	CAGE CODE 00779
		CUSTOMER DRAWING	DRAWING NO G-1612503	SCALE 4:1
			SHEET 1 OF 1	REV E