



Chipsmall Limited consists of a professional team with an average of over 10 year of expertise in the distribution of electronic components. Based in Hongkong, we have already established firm and mutual-benefit business relationships with customers from,Europe,America and south Asia,supplying obsolete and hard-to-find components to meet their specific needs.

With the principle of “Quality Parts,Customers Priority,Honest Operation,and Considerate Service”,our business mainly focus on the distribution of electronic components. Line cards we deal with include Microchip,ALPS,ROHM,Xilinx,Pulse,ON,Everlight and Freescale. Main products comprise IC,Modules,Potentiometer,IC Socket,Relay,Connector.Our parts cover such applications as commercial,industrial, and automotives areas.

We are looking forward to setting up business relationship with you and hope to provide you with the best service and solution. Let us make a better world for our industry!



Contact us

Tel: +86-755-8981 8866 Fax: +86-755-8427 6832

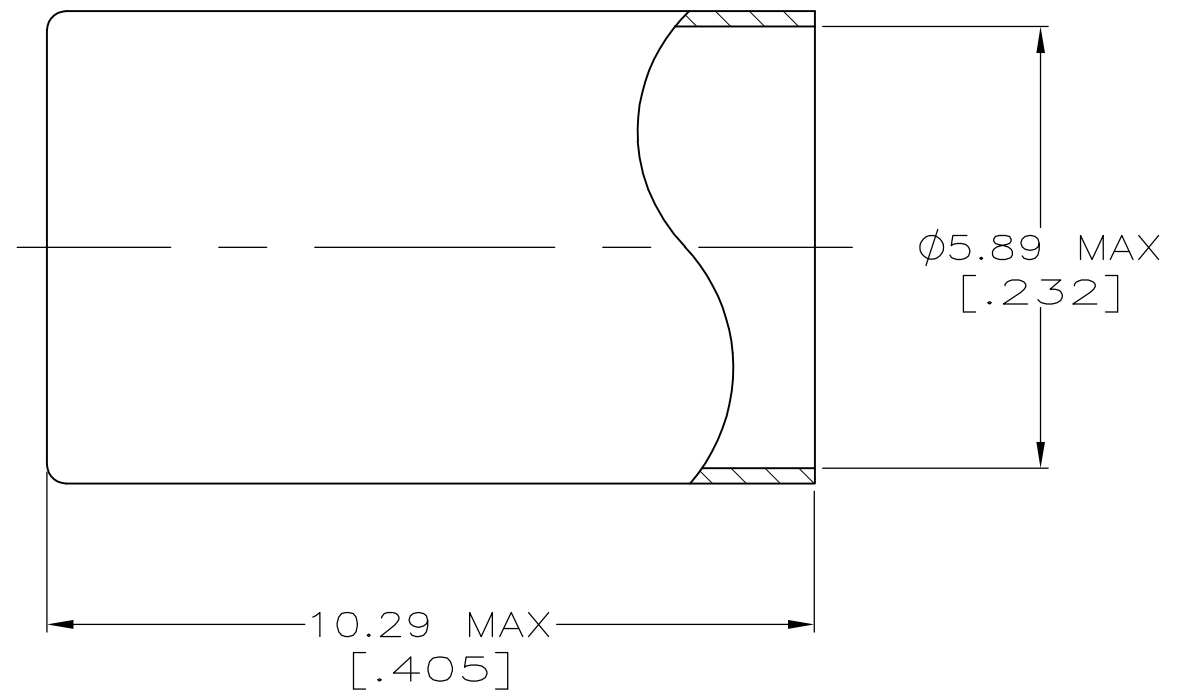
Email & Skype: info@chipsmall.com Web: www.chipsmall.com

Address: A1208, Overseas Decoration Building, #122 Zhenhua RD., Futian, Shenzhen, China



THIS DRAWING IS UNPUBLISHED. RELEASED FOR PUBLICATION
 © COPYRIGHT - By - ALL RIGHTS RESERVED.

REVISIONS					
P	LTR	DESCRIPTION	DATE	DWN	APVD
	S1	REVISED PER ECR-15-016073	06NOV2015	RZ	RS



1. COPPER ALLOY
- △2 GOLD PLATE PER MIL-G-45204, 0.76μm [.000030] MIN THICKNESS.
- △3 SILVER PLATE PER QQ-S-365, 5.08μm [.000200] MIN THICKNESS.
- △4 TIN-LEAD PLATE PER ASTM-B-545, 2.54μm [.000100] MIN THICKNESS
- △5 MATTE TIN PLATE PER ASTM-B-545, 2.54μm [.000100] MIN THICKNESS

SUPERCEDED BY 9-329099-0	△3	9-329099-2
	△5	9-329099-1
SUPERCEDED BY 9-329099-2	△5	9-329099-0
	△2	1-329099-3
	△4	1-329099-1
	△3	329099
FINISH		PART NUMBER

THIS DRAWING IS A CONTROLLED DOCUMENT.		DWN MICHAEL E. COWHER 14NOV95	STE TE Connectivity														
DIMENSIONS: mm [INCHES]		CHK FRANK MORANA 14NOV95															
TOLERANCES UNLESS OTHERWISE SPECIFIED:		APVD FRANK MORANA 14NOV95	NAME FERRULE														
<table border="0"> <tr><td>0 PLC</td><td>± -</td></tr> <tr><td>1 PLC</td><td>± -</td></tr> <tr><td>2 PLC</td><td>± -</td></tr> <tr><td>3 PLC</td><td>± -</td></tr> <tr><td>4 PLC</td><td>± -</td></tr> <tr><td>ANGLES</td><td>± -</td></tr> </table>		0 PLC	± -	1 PLC	± -	2 PLC	± -	3 PLC	± -	4 PLC	± -	ANGLES	± -	PRODUCT SPEC -	RESTRICTED TO -		
0 PLC	± -																
1 PLC	± -																
2 PLC	± -																
3 PLC	± -																
4 PLC	± -																
ANGLES	± -																
MATERIAL △1		APPLICATION SPEC -	SIZE A3	CAGE CODE 00779	DRAWING NO C-329099												
FINISH △2△3△4△5		WEIGHT -	CUSTOMER DRAWING														
			SCALE 10:1	SHEET 1 OF 1	REV S1												