



Chipsmall Limited consists of a professional team with an average of over 10 year of expertise in the distribution of electronic components. Based in Hongkong, we have already established firm and mutual-benefit business relationships with customers from,Europe,America and south Asia,supplying obsolete and hard-to-find components to meet their specific needs.

With the principle of “Quality Parts,Customers Priority,Honest Operation,and Considerate Service”,our business mainly focus on the distribution of electronic components. Line cards we deal with include Microchip,ALPS,ROHM,Xilinx,Pulse,ON,Everlight and Freescale. Main products comprise IC,Modules,Potentiometer,IC Socket,Relay,Connector.Our parts cover such applications as commercial,industrial, and automotives areas.

We are looking forward to setting up business relationship with you and hope to provide you with the best service and solution. Let us make a better world for our industry!



Contact us

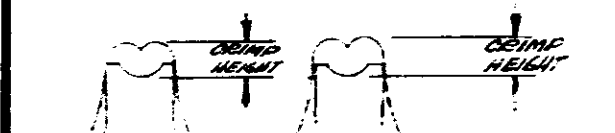
Tel: +86-755-8981 8866 Fax: +86-755-8427 6832

Email & Skype: info@chipsmall.com Web: www.chipsmall.com

Address: A1208, Overseas Decoration Building, #122 Zhenhua RD., Futian, Shenzhen, China




INACTIVE 11/8/77
REFER TO IS.-7046



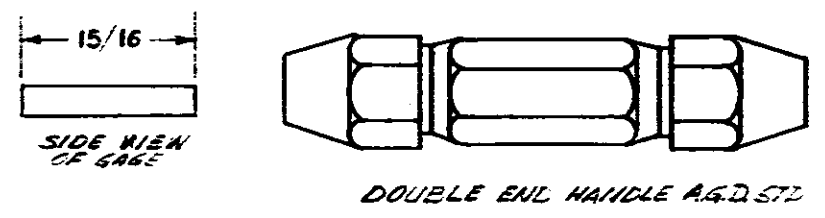
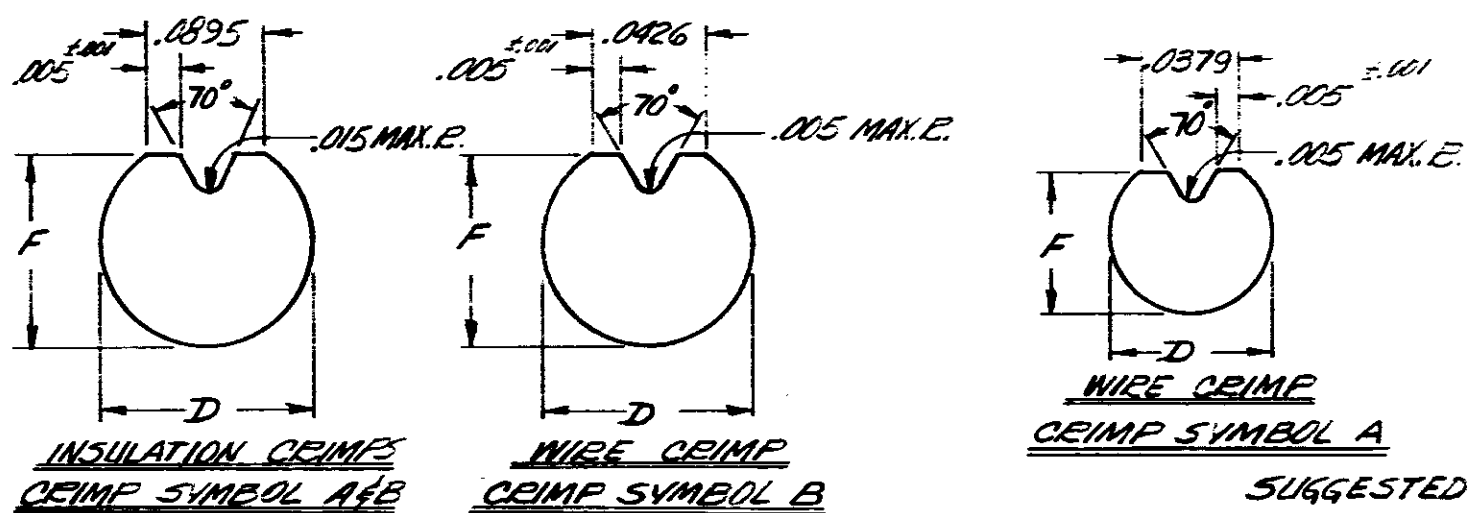
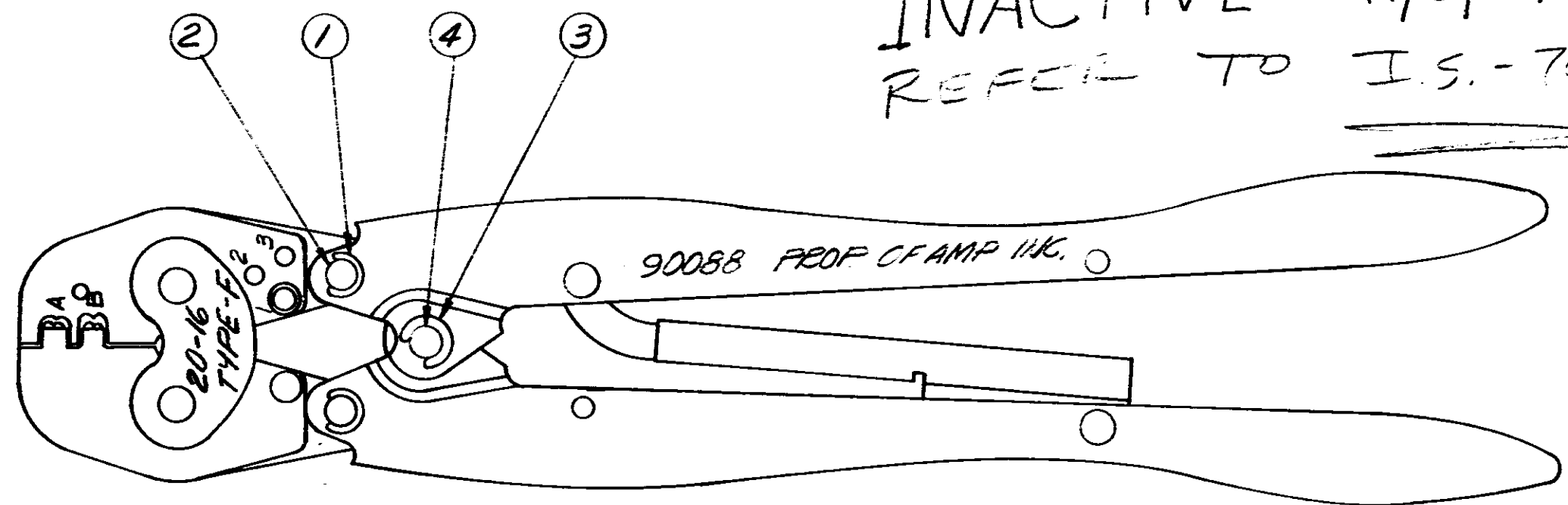
SYMBOL B SYMBOL A

WIRE CRIMP		GO		NO GO		TERMINAL CRIMP HEIGHT
CRIMP SYMBOL	DIM					
A	F	.0446	.0488	.0510		
	D	.0528	.0562	.0470		
B	F	.0509	.0549	.0590		
	D	.0598	.0632	.0540		



SYMBOL A SYMBOL B

INSULATION CRIMP		GO		NO GO	
CRIMP SYMBOL	DIM				
A	F	.0909	.1089		
	D	.1129	.1273		
B	F	.0909	.1089		
	D	.1129	.1273		



APPLICATION TOOLING ENGRS.
CONNECTOR PRODUCTS DIV.

SUGGESTED GAGE DESIGN

1 MA	300449	PIN-RETAINING	4
2 -	21045-6	RING-RETAINING	3
2 MA	300432	PIN-RETAINING	2
4 -	21045-3	RING-RETAINING	1

SEE NOTE #5

INACTIVE,
REFER TO
IS SHEET 7046
11/8/77

1. CRIMP GAGE DIMENSIONS APPLY WHEN TOOL IS CLOSED OR BOTTOMED BUT NOT UNDER PRESSURE.
2. FOR REPLACEMENT OF PARTS OTHER THAN PINS AND SNAP RINGS, TOOL IS TO BE RETURNED TO AMP INC. HARRISBURG, PENNA. TO INSURE PROPER CERTI-CRIMP ADJUSTMENT.
3. FOR TOOL USAGE SEE INSTRUCTION SHEET No 7046
4. HAND TO CAN BE CHECKED BY MEASURING TERMINAL CRIMP HEIGHT
5. GAGE DIMENSIONS ARE MEASURED WITH INSULATION ADJUSTMENT PINS IN #1 POSITION

REVISION RECORD		REVISION RECORD		REVISION RECORD		REVISION RECORD		REVISION RECORD		REVISION RECORD		REVISION RECORD		REVISION RECORD	
LTR	REVISION	DR	CHK	DATE	DESCRIPTION	DWG SIZE	NUMBER	NAME	REMARKS	ITEM NO					
A	INACTIVE PER ECN #1113	SEI		11/8/77											

DR E.L. Kautz 6/14/69 CHK D. S. Smith 6/25/63 DE J. B. ... APP R.L. Jugg 6-25-63		MATERIAL AND FINISH WIRE - RANGE - INSULATION TOLERANCE - EXCEPT AS NOTED SCALE LOC R B NO C-90088 NAME DOUBLE ACTION HAND TOOL		AMP INCORPORATED HARRISBURG, PENNA. CLASS TYPE REV A	
---	--	---	--	--	--

DIMENSIONS IN INCHES DO NOT SCALE PRINT