



Chipsmall Limited consists of a professional team with an average of over 10 year of expertise in the distribution of electronic components. Based in Hongkong, we have already established firm and mutual-benefit business relationships with customers from,Europe,America and south Asia,supplying obsolete and hard-to-find components to meet their specific needs.

With the principle of “Quality Parts,Customers Priority,Honest Operation,and Considerate Service”,our business mainly focus on the distribution of electronic components. Line cards we deal with include Microchip,ALPS,ROHM,Xilinx,Pulse,ON,Everlight and Freescale. Main products comprise IC,Modules,Potentiometer,IC Socket,Relay,Connector.Our parts cover such applications as commercial,industrial, and automotives areas.

We are looking forward to setting up business relationship with you and hope to provide you with the best service and solution. Let us make a better world for our industry!



## Contact us

Tel: +86-755-8981 8866 Fax: +86-755-8427 6832

Email & Skype: info@chipsmall.com Web: www.chipsmall.com

Address: A1208, Overseas Decoration Building, #122 Zhenhua RD., Futian, Shenzhen, China





Designers' Choice

# PLUGS & JACKS

## SHROUDED MALE PIN JACKS & SPRING CONTACT PLUGS

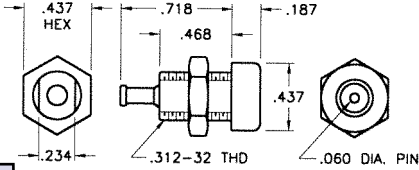
- Fully shrouded connection
- Color coded for easy identification
- Low contact resistance
- Precision spring contact for reliable connection
- Highly durable for multiple insertions
- Plugs available for 20 and 22 gauge wire (crimp or solder)
- Low insertion and withdrawal forces
- Field replaceable and autoclavable



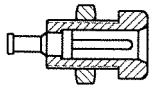
### SPECIFICATIONS

**Current Rating:** 7 Amps  
**Breakdown Voltage:** 3500 VRMS  
**Contact Resistance:** .010 Ω Maximum  
**Plug Shroud Diameter:** .177  
**Operating Temperature:** -66 °F to +185°F (-55°C to +85°C)

### SHROUDED MALE PIN JACK (Fully Insulated)



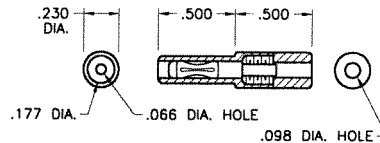
CAT. NO.	COLOR
9000	WHITE
9001	RED
9002	BLACK



**MATERIAL**  
**Male Pin:** Brass, Gold Plate  
**Nut:** Brass, Nickel Plate  
**Insulator:** Polycarbonate

### MATES WITH

### SHROUDED SPRING CONTACT PLUG



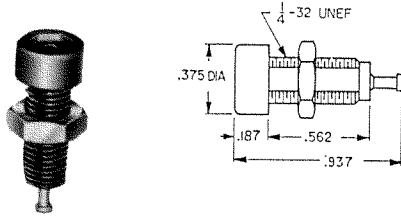
**MATERIAL**  
**Spring Contact:** Beryllium Copper, Gold Plate  
**Body:** Brass, Gold Plate  
**Insulator:** Polycarbonate

CAT. NO.	COLOR	GAUGE
9006	WHITE	20 AWG WIRE
9007	RED	
9008	BLACK	
9012	WHITE	22 AWG WIRE
9013	RED	
9014	BLACK	

## FULLY-INSULATED DELUXE TIP JACK

### ACCEPTS .080" TIP (WITH CLOSED ENTRY CONTACT)

Fully molded body with recessed closed entry design. Assures maximum retention with .010Ω maximum contact resistance. Prevents accidental insertion of larger diameter probes. Current rating: 10 Amps. Breakdown voltage 5700 VRMS. Capacitance to metal panel 2.0 pF nominal. Supplied with nut.



### MATERIAL

**Body:** Molded Nylon ASTM D4066  
**Contact:** Beryllium Copper, Silver Plate  
**Terminal:** Brass, Tin Plate

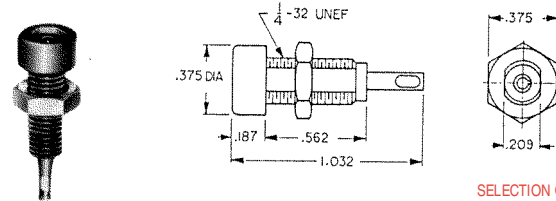
### SELECTION OF COLORS

CAT. NO.	COLOR
6030	WHITE
6031	RED
6032	BLACK
6033	GREEN
6034	YELLOW
6035	BLUE

## FULLY-INSULATED STANDARD TIP JACK

### ACCEPTS .080" TIP

Economical tip jacks with molded Nylon body. Low contact resistance. Formed phosphor bronze contact with solder hole for ease in attaching wire. Current rating 10 Amps. Breakdown voltage 5700 VRMS. Capacitance to metal panel 3.8 pF. Supplied with nut.



### MATERIAL

**Body:** Molded Nylon ASTM D4066  
**Contact:** Phosphor Bronze, Tin Plate

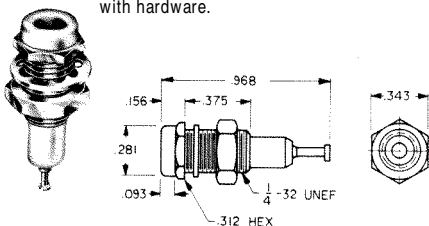
### SELECTION OF COLORS

CAT. NO.	COLOR
6018	WHITE
6019	RED
6020	BLACK
6021	GREEN
6022	YELLOW
6023	BLUE

## METAL-CLAD TIP JACK (MIL)

### ACCEPTS .080" TIP (WITH CLOSED ENTRY CONTACT)

High quality tip jack for high reliability industrial applications. Ideal for use where required to withstand severe environmental conditions, temperature, vibration and salt spray. Recessed closed entry contact. Current rating: 5 Amps. Breakdown voltage: 5700 VRMS. Made to MS-16108 Rev. F of MIL-STD-242A and MIL-C39024/10. Capacitance to metal panel 2.0 pF. Supplied complete with hardware.



### SELECTION OF COLORS

CAT. NO.	COLORS
6012	WHITE
6013	RED
6014	BLACK
6015	GREEN
6016	YELLOW
6017	BLUE

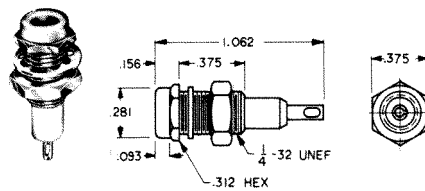
### MATERIAL

**Body:** Molded Nylon ASTM D4066  
**Shell & Nut:** Brass QQ-B-626 Nickel Plate QQ-N-290  
**Contact:** Beryllium Copper PER QQ-C-533. Gold Plate MIL-G-45204

## METAL-CLAD TIP JACK (STD)

### ACCEPTS .080" TIP

Molded Nylon body with metal jacket. Contact is formed from phosphor bronze with solder hole for ease in attaching wire. Designed for positive contact, easy insertion and withdrawal. Current rating: 10 Amps. Breakdown voltage: 5700VRMS. Capacitance to metal panel 3.8 pF. Supplied with nut.



### SELECTION OF COLORS

CAT. NO.	COLOR
6024	WHITE
6025	RED
6026	BLACK
6027	GREEN
6028	YELLOW
6029	BLUE

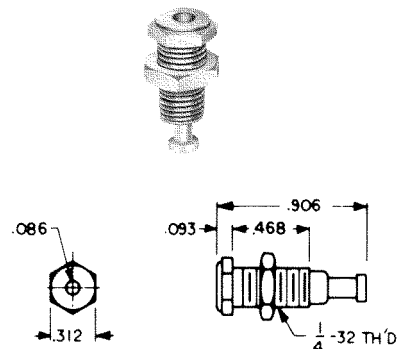
### MATERIAL

**Body:** Molded Nylon ASTM D4066  
**Shell:** Brass, Nickel Plate  
**Contact:** Phosphor, Bronze Silver Plate

## UNINSULATED TIP JACK

### ACCEPTS .080" TIP

Quality, precision machined tip jack made of brass. Ideal for use on metal panels where grounding is required. Fits panels up to 3/8" thk. Complete with hex nut.



### MATERIAL

**Body:** Brass, Nickel Plate  
**Contact:** Beryllium Copper  
**Rating:** 15 Amps.

**CAT. NO. 6097**