



Chipsmall Limited consists of a professional team with an average of over 10 year of expertise in the distribution of electronic components. Based in Hongkong, we have already established firm and mutual-benefit business relationships with customers from,Europe,America and south Asia,supplying obsolete and hard-to-find components to meet their specific needs.

With the principle of “Quality Parts,Customers Priority,Honest Operation,and Considerate Service”,our business mainly focus on the distribution of electronic components. Line cards we deal with include Microchip,ALPS,ROHM,Xilinx,Pulse,ON,Everlight and Freescale. Main products comprise IC,Modules,Potentiometer,IC Socket,Relay,Connector.Our parts cover such applications as commercial,industrial, and automotives areas.

We are looking forward to setting up business relationship with you and hope to provide you with the best service and solution. Let us make a better world for our industry!



Contact us

Tel: +86-755-8981 8866 Fax: +86-755-8427 6832

Email & Skype: info@chipsmall.com Web: www.chipsmall.com

Address: A1208, Overseas Decoration Building, #122 Zhenhua RD., Futian, Shenzhen, China



NOTES:

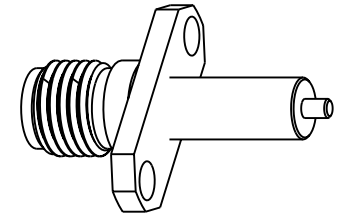
1. MATERIALS AND FINISHES:

BODY, & RING = BRASS, NICKEL PLATED
 CONTACT PIN = BERYLLIUM COPPER, GOLD PLATED (TINNED)
 INSULATOR = PTFE
 SOLDER = Sn60 OR Sn63

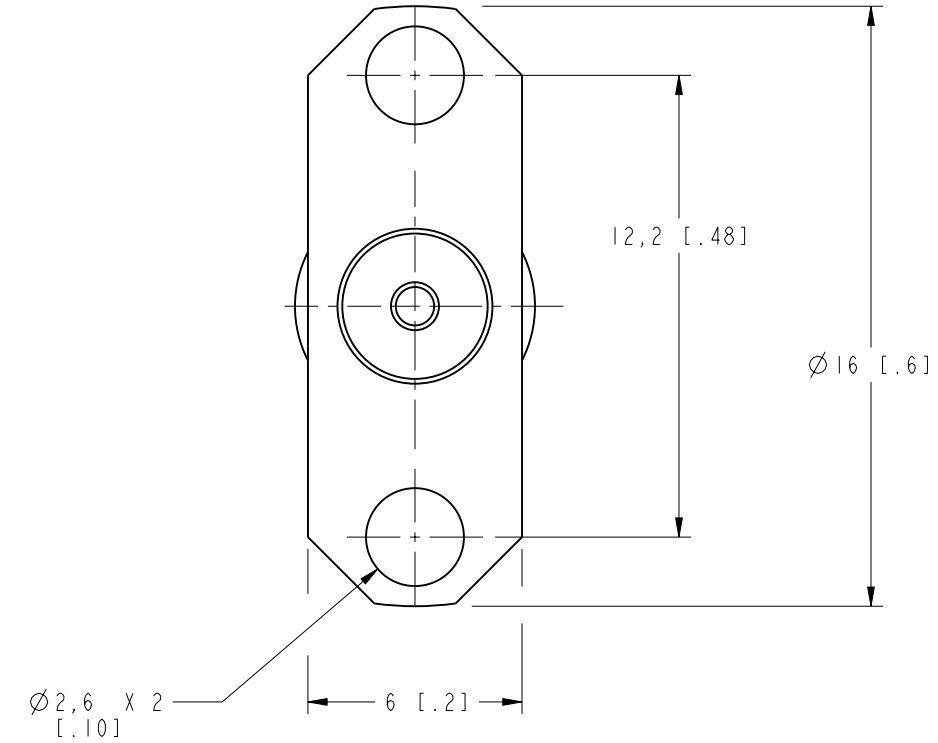
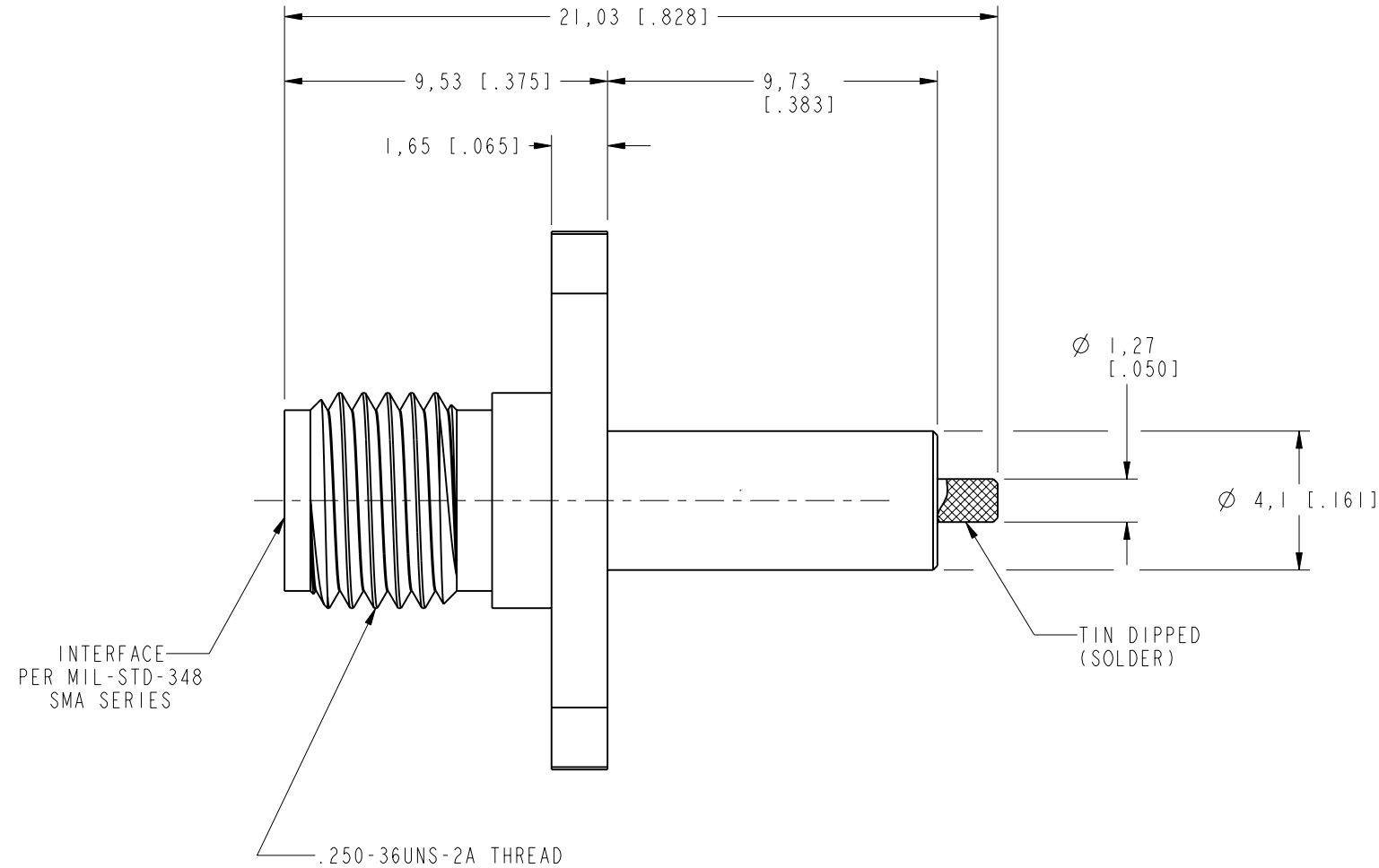
2. ELECTRICAL:

FREQUENCY RANGE = DC-12.4 GHz
 VSWR = 1.400 MAX.
 INSERTION LOSS = 0.25 dB MAX.
 DWV = 1,000 VAC MIN.
 I.R. = 5,000 MEGOHMS MIN.

| | | | | | |
|-------------------|-----|-----------------|---------|-------|------|
| 901-10065 | | REVISIONS | | | |
| DRAWING NO. | REV | DESCRIPTION | DATE | ECO | APPR |
| THIRD ANGLE PROJ. | A | RELEASE TO MFG. | 6/21/02 | 44085 | KJC |



SCALE 2.000



CUSTOMER OUTLINE DRAWING

ALL OTHER SHEETS ARE FOR INTERNAL USE ONLY

| | | | | | | | | |
|---|---|---------------------------|------------------------------|------------------------------------|---------------|--|--------------|--------------|
| UNLESS OTHERWISE SPECIFIED, DIMENSIONS ARE IN INCHES AND TOLERANCES ARE: 0.5 - 6mm ±0.2mm 6 - 30mm ±0.4mm 30 - 120mm ±0.6mm | MATERIAL | DRAWN C. McGRATH | DATE 3/1/02 | TITLE SMA PANEL RECEPTACLE JACK | | Amphenol Amphenol Corporation Communication and Network Products Division Danbury, CT U.S.A. 06810 | | |
| | REFERENCE EAR 508 GEN# 901-9887-RFX_ASSY 615X-1778-100 | ENGINEER B. GLEISSNER | DATE 3/1/02 | | | | | |
| NOTICE - These drawings, specifications, or other data (1) are, and remain the property of Amphenol Corp. (2) must be returned upon request; and (3) are confidential and not to be disclosed to any person other than those to whom they are given by Amphenol Corp. The furnishing of these drawings, specifications, or other data by Amphenol Corp., or to any other person to anyone for any purpose is not to be regarded by implication or otherwise in any manner licensing, granting rights or permitting such holder or any other person to manufacture, use or sell any product, process or design, patented or otherwise, that may in any way be related to or disclosed by said drawings, specifications, or other data. | | APPROVED O. BARTHELMES | DATE 6/21/02 | CODE ID 74868 | DWG SIZE B | DRAWING NO. 901-10065 | SCALE: 5.0:1 | SHEET 2 OF 2 |
| | | | CAD FILE I:\SMA\901-10065 | | | | REV A | |