



Chipsmall Limited consists of a professional team with an average of over 10 year of expertise in the distribution of electronic components. Based in Hongkong, we have already established firm and mutual-benefit business relationships with customers from,Europe,America and south Asia,supplying obsolete and hard-to-find components to meet their specific needs.

With the principle of “Quality Parts,Customers Priority,Honest Operation,and Considerate Service”,our business mainly focus on the distribution of electronic components. Line cards we deal with include Microchip,ALPS,ROHM,Xilinx,Pulse,ON,Everlight and Freescale. Main products comprise IC,Modules,Potentiometer,IC Socket,Relay,Connector.Our parts cover such applications as commercial,industrial, and automotives areas.

We are looking forward to setting up business relationship with you and hope to provide you with the best service and solution. Let us make a better world for our industry!



Contact us

Tel: +86-755-8981 8866 Fax: +86-755-8427 6832

Email & Skype: info@chipsmall.com Web: www.chipsmall.com

Address: A1208, Overseas Decoration Building, #122 Zhenhua RD., Futian, Shenzhen, China



1. MATERIALS AND FINISHES:
BODIES - STAINLESS STEEL, PASSIVATED
CONTACT - BeCu, GOLD PLATING (.000050 THICK MIN)
INSULATOR - PTFE
FERRULE - BRASS, NICKEL PLATING (.000100 THICK MIN)

2. ELECTRICAL:

- A. IMPEDANCE: 50 OHM
- B. FREQUENCY RANGE: DC - 18 GHz
- C. VSWR(RETURN LOSS): 1.15 + .03f (GHz), MAX.
- D. DIELECTRIC WITHSTANDING VOLTAGE: 750 VRMS, MIN.

3. MECHANICAL:
A. DURABILITY: 500 CYCLES MIN.
B. TEMPERATURE RANGE: -65° C TO 165° C

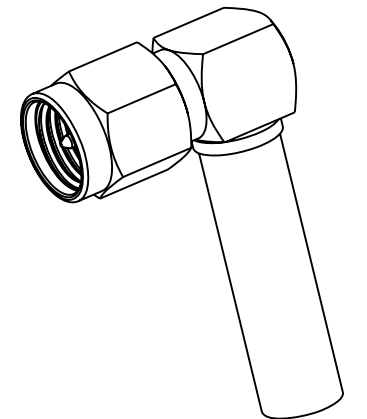
4. PACKAGING:
A. QUANTITY: SINGLE PACK
B. MARKING: BAG TO BE MARKED
"AMPHENOL, 901-9531-3SF, AND DATE CODE"

5. FOR CABLE STRIPPING AND ASSEMBLY INSTRUCTIONS
SEE 349-50180, SHEET 6. USE CRIMP TOOL 227-944
WITH DIE SET 227-1221-03, CAVITY 'A'
(M22520/5-03 CLOSURE 'A') .128 HEX.

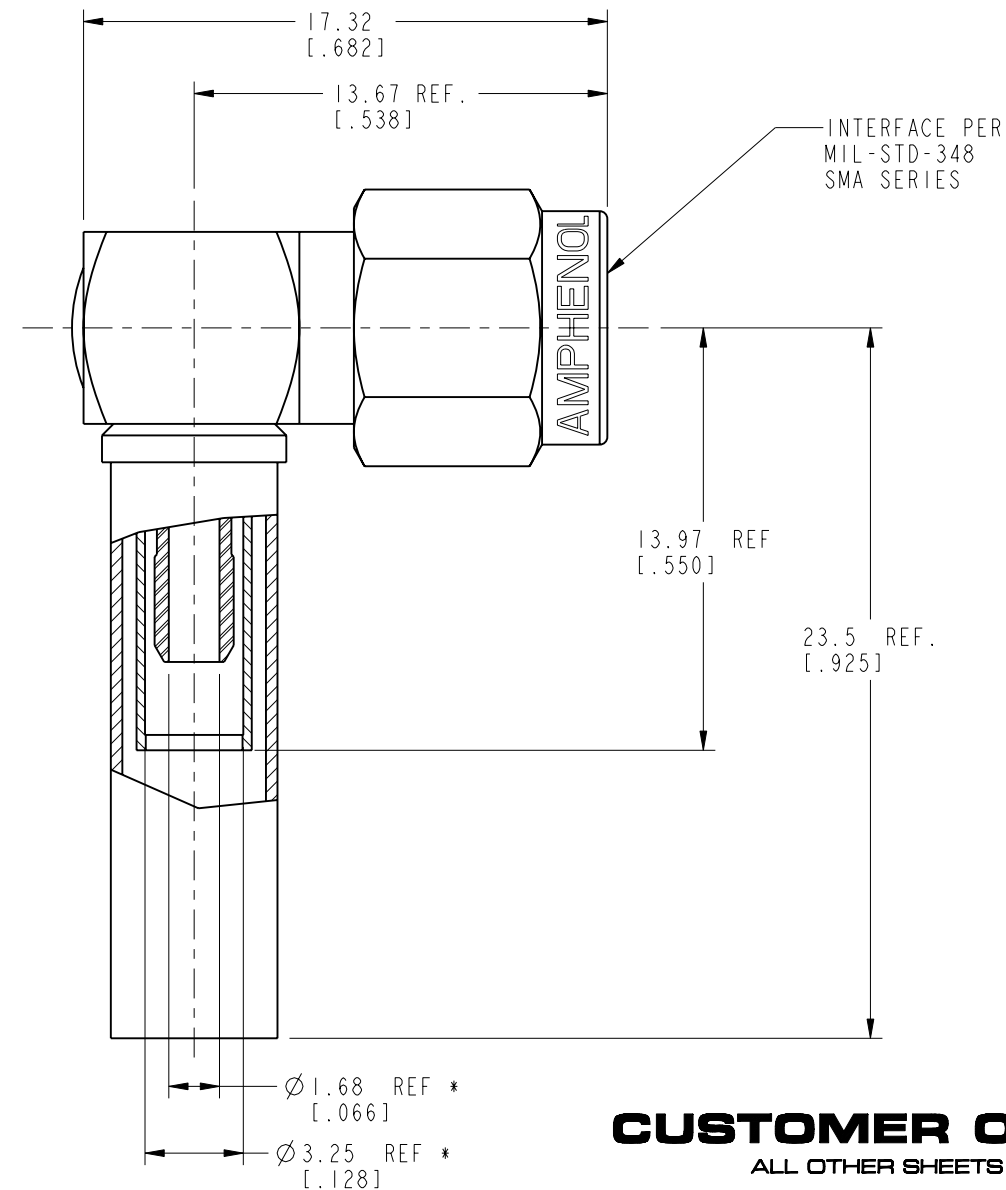
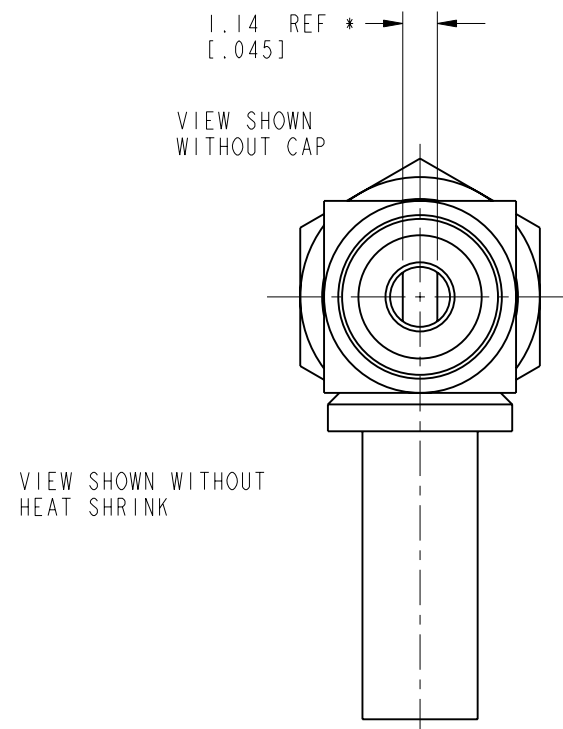
6. ASTERISK (*) INDICATES CABEL ENTRY DIMENSIONS

REVISIONS

REV	DESCRIPTION	DATE	ECO	APPR
A	RELEASE TO MFG.	12-Sep-88	35827	PB
T	SEE SHEET I	21-Jun-02	44080	KJC
U	SEE SHEET I	07-Aug-12	49022	CPM
V	SHOW METRIC DIMENSIONS, UPDATE DRAWING	05-Dec-13	49795	SH



SCALE 2.000



CUSTOMER OUTLINE DRAWING

ALL OTHER SHEETS ARE FOR INTERNAL USE ONLY

UNLESS OTHERWISE SPECIFIED, DIMENSIONS ARE IN METRIC AND TOLERANCES ARE: <0.5mm 0.5 - 6mm 6 - 30mm 30 - 120mm ANGLES ± 0.05mm ±0.1mm ±0.2mm ± 0.3mm ±1° NOTICE - These drawings, specifications, or other data (1) are, and remain the property of Amphenol corp. (2) must be returned upon request; and (3) are confidential and not to be disclosed to any person other than those to whom they are given by Amphenol Corp. the furnishing of these drawings, specifications, or other data by Amphenol Corp., or to any other person to anyone for any purpose is not to be regarded by implication or otherwise in any manner licensing, granting rights to permitting such holder or any other person to manufacture, use or sell any product, process or design, patented or otherwise, that may in any way be related to or disclosed by said drawings, specifications, or other data.	MATERIAL - -	DRAWN S.DUAN	DATE 03-Dec-13	TITLE SMA PLUG RIGHT ANGLE FOR RG-316 CABLE		Amphenol RF www.amphenolrf.com	
	REFERENCE D.O.R. 313431 611X-704 GEN# ASSYMI-SMA	ENGINEER K.CAPOZZI	DATE 19-Mar-96			DRAWING NO. 901-9531-3SF	
		APPROVED S.HSIEH	DATE 03-Dec-13			SCALE: 4.0:1.0	SHEET 2 OF 2
		CAD FILE	DWG SIZE B		REV V	ITEM NO. 901-9531-3SF	
	FINISH					PART NO. 901-9531-3SF	