



Chipsmall Limited consists of a professional team with an average of over 10 year of expertise in the distribution of electronic components. Based in Hongkong, we have already established firm and mutual-benefit business relationships with customers from,Europe,America and south Asia,supplying obsolete and hard-to-find components to meet their specific needs.

With the principle of “Quality Parts,Customers Priority,Honest Operation,and Considerate Service”,our business mainly focus on the distribution of electronic components. Line cards we deal with include Microchip,ALPS,ROHM,Xilinx,Pulse,ON,Everlight and Freescale. Main products comprise IC,Modules,Potentiometer,IC Socket,Relay,Connector.Our parts cover such applications as commercial,industrial, and automotives areas.

We are looking forward to setting up business relationship with you and hope to provide you with the best service and solution. Let us make a better world for our industry!



## Contact us

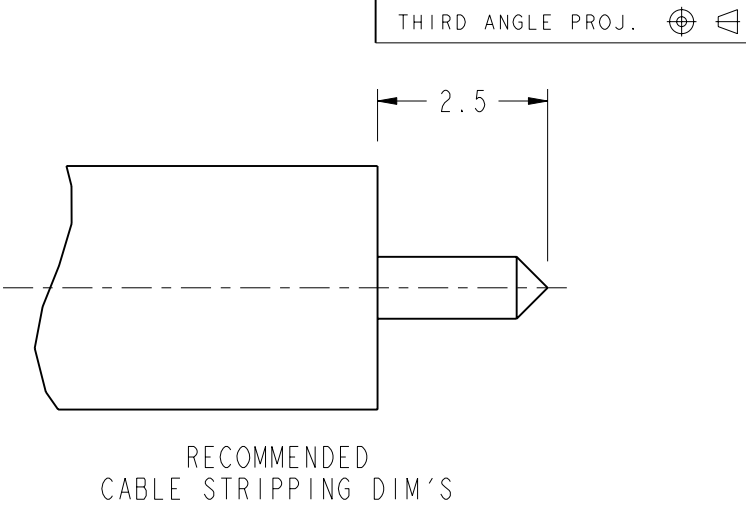
Tel: +86-755-8981 8866 Fax: +86-755-8427 6832

Email & Skype: [info@chipsmall.com](mailto:info@chipsmall.com) Web: [www.chipsmall.com](http://www.chipsmall.com)

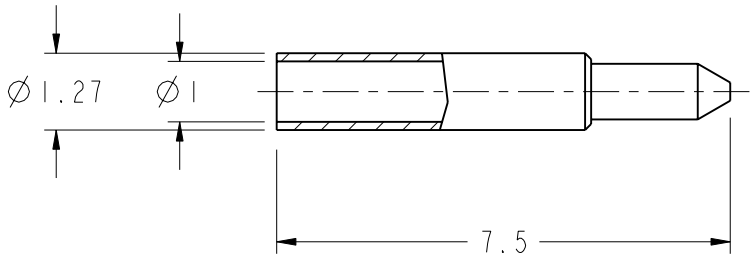
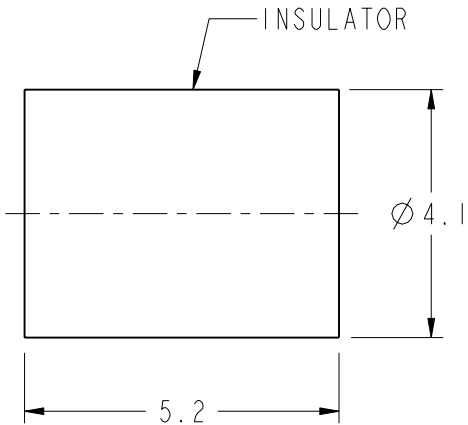
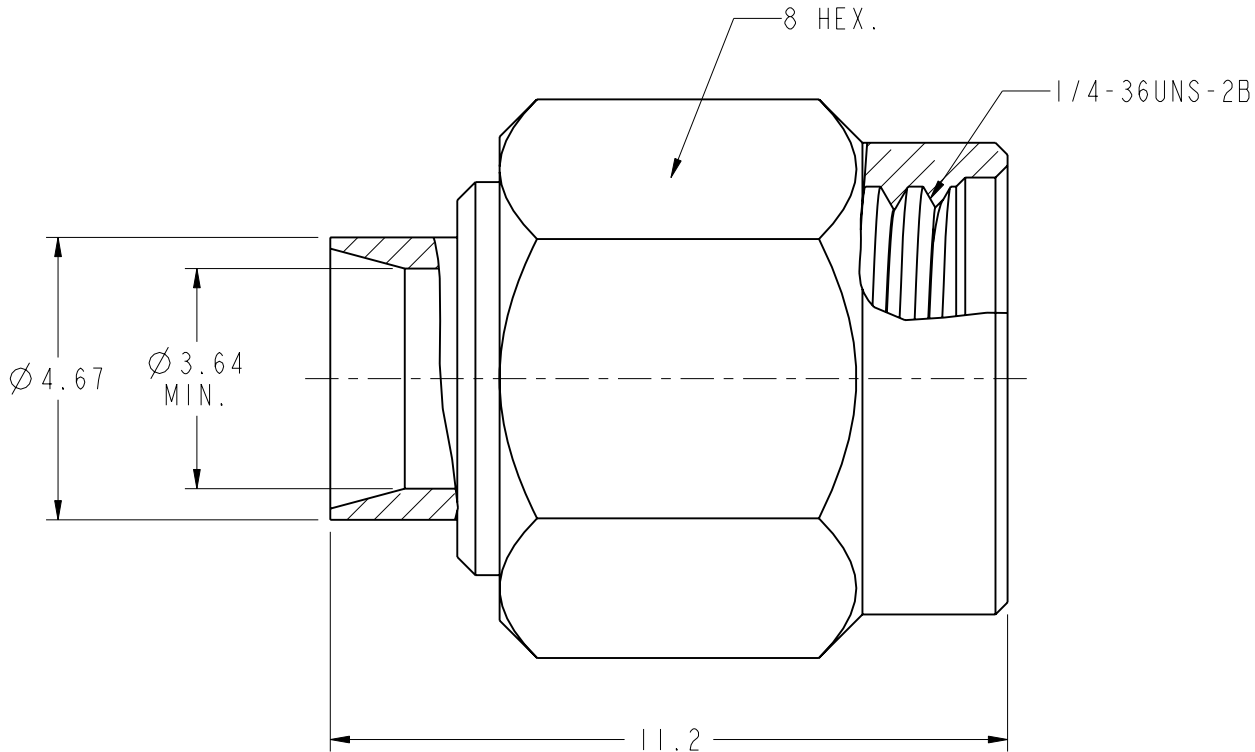
Address: A1208, Overseas Decoration Building, #122 Zhenhua RD., Futian, Shenzhen, China



- NOTES:
- 1. MATERIAL AND FINISH (PLATING THICKNESS IN MICRO-INCHES):  
BODY - BRASS, GOLD PLATING  
CONTACT - BRASS, GOLD PLATING  
INSULATOR - PTFE, NATURAL
  - 2. ELECTRICAL:  
A. IMPEDANCE: 50 OHM  
B. FREQUENCY RANGE: DC - 18 GHz  
C. DIELECTRIC WITHSTANDING VOLTAGE:1500 VRMS. MIN.
  - 3. MECHANICAL:  
A. DURABILITY:500 CYCLES MIN.  
B. TEMPERATURE RANGE:-65°C TO +165°C
  - 4. CONTACT PIN TO SOLDER



REVISIONS				
REV	DESCRIPTION	DATE	ECO	APPR
A	RELEASE TO MFG.	2/2/01	43661	
B	NO.1 WAS CHANGED\RD-DM89042001C	20-Apr-00		
BI	RR00AAD03A WAS SMA5000-4-B	08-27-08'		SX
C	THE BODY WAS CHANGE\RD-DM12011601R3	16-Jan-12		SH
D	SYNCH THE DRAWING WITH DANBURY	1-Mar-12	48967	SH



**CUSTOMER OUTLINE DRAWING**  
ALL OTHER SHEETS ARE FOR INTERNAL USE ONLY

<div>UNLESS OTHERWISE SPECIFIED, DIMENSIONS ARE IN METRIC AND TOLERANCES ARE: &lt;0.5mm 0.5 - 6mm 6 - 30mm 30 - 120mm ANGLES ± 0.05mm ±0.1mm ±0.2mm ± 0.3mm ±1°</div> <div>NOTICE - These drawings, specifications, or other data (1) are, and remain the property of Amphenol corp. (2) must be returned upon request; and (3) are confidential and not to be disclosed to any person other than those to whom they are given by Amphenol Corp. the furnishing of these drawings, specifications, or other data by Amphenol Corp., or to any other person to anyone for any purpose is not to be regarded by implication or otherwise in any manner licensing, granting rights to permitting such holder or any other person to manufacture, use or sell any product, process or design, patented or otherwise, that may in any way be related to or disclosed by said drawings, specifications, or other data.</div>	MATERIAL	DRAWN R.MAO	DATE 12-Jan-12	TITLE SMA SOLDER PLUG FOR .141 DIA SEMI-RIGID CABLE		Amphenol RF www.amphenolrf.com	
		ENGINEER S.XIE	DATE 27-Aug-08				
	REFERENCE AND	APPROVED S.HSIEH	DATE 12-Jan-12	SCALE: 8.0:1.0 SHEET 2 OF 2		DRAWING NO.SMA1181A1-3GT50G-.141-50	
	CONFIGURATION LEVEL:	CAD FILE		DWG SIZE B	REV D	ITEM NO. 111181AAA42GA5F	
	FINISH	I:\SMA\SM1181A1-NT50G-141-50				PART NO. 901-9868-RFX	