



Chipsmall Limited consists of a professional team with an average of over 10 year of expertise in the distribution of electronic components. Based in Hongkong, we have already established firm and mutual-benefit business relationships with customers from,Europe,America and south Asia,supplying obsolete and hard-to-find components to meet their specific needs.

With the principle of “Quality Parts,Customers Priority,Honest Operation,and Considerate Service”,our business mainly focus on the distribution of electronic components. Line cards we deal with include Microchip,ALPS,ROHM,Xilinx,Pulse,ON,Everlight and Freescale. Main products comprise IC,Modules,Potentiometer,IC Socket,Relay,Connector.Our parts cover such applications as commercial,industrial, and automotives areas.

We are looking forward to setting up business relationship with you and hope to provide you with the best service and solution. Let us make a better world for our industry!



## Contact us

Tel: +86-755-8981 8866 Fax: +86-755-8427 6832

Email & Skype: [info@chipsmall.com](mailto:info@chipsmall.com) Web: [www.chipsmall.com](http://www.chipsmall.com)

Address: A1208, Overseas Decoration Building, #122 Zhenhua RD., Futian, Shenzhen, China




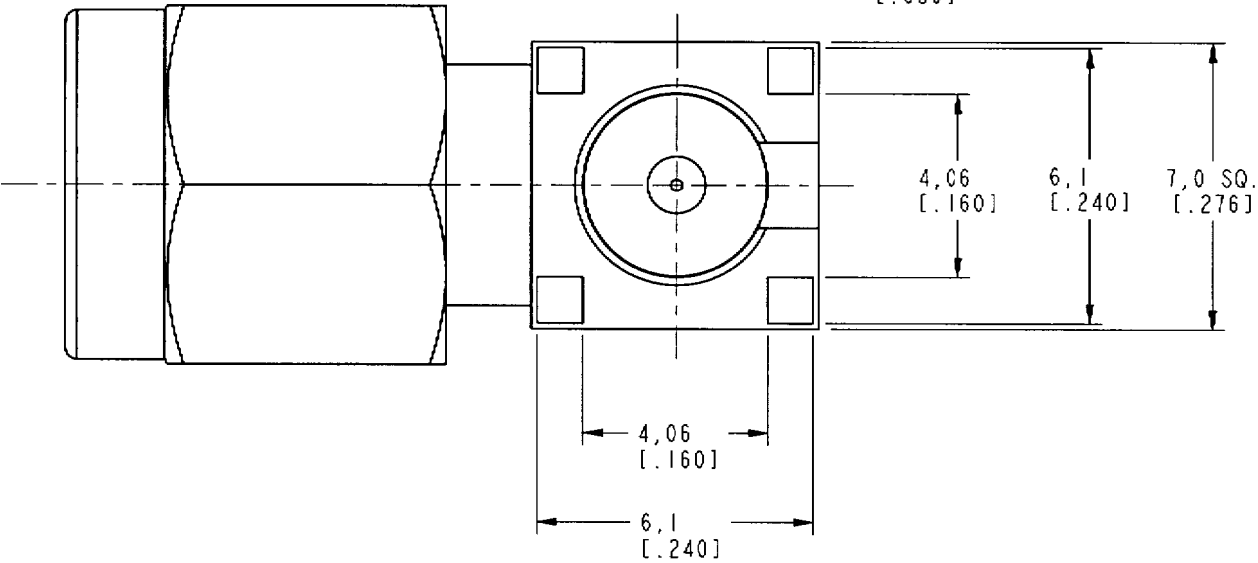
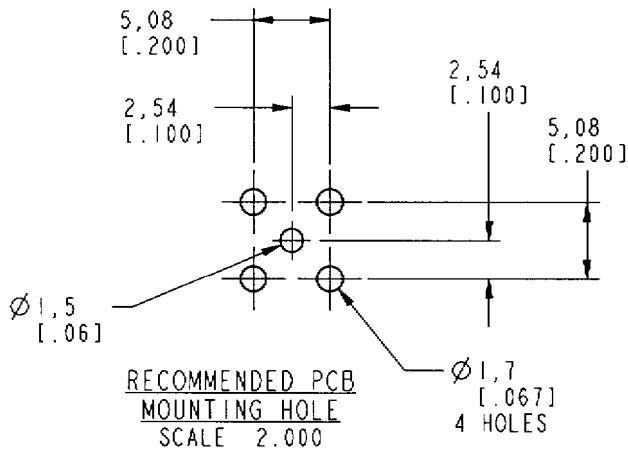
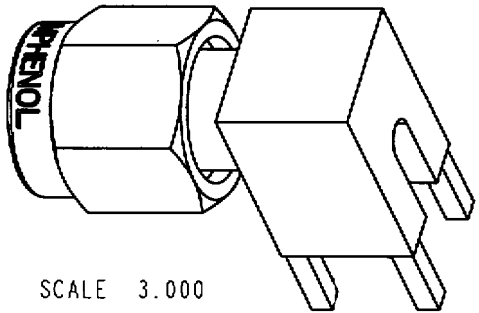
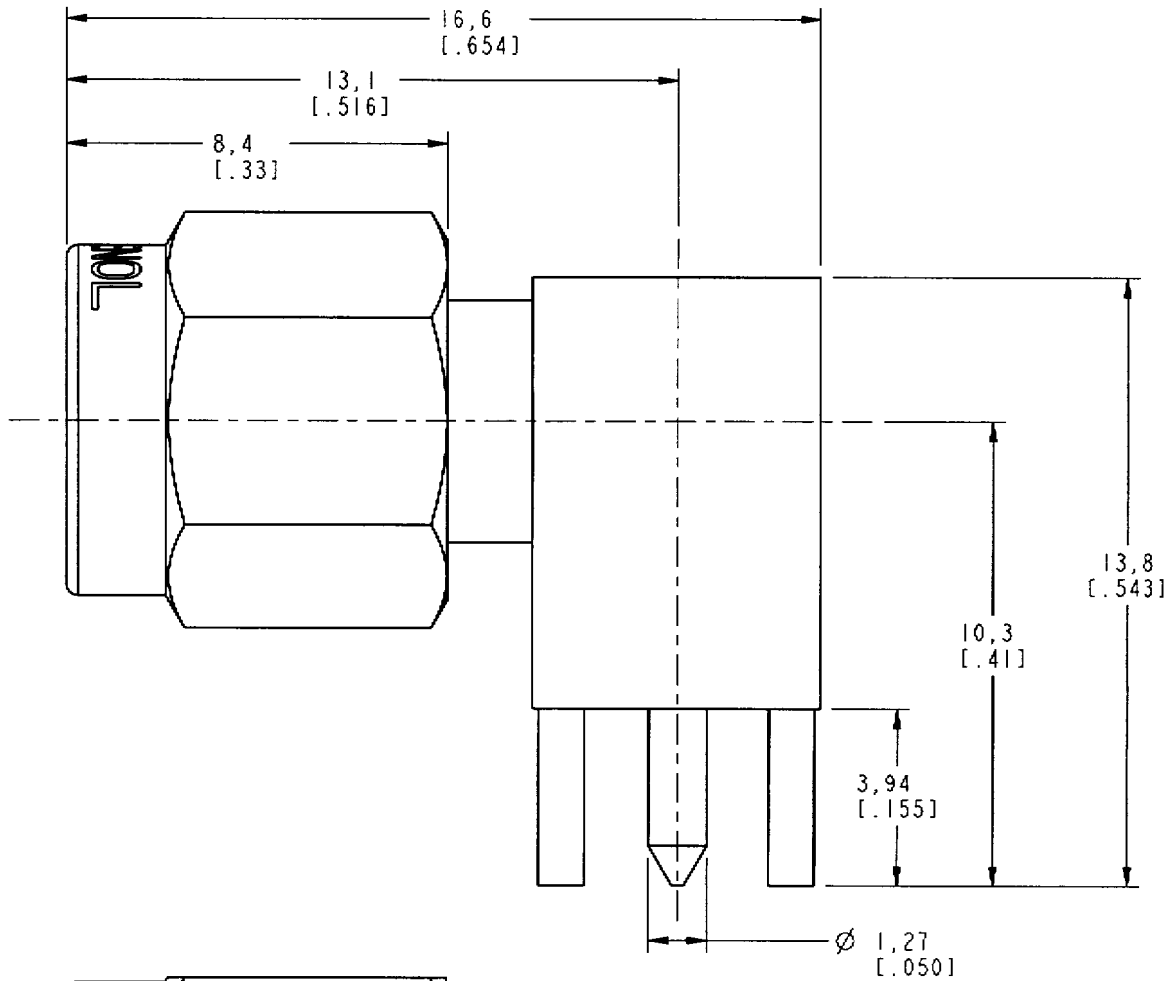
NOTES:

1. MATERIALS OF CONSTRUCTION:  
SHELL, HOUSING WITH BODY - BRASS (QQ-B-626), GOLD PLATED  
CONTACT PINS (2) - BRASS (QQ-B-626), GOLD PLATED  
INSULATORS (2) - TEFLON PER MIL-P-19468  
RETAINER RING = BeCu, NATURAL  
GASKET = SILICONE RUBBER, COLOR RED  
COVER = BRASS (QQ-B-613), GOLD PLATED

901-9894-RFX

REVISIONS

DRAWING NO.	REV	DESCRIPTION	DATE	ECO	APPR
THIRD ANGLE PROJ. 	A	RELEASE TO MFG.	1-25-01	43650	CPM



CUSTOMER OUTLINE DRAWING  
FOR REFERENCE ONLY

UNLESS OTHERWISE SPECIFIED, DIMENSIONS ARE IN INCHES AND TOLERANCES ARE:  
0.5 - 6mm  $\pm$  0.2mm  
6 - 30mm  $\pm$  0.4mm  
30 - 120mm  $\pm$  0.6mm

NOTICE - These drawings, specifications, or other data (1) are, and remain the property of Amphenol Corp. (2) must be returned upon request; and (3) are confidential and not to be disclosed to any person other than those to whom they are given by Amphenol Corp. The furnishing of these drawings, specifications, or other data by Amphenol Corp., or to any other person to anyone for any purpose is not to be regarded by implication or otherwise in any manner licensing, granting rights or permitting such holder or any other person to manufacture, use or sell any product, process or design, patented or otherwise, that may in any way be related to or disclosed by said drawings, specifications, or other data.

MATERIAL

REFERENCE  
EAR 967698-0  
GEN# 901-143-6RFX\_ASSY

DRAWN  
C. McGRATH

DATE  
1/11/01

ENGINEER  
O. BARTHELMES

DATE  
1/11/01

APPROVED

CAD FILE  
I:\SMA\901-9894-RFX

DATE  
1/25/01

TITLE

SMA PLUG  
RIGHT ANGLE  
PC MOUNT

Amphenol

Amphenol Corporation  
Communication and Network  
Products Division  
Danbury, CT U.S.A. 06810

SCALE: 6.0:1 SHEET 2 OF 2

CODE ID  
74868

DWG SIZE  
B

DRAWING NO.

901-9894-RFX

REV

A