



Chipsmall Limited consists of a professional team with an average of over 10 year of expertise in the distribution of electronic components. Based in Hongkong, we have already established firm and mutual-benefit business relationships with customers from,Europe,America and south Asia,supplying obsolete and hard-to-find components to meet their specific needs.

With the principle of “Quality Parts,Customers Priority,Honest Operation,and Considerate Service”,our business mainly focus on the distribution of electronic components. Line cards we deal with include Microchip,ALPS,ROHM,Xilinx,Pulse,ON,Everlight and Freescale. Main products comprise IC,Modules,Potentiometer,IC Socket,Relay,Connector.Our parts cover such applications as commercial,industrial, and automotives areas.

We are looking forward to setting up business relationship with you and hope to provide you with the best service and solution. Let us make a better world for our industry!



Contact us

Tel: +86-755-8981 8866 Fax: +86-755-8427 6832

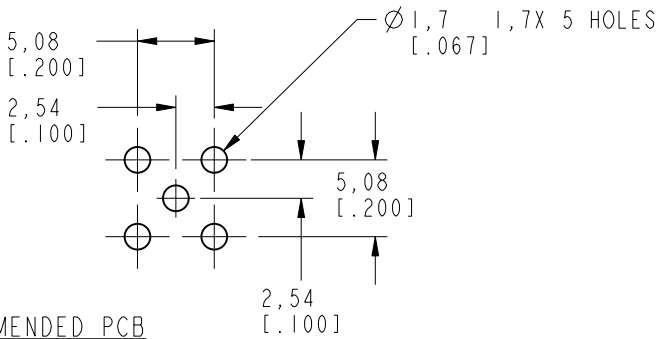
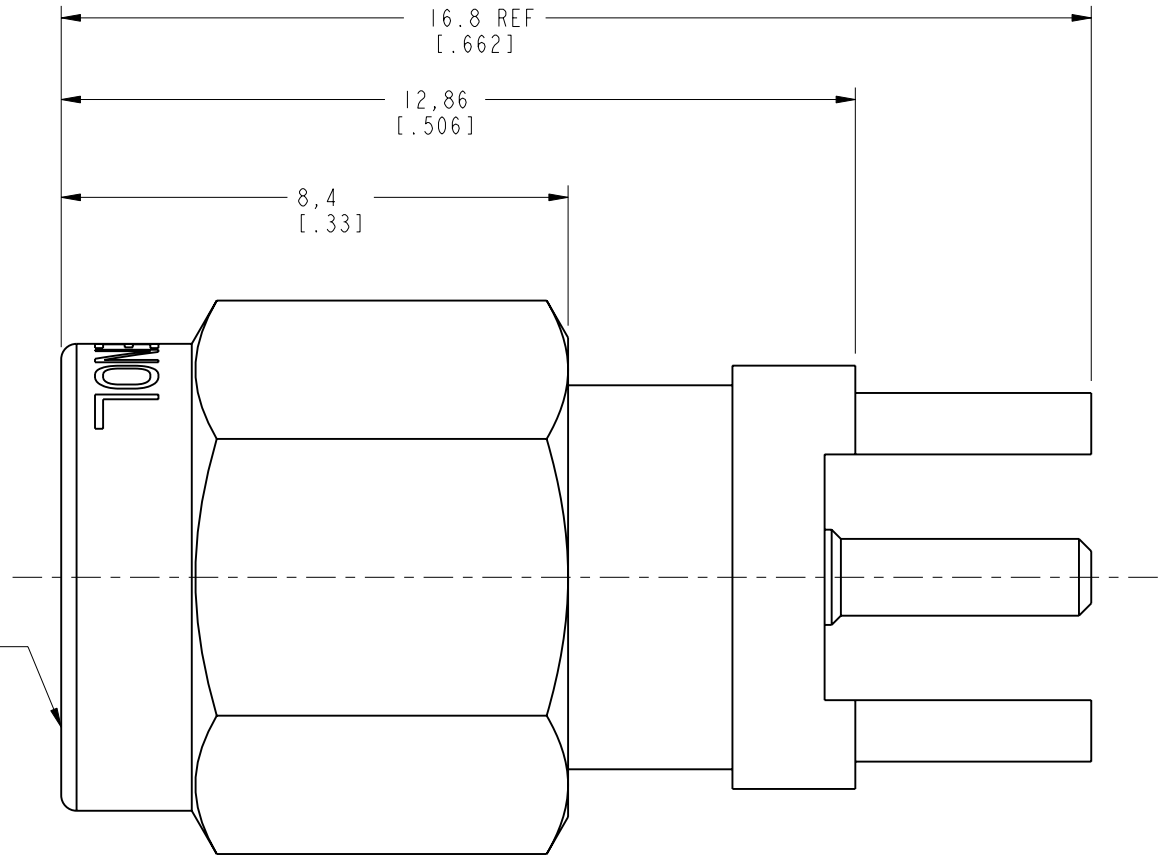
Email & Skype: info@chipsmall.com Web: www.chipsmall.com

Address: A1208, Overseas Decoration Building, #122 Zhenhua RD., Futian, Shenzhen, China

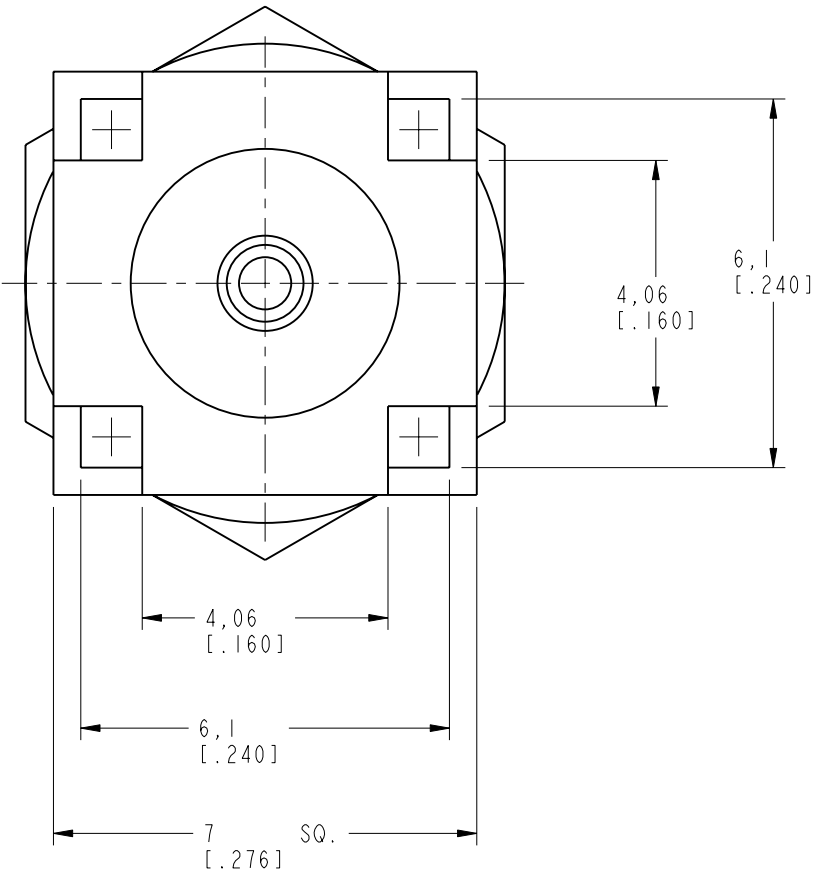
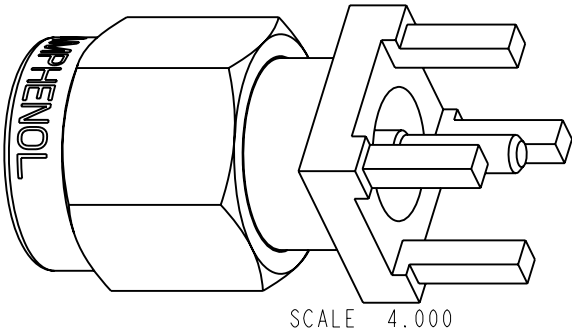


NOTES:

1. MATERIALS OF CONSTRUCTION:
BODY, RING & SHELL = BRASS, GOLD PLATED
CONTACT PIN = BRASS, GOLD PLATED
RETAINER RING = BeCu, NATURAL
INSULATORS (2) = TEFLON, PER MIL-P-19468
GASKET = SILICONE RUBBER, COLOR RED



RECOMMENDED PCB
MOUNTING HOLE
SCALE 2.000



CUSTOMER OUTLINE DRAWING
ALL OTHER SHEETS ARE FOR INTERNAL USE ONLY

UNLESS OTHERWISE SPECIFIED, DIMENSIONS ARE IN MM (INCHES) AND TOLERANCES ARE:
0.5 - 6mm ±0.2mm
6 - 30mm ±0.4mm
30 - 120mm ± 0.6mm

NOTICE - These drawings, specifications, or other data (1) are, and remain the property of Amphenol Corp. (2) must be returned upon request; and (3) are confidential and not to be disclosed to any person other than those to whom they are given by Amphenol Corp. The furnishing of these drawings, specifications, or other data by Amphenol Corp., or to any other person to anyone for any purpose is not to be regarded by implication or otherwise in any manner licensing, granting rights or permitting such holder or any other person to manufacture, use or sell any product, process or design, patented or otherwise, that may in any way be related to or disclosed by said drawings, specifications, or other data.

MATERIAL

REFERENCE
EAR 967689-0
GEN# 910-144-8RFX_ASSY

DRAWN

C. McGRATH

ENGINEER

O. BARTHELMES

APPROVED

O. BARTHELMES

CAD FILE

I:\SMA\ 901-9895-RFX

DATE

1/10/01

DATE

1/10/01

DATE

1/25/01

TITLE

SMA PCB MOUNT
PLUG

CODE ID

74868

DWG SIZE

B

DRAWING NO.

901-9895-RFX

REV

B

Amphenol

Amphenol Corporation
Communication and Network
Products Division
Danbury, CT U.S.A. 06810

SCALE: 8.0:1

SHEET 2 OF 2