



Chipsmall Limited consists of a professional team with an average of over 10 year of expertise in the distribution of electronic components. Based in Hongkong, we have already established firm and mutual-benefit business relationships with customers from,Europe,America and south Asia,supplying obsolete and hard-to-find components to meet their specific needs.

With the principle of “Quality Parts,Customers Priority,Honest Operation,and Considerate Service”,our business mainly focus on the distribution of electronic components. Line cards we deal with include Microchip,ALPS,ROHM,Xilinx,Pulse,ON,Everlight and Freescale. Main products comprise IC,Modules,Potentiometer,IC Socket,Relay,Connector.Our parts cover such applications as commercial,industrial, and automotives areas.

We are looking forward to setting up business relationship with you and hope to provide you with the best service and solution. Let us make a better world for our industry!



Contact us

Tel: +86-755-8981 8866 Fax: +86-755-8427 6832

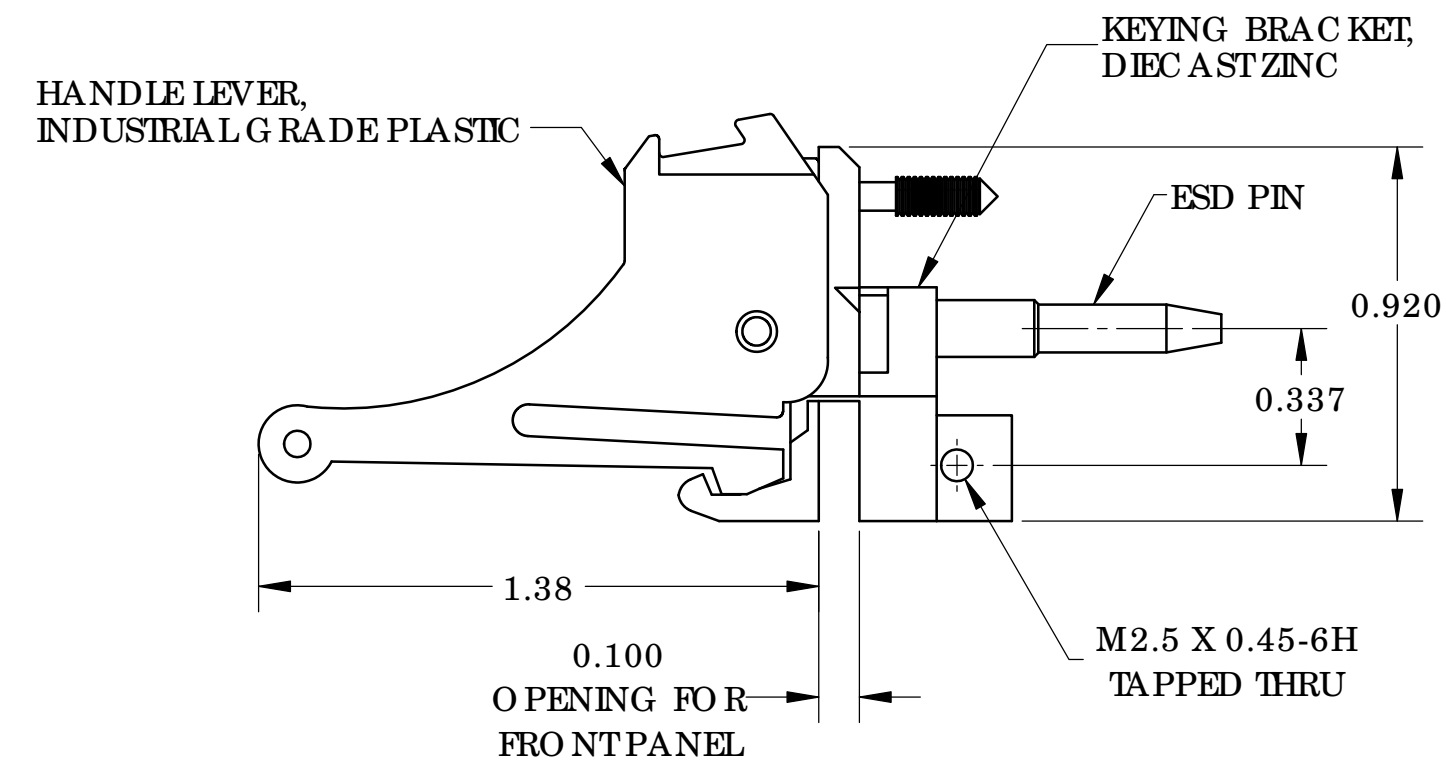
Email & Skype: info@chipsmall.com Web: www.chipsmall.com

Address: A1208, Overseas Decoration Building, #122 Zhenhua RD., Futian, Shenzhen, China

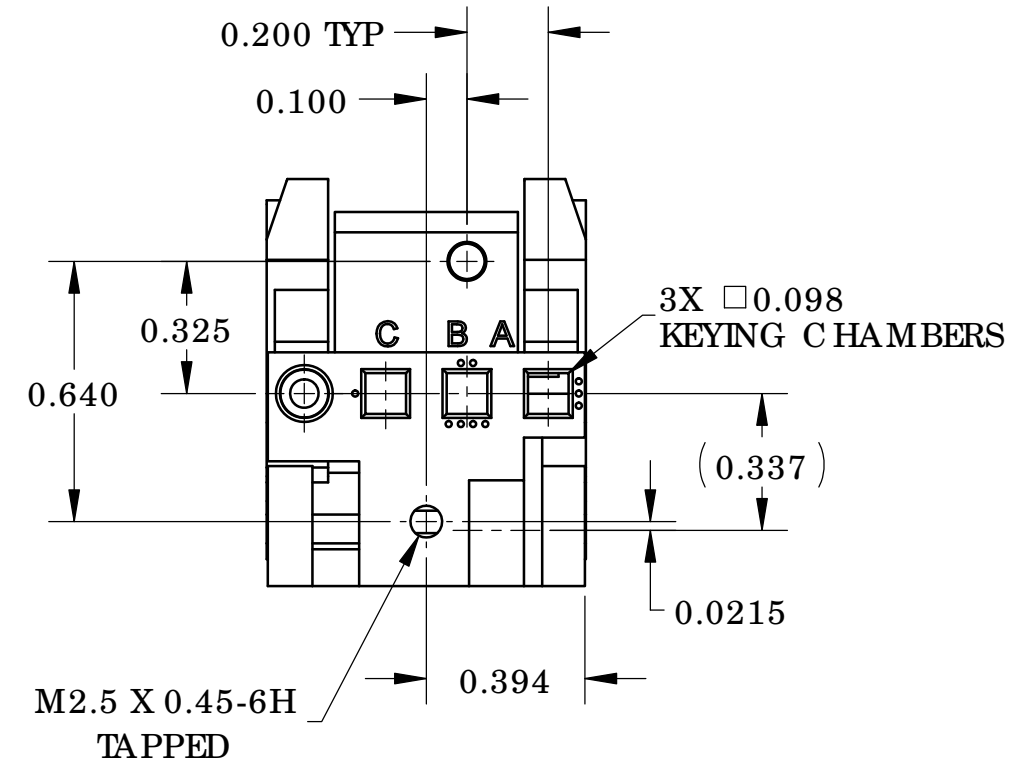


PROPRIETARY AND CONFIDENTIAL
 THE INFORMATION CONTAINED IN THIS DRAWING IS THE SOLE PROPERTY OF VECTOR ELECTRONICS & TECHNOLOGY, INC. ANY REPRODUCTION IN PART OR AS A WHOLE WITHOUT THE WRITTEN PERMISSIONS OF VECTOR ELECTRONICS & TECHNOLOGY, INC. IS PROHIBITED.

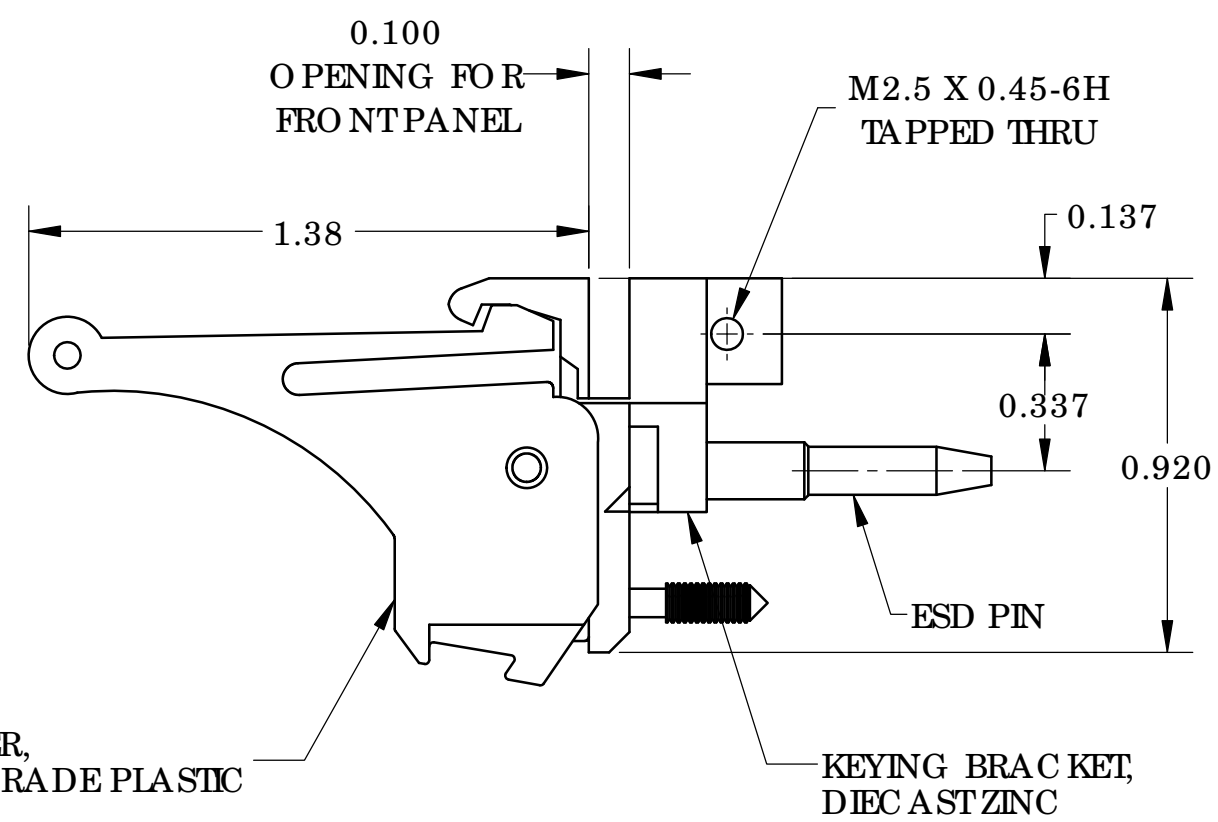
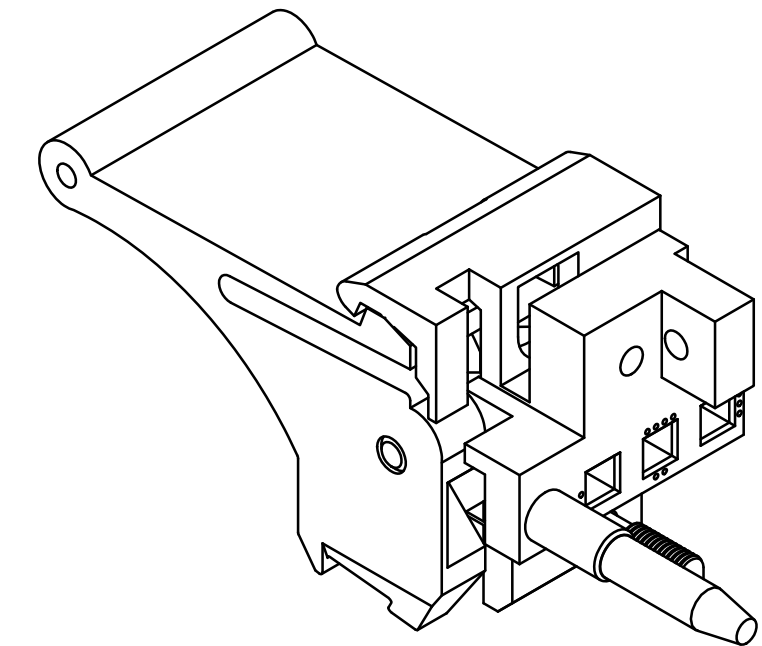
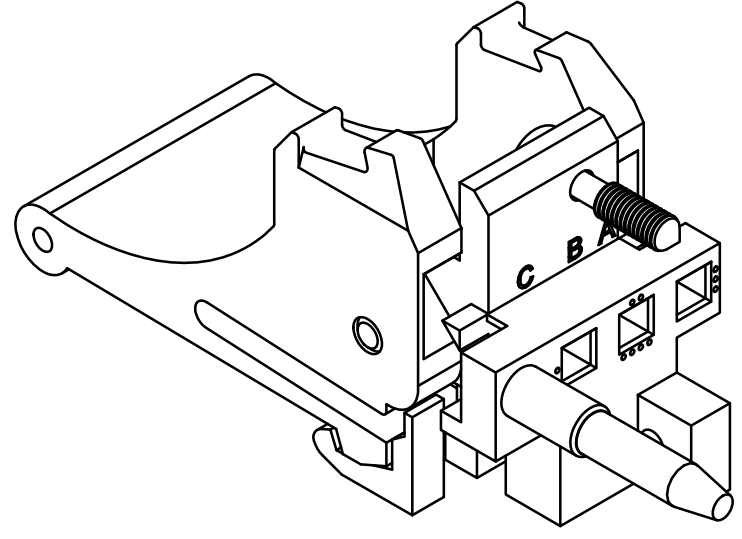
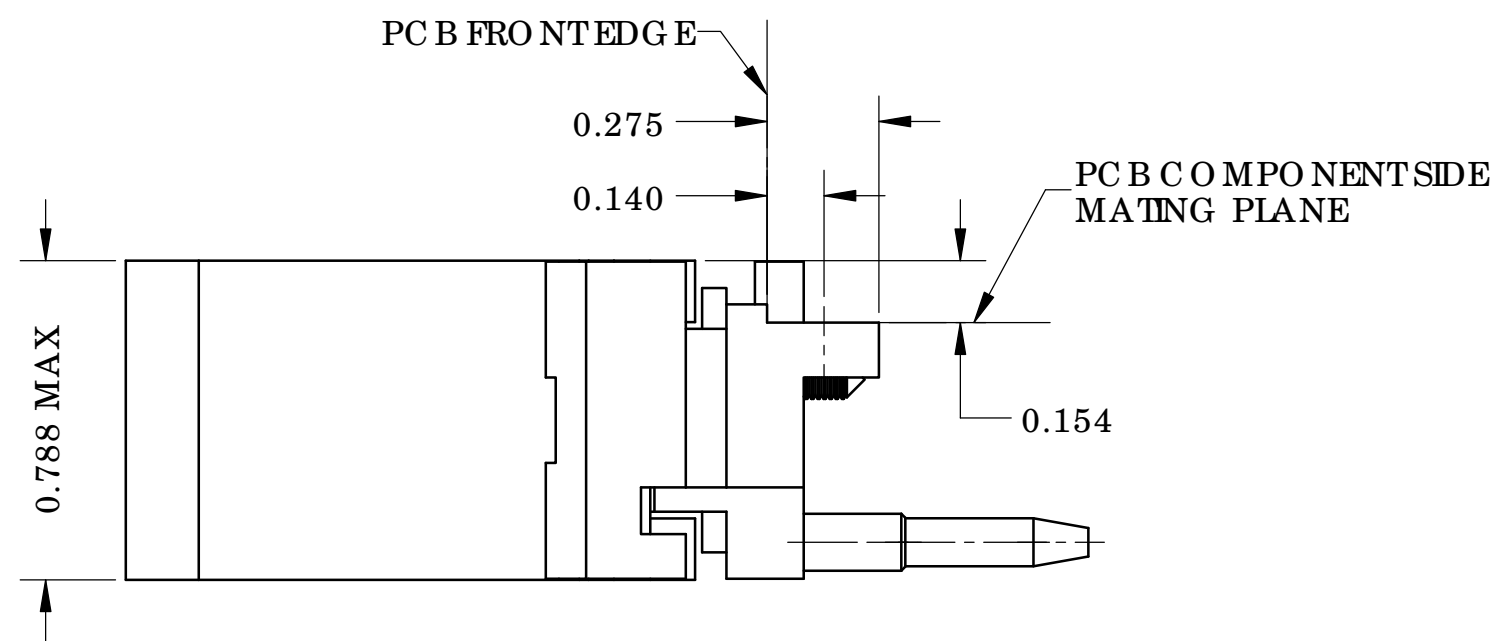
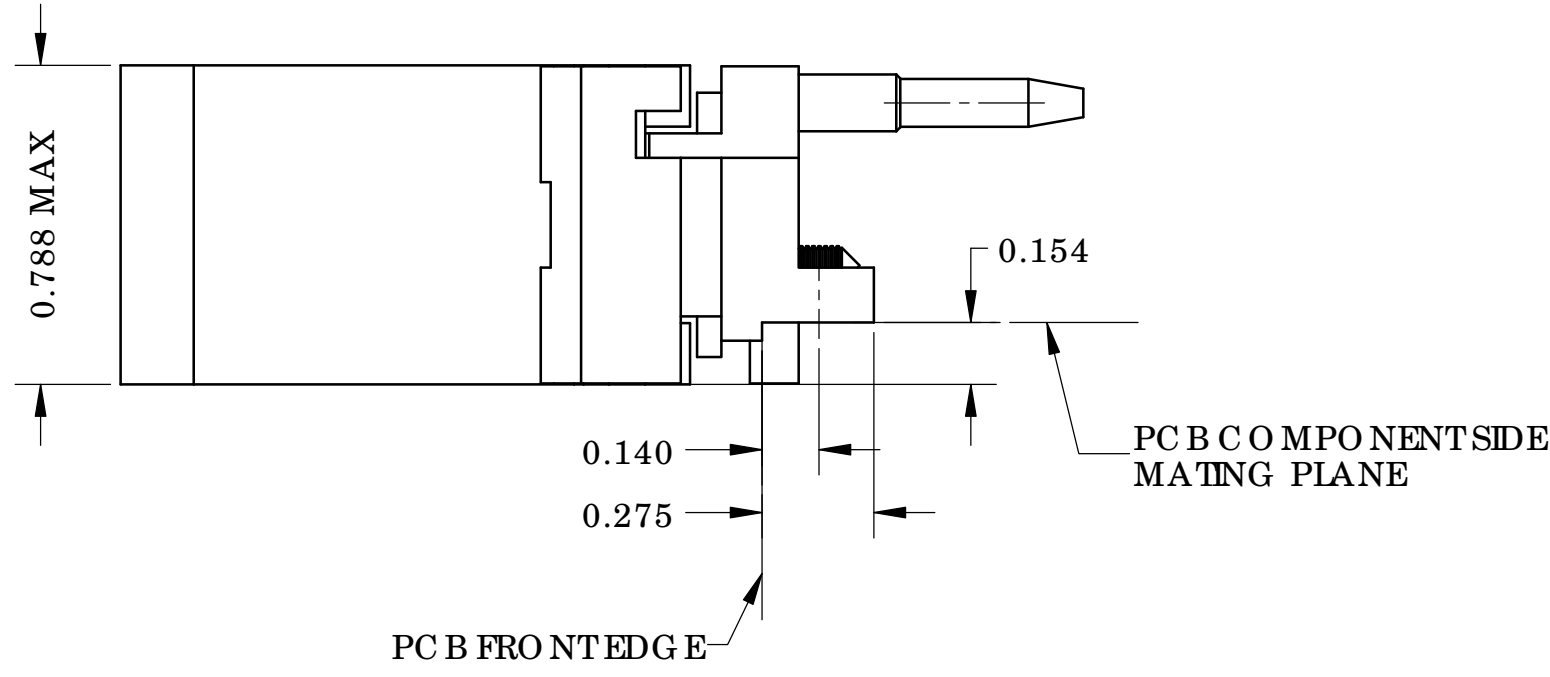
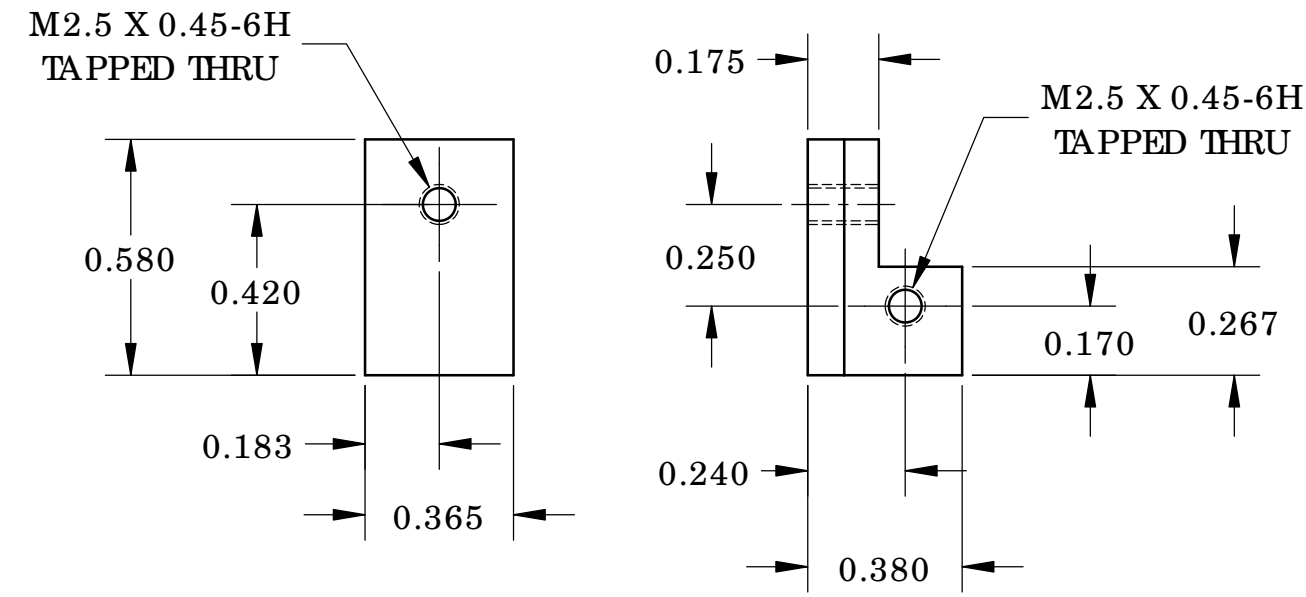
REVISIONS				
ZONE	REV	DESCRIPTION	DATE	APPROVED
ALL	A	INITIAL RELEASE	02/27/15	
ALL	B	ADDED P/N: 90100002 FOR RIM PANEL	09/19/17	



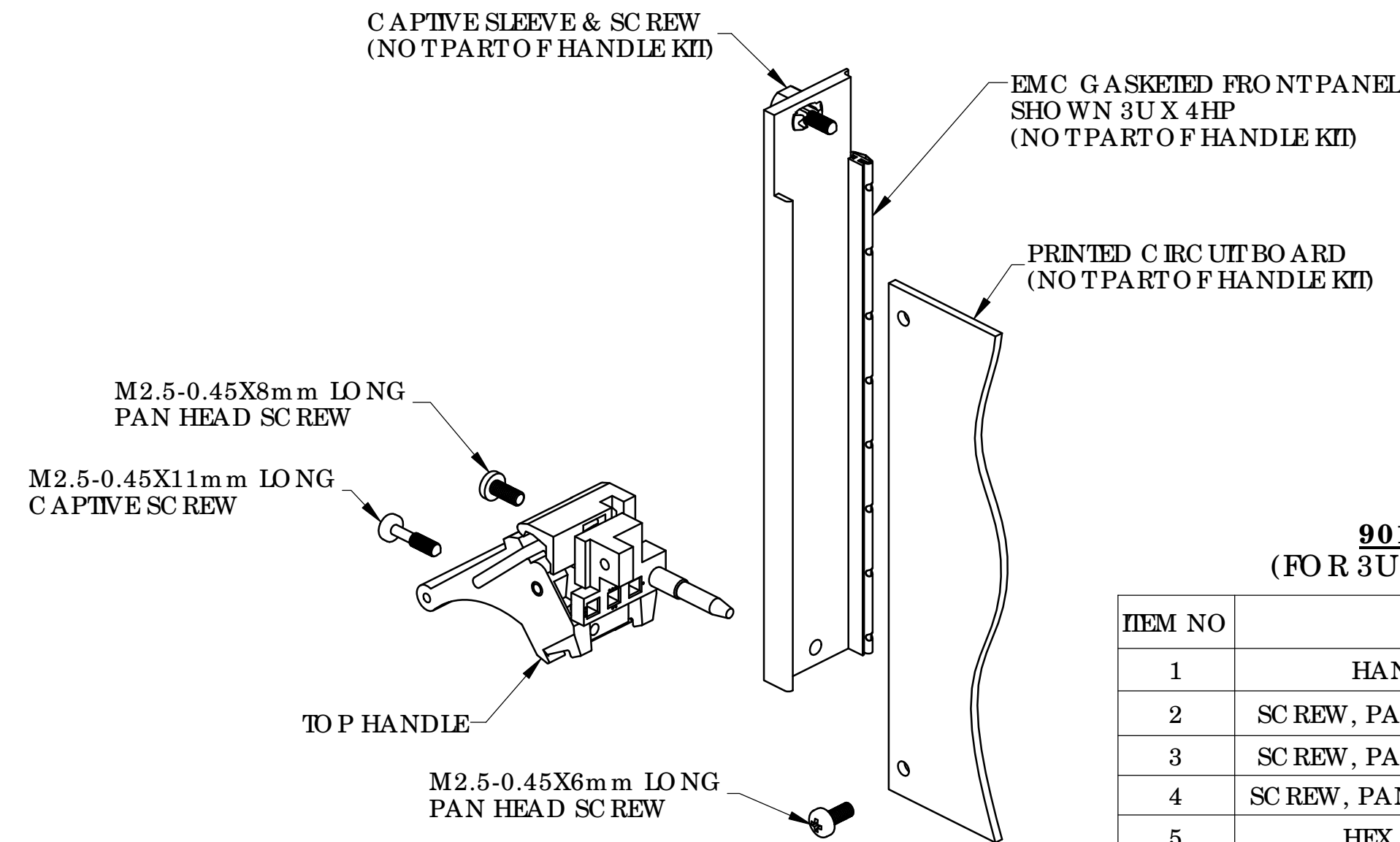
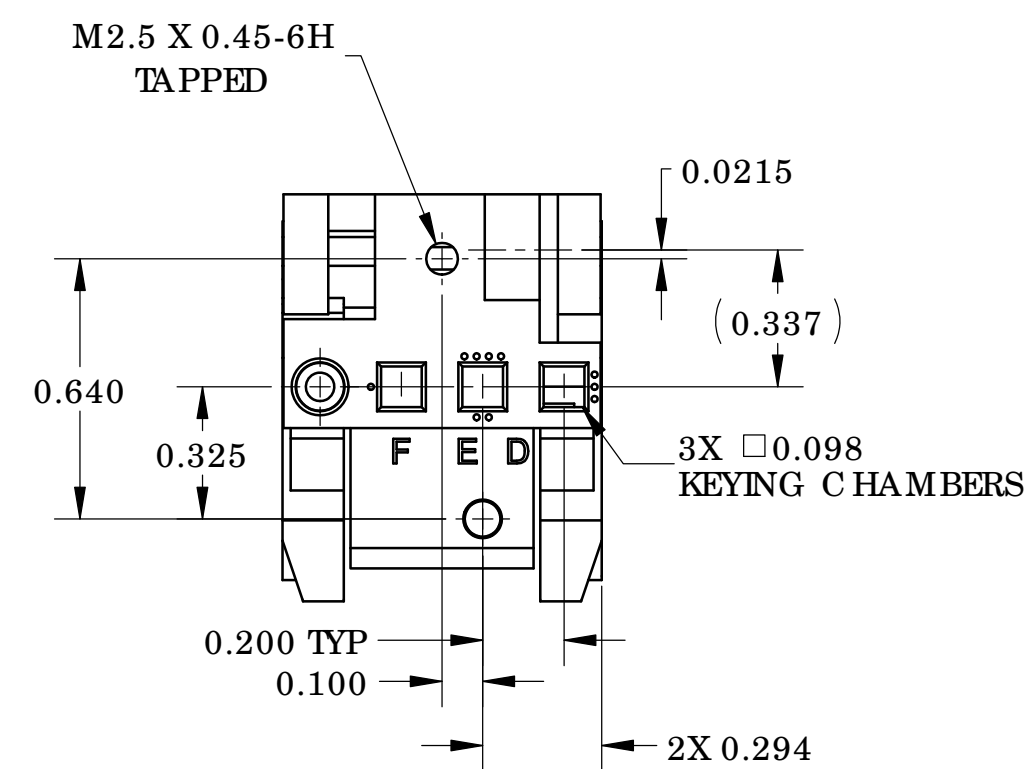
TOP HANDLE DETAIL



**L BRACKET DETAIL
 (PART OF 90100016)**



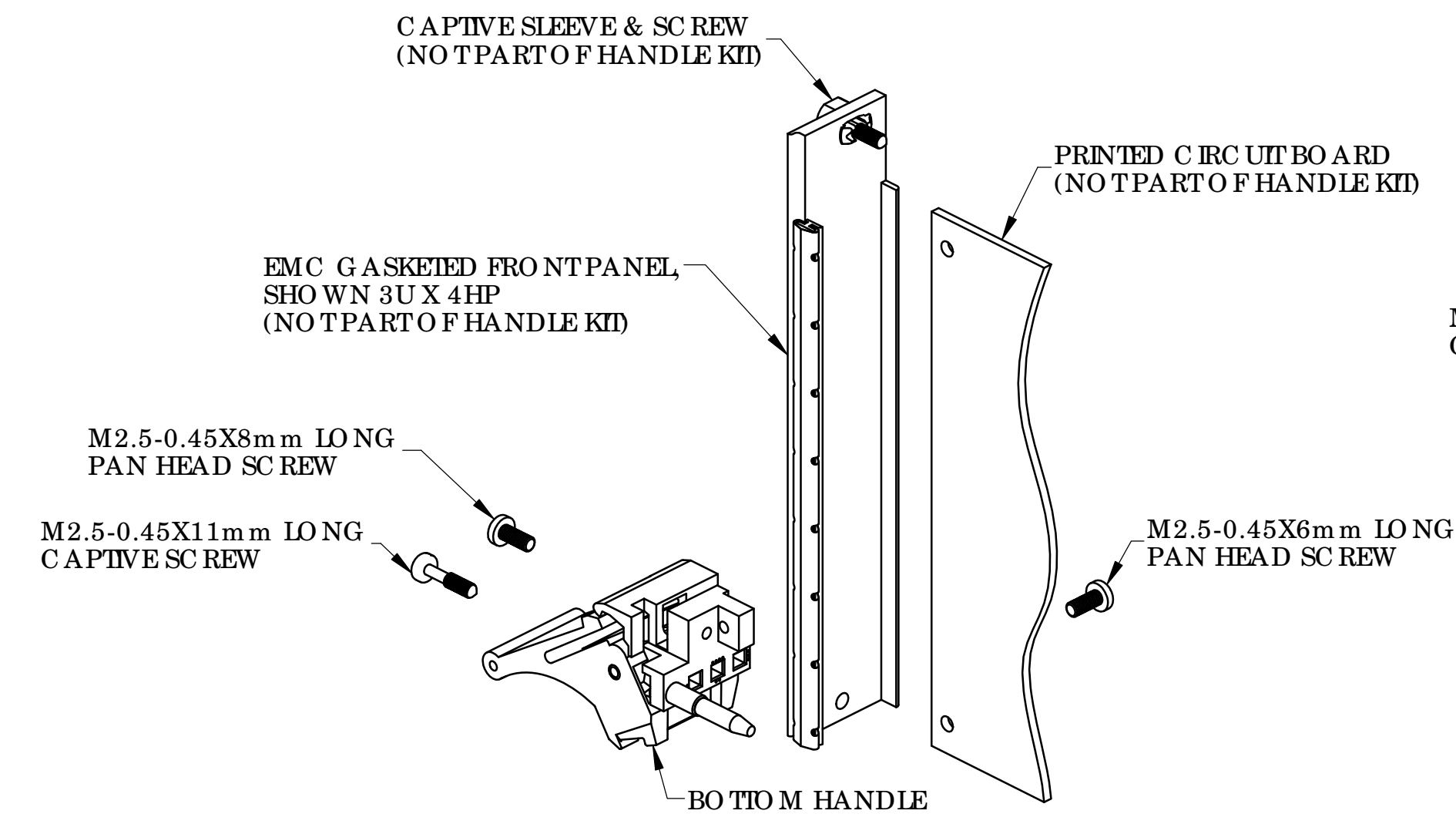
BOTTOM HANDLE DETAIL



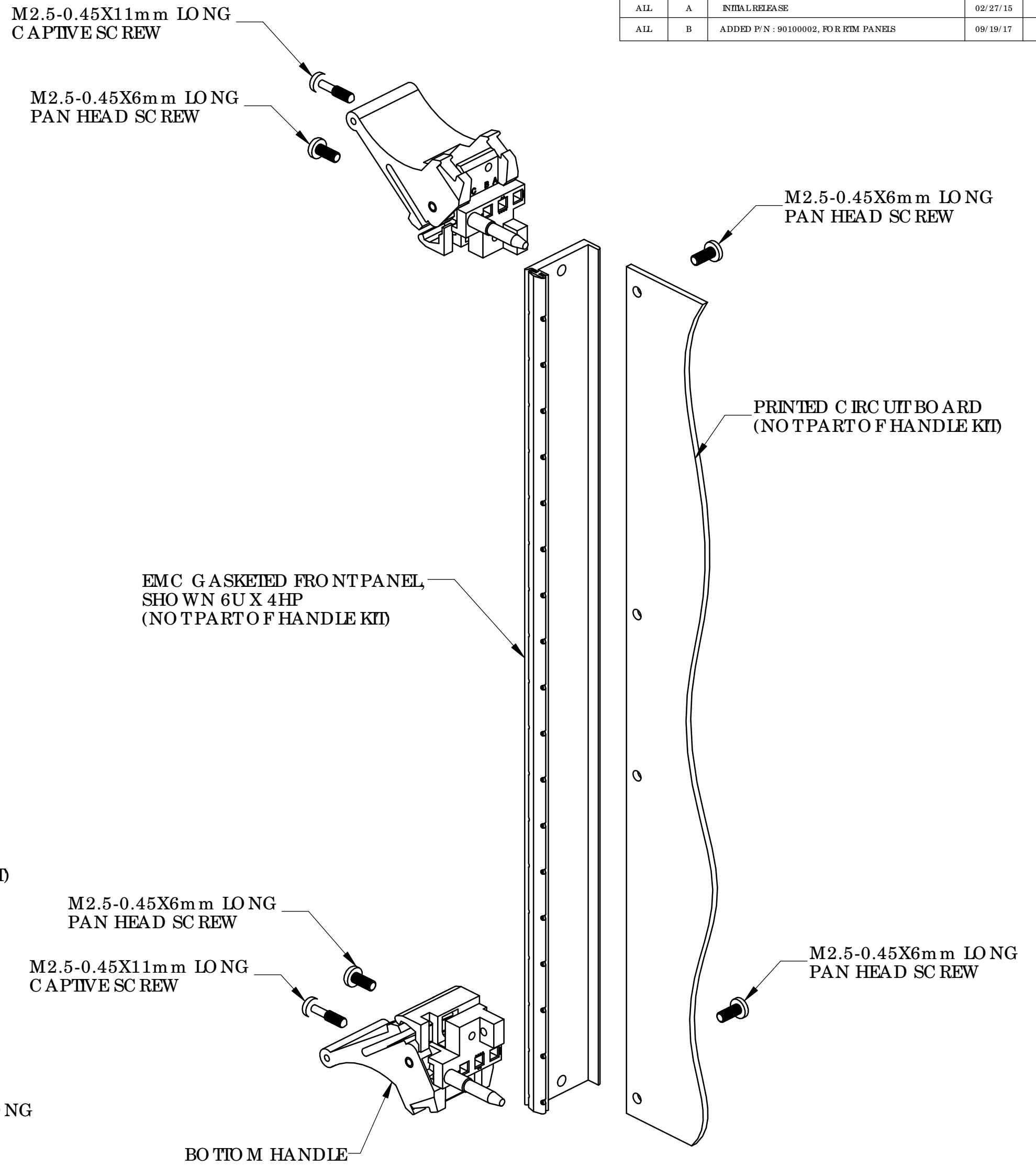
**EXPLODED VIEW
 3U RIM PLUG-IN CARD ASSEMBLY**

**90100002 PARIS LIST
 (FOR 3U RIM PANEL ASSEMBLY)**

ITEM NO	DESCRIPTION	QTY	U/M
1	HANDLE, TOP, TYPE IV	1	EACH
2	SCREW, PAN HEAD, M2.5-0.45X6mm	1	EACH
3	SCREW, PAN HEAD, M2.5-0.45X8mm	1	EACH
4	SCREW, PAN HEAD, M2.5-0.45X10mm	2	EACH
5	HEX NUT, M2.5X0.45-6H	2	EACH
6	SCREW, CAPTIVE, M2.5-0.45X11mm	2	EACH
7	WASHER, SPLIT LOCK, # 3	2	EACH



**EXPLODED VIEW
 3U FRONT PLUG-IN CARD ASSEMBLY**



**EXPLODED VIEW
 6U OR 9U PLUG-IN CARD ASSEMBLY**

**90100016 PARIS LIST
 (FOR 6U OR 9U FRONT PANEL ASSEMBLY)**

ITEM NO	DESCRIPTION	QTY	U/M
1	HANDLE, BOTTOM, TYPE IV	1	EACH
2	HANDLE, TOP, TYPE IV	1	EACH
3	L-BRACKET, METAL	1	EACH
4	SCREW, PAN HEAD, M2.5-0.45X6mm	5	EACH
5	SCREW, CAPTIVE, M2.5-0.45X11mm	2	EACH
6	SCREW, FLATHEAD, M2.5-0.45X8mm	1	EACH

**90100002-1 PARIS LIST
 (FOR 3U FRONT PANEL ASSEMBLY)**

ITEM NO	DESCRIPTION	QTY	U/M
1	HANDLE, BOTTOM, TYPE IV	1	EACH
2	SCREW, PAN HEAD, M2.5-0.45X6mm	1	EACH
3	SCREW, PAN HEAD, M2.5-0.45X8mm	1	EACH
4	SCREW, PAN HEAD, M2.5-0.45X10mm	2	EACH
5	HEX NUT, M2.5X0.45-6H	2	EACH
6	SCREW, CAPTIVE, M2.5-0.45X11mm	2	EACH
7	WASHER, SPLIT LOCK, # 3	2	EACH

UNLESS OTHERWISE SPECIFIED:
 DIMENSIONS ARE IN INCHES
 TOLERANCES:
 DEC. XXX ±0.1
 DEC. XXX ±0.03
 DEC. XXX ±0.010
 FRACTIONS ±0.050
 ANGLES ±1°
 THIRD ANGLE PROJECTION

NAME: DATE: 08/31/12
 DRAWN: BRESNAH
 CHECKED: ENG APPR: MFG APPR: Q.A. COMMENTS:

VECTOR ELECTRONICS & TECHNOLOGY, INC. www.vectornet.com
 1115 VANDERBYN NORTH HOLLYWOOD, CA 91655

**INJEC TO R/ EJEC TO R
 HANDLE, TYPE IV
 1101.10**

SIZE: DWG. NO. REV: **D IEL-TYPE-IV B**
 SCALE 1:1 | CAGE CODE: 82893 | SHEET 1 OF 1