



Chipsmall Limited consists of a professional team with an average of over 10 year of expertise in the distribution of electronic components. Based in Hongkong, we have already established firm and mutual-benefit business relationships with customers from,Europe,America and south Asia,supplying obsolete and hard-to-find components to meet their specific needs.

With the principle of “Quality Parts,Customers Priority,Honest Operation,and Considerate Service”,our business mainly focus on the distribution of electronic components. Line cards we deal with include Microchip,ALPS,ROHM,Xilinx,Pulse,ON,Everlight and Freescale. Main products comprise IC,Modules,Potentiometer,IC Socket,Relay,Connector.Our parts cover such applications as commercial,industrial, and automotives areas.

We are looking forward to setting up business relationship with you and hope to provide you with the best service and solution. Let us make a better world for our industry!



## Contact us

Tel: +86-755-8981 8866 Fax: +86-755-8427 6832

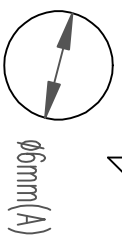
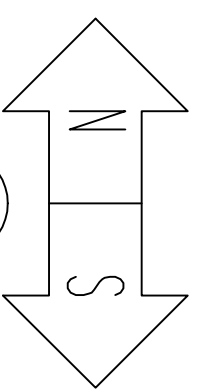
Email & Skype: info@chipsmall.com Web: www.chipsmall.com

Address: A1208, Overseas Decoration Building, #122 Zhenhua RD., Futian, Shenzhen, China

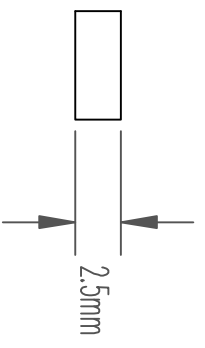


REVISIONS

LTR	DESCRIPTION	DATE	APPROVED
-	INITIAL RELEASE		H D



NOTES:  
100% SORTED WITH MAX 3° ANGLE  
DEVIATION



UNLESS OTHERWISE SPECIFIED  
DIMENSIONS ARE IN INCHES

TOLERANCES

FACTORS	±.04
DECIMALS	±.05
ANGLES	±1°

MATERIAL: 304SS

FINISH: NC/AN

**RADIAL MAGNET INC.**  
1083 NW 20th St. BOCA RATON, FL 33431 (561)992-2103

SHAPE	STRENGTH	PLATING	SIZE AND DIRECTION OF MAGNETIZATION(A)
DISC	N35	NICKEL PLATED	D 6mm(A) x 2.5mm

SIZE	ITEM #	DRAWING #	REVISION
A	992	RA992	-

SCALE	DRAWING CG	CHECKED	ED	APPROVED	ED	PAGE 1 OF 1
-------	------------	---------	----	----------	----	-------------