



Chipsmall Limited consists of a professional team with an average of over 10 year of expertise in the distribution of electronic components. Based in Hongkong, we have already established firm and mutual-benefit business relationships with customers from,Europe,America and south Asia,supplying obsolete and hard-to-find components to meet their specific needs.

With the principle of "Quality Parts,Customers Priority,Honest Operation,and Considerate Service",our business mainly focus on the distribution of electronic components. Line cards we deal with include Microchip,ALPS,ROHM,Xilinx,Pulse,ON,Everlight and Freescale. Main products comprise IC,Modules,Potentiometer,IC Socket,Relay,Connector.Our parts cover such applications as commercial,industrial, and automotives areas.

We are looking forward to setting up business relationship with you and hope to provide you with the best service and solution. Let us make a better world for our industry!



Contact us

Tel: +86-755-8981 8866 Fax: +86-755-8427 6832

Email & Skype: info@chipsmall.com Web: www.chipsmall.com

Address: A1208, Overseas Decoration Building, #122 Zhenhua RD., Futian, Shenzhen, China



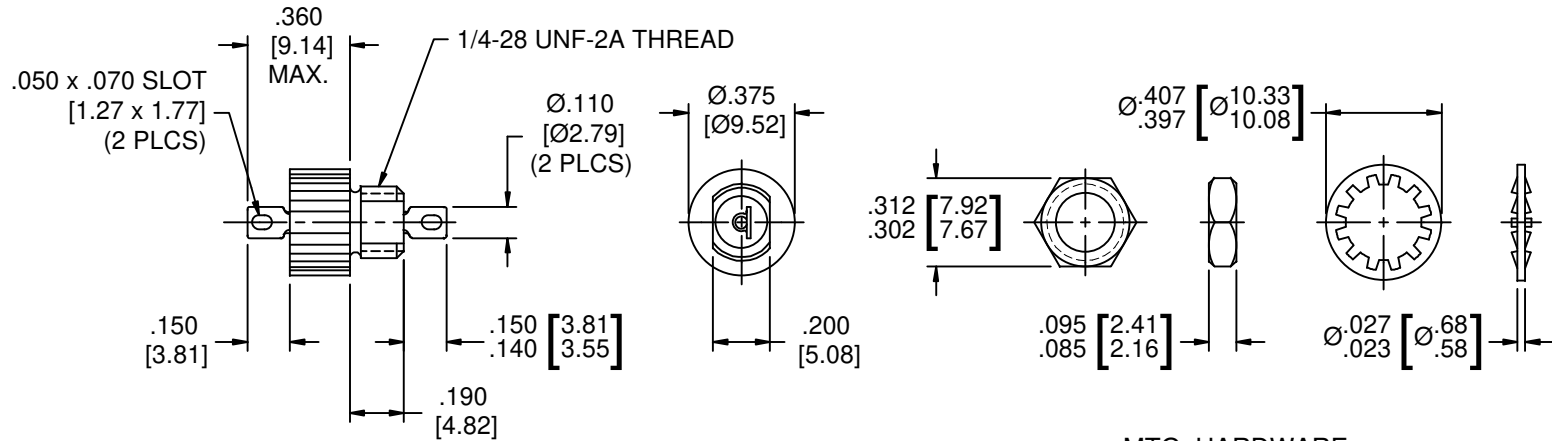
CASE FINISH	CURRENT (AMPS)	WORKING VOLTAGE				MAXIMUM DC RESISTANCE (OHMS)	MAXIMUM VOLTAGE DROP		MINIMUM CAPACITANCE (uF)	MIN. INSERTION LOSS PER MIL-STD-220, FULL LOAD, +25°C												
		-55°C to +85°C		-55°C to +125°C			DC	AC		14	30	50	75	100	150	300	500	1	10	100	1	10
		AC	DC	AC	DC					KHz	KHz	KHz	KHz	KHz	KHz	KHz	MHz	MHz	MHz	GHz	GHz	
SOLDER	15	---	100	---	70	0.005	0.075	---	0.7	--	10	--	--	20	24	30	--	40	52	70	70	--

PART MARKING:

9053-100-0008 (FAIRVIEW)
 9053-100-0008M (MEXICO)
 SCI DATE CODE

PACKAGE MARKING:

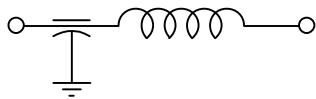
STANDARD



MARKING NOTES:

N/A

SCHEMATIC



NOTES:

1) MOUNTING TORQUE NOT TO EXCEED 7 in-lbs.

REV.	NO.	CHANGE NOTICE NO.	UNLESS OTHERWISE SPECIFIED DIMENSIONS ARE IN INCHES [MILLIMETERS] DO NOT SCALE	TOLERANCES UNLESS OTHERWISE SPECIFIED	SPECTRUM CONTROL INC.		FAIRVIEW PENNSYLVANIA
04	03			Dec. .x ± .x	Dwn. Hassett	Date 4-17-08	Description LOW PASS EMI FILTER
				Dec. .xx ± .xx			
				Dec. .xxx ± .010 [.25]	Engr. Devine		
				Angles ± 0° 30"	Sheet 1 of 1		9053-100-0008
				CODE IDENT. NO. 0LSP2			

