



Chipsmall Limited consists of a professional team with an average of over 10 year of expertise in the distribution of electronic components. Based in Hongkong, we have already established firm and mutual-benefit business relationships with customers from,Europe,America and south Asia,supplying obsolete and hard-to-find components to meet their specific needs.

With the principle of “Quality Parts,Customers Priority,Honest Operation,and Considerate Service”,our business mainly focus on the distribution of electronic components. Line cards we deal with include Microchip,ALPS,ROHM,Xilinx,Pulse,ON,Everlight and Freescale. Main products comprise IC,Modules,Potentiometer,IC Socket,Relay,Connector.Our parts cover such applications as commercial,industrial, and automotives areas.

We are looking forward to setting up business relationship with you and hope to provide you with the best service and solution. Let us make a better world for our industry!



Contact us

Tel: +86-755-8981 8866 Fax: +86-755-8427 6832

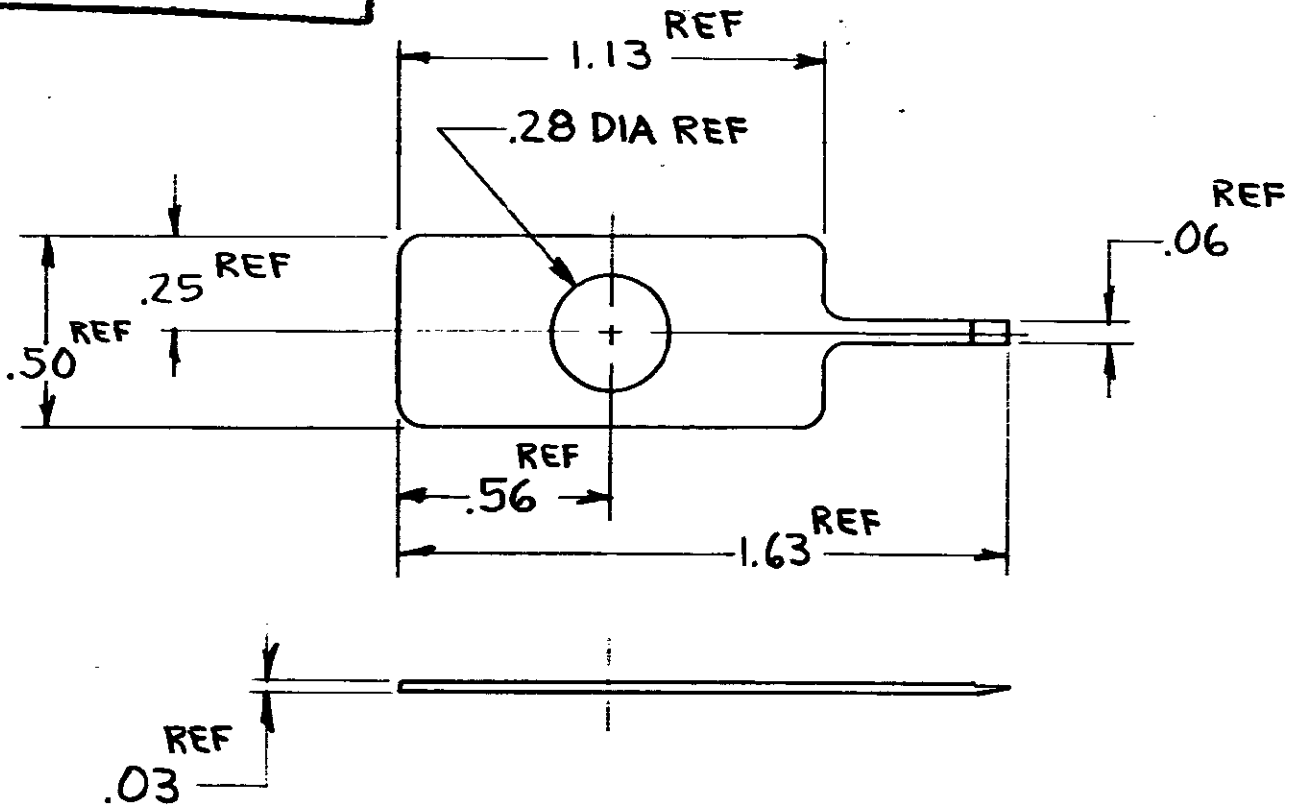
Email & Skype: info@chipsmall.com Web: www.chipsmall.com

Address: A1208, Overseas Decoration Building, #122 Zhenhua RD., Futian, Shenzhen, China



NUMBER 91003

© 1970 BY A-MP INCORPORATED
ALL RIGHTS RESERVED
A-MP PRODUCTS COVERED BY PATENTS
AND/OR PATENTS PENDING.



91003-1 AS SHOWN

MATERIAL CARBON STEEL		HEAT TREAT ~	COATING OR PLATING BLACK OXIDE
UNLESS OTHERWISE SPECIFIED } REMOVE SHARP, BREAK SHARP EDGES .015 R MAX DECIMALS: .00 = 2.00, .000 = 2.000, .0000 = 2.0000 ANGLES: 20° 30°		T	
PART USED 66661	WIRE RANGE AREA	CLASS SCALE 2:1	TYPE MIN. DUALATCH
OR Cliff Baker 7-8-70		A-MP AMP INCORPORATED HARRISBURG, PENNA.	
LOC M		NO 91003	REV A
DATE 7-8-70		NAME TOOL INSERTION EXTRACTION	

DIMENSIONS IN INCHES. DO NOT SCALE PRINT.

PRINT/DIST

H	LAC "M" WAS "S"	REV	RT	7-8-70	APP	US
O	RELEASED FOR COST.	~	CO	7-70		
LTR	REVISION RECORD	SEN	/	DATE	REL	