



Chipsmall Limited consists of a professional team with an average of over 10 year of expertise in the distribution of electronic components. Based in Hongkong, we have already established firm and mutual-benefit business relationships with customers from,Europe,America and south Asia,supplying obsolete and hard-to-find components to meet their specific needs.

With the principle of “Quality Parts,Customers Priority,Honest Operation,and Considerate Service”,our business mainly focus on the distribution of electronic components. Line cards we deal with include Microchip,ALPS,ROHM,Xilinx,Pulse,ON,Everlight and Freescale. Main products comprise IC,Modules,Potentiometer,IC Socket,Relay,Connector.Our parts cover such applications as commercial,industrial, and automotives areas.

We are looking forward to setting up business relationship with you and hope to provide you with the best service and solution. Let us make a better world for our industry!



Contact us

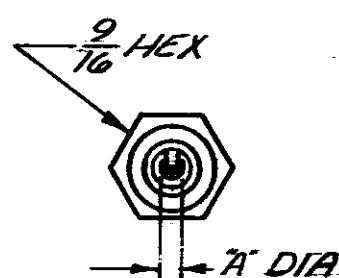
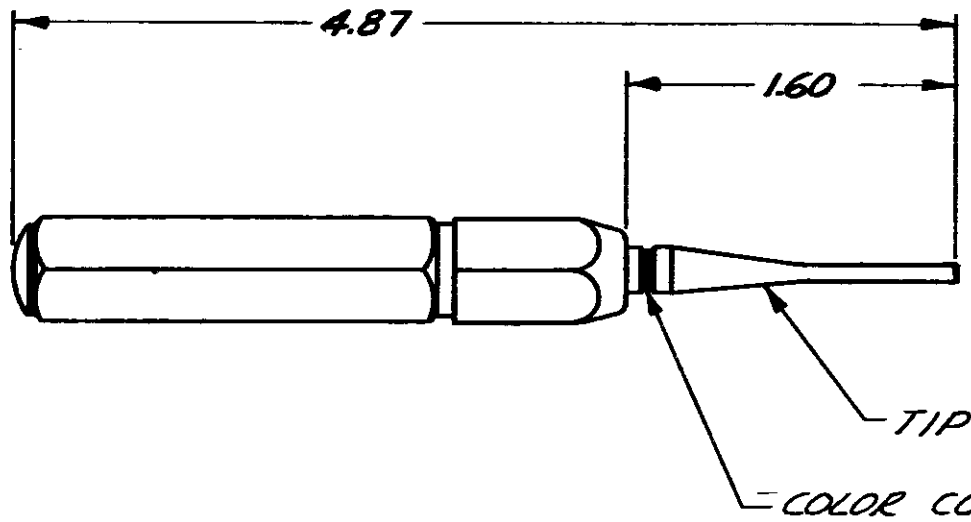
Tel: +86-755-8981 8866 Fax: +86-755-8427 6832

Email & Skype: info@chipsmall.com Web: www.chipsmall.com

Address: A1208, Overseas Decoration Building, #122 Zhenhua RD., Futian, Shenzhen, China



NUMBER
91039



TOOL NUMBER	TIP NUMBER	SIZE	COLOR CODE	A DIA
91039-1	126117-1	SUB 20	GREEN	.105
91039-3	126117-3	SIZE 16	BLUE	.144
91039-4	126117-4	SIZE 12	YELLOW	.189

NOTE:

- FOR CORRECT TOOL USAGE SEE INSTRUCTION SHEET IS 737

Not to be reproduced without written permission of AMP Incorporated

AMP INCORPORATED, ALL RIGHTS RESERVED. AMP PRODUCTS COVERED BY PATENTS AND/OR PATENTS PENDING.

CUSTOMER COPY
REFERENCE ONLY

MATERIAL AND FINISH				AMP INCORPORATED HARRISBURG, PENNA.			
AL & STEEL ANODIZED				CLASS H			
WIRE — RANGE — INSULATION — H — — H —				TYPE TYPE XI PIN & SOCKET			
TOLERANCE — DIMENSION AS SHOWN				SCALE 1:1			
LOC M				NO 91039			
REV C1				NAME			
LTR REVISION RECORD				DATE			
DR				CHK			
DATE				DATE			
APP				APP			

TOOL - INSERTION