



Chipsmall Limited consists of a professional team with an average of over 10 year of expertise in the distribution of electronic components. Based in Hongkong, we have already established firm and mutual-benefit business relationships with customers from,Europe,America and south Asia,supplying obsolete and hard-to-find components to meet their specific needs.

With the principle of “Quality Parts,Customers Priority,Honest Operation,and Considerate Service”,our business mainly focus on the distribution of electronic components. Line cards we deal with include Microchip,ALPS,ROHM,Xilinx,Pulse,ON,Everlight and Freescale. Main products comprise IC,Modules,Potentiometer,IC Socket,Relay,Connector.Our parts cover such applications as commercial,industrial, and automotives areas.

We are looking forward to setting up business relationship with you and hope to provide you with the best service and solution. Let us make a better world for our industry!



Contact us

Tel: +86-755-8981 8866 Fax: +86-755-8427 6832

Email & Skype: info@chipsmall.com Web: www.chipsmall.com

Address: A1208, Overseas Decoration Building, #122 Zhenhua RD., Futian, Shenzhen, China



910/911 Series Lampholders for 900/901 Cartridge Lamps

Overview

The 910 Series relampable lampholders accept any 900 Series cartridge lamp. These lampholders are of ruggedized construction and are supplied with mounting hardware.

Approvals

UL Recognized.

Specifications

Housing and Knurled Ring Nut: Aluminum. Black anodized finish standard. Clear anodized finish optional. Other finishes available on special request. A mounting wrench, #097013, is available for tightening the knurled ring nuts.

Hex Nut: Brass; nickel finish.

Internal Tooth Lockwasher: Nickel-plated finish.

Terminal Insulator: High dielectric composition.

Terminals: Solder cup, turret pin or solder lug.

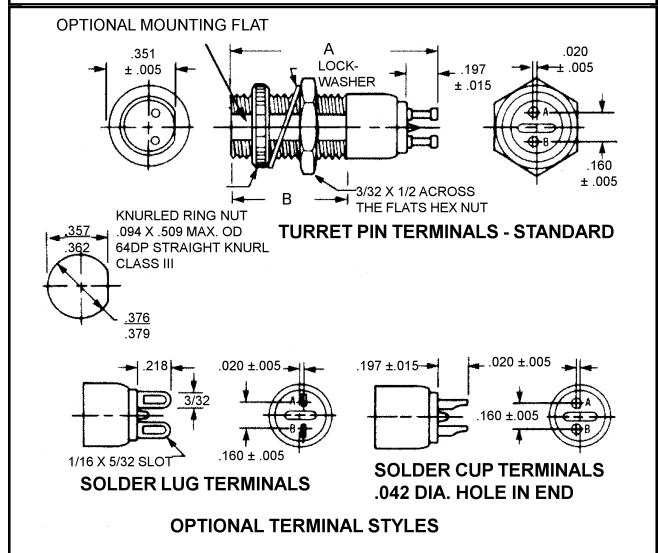
Socket: Brass. Bright nickel-plated.

Lens Cap: Heat resistant, high strength polycarbonate.

Lens Marking: Lens style 21 maybe be stamped.

Contact factory.

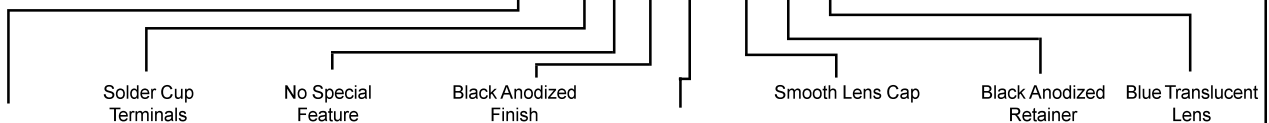
910 Series Maximum Rating: 3 Watts, 125 Volts.



Lampholder Body	Dimension in Inches	
	A	B
910	1.203 Max.	9/16
911	1.281 Max.	5/8

ORDERING INFORMATION:

EXAMPLE: 9 1 0 2 0 1 X 21 1 BT



Series Number	Cartridge Lampholders				Lens Caps and Collars		
	Termination	Features	Finish	Resistor	Lens Style	Retainer Finish	Lens Color
910	2 Solder Cup	0 None	1 Black Anodized - Standard	X None Required	21 Smooth Lens	1 Black Anodized	Nondiffusing (Clear)
	4 Solder Lug	1 D Hole Mounting			27 Fluted Lens (Nondiffusing Colors Only)		AN Amber
					23 ¹ Collar		BN ² Blue
					24 ¹ Collar		CN Colorless
						2 Clear (Silver) Anodized	GN ² Green
							RN Red
							WN White (Cloudy)
							YN Yellow

¹ No lens color specified. Use XX in lens color slot. Example: 901-201X-231XX.

² Use with blue or green neon lamps in the 911 series. Not for use with neon cartridge lamps in the 910 series.

³ Not recommended for use with neon cartridge lamps.