



Chipsmall Limited consists of a professional team with an average of over 10 year of expertise in the distribution of electronic components. Based in Hongkong, we have already established firm and mutual-benefit business relationships with customers from,Europe,America and south Asia,supplying obsolete and hard-to-find components to meet their specific needs.

With the principle of “Quality Parts,Customers Priority,Honest Operation,and Considerate Service”,our business mainly focus on the distribution of electronic components. Line cards we deal with include Microchip,ALPS,ROHM,Xilinx,Pulse,ON,Everlight and Freescale. Main products comprise IC,Modules,Potentiometer,IC Socket,Relay,Connector.Our parts cover such applications as commercial,industrial, and automotives areas.

We are looking forward to setting up business relationship with you and hope to provide you with the best service and solution. Let us make a better world for our industry!



## Contact us

Tel: +86-755-8981 8866 Fax: +86-755-8427 6832

Email & Skype: [info@chipsmall.com](mailto:info@chipsmall.com) Web: [www.chipsmall.com](http://www.chipsmall.com)

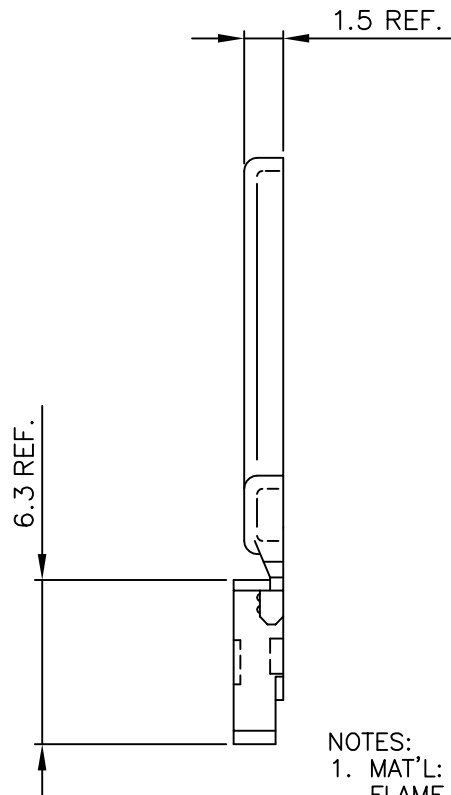
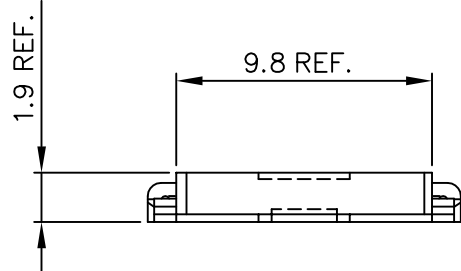
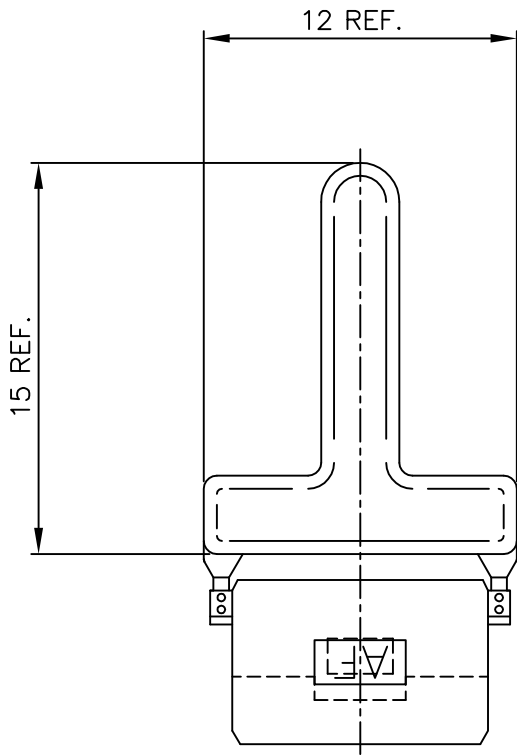
Address: A1208, Overseas Decoration Building, #122 Zhenhua RD., Futian, Shenzhen, China






Tous droits strictement réservés. Reproduction ou communication a des tiers interdite sous quelque forme que ce soit sans autorisation écrite du propriétaire.  
Property of FCI b.v.  
© FCI b.v.

Reproduction or issue to third parties in any form, whatever is not permitted without written authority from the proprietor.  
Property of FCI b.v.  
© FCI b.v.

PRODUCT NUMBER 91210-101LF



- NOTES:
1. MAT'L: LIQUID CRYSTAL POLYMER.  
FLAME RETARDANT ACC. UL 94-V0,  
30% GLASS FILLED, COLOR-GREEN.
  2. THIS PRODUCT WITH "LF" SUFFIX MEETS EUROPEAN  
UNION DIRECTIVES AND OTHER COUNTRY REGULATIONS AS  
DESCRIBED IN GS -22-008.
  3. THE PRODUCT IS NOT INTENDED TO BE EXPOSED TO A  
MANUFACTURING SOLDER PROCESS.

mat'l. code SEE NOTE 1				tolerances unless otherwise specified			CUSTOMER COPY		 <b>ELECTRONICS</b> www.fciconnect.com		
ltr	ecn	no	dr	date	linear			projection 	title <b>BLOCKING KEY RECEPTACLE</b>		
A	V31645	SCS	930830								
B	V41309	RDO	940729								
C	H40388	RV	940810	angles					product family <b>CENTRAL (tm)</b> size dwg no <b>91210</b>		
D	H40583	DDB	940916	dr	E. de Bil	940609					
E	605-0383	CLU	051011	eng	E. Feijen	940729					
					chr	G.S. Lee	940609	scale 5:1	sheet 1 of 1		
					app	G.S. Lee	940609				
sheet index	revision sheet	E	1								