



Chipsmall Limited consists of a professional team with an average of over 10 year of expertise in the distribution of electronic components. Based in Hongkong, we have already established firm and mutual-benefit business relationships with customers from,Europe,America and south Asia,supplying obsolete and hard-to-find components to meet their specific needs.

With the principle of "Quality Parts,Customers Priority,Honest Operation,and Considerate Service",our business mainly focus on the distribution of electronic components. Line cards we deal with include Microchip,ALPS,ROHM,Xilinx,Pulse,ON,Everlight and Freescale. Main products comprise IC,Modules,Potentiometer,IC Socket,Relay,Connector.Our parts cover such applications as commercial,industrial, and automotives areas.

We are looking forward to setting up business relationship with you and hope to provide you with the best service and solution. Let us make a better world for our industry!



## Contact us

Tel: +86-755-8981 8866 Fax: +86-755-8427 6832

Email & Skype: info@chipsmall.com Web: www.chipsmall.com

Address: A1208, Overseas Decoration Building, #122 Zhenhua RD., Futian, Shenzhen, China



# STACKABLE PANEL MOUNT FUSE HOLDER

with Wire Leads for ATO® Style Blade Fuse



## Description

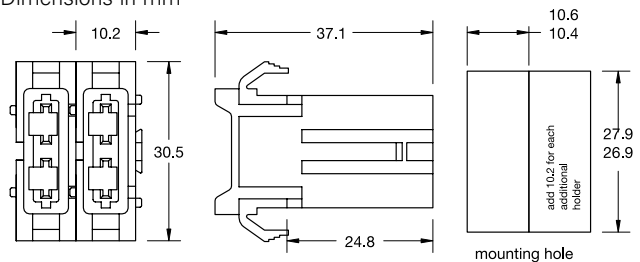
Intended for use with 32V ATO®/ FKS Fuses rated up to 20A or 30A.

## Ordering Information

Part Number	Package Size
01550xxxLXN	50
01550xxxZ	100

## Dimensions

Dimensions in mm



## Ratings

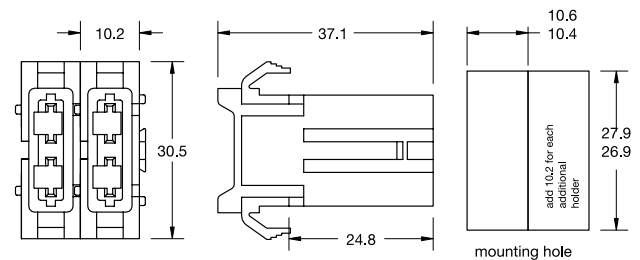
Part Number	Description	Fuse Rating
01550300_	14AWG/2.1mm <sup>2</sup> stranded black wire	20 A
01550400_	10AWG/5.3mm <sup>2</sup> stranded orange wire	30 A

# ATO® PANEL MOUNT HOLDER COMPONENTS



## Dimensions

Dimensions in mm



## Ratings

Part Number	Description	Fuse Rating
868-062-000	Housing only, color black - 2700 pcs.	-
913-008	Reeled Terminals A, wire 14AWG/2.1mm <sup>2</sup> -2000 pcs.	20A
913-008-001	Singe Terminals A, wire 14AWG/2.1mm <sup>2</sup> -1000 pcs.	20A
913-007	Reeled Terminals B, wire 10AWG/5.3mm <sup>2</sup> - 2000 pcs.	30A
913-007-001	Singe Terminals B, wire 10AWG/5.3mm <sup>2</sup> -1000 pcs.	30A