



Chipsmall Limited consists of a professional team with an average of over 10 year of expertise in the distribution of electronic components. Based in Hongkong, we have already established firm and mutual-benefit business relationships with customers from,Europe,America and south Asia,supplying obsolete and hard-to-find components to meet their specific needs.

With the principle of “Quality Parts,Customers Priority,Honest Operation,and Considerate Service”,our business mainly focus on the distribution of electronic components. Line cards we deal with include Microchip,ALPS,ROHM,Xilinx,Pulse,ON,Everlight and Freescale. Main products comprise IC,Modules,Potentiometer,IC Socket,Relay,Connector.Our parts cover such applications as commercial,industrial, and automotives areas.

We are looking forward to setting up business relationship with you and hope to provide you with the best service and solution. Let us make a better world for our industry!



Contact us

Tel: +86-755-8981 8866 Fax: +86-755-8427 6832

Email & Skype: info@chipsmall.com Web: www.chipsmall.com

Address: A1208, Overseas Decoration Building, #122 Zhenhua RD., Futian, Shenzhen, China



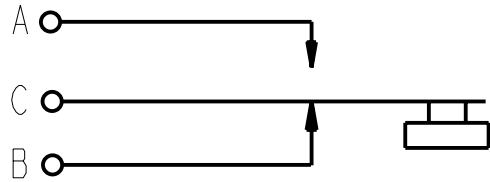
PART NUMBER	PART REV.	BUTTON COLOR	SCHEMATIC
903X	A	RED	I-C
903DX	A	RED	I-D
913X	A	BLACK	I-C
913DX	A	BLACK	I-D

NOTES:

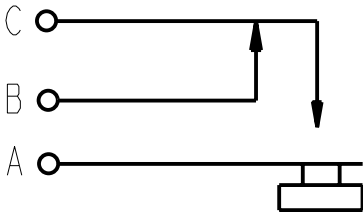
- 1. WHITE DOT DESIGNATES "I-D SCHEMATIC".
- 2. HEX NUT AND LOCKWASHER ARE SHIPPED UNASSEMBLED.
- 3. ALL DIMENSIONS ARE REFERENCE.
- 4. THESE PRODUCTS ARE RoHS COMPLIANT.

SPECIFICATIONS:

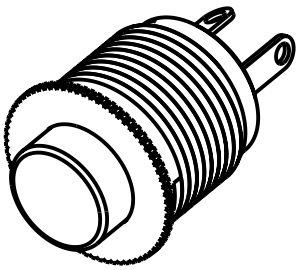
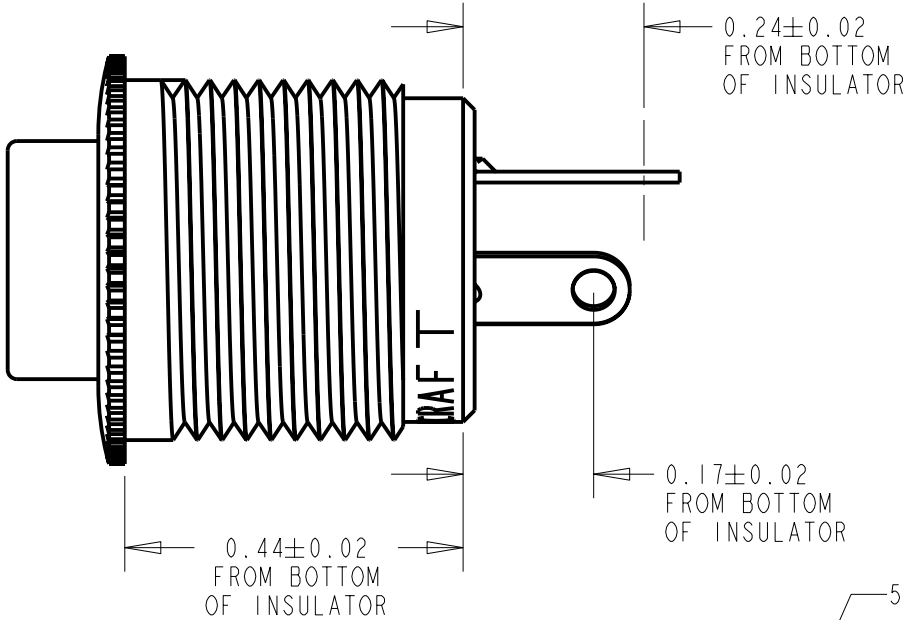
- 1. PUSHBUTTON - PLASTIC, SEE TABLE FOR COLOR
- 2. HOUSING - BRASS, NICKEL PLATED
- 3. TERMINALS - BRASS, SILVER PLATED
- 4. CONTACTORS - BRASS, SILVER PLATED
- 5. INSULATORS - PHENOLIC
- 6. SPRING - SILVER PLATED
- 7. HEX NUT - BRASS, NICKEL PLATED
- 8. WASHER - STEEL, NICKEL PLATED



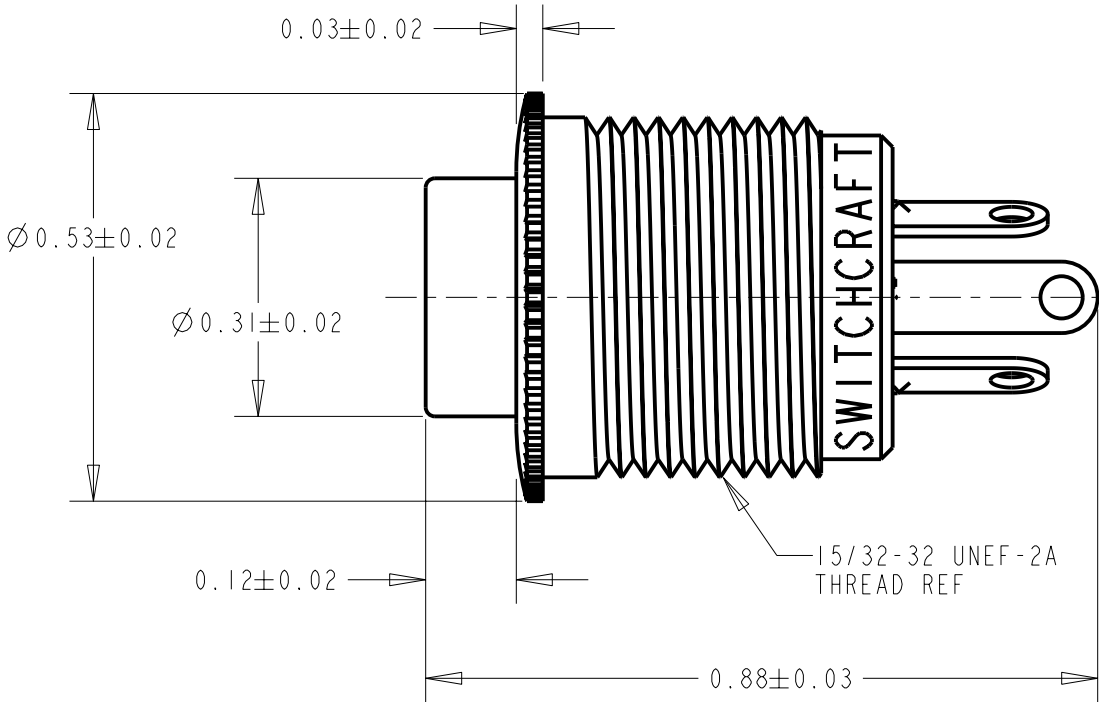
903X & 913X
SCHEMATIC
I-C



903DX & 913DX
SCHEMATIC
I-D



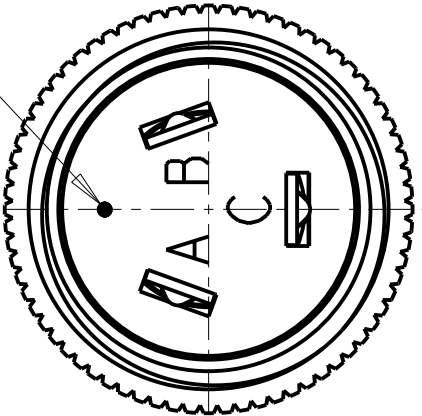
SCALE 2:1



5/8 O.D. INT. LOCKWASHER

15/32-32 HEX NUT 1/16 THICK

WHITE DOT
SEE NOTE 1



CUSTOMER DRAWING

					★ STAR SYMBOL DENOTES CRITICAL DIMENSION	THIS DRAWING DESCRIBES A DESIGN CONSIDERED PROPRIETARY IN NATURE, DEVELOPED AND MANUFACTURED BY SWITCHCRAFT INC. AND IS RELEASED ON A CONFIDENTIAL BASIS FOR IDENTIFICATION PURPOSES ONLY.						
					UNLESS OTHERWISE SPECIFIED 1. ALL DIMENSIONS IN INCHES -TWO PLACE DECIMALS ±0.01 -THREE PLACE DECIMALS ±0.005 -ANGLES ±1° -ALL DIA. CONCENTRIC WITHIN 0.005 T.I.R. 2. FEATURES ON THE SAME CENTERLINE MUST BE ALIGNED WITHIN ±0.002 3. REMOVE ALL BURRS	SIZE	WIDTH	MULT	LBS/M	TEMPER		
						FINISH			MATERIAL			
						SPEC No.			SPEC No.			
						FIRST USED ON		SCALE 4:1		Switchcraft®		
						DATE DRAWN	BY	CHKD	APVD			
A	ECO #25286	1-18-07	TJK	TJK		18-Jan-07	TJK	TJK 1-18-07	TJK 1-18-07	SHEET OF		
REV	ECO NUMBER	DATE	BY	APVD		NAME			PART No. 903X & 913X 903DX & 913DX			REV A
REVISIONS					DO NOT SCALE DRAWING	BUTTON SWITCH, RoHS						