



Chipsmall Limited consists of a professional team with an average of over 10 year of expertise in the distribution of electronic components. Based in Hongkong, we have already established firm and mutual-benefit business relationships with customers from,Europe,America and south Asia,supplying obsolete and hard-to-find components to meet their specific needs.

With the principle of “Quality Parts,Customers Priority,Honest Operation,and Considerate Service”,our business mainly focus on the distribution of electronic components. Line cards we deal with include Microchip,ALPS,ROHM,Xilinx,Pulse,ON,Everlight and Freescale. Main products comprise IC,Modules,Potentiometer,IC Socket,Relay,Connector.Our parts cover such applications as commercial,industrial, and automotives areas.

We are looking forward to setting up business relationship with you and hope to provide you with the best service and solution. Let us make a better world for our industry!



Contact us

Tel: +86-755-8981 8866 Fax: +86-755-8427 6832

Email & Skype: info@chipsmall.com Web: www.chipsmall.com

Address: A1208, Overseas Decoration Building, #122 Zhenhua RD., Futian, Shenzhen, China



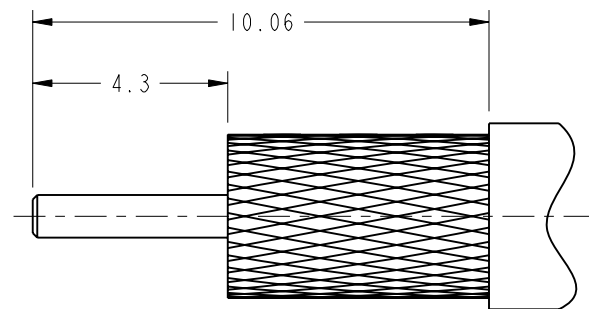
NOTES:

1. MATERIALS AND FINISHES:
 - BODY - BERYLLIUM COPPER, WHITE BRONZE PLATING OVER SILVER
 - REAR BODY - BRASS, WHITE BRONZE PLATING OVER SILVER
 - CONTACT - BERYLLIUM COPPER, GOLD PLATING OVER HIGH PHOSPHORUS ELECTROLESS NICKEL
 - INSULATORS - PTFE
 - CAP - BRASS, WHITE BRONZE PLATING OVER SILVER
2. ELECTRICAL:
 - A. IMPEDANCE: 50 OHM
 - B. FREQUENCY RANGE: DC - 2.4 GHz
 - C. VSWR(RETURN LOSS): 1.2 MAX.
 - D. DIELECTRIC WITHSTANDING VOLTAGE: 1000 VRMS, MIN.
 - E. PIM: -155dBc MAX. @ 700 MHz - 2100MHz
3. MECHANICAL:
 - A. DURABILITY: 100 CYCLES MIN.
 - B. TEMPERATURE RANGE: -65° C TO 165° C
4. CABLE ENTRY DIMENSIONS
5. ASSEMBLY INSTRUCTIONS
 - A. STRIP CABLE TO DIMENSIONS SHOWN
 - B. FULLY INSERT CABLE INTO THE CONNECTOR.
 - C. SOLDER CABLE CENTER CONDUCTOR TO CONTACT
 - D. SOLDER CABLE TO CONNECTOR BODY
 - E. PRESS CAP INTO POSITION AND DIMPLE SLIGHTLY.
4. PACKAGING:
 - A. QUANTITY: SINGLE PACK
 - B. MARKING: BAG TO BE MARKED "AMPHENOL RF, 915-1001, AND DATE CODE"

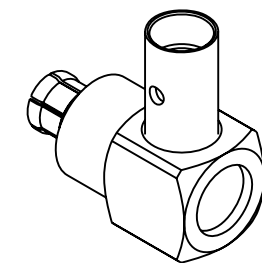
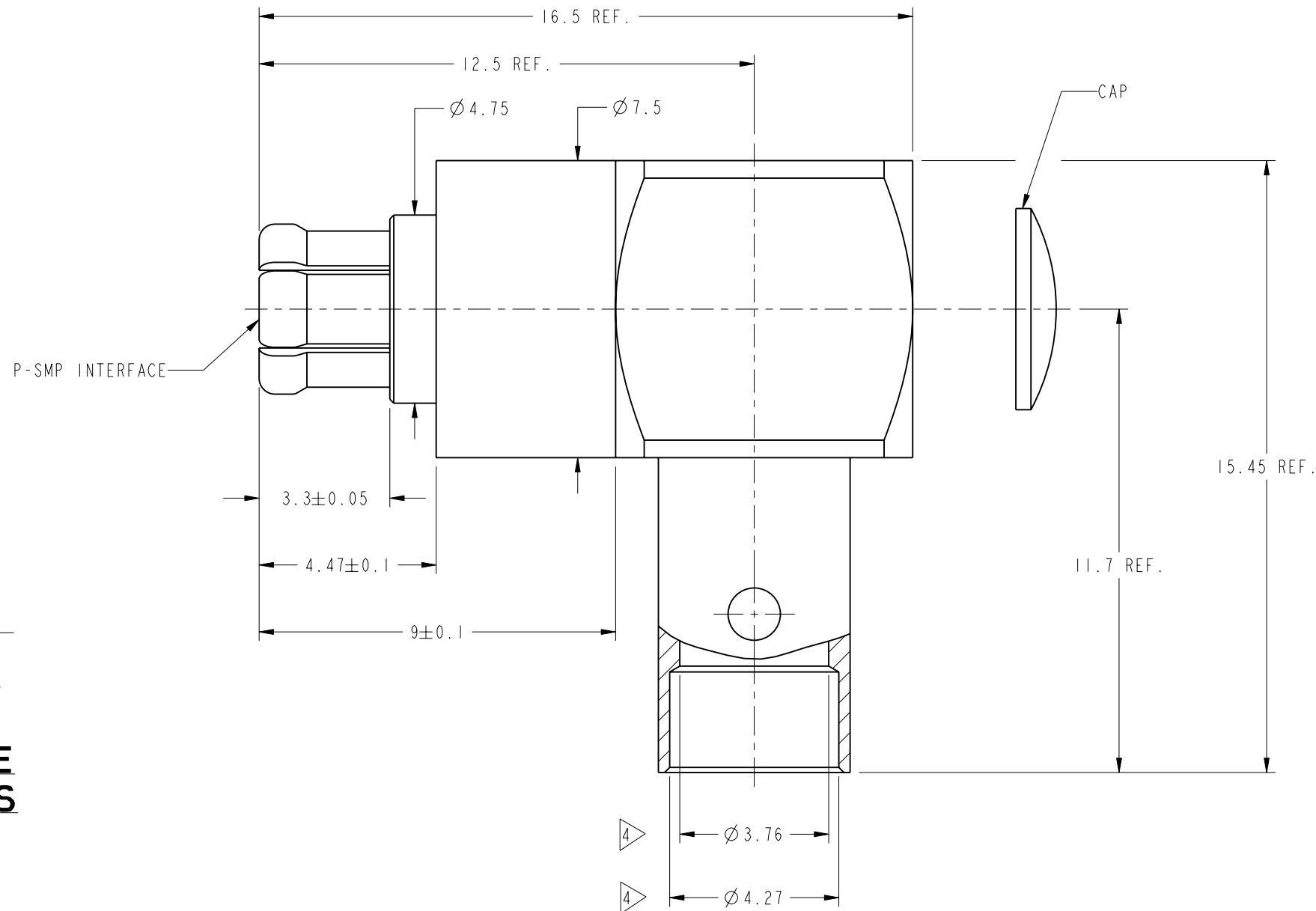
THIRD ANGLE PROJ.

REVISIONS

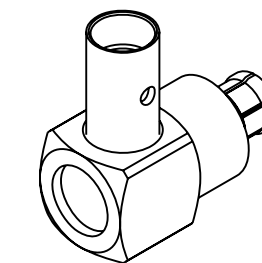
REV	DESCRIPTION	DATE	ECO	APPR
A	RELEASE TO MFG.	17-Jul-14	50108	JYL



RECOMMENDED CABLE STRIPPING DIMENSIONS



SCALE 2.000



SCALE 2.000

CUSTOMER OUTLINE DRAWING

ALL OTHER SHEETS ARE FOR INTERNAL USE ONLY

UNLESS OTHERWISE SPECIFIED, DIMENSIONS ARE IN METRIC AND TOLERANCES ARE: <0.5mm ±0.05mm 0.5 - 6mm ±0.1mm 6 - 30mm ±0.2mm 30 - 120mm ±0.3mm ANGLES ±1°	MATERIAL	DRAWN R. SHANG	DATE 17-Jul-14	TITLE P-SMP RA JACK HABIA FLEXIFORM 402 NM FJ	Amphenol RF www.amphenolrf.com
	REFERENCE EAR # 5868 AND	ENGINEER JIA YONG LI	DATE 11-Aug-13		
NOTICE - These drawings, specifications, or other data (1) are, and remain the property of Amphenol corp. (2) must be returned upon request; and (3) are confidential and not to be disclosed to any person other than those to whom they are given by Amphenol Corp. the furnishing of these drawings, specifications, or other data by Amphenol Corp., or to any other person to anyone for any purpose is not to be regarded by implication or otherwise in any manner licensing, granting rights to permitting such holder or any other person to manufacture, use or sell any product, process or design, patented or otherwise, that may in any way be related to or disclosed by said drawings, specifications, or other data.	CONFIGURATION LEVEL: <input type="checkbox"/> <input type="checkbox"/> <input type="checkbox"/> <input type="checkbox"/>	APPROVED S. HSIEH	DATE 22-Jul-14	SCALE: 10.0:1.0 SHEET 2 OF 2	ITEM NO. 915-1001
	FINISH	CAD FILE	DWG SIZE B	REV A	PART NO. 915-1001