



Chipsmall Limited consists of a professional team with an average of over 10 year of expertise in the distribution of electronic components. Based in Hongkong, we have already established firm and mutual-benefit business relationships with customers from,Europe,America and south Asia,supplying obsolete and hard-to-find components to meet their specific needs.

With the principle of "Quality Parts,Customers Priority,Honest Operation,and Considerate Service",our business mainly focus on the distribution of electronic components. Line cards we deal with include Microchip,ALPS,ROHM,Xilinx,Pulse,ON,Everlight and Freescale. Main products comprise IC,Modules,Potentiometer,IC Socket,Relay,Connector.Our parts cover such applications as commercial,industrial, and automotives areas.

We are looking forward to setting up business relationship with you and hope to provide you with the best service and solution. Let us make a better world for our industry!



Contact us

Tel: +86-755-8981 8866 Fax: +86-755-8427 6832

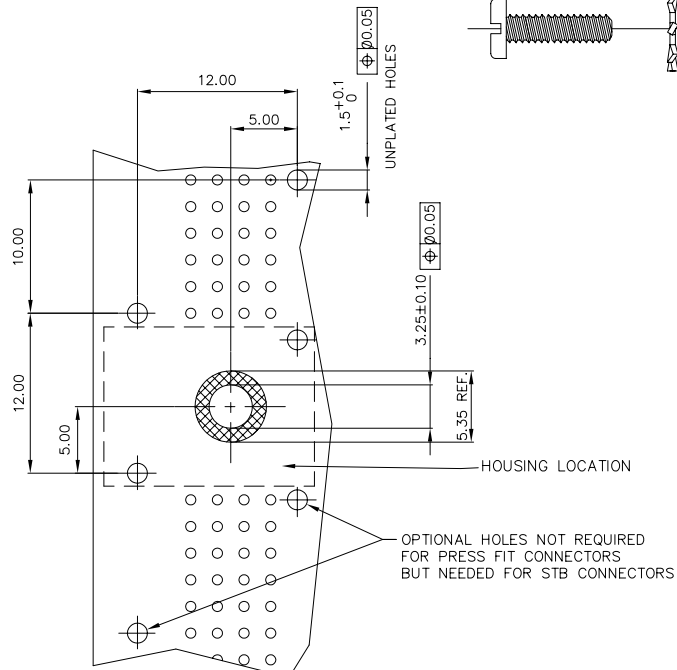
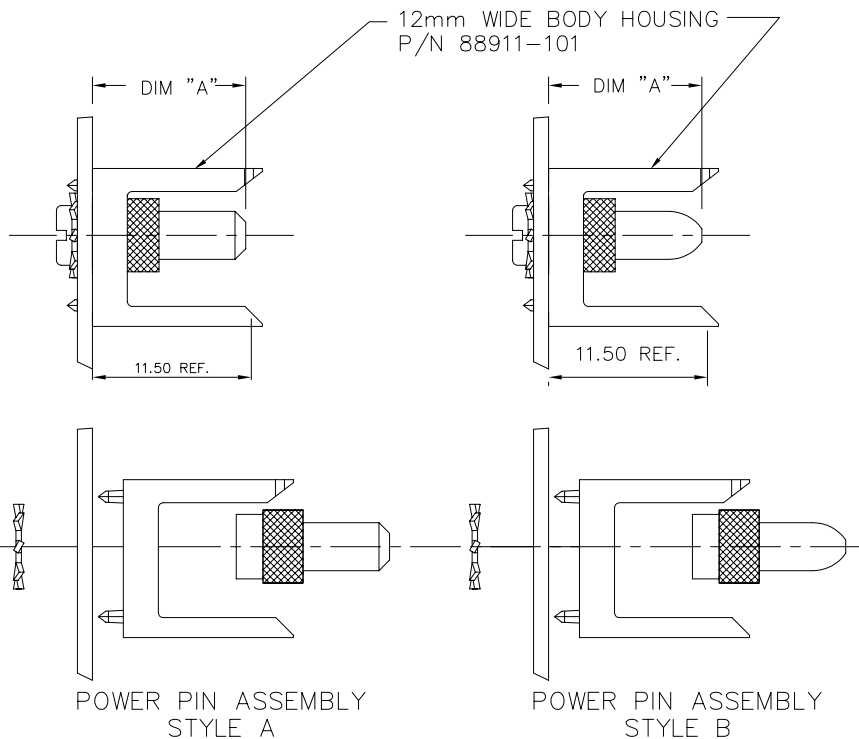
Email & Skype: info@chipsmall.com Web: www.chipsmall.com

Address: A1208, Overseas Decoration Building, #122 Zhenhua RD., Futian, Shenzhen, China



PRODUCT NUMBER
SEE TABLE--SHEET 2

-0YY	COMES WITH A BRASS SLOTTED PAN HEAD SCREW W/NICKEL PLATING	NOTE 4
-1YY	COMES WITH A STAINLESS STEEL COMBO PAN HEAD SCREW	NOTE 2



RECOMMENDED HOLE PATTERN
COMPONENT SIDE

mat'l. code		surface ISO 1302 ✓		tolerance ISO 406 ISO 1101		projection mm		product family METRAL ACC.	
ltr	ecn	no	dr	date		tolerances unless otherwise specified		title	
J	v94312	MDF	11/04/99	angles	linear	xx ±.01/3	POWER PIN ASSEMBLY		
K	v94406	HTB	12/01/99	σ±2'	linear	xxx ±.005/.13	12 mm		
L	v00746	LSS	3/06/00			xxxx ±.0020/.050	scale 1:1		
M	v01293	JWS	6/01/00	dr	STU STONER	12/12/91	dwg no		
N	v12634	EPK	11/09/01	enr	R. DOUTRICH	12/12/91	sheet 1 of 2		
P	M05-0202	MHT	9/23/05	chr	STU STONER	12/12/91	size		
R	M06-0286	MNR	7/27/06	app	STU STONER	12/12/91	A3		
sheet		revisor		R	R	type		Product Customer Drawing	
index	sheet	1	2						

PRODUCT NUMBER	DIM "A"±0.10	SCREW LENGTH	PIN TIP	NOTES	LEAD FREE OPTION
91570-X01	11.50	7.92	STYLE A		NOTE 5
91570-X02	32.00	7.92	STYLE A	NOTE 3	
91570-X03	13.00	7.92	STYLE A	NOTE 3	
91570-X04	14.50	7.92	STYLE A	NOTE 3	
91570-X05	16.00	7.92	STYLE A	NOTE 3	
91570-X06	24.00	7.92	STYLE A	NOTE 3	
91570-X07	28.90	7.92	STYLE A	NOTE 3	
91570-X08	32.00	12.70	STYLE A	NOTE 3	
91570-X09	14.50	12.70	STYLE A	NOTE 3	
91570-X10	16.00	12.70	STYLE A	NOTE 3	
91570-X11	11.50	12.70	STYLE A		
91570-X12	32.00	12.70	STYLE B	NOTE 3	
91570-X13	14.50	12.70	STYLE B	NOTE 3	
91570-X14	11.50	12.70	STYLE B		
91570-X15	32.00	7.92	STYLE B	NOTE 3	
91570-X16	14.50	7.92	STYLE B	NOTE 3	
91570-X17	16.00	7.92	STYLE B	NOTE 3	
91570-X18	24.00	7.92	STYLE B	NOTE 3	
91570-X19	16.00	12.70	STYLE B	NOTE 3	
91570-X20	11.50	7.92	STYLE B		
91570-X21	28.90	7.92	STYLE B	NOTE 3	
91570-X22	13.00	7.92	STYLE B	NOTE 3	

NOTE 5

NOTES:

- HOUSING SHOWN FOR APPLICATION CLARITY AND DOES NOT COME WITH POWER PINS AND PAN HEAD SCREWS
- TORQUE RATING FOR #4 STAINLESS STEEL COMBO PAN HEAD SCREW TO BE 5 IN/LBS. MAX
- MUST BE USED WITH THE METRAL(tm) PASS-THRU POWER CONTACT P.N. 91877
- TORQUE RATING FOR #4 BRASS SLOTTED PAN HEAD SCREW TO BE 3.75 IN/LBS. MAX.
- ADD "LF" SUFFIX AT THE END OF PART NUMBER FOR LEAD FREE OPTION.
- THIS PRODUCT MEETS EUROPEAN UNION DIRECTIVES AND OTHER COUNTRY REGULATION AS DESCRIBED IN GS-22-008.

-0YY	COMES WITH A BRASS SLOTTED PAN HEAD SCREW W/NICKEL PLATING	NOTE 4
-1YY	COMES WITH A STAINLESS STEEL COMBO PAN HEAD SCREW	NOTE 2

mat'l. code		surface ISO 1302 ✓	tolerance ISO 406 ISO 1101	projection 	product family METRAL ACC.
ltr	ecn	no	dr	date	tolerances unless otherwise specified
R					angles linear xx ±.01/.3 xxx ±.005/.13 xxxx ±.0020/.050
					scale 1:1
			dr	STU STONER	12/12/91
			enfr	R. DOUTRICH	12/12/91
			chr	STU STONER	12/12/91
			appd	STU STONER	12/12/91
sheet index	revision sheet				
				title POWER PIN ASSEMBLY 12 mm	dwg no 91570
				scale 1:1	sheet 2 of 2 A3
				type Product Customer Drawing	



Copyright FCI