



Chipsmall Limited consists of a professional team with an average of over 10 year of expertise in the distribution of electronic components. Based in Hongkong, we have already established firm and mutual-benefit business relationships with customers from,Europe,America and south Asia,supplying obsolete and hard-to-find components to meet their specific needs.

With the principle of “Quality Parts,Customers Priority,Honest Operation,and Considerate Service”,our business mainly focus on the distribution of electronic components. Line cards we deal with include Microchip,ALPS,ROHM,Xilinx,Pulse,ON,Everlight and Freescale. Main products comprise IC,Modules,Potentiometer,IC Socket,Relay,Connector.Our parts cover such applications as commercial,industrial, and automotives areas.

We are looking forward to setting up business relationship with you and hope to provide you with the best service and solution. Let us make a better world for our industry!



Contact us

Tel: +86-755-8981 8866 Fax: +86-755-8427 6832

Email & Skype: info@chipsmall.com Web: www.chipsmall.com

Address: A1208, Overseas Decoration Building, #122 Zhenhua RD., Futian, Shenzhen, China

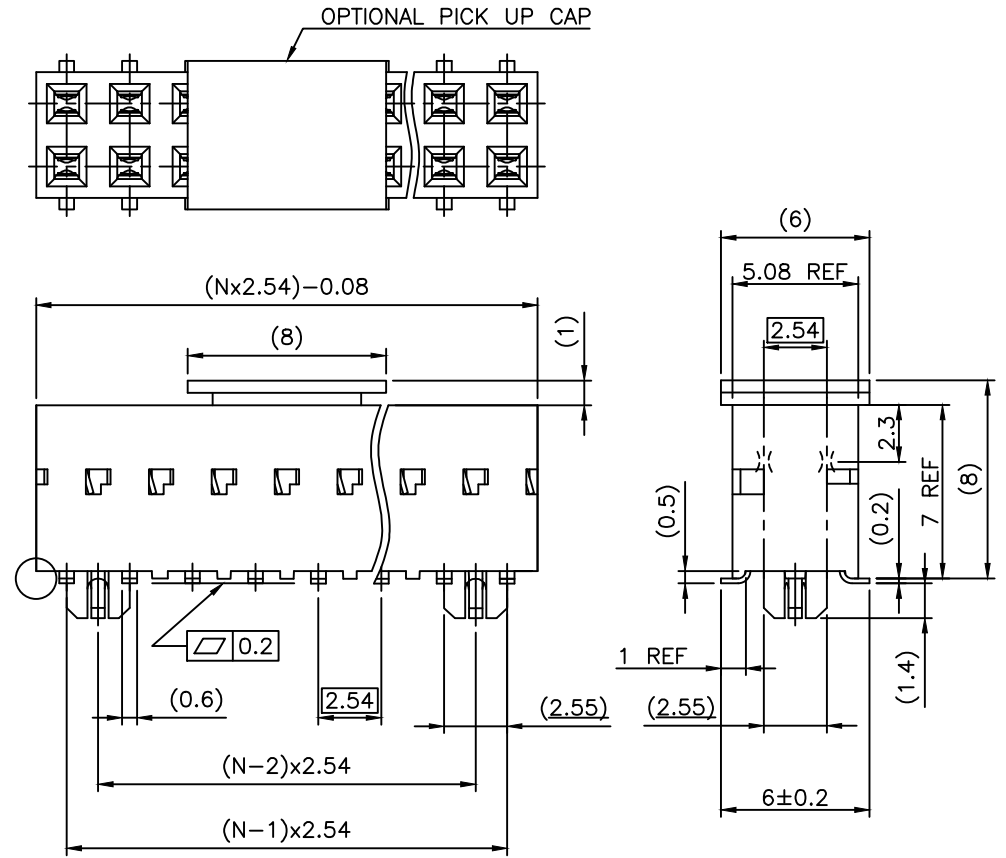


PRODUCT NUMBER
91618-YXXZLF

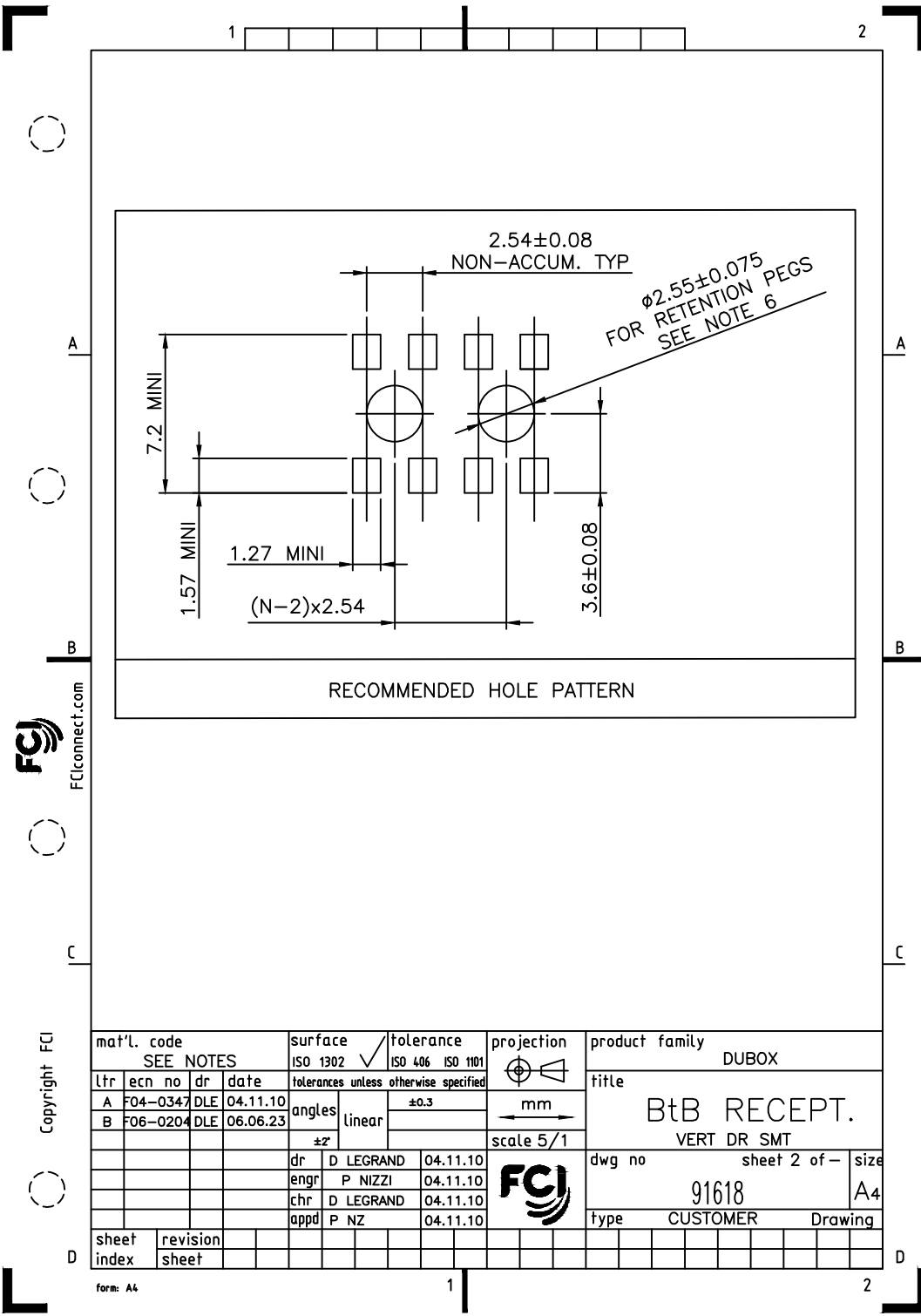
- RoHS COMPATIBLE, SEE NOTE 7
- A: PRODUCT WITH PICK UP CAP PACKED IN TAPE & REEL SEE TA856.
- B: PRODUCT WITH PICK UP CAP PACKED IN TUBE.
- NUMBER OF POSITIONS PER ROW: 06 UP TO 30. MORE THAN 30 POSITIONS ON SPECIAL REQUEST.
- 3= 0.76µm GOLD ON CONTACT AREA.
2µm MIN MATTE TIN ON TAIL.
- 4= 2µm TIN FULL PLATED
- 8= 0.38µm GOLD ON CONTACT AREA.
2µm MIN MATTE TIN ON TAIL.
- 1.27µm Ni MIN UNDERPLATING

NOTES:

- 1 - HOUSING MAT'L: THERMOPLASTIC GLASS FILLED FLAME RETARDANT PER UL 94 V-0 COLOR: GREY.
- 2 - TERMINAL MATERIAL: PHOSPHOR BRONZE.
- 3 - 06 UP TO 30 POSITIONS PRODUCT PACKED IN TUBE.
- 4 - TO DETERMINE DIMENSIONS:
N = NUMBER OF POSITIONS PER ROW
EXAMPLE: 8 POS: $(N \times 2.54) - 0.08 = 20.24$ mm.
- 5 - RECOMMENDED IR PROFILE PER TA842.
- 6 - Ø2.65 MINI FOR PICK & PLACE ASSEMBLY(=0 INSERTION FORCE).
- 7 - RoHS COMPATIBLE PRODUCT SPECIFICATIONS
 - a - PLATING:
 - "LF" MEANS THE PRODUCT IS LEAD-FREE, 2µm MINIMUM MATTE TIN OVER 1.27µm MINIMUM NICKEL UNDERPLATE.
 - b - MANUFACTURING PROCESS COMPATIBILITY
 - THE HOUSING WILL WITHSTAND EXPOSURE TO 260°C PEAK TEMPERATURE FOR 30 SECONDS MAX IN A CONVECTION, INFRA-RED OR VAPOR PHASE OR REFLOW OVEN.
 - c - LABELING:
 - MEETS PACKAGING SPECS AS PER GS-14-920
 - d - LEGAL STATEMENT: SEE GS-47-0004
- 8 - NO END STAND-OFFS



mat'l. code SEE NOTES		surface ISO 1302 ✓		tolerance ISO 406 ISO 1101		projection mm		product family DUBOX	
ltr	ecn no	dr	date	tolerances unless otherwise specified		mm		title	
W	F-21499	AMA	15.07.23	angles	linear	±0.3		BtB RECEIPT.	
R	F04-0347	DLE	04.11.10	±2°		scale 5/1		VERT DR SMT	
S	F06-0137	DLE	06.02.27	dr	D LEGRAND	02.10.08	FCJ	dwg no	
T	F06-0204	DLE	06.06.23	enr	P NIZZI	02.10.08		sheet 1 of 2	
U	F11-0043	JCO	12.02.22	chr	JF NOTTEAU	02.10.08		size	
V	B-19123	LMU	14.10.21	appd	P NZ	02.10.08		A3	
sheet		revision		W	B			type	
index		sheet		1	2			CUSTOMER Drawing	



FCJ
FCIconnect.com

Copyright FCI

mat'l. code SEE NOTES				surface ISO 1302 ✓	tolerance ISO 406 ISO 1101	projection ⊕	product family DUBOX	
ltr	ecn no	dr	date	tolerances unless otherwise specified		mm ←→	title	
A	F04-0347	DLE	04.11.10	angles	linear		BtB RECEIPT.	
B	F06-0204	DLE	06.06.23	±2'		scale 5/1	VERT DR SMT	
		dr	D LEGRAND	04.11.10		FCJ	dwg no	
		enr	P NIZZI	04.11.10			sheet 2 of - size	
		chr	D LEGRAND	04.11.10			91618 A4	
		appd	P NZ	04.11.10			type CUSTOMER Drawing	
sheet index	revision sheet							

form: A4