



Chipsmall Limited consists of a professional team with an average of over 10 year of expertise in the distribution of electronic components. Based in Hongkong, we have already established firm and mutual-benefit business relationships with customers from,Europe,America and south Asia,supplying obsolete and hard-to-find components to meet their specific needs.

With the principle of "Quality Parts,Customers Priority,Honest Operation,and Considerate Service",our business mainly focus on the distribution of electronic components. Line cards we deal with include Microchip,ALPS,ROHM,Xilinx,Pulse,ON,Everlight and Freescale. Main products comprise IC,Modules,Potentiometer,IC Socket,Relay,Connector.Our parts cover such applications as commercial,industrial, and automotives areas.

We are looking forward to setting up business relationship with you and hope to provide you with the best service and solution. Let us make a better world for our industry!



## Contact us

Tel: +86-755-8981 8866 Fax: +86-755-8427 6832

Email & Skype: info@chipsmall.com Web: www.chipsmall.com

Address: A1208, Overseas Decoration Building, #122 Zhenhua RD., Futian, Shenzhen, China



# SURFBOARDS®



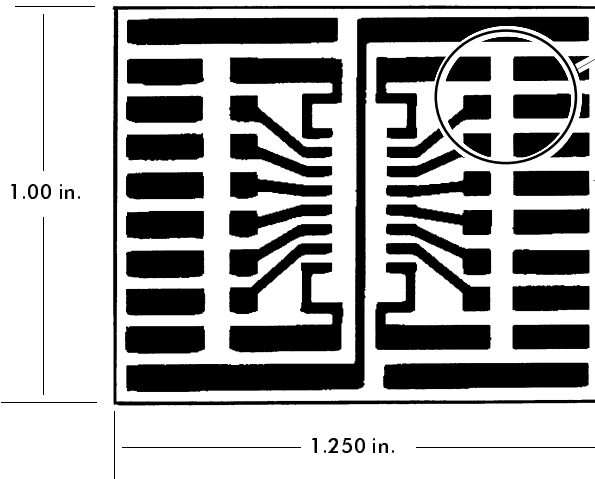
THE BREADBOARDING MEDIUM FOR SURFACE MOUNT™

## 9000 SERIES FOR I.C.s

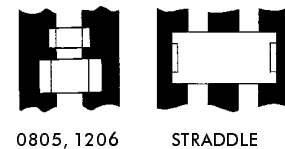
IDS9162A 3-9-99

MODEL **9162**

ACCEPTS ONE 14 OR 16-PIN S.O.I.C.  
OR TWO 8-PIN SOICs  
LARGER PERIPHERAL BREADBOARDING AREA



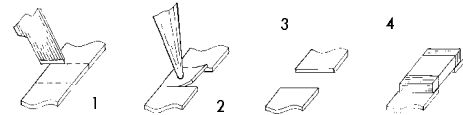
I.C. pins fan out to peripheral part mounting areas capable of accepting several surface mount devices



### FOIL MODIFICATIONS EXPAND VERSATILITY

Typical of many Surfboards are large pad areas which may be modified to create additional part mounting zones or expand layout or connection options.

- 1: Score foil with sharp razor to define new zone.
- 2: Apply heat with iron to delaminate foil section.
- 3: New mounting zone has been created.
- 4: Solder component to new mounting zone.



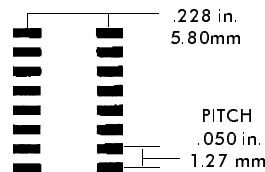
Similar to model 9161 but with more peripheral breadboarding area. Mount 0805, 1206, Mini-Melf, A-Tantalums, and a wide variety of surface mount 2-terminal devices within size range above including LEDs, Inductors, Diodes, Crystals, and more. The large circuit lands provide plenty of configuration options. See foil modifications (at right) for more information.

NEED SMD BREADBOARDS FOR SOICs THAT WILL PLUG INTO SOLDERLESS BREADBOARDS AND SOCKETS?

SEE MODELS

9081, 9163, 9164, AND 9165

**I.C. FOOTPRINT**  
accepts one 14 or 16-pin SOIC,  
or two 8-pin SOICs.



### BOARD SPECIFICATIONS

**BOARD MATERIAL:** .031+-.005 In. Thick G-10 FR-4 Glass Epoxy or equivalent.  
**CIRCUITS:** 1oz Copper with solder coated pads.  
**TOLERANCES:** Given in inches  
Board Size +-.020 / OAL+-.040  
Circuit pattern/position +-.005

Copyright 1997, 1999 by Capital Advanced Technologies, Inc. All rights reserved. Surfboards Are a registered trademark of Capital Advanced technologies, Inc. All other trademarks or registered trademarks are property of their respective owners. Availability, specifications, and prices are subject to change without notice. All information given is believed to be accurate but is not guaranteed. The user of information given or products represented by such information is responsible for determining the suitability of said information or products for a given purpose.

**CAPITAL ADVANCED TECHNOLOGIES, INC.**

CAROL STREAM, ILLINOIS. USA.

PHONE 630-690-1696 WWW.CapitalAdvanced.Com FAX-ON-DEMAND 630-690-2865