



Chipsmall Limited consists of a professional team with an average of over 10 year of expertise in the distribution of electronic components. Based in Hongkong, we have already established firm and mutual-benefit business relationships with customers from,Europe,America and south Asia,supplying obsolete and hard-to-find components to meet their specific needs.

With the principle of "Quality Parts,Customers Priority,Honest Operation,and Considerate Service",our business mainly focus on the distribution of electronic components. Line cards we deal with include Microchip,ALPS,ROHM,Xilinx,Pulse,ON,Everlight and Freescale. Main products comprise IC,Modules,Potentiometer,IC Socket,Relay,Connector.Our parts cover such applications as commercial,industrial, and automotives areas.

We are looking forward to setting up business relationship with you and hope to provide you with the best service and solution. Let us make a better world for our industry!



Contact us

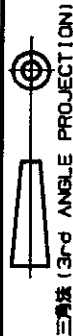
Tel: +86-755-8981 8866 Fax: +86-755-8427 6832

Email & Skype: info@chipsmall.com Web: www.chipsmall.com

Address: A1208, Overseas Decoration Building, #122 Zhenhua RD., Futian, Shenzhen, China



NUMBER C-917706

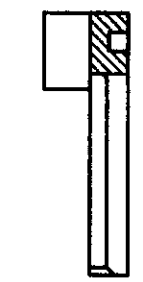
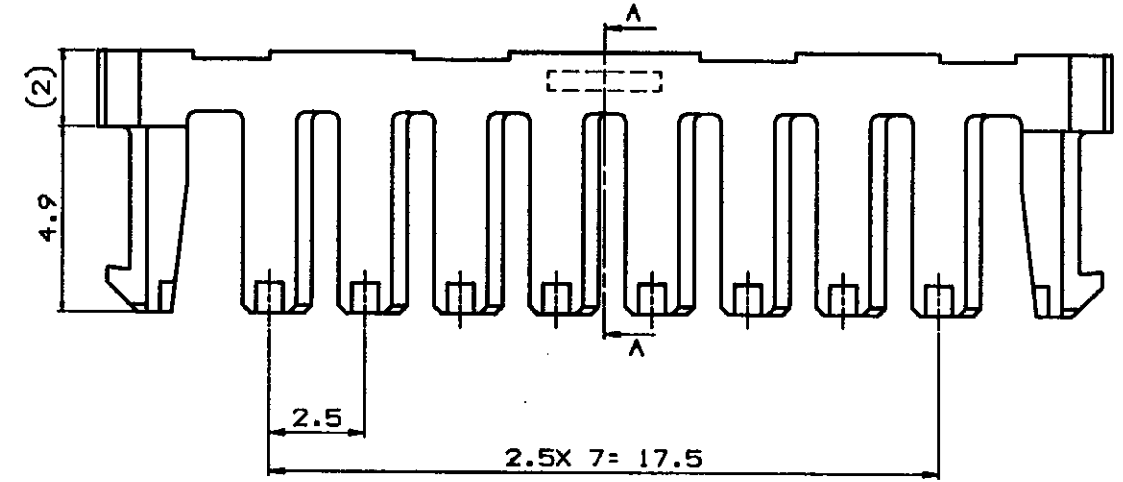
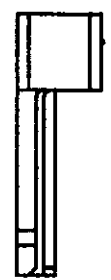
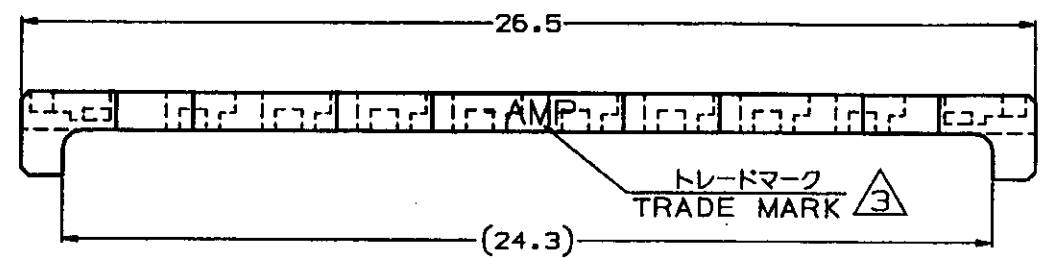


METRIC

単位：第 DIMENSIONS IN MM. DO NOT SCALE PRINT

PRINT DIST

AMP-J010-20
REV. 3/93



SECT A-A



- 注記：
 1. 適用製品規格：108-5459
 2. 適用製品型番：表1参照
 表2参照

- NOTES：
 1. PRODUCT SPEC.: 108-5459
 2. APPLICABLE CONN. P/N; SEE TABLE 1
 表2参照

キャップハウジング CAP HOUSING	10	316094
プラグハウジング PLUG HOUSING	10	917694
適用製品 APPLICABLE PRODUCT	番 数 (Pos.)	型 番 (P/N)

表1
TABLE 1

自然色 (NATURAL)	10	917706-1
プレート色調 (PLATE COLOR)	番 数 (Pos.)	型 番 (P/N)

表2
TABLE 2

トレード マーク TRADE MARK	生産場所 MANUFACTURING PLACE
-AMP 又は - OR AMP	日本 JAPAN
+AMP 又は + OR AMP	中国 CHINA (PRC)

B	変更	5/22/95	N.N	12/28/95
A	変更	5/22/95	A.O.Y.K	5/28/95
O	作成	5/22/95	Y.N.M.S	24/28/95
LTR	変更 (REVISION RECORD)	DR	CHK	DATE

Copyright © 1995 日本イー・エム・ピー株式会社		Copyright © 1995 AMP (Japan), LTD. ALL RIGHTS RESERVED.		AMP 日本イー・エム・ピー株式会社 Tokyo, Japan	
組合電線新番 (WIRE RANGE)	被覆外径 (INSULATION DIA.)	名称 (NAME)			
--- mm ² (AWG -)	0.93-1.8 mmφ	2.5mm シグナルダブルロック 10極ダブルロックプレート, 2.5mm SIGNAL DBL-LOCK 10P DBL LOCK PLATE			
材料 (MATERIAL)	仕上 (FINISH)	一般公差 (GENERAL TOLERANCE)		LOC	番号 (No.)
0.75 70 (UL84V-0)	---	10MF : ±0.2	B	J	C-917706
0.6 NYLON 6/6 AMP FILLED (UL-157-5)	---	100KΩ 30MF : ±0.25	尺 (SCALE)		REV.
DR. Y. NOGUCHI	DE. Y. NOGUCHI	300KΩ 100MF : ±0.3	5-1		B
CHK. Y. KASHIWA	APP. Y. KASHIWA	角 度 : ±3°	SHEET		1 OF 1

(CUSTOMER DRAWING) 参考図面