



Chipsmall Limited consists of a professional team with an average of over 10 year of expertise in the distribution of electronic components. Based in Hongkong, we have already established firm and mutual-benefit business relationships with customers from,Europe,America and south Asia,supplying obsolete and hard-to-find components to meet their specific needs.

With the principle of "Quality Parts,Customers Priority,Honest Operation,and Considerate Service",our business mainly focus on the distribution of electronic components. Line cards we deal with include Microchip,ALPS,ROHM,Xilinx,Pulse,ON,Everlight and Freescale. Main products comprise IC,Modules,Potentiometer,IC Socket,Relay,Connector.Our parts cover such applications as commercial,industrial, and automotives areas.

We are looking forward to setting up business relationship with you and hope to provide you with the best service and solution. Let us make a better world for our industry!



Contact us

Tel: +86-755-8981 8866 Fax: +86-755-8427 6832

Email & Skype: info@chipsmall.com Web: www.chipsmall.com

Address: A1208, Overseas Decoration Building, #122 Zhenhua RD., Futian, Shenzhen, China



TEST PARAMETERS		CONDITIONS	MIN	NOM	MAX	UNITS
ELECTRICAL						
COIL RESISTANCE			135	150	165	Ω
NOMINAL VOLTAGE				5.0		V
MUST OPERATE					3.75	V
MUST RELEASE			0.4			V
SWITCHING VOLTAGE					200	V
SWITCHING CURRENT					0.5	A
CARRY CURRENT					1.5	A
CONTACT RATING	SWITCHING				10.0	W
LIFE EXPECTANCY	SIGNAL LOAD	1 VOLT 30 mAmps		10 ⁹		OPERATIONS
	MEDIUM LOAD	CONTACT FACTORY		N/A		
	HIGH LOAD	CONTACT FACTORY		N/A		
STATIC CONTACT RESISTANCE		0.5 V, 30 mA, 50 mSEC AFTER COIL ENERG.			0.150	Ω
DYNAMIC CONTACT RESISTANCE		0.50 V, 50 mA, 100 Hz, 1.5 mSEC			0.200	Ω
INSULATION RESISTANCE	ACROSS OPEN CONTACTS	AT 300 VDC	10 ¹²			Ω
	CONTACT TO COIL		10 ¹²			Ω
	COIL TO SHIELD		N/A			Ω
	CONTACT TO SHIELD		N/A			Ω
CAPACITANCE	CONTACT GAP		0.8			pF
	CONTACT TO COIL		0.1			
DIELECTRIC STRENGTH	CONTACT GAP	DC / PEAK AC	300			V
	CONTACT TO SHIELD		1500			
	CONTACT TO COIL		1500			
OPERATE TIME INCLUDING BOUNCE		AT NOMINAL VOLTAGE		0.4		mSEC
RELEASE TIME ZENER DIODE DAMPED		30 Hz SQUARE WAVE		0.1		

NOTES:

1 ALL PARAMETERS SPECIFIED PER EIA/MWM STANDARDS FOR DRY NEED RELAYS, NO IBS-421 & RS-436 UNLESS OTHERWISE NOTED, ALL PARAMETERS SPECIFIED @ 25C & 40% RH.

2 SURFACE MOUNT COMPONENT PROCESSING TEMPERATURE: 500°F / 260°C MAX FOR 1 MINUTE DWELL TIME. TEMPERATURE MEASURED ON LEADS WHERE LEAD EXITS MOLDED PACKAGE.

3 COPLANARITY WITHIN .005 ALL LEADS

4 SKEW WITHIN .005 ALL LEADS

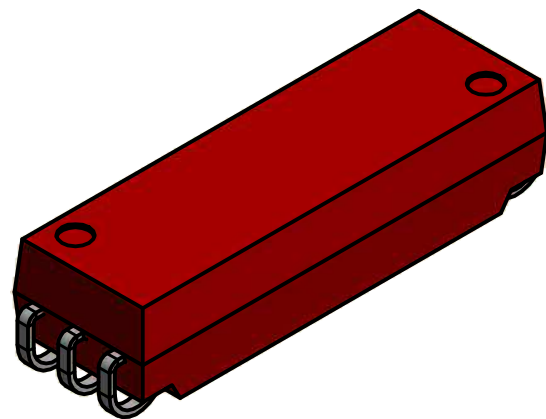
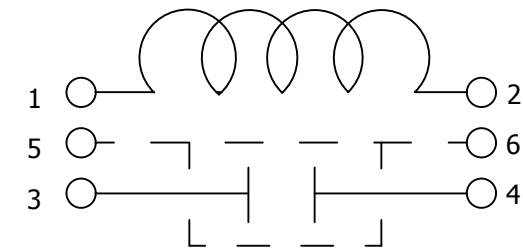
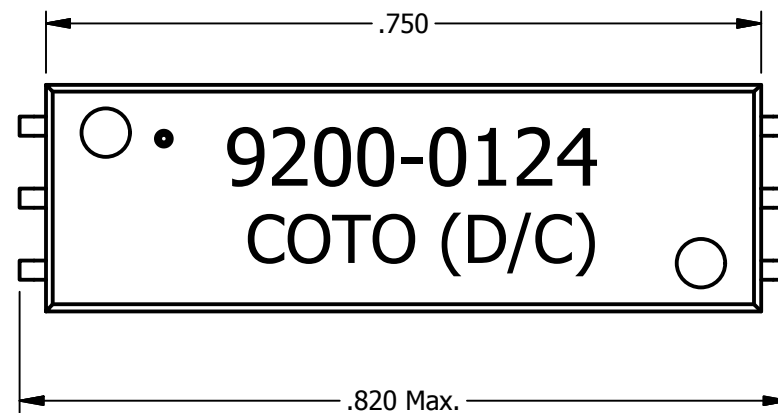
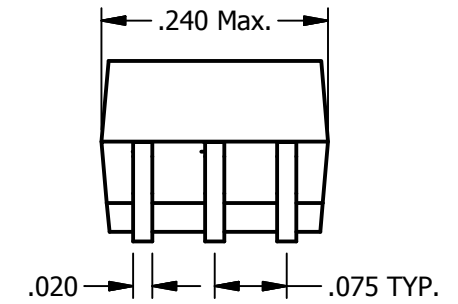
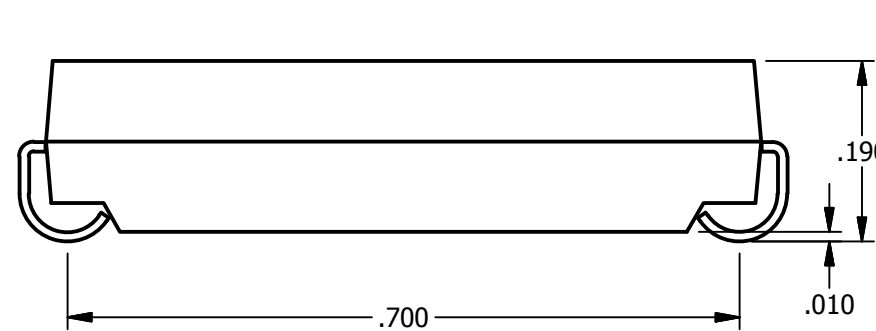
5 LEAD FRAME .010 ± .001 THICK

ENVIRONMENTAL RATINGS

STORAGE TEMPERATURE: -35C TO +100C

OPERATING TEMPERATURE: -20C TO +85C

REVISION HISTORY					
ZONE	REV	ECN	DESCRIPTION	DATE	REV BY
n/a	A	15-0012	NEW CUSATOM P/N DERIVATIVE	01/16/15	I.D.



APPROVALS REQUIRED		UNLESS OTHERWISE SPECIFIED ALL DIMENSIONS ARE IN INCHES XX = ± .010 XXX = ± .005 XXXX = ± .001 FRACTIONS = 1/64 ANGLES = ± 2°	66 WHITECAP DRIVE NORTH KINGSTOWN, RI 02886 USA PH:401.943.2686 www.COTORELAY.com	
DRAWN BY Ivan.Diaz	DATE 1/12/2015		<p>THIRD ANGLE PROJECTION</p> <p>DO NOT SCALE THIS DRAWING</p>	
CHECKED BY	DATE			
QA APPROVAL BY REF. LATEST ECO	DATE	COTO DWG NAME ANSI B TEMPLATE		
MFG APPROVAL BY REF. LATEST ECO	DATE	COTO DWG# 9200-0124		
ENG APPROVAL BY REF. LATEST ECO	DATE	CUST./SUP. NAME G. E.		CUST./SUP. DWG# 9200-0124
MATERIAL	FINISH	SIZE B		SCALE FOR SERIES 9202
			SHEETS 1 OF 1	