



Chipsmall Limited consists of a professional team with an average of over 10 year of expertise in the distribution of electronic components. Based in Hongkong, we have already established firm and mutual-benefit business relationships with customers from,Europe,America and south Asia,supplying obsolete and hard-to-find components to meet their specific needs.

With the principle of "Quality Parts,Customers Priority,Honest Operation,and Considerate Service",our business mainly focus on the distribution of electronic components. Line cards we deal with include Microchip,ALPS,ROHM,Xilinx,Pulse,ON,Everlight and Freescale. Main products comprise IC,Modules,Potentiometer,IC Socket,Relay,Connector.Our parts cover such applications as commercial,industrial, and automotives areas.

We are looking forward to setting up business relationship with you and hope to provide you with the best service and solution. Let us make a better world for our industry!



Contact us

Tel: +86-755-8981 8866 Fax: +86-755-8427 6832

Email & Skype: info@chipsmall.com Web: www.chipsmall.com

Address: A1208, Overseas Decoration Building, #122 Zhenhua RD., Futian, Shenzhen, China





GREENLEE®
COMMUNICATIONS

A Textron Company

HANDHELD MULTI-MODE ODR

920XC-20M

920XC-20M

MULTI-MODE ODR



MADE FOR THE TRADE!™

920XC-20M Handheld Multi-Mode OTDR

Cable Acceptance Testing and Fault Locating

Greenlee's 920XC-20M is a handheld, full-featured OTDR for cable acceptance testing and fault locating. The Autotest function automatically chooses the optimal measurement settings, scans the fiber under test and performs fiber analysis displaying length of fiber and the loss of each event in an easy-to-read table. Also available is the graphical user interface to navigate the trace signature for more detailed views of specific fiber events.

The 920XC-20M OTDR is indispensable and the ideal tool that all premise technicians and LAN/WAN contractors need in their toolbox. The 920XC-20M series handheld OTDR is designed for enhanced user convenience with its large color LCD display and graphical user interface. The user can activate the measurements function easily by the press of one button.

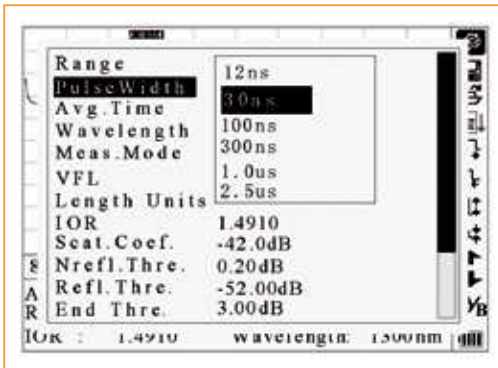
Features

- Economical
- Compact handheld design
- Easy to use
- Fast automated testing
- 22dB (1300nm), 18dB (850nm) dynamic range
- 50/125um and 62.5/125um fiber
- Large backlit LCD display
- Measure length and defects of coiled fiber
- Fiber analysis software for data management and report generation
- RS-232/USB interface
- NiMH batteries for 8 hours of continuous use



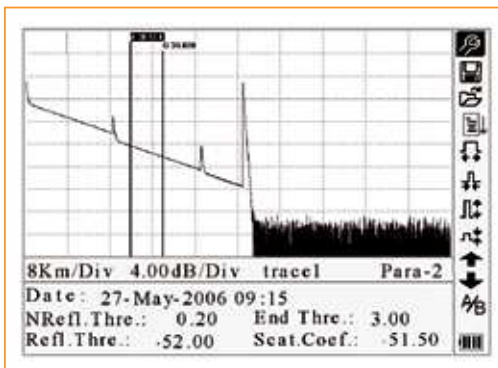
1. **Protective rubber boot**
2. **Menu Functions**
for settings and trace store/recall.
3. **Large color LCD display**
4. **Run/Stop button**
to automatically choose settings and run OTDR test.
5. **Sealed membrane panel**
6. **DC charger port**
7. **USB port**
for data transfer.
8. **OTDR port**
with dust cover.

OTDR Operation Modes



Instrument Setup

- Auto mode selects optimal distance range and pulsewidth
- All settings are selected through easy to use menu selections
- Color and high intensity monochrome settings for bright sunlight conditions
- Complete control of fiber analysis settings for auto measurement of splice and end of fiber



OTDR Trace

- View and measure test results
- One button measurement of all distance and loss information

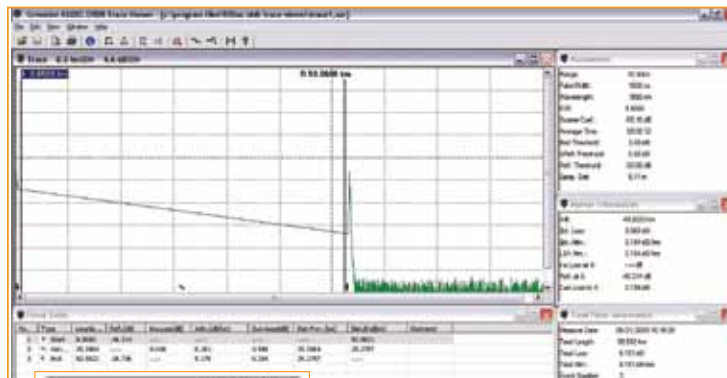
Event View Mode – user can page through each loss event for location in (meters/miles and feet) and loss in dB

Manual Measurement Mode – user can perform manual measurement with A and B cursor for distance, loss and reflectance measurements

Measurement Setup – user can view settings used to acquire measurement

Fiber Analysis Software – user can view settings used for auto measurement of events

OTDR Cable Acceptance Report Generation



OTDR Trace Viewer

- View and measure all trace files stored on the 920XC-20M
- Bellcore Standard OTDR Report (SOR) file storage format
- Display trace, fiber events and measurement information on single screen
- Display measurement settings used to acquire trace

Cable Acceptance Report

- Generate professional OTDR cable acceptance reports
- Cable acceptance report can be customized by user
- Trace signature and fiber events are printed on each report

Specifications

MODEL	920XC-20M	
Wavelength (± 20 nm)	850	1300
Dynamic Range (dB)	18	22
Event Deadzone (m)	7	
Attenuation Deadzone (m)	20	
Emitter Type	LED	
Pulsewidth	12/30/100/275/1us	30/100/275/1us/2us
Selectable Ranges (km)	0.1/0.3/0.5/1.3/2.5/5/10	0.1/0.3/0.5/1.3/2.5/5/10/20/40/80
Average Time	15s/30s/1 min/2 min/3 min	
Distance Measurement Accuracy	$\pm(1m + 5 \times 10^{-5} \times \text{distance} + \text{sampling space})$	
Connector Type	PC (interchangeable FC, SC, ST)	
FIBER ANALYSIS SOFTWARE		
Reflection Detect Accuracy	± 4 dB	
Attenuation Detect Accuracy	± 0.05 dB/dB	
Measurement Data Storage	1,000 test curves	
Data Transmission	RS-232/USB port	
GENERAL		
Power Supply	NiMH chargeable battery/AC adapter	
Battery Life	Support over 8 hours operating on one charge or over 20 hours standby	
Operating Temperature	-10° to 50° C	
Storage Temperature	-20° to 60° C	
Relative Humidity	0 to 95% (non-condensing)	
Weight	1.9 lbs. (0.87 kg)	
Dimensions	7.7" H x 3.9" W x 2.4" L (196mm x 100mm x 64mm)	

Ordering Information

R REPLACEMENT PART **A** = ACCESSORY

CAT NUMBER	UPC NUMBER	DESCRIPTION	QTY
Multi-Mode OTDR			
920XC-20M UPC FC	25688	Handheld OTDR, 850/1300nm, FC/UPC	1
920XC-20M UPC SC	25689	Handheld OTDR, 850/1300nm, SC/UPC	1
920XC-20M UPC ST	25690	Handheld OTDR, 850/1300nm, ST/UPC	1
Accessories			
AC-ADPT-20-UNI	25691	R Universal Power Supply	1
AC-CONN-FC-L2	20996	A FC Connector (For UPC & APC)	1
AC-CONN-SC-L2	20998	A SC Connector (For UPC & APC)	1
AC-CONN-ST-L2	20997	A ST Connector (For UPC Only)	1
1155-0526	10582	R Vehicle Adapter (6FT, 5.5 OD, 2.1M)	1
20988	20988	R Soft Carry Case	1
20989	20989	R USB Cable For OTDR	1
20990	20990	R RS-232 Cable	1
20999	20999	R NiMH Battery (9.6V)	1
25693	25693	A Serial Cable to USB	1
920XC-QR	25692	R 920XC Quick Reference Guide	1
946	60571	A Cleaning Wand (10/PK)	1
948	60692	A ReelCleaner™ Connector Cleaning System	1
Multi-Mode/Single Mode OTDR Kit			
920XC-SM-MM	26307	Single and Multi-Mode OTDR Kit	1

CONTENTS OF EACH MODEL NUMBER

Instrument including rechargeable battery, OTDR Trace Viewer software, installation disk, Data transfer cable, AC adapter, protective cover, carrying case, warranty card, CE/FCC certificate, certificate of calibration. Default language is English and Spanish. Alternate languages of Russian, Portuguese, and German available upon request.



www.greenlee.com • MA-5535 07/10
 4455 Boeing Drive • Rockford, IL 61109-2988 • USA • 815-397-7070
 ©2010 Greenlee Textron Inc. • Printed in USA
 Greenlee Textron Inc. is a subsidiary of Textron Inc.