



Chipsmall Limited consists of a professional team with an average of over 10 year of expertise in the distribution of electronic components. Based in Hongkong, we have already established firm and mutual-benefit business relationships with customers from,Europe,America and south Asia,supplying obsolete and hard-to-find components to meet their specific needs.

With the principle of “Quality Parts,Customers Priority,Honest Operation,and Considerate Service”,our business mainly focus on the distribution of electronic components. Line cards we deal with include Microchip,ALPS,ROHM,Xilinx,Pulse,ON,Everlight and Freescale. Main products comprise IC,Modules,Potentiometer,IC Socket,Relay,Connector.Our parts cover such applications as commercial,industrial, and automotives areas.

We are looking forward to setting up business relationship with you and hope to provide you with the best service and solution. Let us make a better world for our industry!



## Contact us

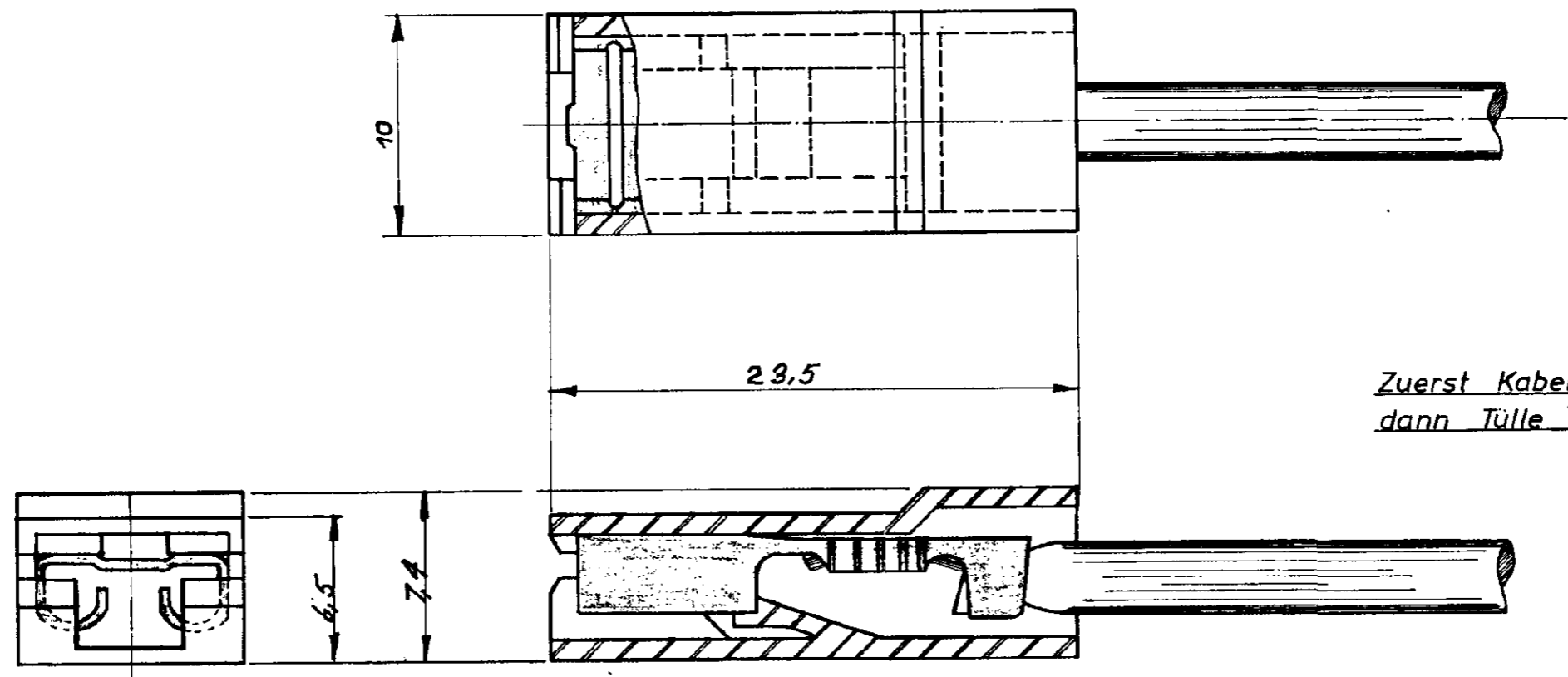
Tel: +86-755-8981 8866 Fax: +86-755-8427 6832

Email & Skype: info@chipsmall.com Web: www.chipsmall.com

Address: A1208, Overseas Decoration Building, #122 Zhenhua RD., Futian, Shenzhen, China



△ OBSOLETE	<del>925-068-3</del>	Thermopl. Polyester	natur	UL 94 V-0
OBSOLETE	<del>925-068-2</del>	Polyamid 6.6	schwarz	UL 94 V-2



Zuerst Kabelschuh anschlagen,  
dann Tülle aufstecken.

Zeichnung geschützt durch  
© Copyright 1967  
TEAMP DEUTSCHLAND GmbH  
Alle Rechte vorbehalten

△ OBSOLETE PARTS: OBSOLETE CIS STREAMLINING PER D.RENAUD/D.SINISI

△ OBSOLETE	<del>925-068-1</del>	Polypropylen (PPH)	natur	UL 94 V-2
	925-068-0	Polyamid 6.6	natur	
	Nummer	Werkstoff	Farbe	

**American Projection**

LTR	REVISION RECORD	DR	CHK	DATE
C2	ECR-10-026307	KK	HMR	11FEB11
C1	REVISED PER ECO-09-026444	KK	AEG	NOV09
C	-3 Thermopl. Polyester	KK		4-77
B	-1 Polypropylen added	KK		10/74
A	DIMENSION	KK		7-67

NUMBER	REQUIRED PER ASSEMBLY	DESCRIPTION

© 1967 BY TE INCORPORATED. ALL RIGHTS RESERVED.  
TE PRODUCTS COVERED BY PATENTS AND/OR PATENTS PENDING.

**CUSTOMER COPY REFERENCE ONLY**

DR 1-6-67 Kuhlmann

CHK

DE

MATERIAL AND FINISH

**TE** TE Connectivity

CLASS

WIRE - RANGE - INSULATION

TYPE

TOLERANCE EXCEPT AS NOTED ± .015 ± 1° 0'

SCALE 4:1

LOC A1

NO B

NO 925058

REV C2

NAME ISOLIERTÜLLE FÜR .250 SERIE FASTON

TOLERANZ ± 0,2 mm

DIMENSIONS IN INCHES. DO NOT SCALE PRINT.

PRINT DIST