



Chipsmall Limited consists of a professional team with an average of over 10 year of expertise in the distribution of electronic components. Based in Hongkong, we have already established firm and mutual-benefit business relationships with customers from,Europe,America and south Asia,supplying obsolete and hard-to-find components to meet their specific needs.

With the principle of “Quality Parts,Customers Priority,Honest Operation,and Considerate Service”,our business mainly focus on the distribution of electronic components. Line cards we deal with include Microchip,ALPS,ROHM,Xilinx,Pulse,ON,Everlight and Freescale. Main products comprise IC,Modules,Potentiometer,IC Socket,Relay,Connector.Our parts cover such applications as commercial,industrial, and automotives areas.

We are looking forward to setting up business relationship with you and hope to provide you with the best service and solution. Let us make a better world for our industry!



## Contact us

Tel: +86-755-8981 8866 Fax: +86-755-8427 6832

Email & Skype: info@chipsmall.com Web: www.chipsmall.com

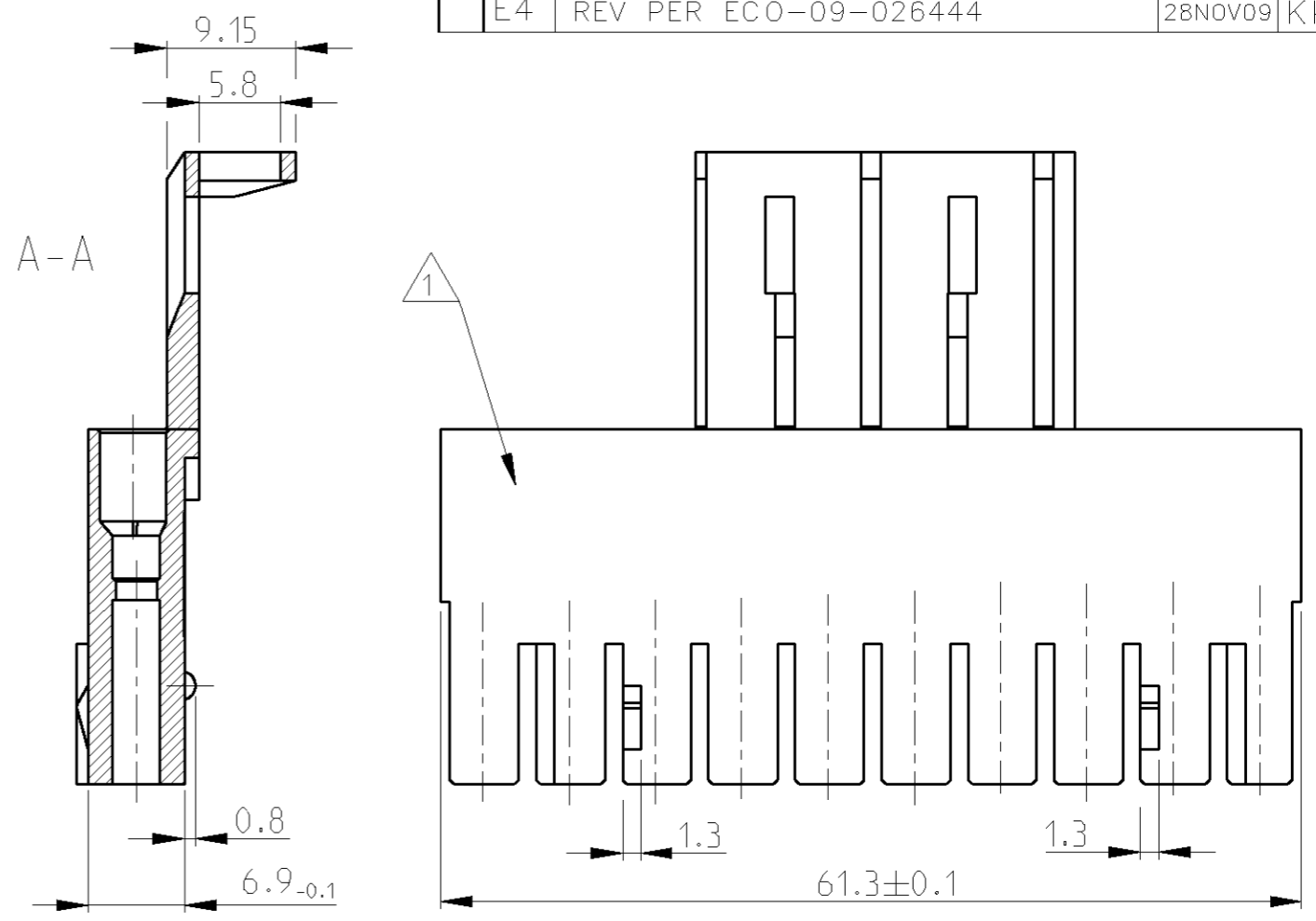
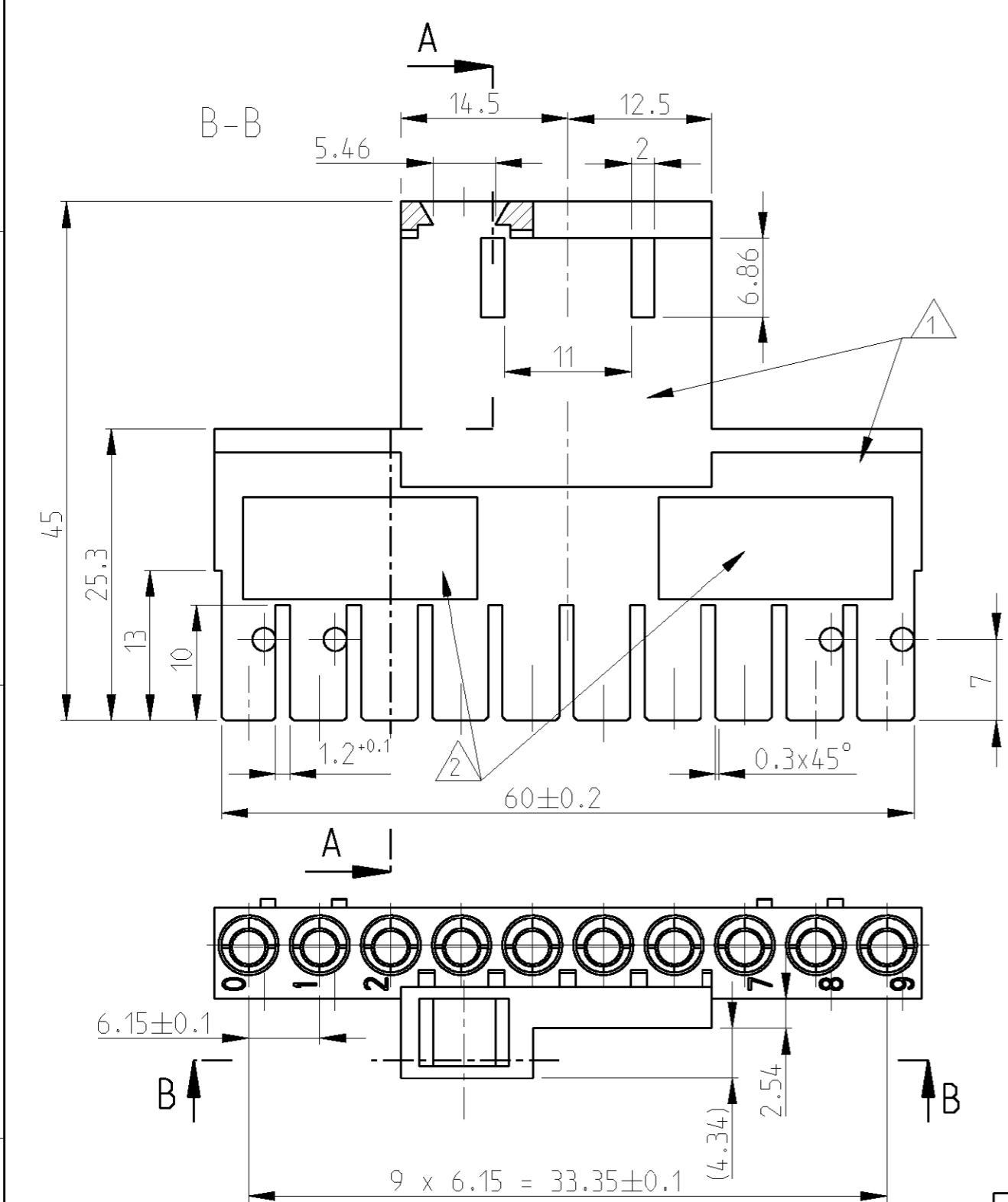
Address: A1208, Overseas Decoration Building, #122 Zhenhua RD., Futian, Shenzhen, China



THIS DRAWING IS UNPUBLISHED. VERTRAULICHE UNVERÖFFENTLICHTE ZEICHNUNG  
 RELEASED FOR PUBLICATION FREI FUER VERÖFFENTLICHUNG  
 - - 2000  
 MATED WITH: PASSEND ZU: 925312 / 926004  
 LOC: A I DIST: -  
 REVISIONS AENDERUNGEN

© COPYRIGHT 2000 BY TYCO ELECTRONICS CORPORATION. ALL RIGHTS RESERVED. ALLE RECHTE VORBEHALTEN  
 FILE NO.: Ablage-Nr.: 94-9608  
 WAS: 9177-73  
 PROJEKT NR.: PDM: E00-9621

P	LTR	DESCRIPTION BESCHREIBUNG	DATE	DWN	APVD
E1		STR.RELIEF, CONT. CHAMBERS, LABEL AREA NEW	07MAR2001	MSZ	GFEL
E2		SEE PCN EG00-2797-01	26SEP2001	MSZ	GFEL
E3		material description changed	07FEB2002	MSZ	GFEL
E4		REV PER ECO-09-026444	28NOV09	KK	AEG



- 1 Oberflaeche matt
- 2 Oberflaeche glaenzend
- 3 Gehaeuse verpackt in Karton 400x300x200mm
- 1 AREA SURFACE DIM
- 2 AREA SURFACE SPLENDID
- 3 HOUSING PACKED IN SHIPPING CARTON 400x300x200mm
- 4 OBSOLETE PARTS: OBSOLETE CIS STREAMLINING PER D.RENAUD/D.SINISI

4 OBSOLETE	GRAU RAL 7032 / GREY	SOCKET HOUSING	<del>925313-2</del>	2
	SCHWARZ / BLACK	SOCKET HOUSING	925313-1	1
	COLOR	DESCRIPTION	PARTNUMBER	ITEM

THIS DRAWING IS A CONTROLLED DOCUMENT FOR TYCO ELECTRONICS CORPORATION. IT IS SUBJECT TO CHANGE AND THE CONTROLLING ENGINEERING ORGANIZATION SHOULD BE CONTACTED FOR THE LATEST REVISION.  
 DIESES ZEICHNUNGS-DOKUMENT WIRD DURCH AMP INCORPORATED KONTROLLIERT. AENDERUNGEN, DIE DEM TECHNISCHEN FORTSCHRITT DIENEN, SIND VORBEHALTEN. DEN JEW EILS LETZTBUELTIGEN AENDERUNGSSTAND ERFAHREN SIE AUF ANFRAGE.

DIMENSIONS: MASSEINHEITEN: mm	TOLERANCES UNLESS OTHERWISE SPECIFIED: ALLGEMEINTOLERANZEN	DWN M.SZELAG 02FEB2001	tyco Electronics AMP GmbH D - 64625 Bensheim
	0 PLC ±0.4 1 PLC ± 2 PLC ± 3 PLC ± 4 PLC ± ANGLES/W INKEL ±1°	CHK W.BOECK 02FEB2001	
		APVD G.FELDMEIER 05FEB2001	
MATERIAL ZYTEL 79 G13	FINISH/OBERFLAECHE/FARBE	PRODUCT SPEC VERARBEITUNGSSPEZ. -	NAME SOCKET HOUSING; 10 POS. (M-SERIES) BUCHSENGEHAEUSE; 10 POL. (M-SERIE)
		APPLICATION SPEC VERARBEITUNGSSPEZ. -	SIZE A3 CAGE CODE 00779 DRAWING NO ZEICHNUNGS-NR. C=925313
		WEIGHT GEWICHT 11.2 g	RESTRICTED TO NUR FUER -
		CUSTOMER DRAWING /KUNDENZEICHNUNG	SCALE MASSSTAB 2:1 SHEET BLATT 1 OF VON 1 REV E4