



Chipsmall Limited consists of a professional team with an average of over 10 year of expertise in the distribution of electronic components. Based in Hongkong, we have already established firm and mutual-benefit business relationships with customers from,Europe,America and south Asia,supplying obsolete and hard-to-find components to meet their specific needs.

With the principle of “Quality Parts,Customers Priority,Honest Operation,and Considerate Service”,our business mainly focus on the distribution of electronic components. Line cards we deal with include Microchip,ALPS,ROHM,Xilinx,Pulse,ON,Everlight and Freescale. Main products comprise IC,Modules,Potentiometer,IC Socket,Relay,Connector.Our parts cover such applications as commercial,industrial, and automotives areas.

We are looking forward to setting up business relationship with you and hope to provide you with the best service and solution. Let us make a better world for our industry!



Contact us

Tel: +86-755-8981 8866 Fax: +86-755-8427 6832

Email & Skype: info@chipsmall.com Web: www.chipsmall.com

Address: A1208, Overseas Decoration Building, #122 Zhenhua RD., Futian, Shenzhen, China



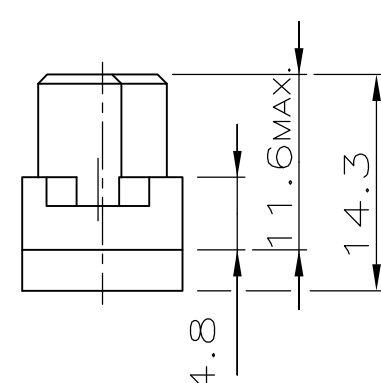
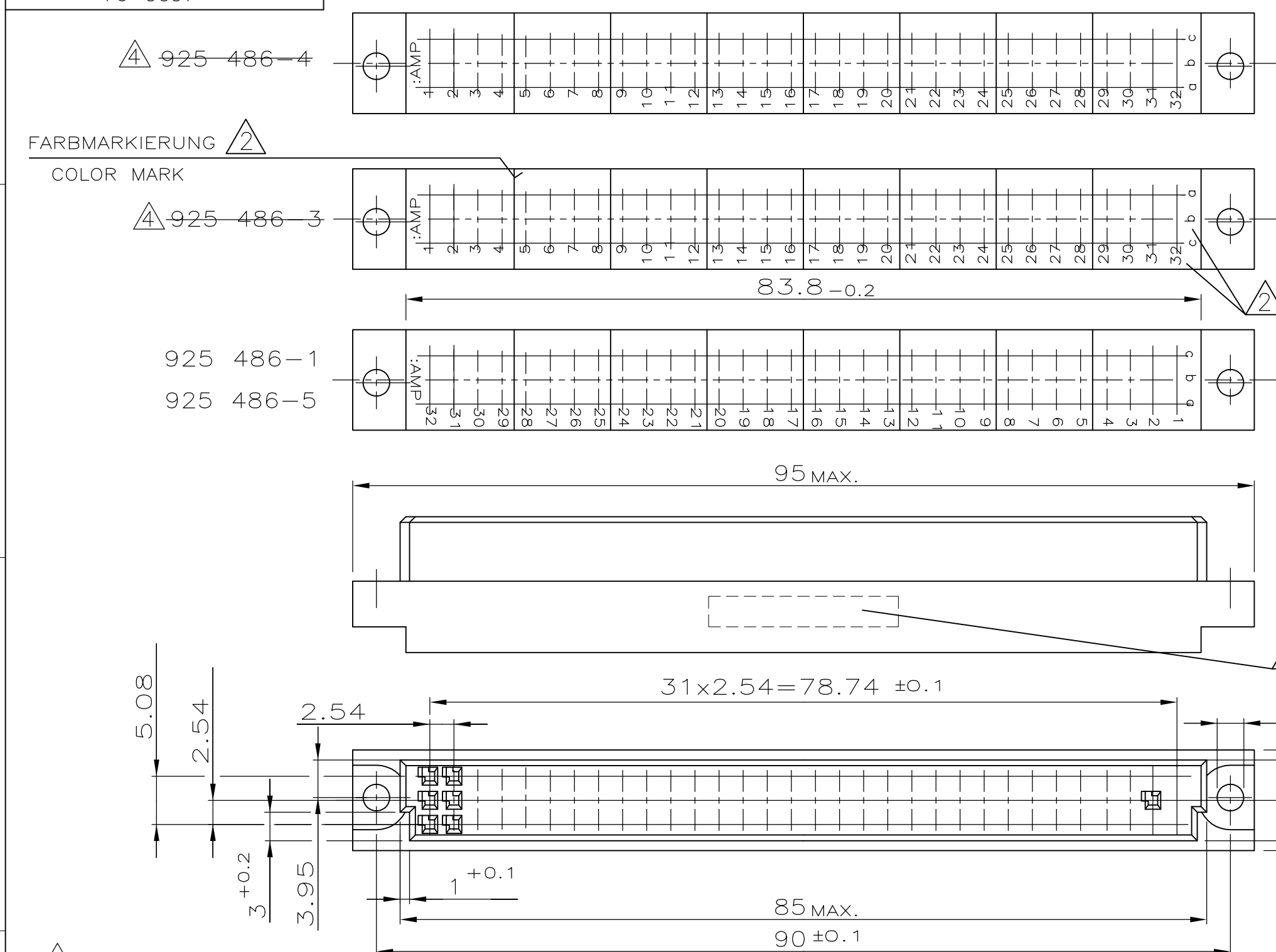
4

3

2

1

THIS DRAWING IS UNPUBLISHED. VERTRAULICHE UNVERÖFFENTLICHTE ZEICHNUNG		RELEASED FOR PUBLICATION FREI FUER VERÖFFENTLICHUNG		LOC - -		DIST - -		REVISIONS ÄNDERUNGEN		
© COPYRIGHT - - By - -		ALL RIGHTS RESERVED. ALLE RECHTE VORBEHALTEN						DESCRIPTION BESCHREIBUNG		
VERWENDET FÜR - -		ÄNDERUNGEN DIE DEM TECH- NISCHEN FORTSCHRITT DIENEN, BEHALTEN WIR UNS VOR		CAD-ORIGINAL ZEICHNUNG NICHT ÄNDERN				DATE		
WAR NR. 76-9097								21MAR11		
								DWN		
								APVD		
								M5		
								REVISED PER ECO-11-005150		
								RK		
								HMR		



- 1 AUFDRUCK: TEILE NR. UND DATUM
AUF VORDER ODER RÜCKSEITE
STAMP: PART-NO. AND DATE
ON FRONT OR BACKSIDE
- 2 AUFDRUCK: BUCHSTABEN UND ZAHLEN.
FARBMARKIERUNG ZWISCHEN
DEN KAMMERN 4/5; 8/9;
12/13; 16/17; 20/21;
24/25 UND 28/29
STAMP: LETTERS AND NUMBERS.
COLOR MARK BETWEEN CAVITIES
4/5; 8/9; 12/13; 16/17; 24/25
AND 28/29
- 3 925 486-2 OHNE JEGLICHE BEDRUCKUNG
925 486-2 WITHOUT ALL STAMP

4 OBSOLETE PARTS: OBSOLETE CIS
STREAMLINING PER D.RENAUD/D.SINISI

ZEICHNUNG GÜLTIG AB KW14./99

OBSOLETE	925 486-5	1	2	96 POL. MODU IV GEH.	PBT-30GV, UL94 V0	GRAU RAL 7035
	925 486-4	1	2	96 POL. MODU IV GEH.	PC 20GV	GRAU RAL 7032
	925 486-3	1	2	96 POL. MODU IV GEH.	PC 20GV	GRAU RAL 7032
	925 486-2	3		96 POL. MODU IV GEH.	PC 20GV	GRAU RAL 7032
	925 486-1	1	2	96 POL. MODU IV GEH.	PC 20GV	GRAU RAL 7032
	BESTELL-NR.	BEMERKUNG	BENENNUNG EINZELTEIL	WERKSTOFF	OBERFLÄCHE FARBE	

THIS DRAWING IS A CONTROLLED DOCUMENT. DIESE ZEICHNUNG IST EIN KONTROLLIERTES DOKUMENT.		DWN A.HO 14.12.1988	TE Connectivity		
DIMENSIONS: MASSE/HEITEN: mm		CHK -			
TOLERANCES UNLESS OTHERWISE SPECIFIED: ALLGEMEINTOLERANZEN		APVD -	NAME 96 POS. AMPMODU IV CRIMP-SNAP-IN HOUSING 96 POL. AMPMODU IV CRIMP-SNAP-IN GEHAEUSE		
0 PLC ± - 1 PLC ± 0.2 2 PLC ± - 3 PLC ± - 4 PLC ± - ANGLES / WINKEL ± -		PRODUCT SPEC PRODUKTSPEZ. -	SIZE A3		
MATERIAL -		APPLICATION SPEC. VERARBEITUNGSSPEZ. -	CAGE CODE 00779	DRAWING NO ZEICHNUNGS-NR. G-925486	RESTRICTED TO NUR FUER -
		WEIGHT GEWICHT -	CUSTOMER DRAWING/KUNDENZEICHNUNG		
		SCALE MASSTAB 2:1		SHEET BLATT 1	OF VON 1
				REV M5	