



Chipsmall Limited consists of a professional team with an average of over 10 year of expertise in the distribution of electronic components. Based in Hongkong, we have already established firm and mutual-benefit business relationships with customers from,Europe,America and south Asia,supplying obsolete and hard-to-find components to meet their specific needs.

With the principle of “Quality Parts,Customers Priority,Honest Operation,and Considerate Service”,our business mainly focus on the distribution of electronic components. Line cards we deal with include Microchip,ALPS,ROHM,Xilinx,Pulse,ON,Everlight and Freescale. Main products comprise IC,Modules,Potentiometer,IC Socket,Relay,Connector.Our parts cover such applications as commercial,industrial, and automotives areas.

We are looking forward to setting up business relationship with you and hope to provide you with the best service and solution. Let us make a better world for our industry!



Contact us

Tel: +86-755-8981 8866 Fax: +86-755-8427 6832

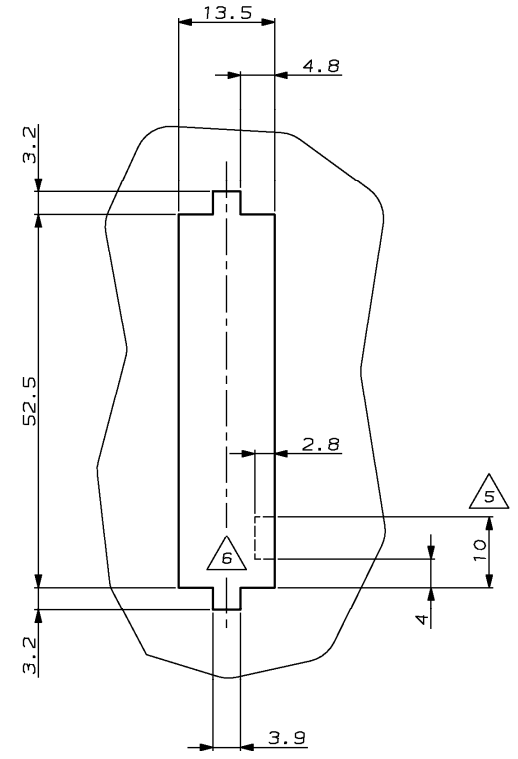
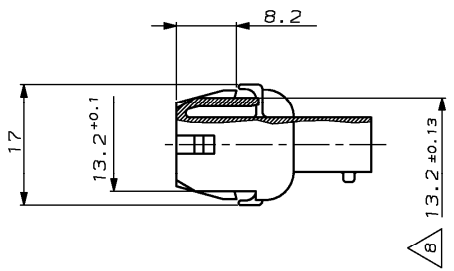
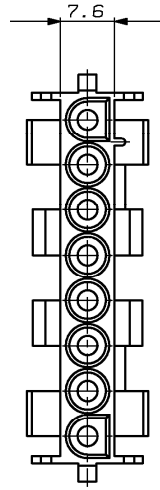
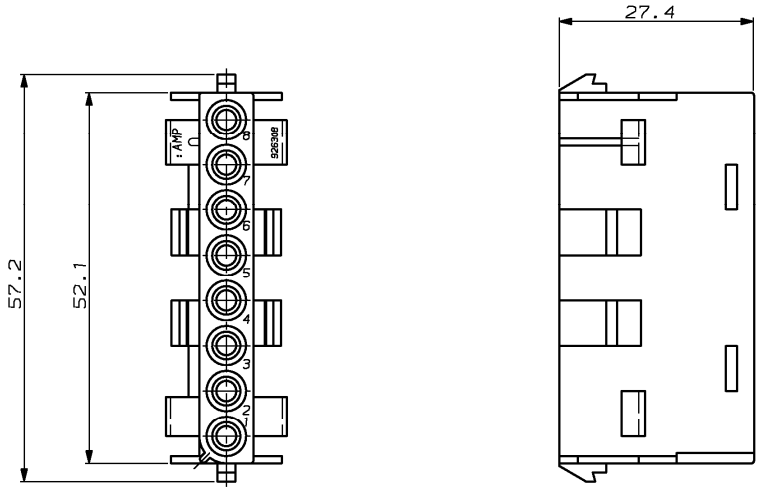
Email & Skype: info@chipsmall.com Web: www.chipsmall.com

Address: A1208, Overseas Decoration Building, #122 Zhenhua RD., Futian, Shenzhen, China



THIS DRAWING IS UNPUBLISHED.
 VERBODEN DE AANGEGEVENDE TEKENING
 TOEGANGIG MAKEN. BEI VERBODEN TOEGANGIG
 MAKEN, WORDEN ALLE RECHTEN VOORBEHALTEN.

LOC	DISY	REVISIONS				
P	LTR	ANDERANSEN	DESCRIPTION	DATE	D/W	APVD
PROJEKT NR.:		BESCHREIBUNG				
G3		REVISED PER ECO-11-005139		22MAR11	RK	HMR
G4		ECO-12-013413		23JULY2012	MGT	R.P.
G5		ECR-12-013677		27NOV2012	MGT	R.P.



Montageausschnitt (Bestückungsseite) 3
 PANEL CUTOUT (COMPONENT SIDE)

REMARKS
 Bemerkungen

- 1 Geeignet für UMNL Stift- und Buchsenkontakte
 BEEN SUITABLE FOR UMNL PIN- AND SOCKET CONTACTS
- 2 Passend zu UMNL-Steckergehäuse 926301, 640582, 640586
 SUITABLE TO UMNL-PLUG HOUSING 926301, 640582, 640586
- 3 Empfohlene Blechstärke 0.75-2.3 mm
 RECOMMEND SHEET METAL THICKNESS 0.75-2.3 mm
- 4 Gehäuse muß in Stanzrichtung eingeführt werden
 HOUSING MUST BE INTRODUCED TO PUNCHING DIRECTION
- 5 Für Verschlüsseltes Einsetzen der Gehäuse
 FOR CODED USING OF THE HOUSINGS
- 6 Position von Kammer 1 bei verschlüsseltem Einsetzen der Gehäuse
 POSITION OF CAVITY 1 FOR CODED USING
- 7 Neues Material (Phosphor und Halogen frei)
 NEW MATERIAL (PHOSPHOR AND HALOGENEOUS FREE)
- 8 Toleranz ist einzuhalten bei Montage im Durchführungs-Ausschnitt
 TOLERANCE TO KEEP WHEN ASSEMBLING IN THE PANEL CUTOUT
- 9 Schüttgut in Beutel und Versandkarton PN 973 057-2
 BULK PACKAGING IN PLASTIC BAG AND CORRUGATED SHIPPING BOX PN 973 057-2
- 10 GWT 750° (WITHOUT FLAME) ACC. IEC 60335-1 EDITION 06/2001
 GLÜHDRAHTPRÜFUNG 750° (OHNE FLAMME) NACH IEC 60335-1 AUSGABE 06/2001

REMARK	PART NO	MATERIAL	COLOUR
	926308-5 10	PA 6 UL 94 V-0	Natur
OBsolete	926308-4	PA6.6 UL94 V-0	Weiss
	926308-3	PA6.6 UL94 V-0	WHITE 7
	926308-2	PA6.6 UL94 V-0	Schwarz
	926308-1	PA6.6 UL94 V-2	Natur

DIMENSIONS, DIMENSIONS: ± 0.2 TOLERANCES UNLESS OTHERWISE SPECIFIED, ALL GENERAL TOLERANCES FINISH/OBERFLÄCHE/FARBE: siehe Tabelle		D/W: Tudmann 20.05.81 C/SK: Egenolf 01.06.81 APVD: Bleicher, M. 05-JUL-04 NAME PRODUKT SPEZ: 108-1031 ANWENDUNG SPEZ: 114-18011 VERBODEN TOEGANGIG MAKEN: 114-18011 MATERIAL: siehe Tabelle MEHRGEWICHT: 8.3 g CUSTOMER DRAWING / KUNDENZEICHUNG	STE TE Connectivity UMNL 8-pol. Aufnahmegehäuse UMNL 8-WAY CAP SIZE: A2 00779 CASE CODE: 926308 DRAWING NO: 926308 ZEICHNUNGS-NR.: 926308 RESTRICTED TO: MUR FLUR REV: G5
--	--	--	--