



Chipsmall Limited consists of a professional team with an average of over 10 year of expertise in the distribution of electronic components. Based in Hongkong, we have already established firm and mutual-benefit business relationships with customers from,Europe,America and south Asia,supplying obsolete and hard-to-find components to meet their specific needs.

With the principle of “Quality Parts,Customers Priority,Honest Operation,and Considerate Service”,our business mainly focus on the distribution of electronic components. Line cards we deal with include Microchip,ALPS,ROHM,Xilinx,Pulse,ON,Everlight and Freescale. Main products comprise IC,Modules,Potentiometer,IC Socket,Relay,Connector.Our parts cover such applications as commercial,industrial, and automotives areas.

We are looking forward to setting up business relationship with you and hope to provide you with the best service and solution. Let us make a better world for our industry!



## Contact us

Tel: +86-755-8981 8866 Fax: +86-755-8427 6832

Email & Skype: info@chipsmall.com Web: www.chipsmall.com

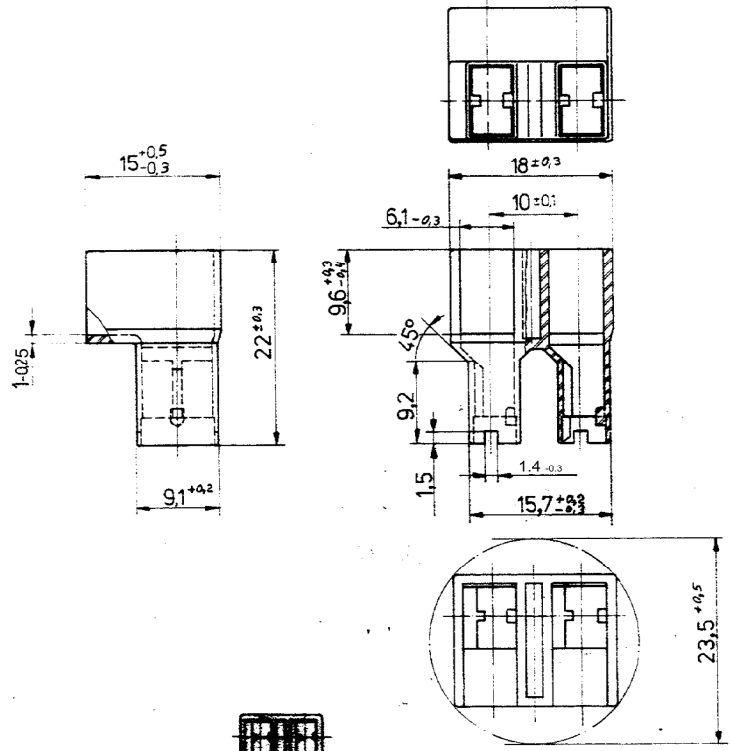
Address: A1208, Overseas Decoration Building, #122 Zhenhua RD., Futian, Shenzhen, China



war  
was  
79-9220

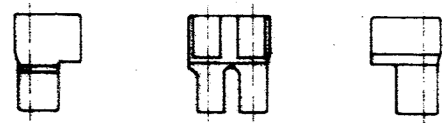
Zeichnung geschützt durch  
© Copyright 1979  
TE DEUTSCHLAND GmbH  
Alle Rechte vorbehalten

Index	Änderung	Tag	Name
A	DRAFTING ERROR	05SEP11	PKS/RRP



- 1 Nicht vermaßte Radien  $0,3^{+0,2}$   
all radii  $0,3^{+0,2}$  except as noted
- 2 Nicht vermaßte Wanddicken  $1,1_{-0,4}$   
wall thickness  $1,1_{-0,4}$  except as noted

Maßstab  
scale  
1:1



Alle Rechte vorbehalten. Die dem Hersteller vorbehaltenen Rechte vorbehalten.

			<b>TE</b> TE Connectivity		
			Benennung		<b>K</b>
			2 pol. POSITIVE LOCK Gehäuse der Serie 6,3; 90° abgewinkelt		
926319-1	PA.6.6	schwarz	Nicht tolerierte Maße	Format	Zeichnungs-Nr.
Bestell-Nr.	Werkstoff	Oberfläche Farbe	± 0,2 mm ± 1,5 °	<b>B</b>	<b>926319</b>
Gez. 20.11.79	Gepr. 20.11.79	Gepr.	Maßstab 2:1 (1:1)	Blatt-Nr. 1 von 1	